



मध्याह्न भोजन योजना
Mid Day Meal Scheme

National Programme
of
Mid Day Meal in Schools
(MDMS)
Annual Work Plan & Budget
2015-16

Name of the State: BIHAR

Mid Day Meal Programme
Annual Work Plan and Budget 2015-16

1. Introduction:

1.1 Brief History

National Programme of Nutritional Support to Primary Education (NP-NSPE) was launched as a centrally sponsored scheme on 15th August 1995.

1995-2002	3kg rice to each children per month
2003-04	As Pilot project in 2532 schools of 30 blocks of 10 different district cooked meal started
2005	Mid day meal started in its present form for Class I-V.
2007-08	Mid-day Meal extended to class VI-VIII.
2008	On 21 st May Bihar Rajya Madhyan Bhojan Yojana Samiti was registered and came into existence.

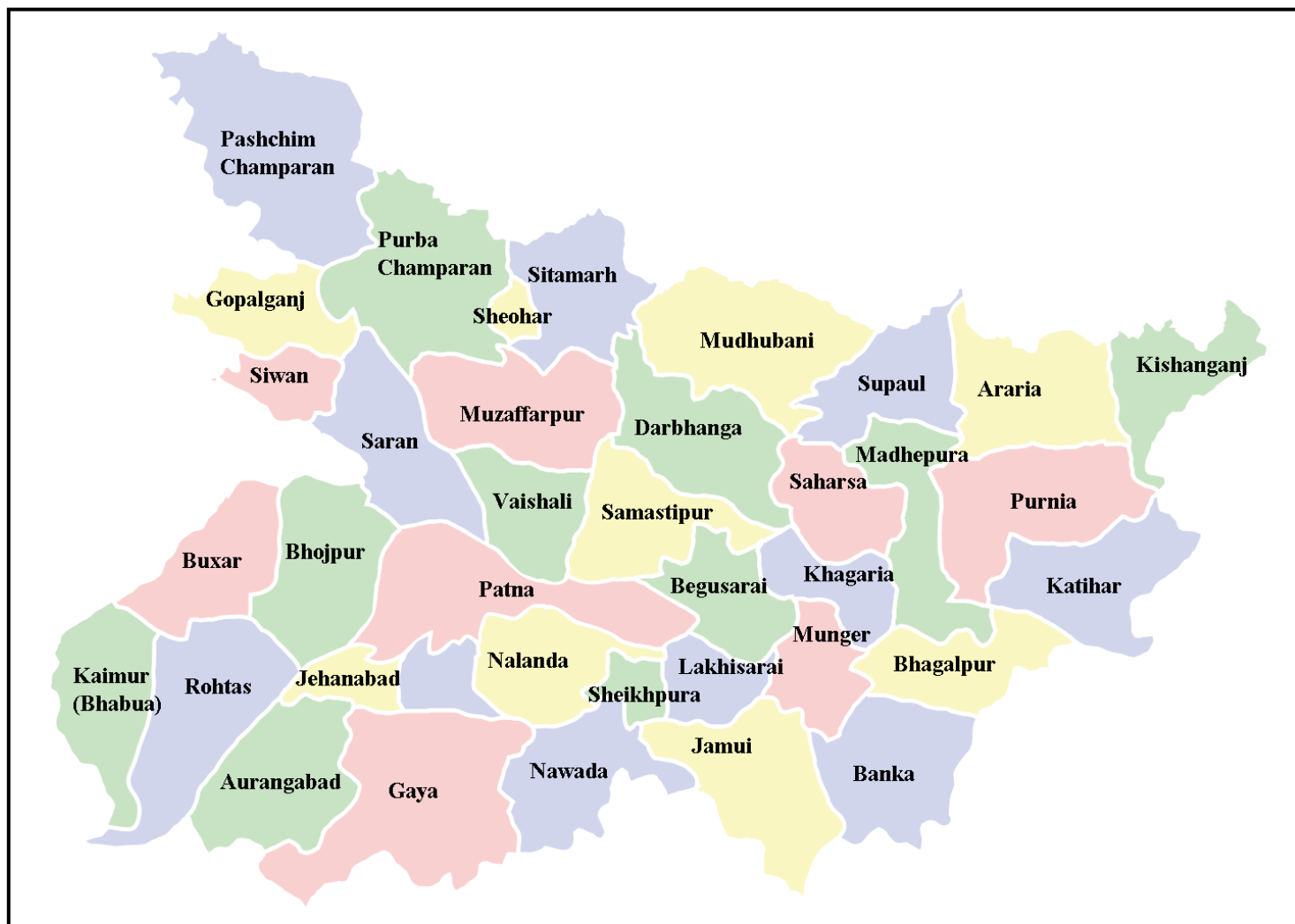
Objective of Mid-day Meal

- To provide hot cooked mid day meal to each and every child attending government/government aided schools, NCLP schools EGS and AIE centres including Madaras and Maktabas.
- To enhance enrollment, retention and attendance and to improve nutritional level among children.
- To protect children from classroom hunger.
- To motivate children belonging to disadvantaged sections to attend school on more regular basis and help them to concentrate on school and classroom activities.
- To address the problem of malnutrition.
- To enhance social empowerment through the provision of employment of women as cook cum helpers.
- To promote socialization among children belonging to all castes and class.

Our Goal

Each School-Each Working days-Each child Providing Healthy & Nutritious Mid-day Meal.

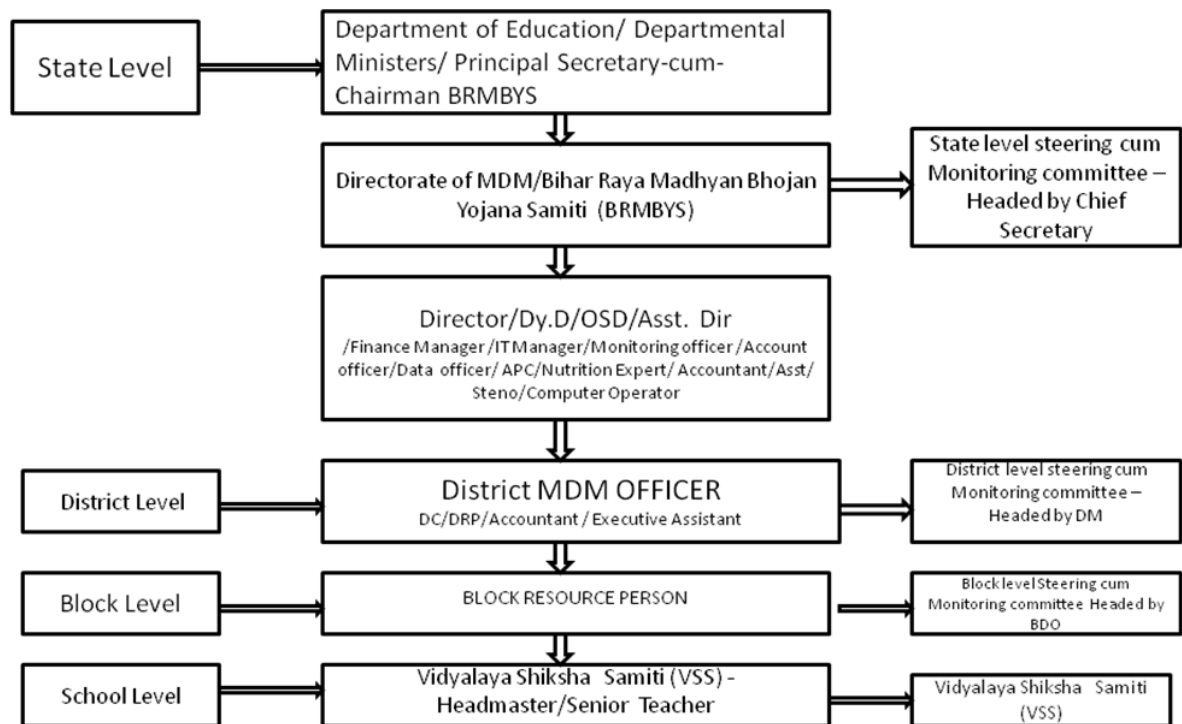
Demographic Profile of the State:



Physical Features	
Latitude	24° 20' 10" - 27° 31' 15" N
Longitude	83° 19' 50" - 88° 17' 40" E
Rural Area	92,257.51 sq. km
Urban Area	1,095.49 sq. km
Total Area	94,163.00 sq. km
Height above Sea-Level	173 Feet(52.73 Meter)
Normal Rainfall	1,105 mm
Avg. Number of Rainy Days	50 Days in a Year

Bihar is located in the eastern part of the country (between 83° 30' to 88° 00' longitude). It is an entirely land-locked state, although the outlet to the sea through the port of Kolkata is not far away. Bihar lies mid-way between the humid West Bengal in the east and the sub humid Uttar Pradesh in the west, which provides it with a transitional position in respect of climate, economy and culture. It is bounded by Nepal in the north and by Jharkhand in the south. The Bihar plain is divided into two unequal halves by the river Ganga which flows through the middle from west to east.

1.2 Management Structure



1.3 Process of Plan Formulation.

- Schools compile data and send it to the Block.
- Blocks send data to Districts
- Districts evaluate and examine the data and prepare the AWP & Budget of the district
- Districts then send AWP to the State.
- State office analyses, evaluates and examines the data of the AWP provided by the districts and finalizes it and then AWP is approved by the State Steering cum monitoring committee.
- Finally it is produced before the PAB of the Govt. of India for the approval.
- A workshop was organised in January 2015 to train the persons responsible for preparing AWP & Budget at district level. After that District Programme Officer, MDM were called to the headquarter along with final AWP & Budget for 2015-16. All the information have been analytically processed and AWP & Budget finalized as per the instructions of GOI and it was proved by SSMC on 04.03.2015.

2. Description and assessment of the programme implemented in the current year (2014-15) and proposal for next year (2015-16)with reference to:

2.1 Regularity and whole someness of mid – day meals served to children; reasons for programme interruptions, if any and planning to minimize them.

Total Enrolment	PAB Approval	Total Beneficiaries	% against Enrolment	% against PAB
20284501	13424734	13148111	65	98

Reasons for programme interruptions:-

- Local problems
- Schedule Lok Sabha Election in 2014
- Disruption in supply of foodgrain to schools due to demand of higher transportation cost by SFC
- Flood
- Too cold or too hot weather
- Cook cum helpers regular demand for increase in their honorarium

Steps taken to minimize the interruption:-

- The monthly state level meeting of DPOs ,MDM, officers of the SFC, FCI and related banks.
- In state level Steering cum monitoring committee meeting lifting of grains issues is discuss with MD, SFC.
- Monthly state level meeting is held with representative of FCI and SFC.
- Tracking of CUG mobile connection of block resource persons is introduced to ensure their mobility in the block during school inspection
- Supervision by of District Magistrate.
- One of the items of review in the monthly video conference by the chief secretary.

2.2 Details about weekly Menu.

2.2.1 Weekly Menu – Day wise

Monday	Rice, Mixed Dal and Green Vegetables
Tuesday	Zira Rice + Aloo Soyabean Sabji
Wednesday	Khichri with Green Vegetables and Chokha
Thursday	Rice, Mixed Dal and Green Vegetables
Friday	Pulao + Kabuli chana / Lal Chana Chhola + Green Salad
Saturday	Khichri with Green Vegetables and Chokha

- 2.2.2 Additional Food items provided (fruits/milk/any other items), if any.
- No
- 2.2.3 Usage of Double Fortified Salt,
- Direction has been issued to use Double Fortified Salt in MDM vide letter no. 988 dated 12.06.2014 & letter no. 644 dated 31.05.2012.
- 2.2.4 At what level menu is being decided / fixed,
- State level
- 2.2.5 Provision of local variation in the menu
- locally available green vegetable are used
- 2.2.6 Timings for serving of Mid day meal at school level.
- In summer between 09:00 a.m to 10:00 a.m
 - In winter between 01:00 p.m to 02:00 p.m

2.3 Foodgrains Management

2.3.1 Time frame for lifting, District wise lifting calendar of foodgrains.

- Calendar for lifting of foodgrains has been decided by the state office vide letter no. 2244 dated 11.09.2013 which is as under:-

By 18 th of every month	Block wise sub allotment of foodgrains.
By 22 nd of every month	Issue of SIO
By 22 nd to 30 th of every month	Lifting & distribution of foodgrains

2.3.2 System for ensuring lifting of FAQ foodgrains (Joint inspections at the time of lifting etc.)

- Yes. A direction has been given vide letter no. 134 dated 24.01.2012 & 5977 dated 21.11.2011 at each level to lift only FAQ foodgrains.

2.3.3 Transportation and distribution

- State food corporation lifts grain from FCI and Block level transporter lifts grain from SFC (vide letter no. 2244 dated 11.09.2013) and distribute among the schools as per self generated advice cum sub allotment letter generated from MIS.

By 10 th to 15 th of every month	School wise and block wise advice is generated from MIS
By 18 th of every month	Block wise sub allotment of foodgrains
By 22 nd of every month	Issue of SIO
By 22 nd to 30 th of every month	Lifting & distribution of foodgrains

2.3.4 Whether unspent balance of foodgrains with the schools is adjusted from the allocation of the respective schools.

- Yes. Advice is auto generated through MIS considering the balance foodgrains and the consumption at the school level.

2.3.5 Number of schools receiving foodgrains at doorstep of school.

- All Schools

2.3.6 Storage facility at different levels,

- At FCI godown
- Block level SFC godown
- Storage Bin has been provided to all school for the storage of foodgrains vide letter no. 2143 dated 22.08.2013.

2.3.7 Challenges faced and plan to overcome them.

- Disruption in supply of foodgrain to schools due to demand of higher transportation cost.
- Scarcity of foodgrains at FCI occasionally.
- To over come the above challenges regular meeting s of different concerned officer are held at district and state level.

2.4 Payment of cost of foodgrains to FCI.

2.4.1 System for payment of cost of foodgrains to FCI,

- Through district level office

2.4.2 Status of pending bills of FCI of the previous year.

(In Rupees)

2010-11	2011-12	2012-13	2013-14	2014-15
1828672	2098710	4190617	478317	300320694

2.4.3 Status of monthly meetings by the State Nodal Officer with the FCI.

- Yes, Every month meeting is held.

2.4.4 The process of reconciliation of payment with the concerned offices of FCI.

- Monthly state level meeting is held with representative of FCI and SFC

2.4.5 Relevant issues regarding payment to FCI.

- Bill wise details not submitted by FCI to the state office.
- Reconciliation of bill raised by FCI and payment made by district official.

2.5 Fund Flow Mechanism - System for release of funds (Central and State).

2.5.1 Mode of release of funds at different levels, (e-transfer of funds directly from State to School/implementing agency)

- E-transfer. Fund is sub allotted to district level office from there school receives fund through RTGS mode on basis of auto generated schoolwise advice from MIS.

2.5.2 Dates when the fund released to State Authority/Directorate/District/Block /Gram Panchayat and finally to the Cooking Agency/School.

Installment	Date of receiving	Fund released to district	Fund released to School
Adhoc Grant (25%)	23.04.2014	09.06.2014	17.6.2014
Balance of 1st Installment	30.09.2014	29.11.2014	5.12.2014
2nd Installment	26.11.2014	24.12.2014	27.12.2014

2.5.3 Reasons for delay in release of funds at different levels.

- None

2.6 Cook-cum-helpers

2.6.1 System and mode of payment of honorarium, of honorarium to cook-cum-helpers and implementing agencies viz. NGOs/SHGs/Trust/Centralized kitchens etc.

- Through E-transfer

2.6.2 Rate of honorarium to cook-cum-helpers,

- Rs. 1000/-

2.6.3 Number of cook-cum-helpers having bank accounts.

- 2,07325 (As per MIS)

2.6.4 Payment of honorarium to cook-cum-helpers through their bank accounts

- Yes, Direction has been given vide letter no. 5964 dated 17.11.2011.

2.6.5 Provisions for health check-ups of Cook-cum-Helpers

- Direction has been given to the District officials for regular health checkup of cook cum helpers at the local Primary Health Centre vide letter no 1918 dated 31.12.2014.

2.6.6 Whether cook-cum-helpers are wearing head gears and gloves at the time of cooking of meals.

- Yes, Apron and caps have been provided vide letter no. 134 dated 24.01.2012 & 337 dated 21.02.2014

2.6.7 Modalities for apportionment of cook-cum-helpers engaged at school level and working at centralized kitchens, in case of schools being served through centralized kitchens,

- In case of even number of cook cum helper half of the cooks is allotted to school and rest half to the centralized kitchen.
- In case of odd number of cook cum helper half plus one of the cooks is allotted to school and rest half to the centralized kitchen.
- Direction has been given for the distribution of cooks between VSS and NGO/Trust vide letter no 1062 dated 06-06-2013.

2.7 Procurement and storage of cooking ingredients and condiments

2.7.1 System for procuring (good quality Agmark / FPO) pulses, vegetables including leafy ones, salt ,condiments ,etc. and other commodities

- Yes, direction has been given vide letter no. 386 dated 26.03.2012 & letter no. 1933 dated 21.07.2013. These are procured by the SMC locally

2.7.2 Whether FIFO method has been adopted in usage of pulses and condiments etc. or not.

- Yes, Direction has been issued vide letter no. 1209 dated 30.07.2014

2.7.3 Arrangements for safe storage of ingredients and condiments in kitchens.

- Yes, Steel trunk has been provided to every school for the storage of items vide letter no. 134 dated 24.01.2012. These are available in schools

2.8 System for cooking, serving and supervising mid-day meals in the school and measures to prevent any untoward happening.

Cooks cum helpers has been trained as under :-

- For self cleanness and safety
- For cleanliness for kitchen
- Storage of cooking material
- For taking precaution while cooking
- Precaution taken while serving meal to children
- Precaution taken after serving meal to children
- Precaution taken if food is contaminated
- Steps to be taken if somebody take contaminated food

Supervision

- Meal to be prepared under the supervision of VSS
- After meal is prepared cook/member of VSS has to taste
- After half an hour of tasting meal if safe than only can be served to the children

Above direction has been given vide letter no. 1209 dated 30.07.2014

2.9 Kitchen-cum-stores.

2.9.1 Procedure and status of construction of kitchen-cum-store.

- Kitchen shed being constructed on plinth area norms and enrolment

Total kitchen shed sanctioned (2006-7 to 2013-14)	Completed	Under construction	Sanction but not constructed
66550	47253	8238	9898

2.9.2 The reasons for slow pace construction of kitchen cum stores, if applicable

- Land dispute
- Local problems like dispute between VSS member
- Transfer of Headmasters
- Administrative action taken against Headmasters like suspension
- Retirement of Headmasters

2.9.3 Whether any standardized model of kitchen cum stores is used for construction.

- Yes, four model design have been approved.

2.9.4 Details of the construction agency and role of community in this work.

- Departmental, under the supervision of VSS. Detail direction has been given vide letter no. 2080 dated 12.08.2013.

2.9.5 Kitchen cum stores constructed through convergence, if any

- NIL

2.9.6 Progress of construction of kitchen-cum-stores during this year and target for the next year.

- Under construction-8238
- Target for next year-5000

2.10 Kitchen Devices

2.10.1 Procedure of procurement of kitchen devices from funds released under the Mid Day Meal Programme.

- Kitchen device is purchased at the school level under the supervision of VSS

2.10.2 Procedure of procurement of kitchen devices from funds released under the other sources.

- Fund has been provided for the purchased of kitchen and utensils from IAP/MADP/MSDP in some districts

2.10.3 Availability of eating plates. Source of funding of eating plates

- Steel plates has been provided to all the upper primary schools of the state through state fund vide letter no. 1931 dated 27.07.2013.

2.11 Capacity building and training for different stakeholders

2.11.1 Details of the training programme conducted for cook-cum-helpers ,State level officials , SMC members, school teachers and others stake holders

- Every year comprehensive training programme is organized for cook cum helper at the district level. Latest training is in progress in different Blocks since Jan 2015
- Selected cooks cum helper from each district of Bihar has been trained at Hotel management institute, Vaishali, Bihar.
- Five days training programme has been organized by National productivity council, Jaipur for State level officers and District Incharge of MDM.

2.11.2 Details about Modules used for training, Master Trainers, Venues etc.

- Through animation film
- Video film
- Through master trainer

2.11.3 Targets for the next year.

- All the cook cum helpers of the state is to be trained again in 2015-16.

2.12 Management Information System at School ,Block ,District and State level and its details.

2.12.1 Procedure followed for data entry into MDM-MIS Web portal

- Parallel MIS is running successfully since may 2011 in the state .Data to the web portal to GOI is pushed in offline mode.

2.12.2 Level (State/ District/ Block/ School) at which data entry is made

- In state MIS data is entered at the block level by the Block resource person who is full time dedicated staff of mid day meal scheme .
- For every entry of data of the school into the MIS portal Block resource person being paid Rs. 08/- per school.

2.12.3 Availability of manpower for web based MIS

- In state MIS data is entered at the block level by the Block resource person who is full time dedicated staff of mid day meal scheme .
- For every entry of data of the school into the MIS portal Block resource person being paid Rs. 08/- per school.

2.12.4 Mechanism for ensuring timely data entry and quality of data

- For every entry of data of the school into the MIS portal Block resource person being paid Rs. 08/- per school
- Failure of entering data on time @Rs.32/- per school is being deducted from incentive of Block resource person

2.12.5 Whether MIS data is being used for monitoring purpose and details thereof.

Yes.

- Through MIS advice being generated for foodgrains
- Through MIS advice being generated for fund
- Meal no served schools monitoring through MIS

- Regularity of serving of MDM in the school is monitor through MIS
- Timely payment of cook cum helper is monitored
- Inspection of school by different officials is monitored

2.13 Systems to ensure transparency, accountability and openness in all aspects of programme implementation.

2.13.1 Display of logo, entitlement of children and other information at a prominent visible place in school

- Yes

2.13.2 Dissemination of information through MDM website

- Yes,66105 schools websites have been created

2.13.3 Provisions for community monitoring at school level i.e. Mother Roaster, Inspection register.

- Yes

2.13.4 Tasting of meals by community members,

- Yes

2.13.5 Conducting Social Audit

- Bihar Rajya Madhyan Bhojan Yojana Samiti has entered into memorandum of understanding (MOU) with Asian Development Research Institute(ADRI) to conduct social audit in two district of Bihar .
- Twenty schools of each selected district i.e Lakhisarai and Saran is being audited

2.14 Measures taken to rectify

2.14.1 Inter-district low and uneven utilization of foodgrains and cooking cost

- Sub allotment of Foodgrains and cooking cost to the school is done through self generating MIS.

2.14.2 Intra-district mismatch in utilization of food grains and cooking cost.

- Sub allotment of Foodgrains and cooking cost to the school is done through self generating MIS.

2.14.3 Delay in delivering cooking cost at school level.

- Timely Coking cost is transferred to school through RTGS

2.14.4 Delay in payment to FCI

- The monthly state level meeting of DPOs ,MDM, officers of the SFC, FCI and related banks.
- In state level Steering cum monitoring committee meeting lifting of grains issues is discuss with MD, SFC

- Monthly state level meeting is held with representative of FCI and SFC
- Regular district level monthly review meeting held under the chairmanship of District Magistrate

2.14.5 Mismatch of data reported through various sources (QPR, AWP& B, MIS etc)

- State government has his own MIS running since may 2011. Mainly school level data is collected by the Block resource person from the school is entered into online MIS for which they get @Rs. 08/- per school. In case of failure @Rs.32/- deducted from their incentive. It has been observed that data of few schools is not entered on time due to number of reasons like HM transfer to another school, delay in charge taken over etc. This reflect in over all quarterly reports. Steps has taken to overcome this problem as provision has been made in MIS to centered of previous month after having permission from the state office.
Direction has been given vide letter no. 436 dated 04.03.2014

2.15 Details of Evaluation studies conducted by State/UTs and summary of its findings.

2.16 Write up on best/ innovative practices followed in the State.

- Jingle prepared for media propagation.
- News paper advertisement for better implementation MDM and awareness development.
- Tracking of CUG mobile connection of block resource persons to monitor the field visit.
- Provision of monetary award to all the member of VSS of any one the school of the district serving mid day meal.

2.17 Untoward incidents

2.17.1 Instances of unhygienic food served, children falling ill

- Seven incidences reported

2.17.2 Sub-standard supplies,

- NIL

2.17.3 Diversion/ misuse of resources,

- NIL

2.17.4 Social discrimination

- NIL

2.17.5 Action taken and safety measures adopted to avoid recurrence of such incidents.

- Food to be inspected and tasted before serving to the children by the cooks , teacher and VSS member.

2.18 Quality of food

2.18.1 System of Tasting of food by teachers/community. Maintenance of tasting register at school level.

Direction has been given to all school after preparation of mid-day meal before serving in following order :-

- First taste by head master before serving of MDM .
- Second taste by cook cum helper before serving of MDM
- Third taste by VSS before serving of MDM

2.18.2 Testing of food sample by any reputed labs for the presence of nutrients and presence of microbes, if any, as per norms of Mid-Day Meal.

UNICEF has been requested.

Directorate is communicating with food and adulteration department for opening of new labs at district level. Those district where meal provided by NGO on regular basis collecting food sample from NGO centralize kitchen and send for testing at govt. labs stabilised at HQ. on monthly basis. District also collect food sample directly from school and send it for testing.

2.18.3 Engagement of NABL labs for the testing of Meals.

- Not yet

2.19 Involvement of NGOs/ Trusts.

2.19.1 Modalities for engagement of NGOs/ Trusts for serving of MDM through centralized kitchen.

- The NGOs are engaged to supply Mid day Meal through centralized kitchen in the schools situated in the urban area only in 12 districts of the state. NGOs are guided to maintain the quantity and quality of food. They has been instructed strictly to follow the instructions of the department regarding the supply of food in good condition with the prescribed quantity of food grains, vegetables etc in closed containers in order to ensure safety.

2.19.2 Whether NGOs/ Trusts are serving meal in rural areas

- On pilot basis rural areas of two district is covered through centralized kitchen.

2.19.3 Maximum distance and time taken for delivery of food from centralized kitchen and school.

- Only urban area of ten district of Bihar is covered through centralized kitchen
- Maximum distance covered five kms and time taken one hour

2.19.4 Measures taken to ensure delivery of hot cooked meals to schools

2.19.4.1 Responsibility of receiving cooked meals at the schools from the centralized kitchen.

- Lies with the Head Master

2.19.4.2 Whether the containers are sealed at the time of supply of meals to schools,

- Yes

2.19.4.3 Tentative time of delivery of meals at schools from centralized kitchen.

- 30- to 45 minutes before launch hour of school.

2.19.4.5 Testing of food samples at centralized kitchens

- Centralized kitchens Incharge
- Block resource person of that block

2.20 Status of Rastriya Bal Swasthya Karyakram (School Health Programme)

2.20.4 Provision of micro- nutrients, Vitamin-A, de-worming medicine, Iron and Folic acid (WIFS), Zinc.

- Yes. Also observed in the evaluation study of A.N.Sinha Institute, Patna half yearly monitoring report for the period of April 2014 to September 2014

2.20.5 Distribution of spectacles to children with refractive error,

- Yes

2.20.6 Recording of height, weight etc.

- Yes

2.20.7 Number of visits made by the RBSK team for the health check- up of the children.

- One time in a year.

2.21 Present monitoring structure at various levels. Strategy for establishment of monitoring cell at various levels viz. Block, District and State level for effective monitoring of the scheme.

- State level steering-cum-monitoring committee is headed by the chief secretary, Govt. of Bihar
- District level steering-cum-monitoring committee is headed by the District Magistrate.
- Block level steering-cum-monitoring committee is headed by the block level officer.
- School level monitoring committee is headed by the Chairman of Vidyalaya Shikha Samiti .
- Tablet based inspection
- Dopahar(IVRS) technology has been used to asked VSS meeting held in last quarter and report has been published online.

2.22 Meetings of Steering cum Monitoring Committees at the Block, District and State level

2.22.1 Number of meetings held at various level and gist of the issues discussed in the meeting,

- Block level SMC -1173
- District level SMC-57
- State level SMC-2

Issues discussed at various level SMC

- Better implementation of the scheme
- Active participation of VSS
- Regular monitoring of the scheme
- Cleanliness of Kitchen shed
- Proper and regular tasting of food
- Supply of FAQ grain
- Timely payment of cook cum helper
- Maintaining buffer stock
- Timely payment of FCI

2.22.2 Action taken on the decisions taken during these meetings.

- Payments of cook are made through bank account
- Fund and grain allotted through self generate advice of MIS.

2.23 Frequency of meeting of District Level Committee held under the chairmanship of senior most MP of the District to monitor the scheme. Gist of the issues discussed and action taken thereon.

- Five meeting held

2.24 Arrangement for official inspections to MDM centres /schools and percentage of schools inspected and summary of findings and remedial measures taken.

- District In Charge MDM to inspect 15 School a month.
- Block resource person to visit 30 school or 25% of total school.
- Other officials than education department to visit 10% school.
- Difference between physical counting and the average beneficiaries for last 6 days found more than 10% then recovery punishment is awarded.

2.25 Feedback/comments in respect of report of Monitoring Institutions designated for your State/UTs to monitor implementation of MDM and action taken thereon.

A.N Sinha Institute(Report first half yearly 2014-15)

- 82% of the sample schools receiving cooking cost in advance regularly
- 84.5% of the sample schools having buffer stock of foodgrains for one month
- 84.5% of the sample schools having buffer stock of foodgrains for one month
- 70% of the sample schools cook cum helper get honorarium on time .
- 94% of the sample schools VSS/SMC engage cook cum helper
- 82% of the sample schools serve hot cooked meal
- 85% of the sample schools uniformly follow menu .
- 86% of the sample schools menu include locally available ingredients

Public Evaluation of entitlement programme (PEEP)

- This survey initiated by the researchers at the Indian Institute of Technology(IIT).Delhi with support from the Indian Council of Social Science Research (ICSSR).
- Two of the poorest district (Katihar and Muzaffarpur) of the state were covered for study.
- According to the survey most schools have a kitchen, a cook and basic equipment.
- The weekly menu is usually displayed on the wall, along with the scheme's logo.
- 61% parents were satisfied with the quality of food served .

2.26 Details of the Contingency Plan to avoid any untoward incident. Printing of important phone numbers (eg. Primary health center, Hospital, Fire brigade etc) on the walls of school building.

- Distribution of pamphlet on national festival like 15th august, 26th January containing all the important no. of district.
- Direction has been issued to paint important telephone no. of district on the wall of school.

2.27 Grievance Redressal Mechanism

2.27.1 Details regarding Grievance Redressal at all levels,

- A toll free no 1800-345-6208 has been installed at directorate level . This toll free no is integrated with online MIS .
- E.mail address and telephone numbers of all district level officers and state level officers have been posted on dopahar org. for the public view and for sending grievance regarding mid day meal scheme.
- Mid-day Meal issues are also dealt with at Weekly Janta Darbar of district magistrate and monthly Janta Darbar of the Honorable chief minister.
- Every Friday Director Mid-day Meal meets people having complain against MDM.
- Appeal against the decision of the district mid-day meal authorities are heard by Director mid-day meal on first and fourth Tuesday of every month.
- Second appeal at the level of Principal Secretary is heard when ever required .

2.27.2 Details of complaints received i.e. Nature of complaints etc.

- Timely payment of Cook.
- To increase the honorarium of cook cum helper.
- To increase transportation cost.

2.27.3 Time schedule for disposal of complaints,

- Those complain which can be resolve at the district level is addressed within 15 days.

2.27.4 Details of action taken on the complaints.

- MHRD ,Govt. of India has been requested to increase the honorarium to cook cum helpers and the rates of transportation cost.
- A grievance redressal mechanism has been formed in the district and state headquarters.
- The grievances are being redressed regularly by taking necessary actions.
- A toll free number telephone no. 18003456208 has been advertised for receiving and registering telephonic grievance.
- E.mail address and telephone numbers of all headmasters/BRPs/district level officers and state level officers have been posted on dopahar org. for the public view and for sending grievance regarding mid day meal scheme.
- Janta Darbar is organized at various like district level, state level etc.

2.28 Details regarding Awareness Generation & IEC activities and Media campaign, carried out at State/district/block/school level.

- Jingle prepared for media propagation.
- Newspaper advertisement for better implementation of MDM and awareness development among VSS & common people.



बिहार सरकार
शिक्षा विभाग

'प्रत्येक विद्यालय, प्रत्येक कार्य दिवस, प्रत्येक उपस्थित बच्चे को गुणवत्तापूर्ण मध्याह्न भोजन'

बिहार के लगभग 67,000 प्राथमिक एवं मध्य विद्यालयों में मध्याह्न भोजन योजना संबंधित विद्यालय के विद्यालय शिक्षा समिति के माध्यम से चलाई जा रही है। इससे प्रतिदिन एक करोड़ से अधिक बच्चे लाभान्वित हो रहे हैं। साथ ही विभिन्न विद्यालयों में दो लाख से अधिक रसोईया-सह-सहायक बच्चों को गर्म भोजन उपलब्ध कराने में योगदान दे रहे हैं।

- ग्राम पंचायत / नगर निकाय के संबंधित वार्ड के सदस्य (अध्यक्ष) (1)
- विद्यालय का प्रधानाध्यापक / प्रधान शिक्षक (1)
- जीविका के ग्राम संगठन एवं महिला समाख्ये के महिला समूह के अध्यक्ष एवं प्रधान (2)
- छात्र प्रतिनिधि (2, एक छात्र, एक छात्रा)
- विद्यालय के वरिष्ठतम शिक्षक (1)
- दानदाता (1) (यदि कोई हो)

समिति के सदस्यों का घयन बर्धनित सदस्यों के द्वारा अपने में से बहुमत से किया जाता है। समिति की बैठक प्रत्येक माह में एक बार अनिवार्य रूप से किए जाने का प्रावधान है।

प्रत्येक विद्यालय में बच्चों को भोजन ग्रहण करने के आधा घंटा पहले विद्यालय के प्रधानाध्यापक, वरिष्ठतम शिक्षक, विद्यालय शिक्षा समिति के एक सदस्य तथा रसोईया-सह-सहायक के द्वारा खाने का चखा जाना अनिवार्य है।

प्रत्येक विद्यालय में एक पोषाहार पंजी अनिवार्य रूप से संचारित है। सामाजिक अन्वेषण (Social Audit) की दिशा में यह आवश्यक है कि पोषाहार पंजी का अवलोकन किसी भी इच्छुक व्यक्ति द्वारा किये जाने का अवसर दिया जाए। इस पंजी में खाद्यान्न, राशि के साथ-साथ लानान्वितों की विवरणी भी उपलब्ध रहता है।

सोमवार	- चावल + मिश्रित दाल + हरी सब्जी।
मंगलवार	- जीरा चावल + सोयाबीन आलू की सब्जी।
बुधवार	- सिबड़ी (हरी सब्जी युक्त) + चोथा।
गुरुवार	- चावल + मिश्रित दाल + हरी सब्जी।
शनिवार	- पुलाव + काजूली चना / लाल चना का छोला + हरा सलाद।
	- सिबड़ी (हरी सब्जी युक्त) + चोथा।

साफ-सफाई एवं सुरक्षा सुनिश्चित करने के लिए आवश्यक है कि

- मध्याह्न भोजन तैयार करने के पूर्व रसोईया अपना हाथ धोएँ एवं मुँह साबुन से साफ कर सूती कपड़ा से पोंछ लें।
- मध्याह्न भोजन तैयार करते समय इस बात के लिए सतर्क रहें कि कोई भी बाहरी वस्तु जैसे- कीट, फलिंगे, छिपकिली, बाल अथवा अन्य कोई वस्तु भोजन में नहीं जाये।
- सतर्कता के बावजूद यदि बाहरी वस्तु भोजन में गिर जाये अथवा भोजन के विषाक्त होने का संशय भी हो तो सभी भोजन को अविलंब गहरा गुब्बारा खोदकर मिट्टी से ढक दिया जाए।

मध्याह्न भोजन ग्रहण करने के उपरांत यदि बच्चों के घेठ में दर्द, उल्टी, बेहोशी आदि के लक्षण दृष्टिगोचर हो तो अविलंब इस आशय की सूचना प्राथमिक स्वास्थ्य केंद्र, स्थानीय थाना, निकटवर्ती डॉक्टर, जिला पुलिस अधीक्षक, जिला पदाधिकारी एवं एम्बुलेंस सेवा प्रदाता (दूरभाष संख्या- 102 / 108) को दी जाए।

विद्यालय शिक्षा समिति से अपील :

योजना के संचालन में विद्यालय शिक्षा समिति की अहम भूमिका है। विद्यालय शिक्षा समिति के सदस्यों एवं अध्यक्ष से अपील है कि विद्यालय स्तर पर संचालित मध्याह्न भोजन योजना के सफल संचालन में सक्रिय भागीदारी निभायें।



बिहार राज्य मध्याह्न भोजन योजना समिति, बिहार, पटना

प्रधान सचिव
शिक्षा विभाग, बिहार सरकार

- Tracking of CUG mobile connection of block resource persons for tracking the trackers (to monitor the field visits of the block resource persons).
- Scheme of developing kitchen garden in at least five schools in a block.

- Provision of monetary award to all the member of the best VSS of the district serving mid-day meal.
- Websites of 66105 schools (www.madhyambhojanvihar.in) which present information like :-
 - (i) About the school including bank account number,
 - (ii) Name & Mobile no. of Headmaster,
 - (iii) Name & Mobile no. of the Secretary of the VSS,
 - (iv) Name of Cooks,
 - (v) Name & Mobile no. of the concerned Block Resource Person,
 - (vi) Contact no. of Primary Health Centre,
 - (vii) Information about the mid-day meal scheme, Menu,
 - (viii) Last three months grain & fund status,
 - (ix) IVRS based day wise information about enrollment, attendance & beneficiaries, weekly availability of grain & fund, information about VSS meeting;
 - (x) Photographs of kitchen & other related items.

The screenshot displays the homepage of the website www.madhyambhojanvihar.in. The header features the school name "UMS AJMATPUR MAINAPUR" and "ARARIA, ARARIA" in yellow text on a blue background. Below the header is a navigation menu with links in Hindi: "होम", "विद्यालय के बारे में", "मध्याह्न भोजन योजना", "विद्यालय शिक्षा समिति", "पुरस्कार योजना", "प्रधानाध्यापक", "फोटो गैलरी", and "संपर्क".

On the left side, there is a "Search schools" section with a dropdown menu for "District" listing various districts in Bihar, including ARARIA, ARWAL, AURANGABAD, BANKA, BEGUSARAI, BHAGALPUR, BHOJPUR, BUXAR, DARBHANGA, GAYA, and GORAKHPUR.

The central part of the page is a photo gallery showing children sitting on the floor eating their mid-day meals. To the right of the gallery is a "Useful Links" section with links to "MCMS Bihar", "Education Department", "Bihar Education Project", "Madhyamik Siksha Parishad", and "Vidyalaya Vihar".

Below the gallery is a "Sign in" form with fields for "User Id" and "Password", a "Login" button, and a "Forgot Password" link. To the right of the sign-in form is a "Technical Support" section listing "Abhijeet Kumar" with phone numbers +91 7808320020 and +91 7808320019, and "Kumar Rishkesh" with phone number +91 7808320019.

The footer contains a "Home | Vidyalaya Vihar | Vidya Vihar | Contact" navigation bar, a "Newsletter Signup" form with an "Enter Email Here" field and a "SUBMIT" button, and social media icons for Facebook, Google+, and Twitter. The footer also includes the text "Developed by BSEIDC Ltd., Patna" and "Copyright © 2014 - All Rights Reserved - M.D.M.S., Patna".

2.29 Overall assessment of the manner in which implementation of the programme is contributing to the programme objectives and an analysis of strengths and weaknesses of the programme implementation.

- The overall impact of the mid day meal scheme can be summarized as under,
- The children enrollment and attendance increased and the average per day beneficiaries increased by 23 % in 2012-13 over the 2013-14.
- Retention of the children in the schools has increased and drop out reduced.
- The habit of hand washing and nail cutting development in the children.
- Lakhs of man and women of the weaker and deprived section got employment as cook cum helpers.
- The sense of social equality being developed in the children in primary age.
- As per monitoring institute report PEEF “In fact the MDM has improved the enrolment and attendance of children in schools especially in rural area. Comparatively least the poor and below poverty line children were getting the kind of food which they would have otherwise not got at their homes. Thus the MDM has attracted weaker sections of parents to send their children to school for education. The nutritional state of the children especially of weaker section children seems to have favorably positive.”

2.30 Contribution by community in the form of Tithi Bhojan or any other similar practices in the State/ UT etc.

- NONE

2.31 Any other issues and Suggestions.

- There is a need for continuation of substantial support of central government for the mid-day meal scheme considering the huge number of children covered in Bihar.
- Increase of monthly honorarium of cook-cum-helper.
- Increase in the rate of transportation cost which has not been revised since 2006.
- Grant for kitchen device needs to be increased (Presently Rs. 5000 per school).
