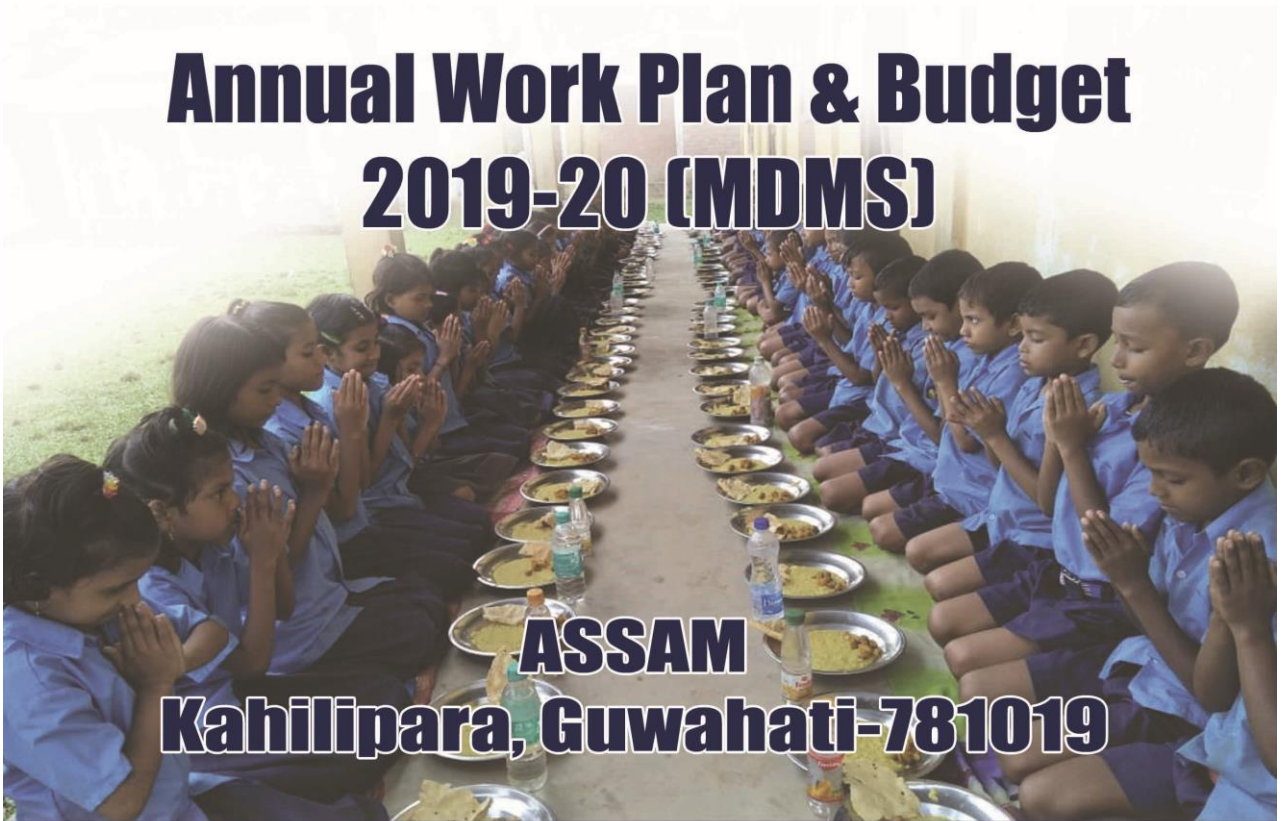




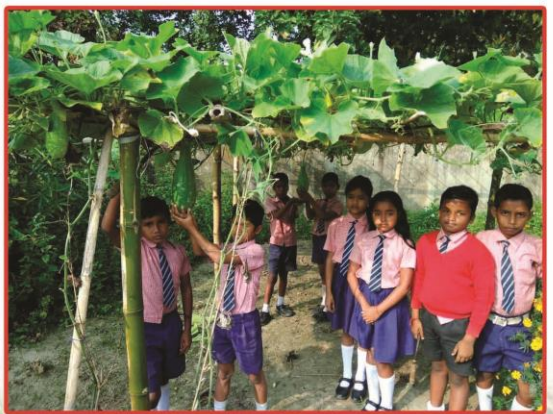
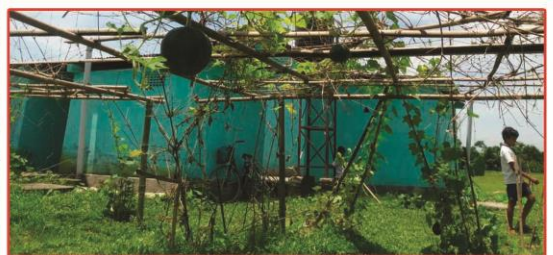
मध्याह्न भोजन योजना  
Mid Day Meal Scheme

# **National Programme of Mid Day Meal in Schools (MDMS)**

## **Annual Work Plan & Budget 2019-20 (MDMS)**



# Kitchen Garden in Schools



## Kitchen Garden in school



# Sampriti Bhojan - An Innovative Practice





## Sampriti Bhojan - An Innovative Practice



# Community made Dining Hall in Schools



# Group Handwashing



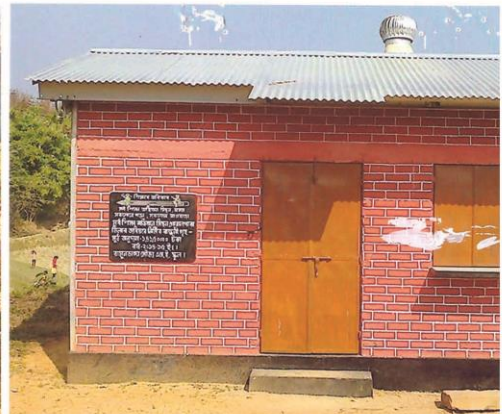
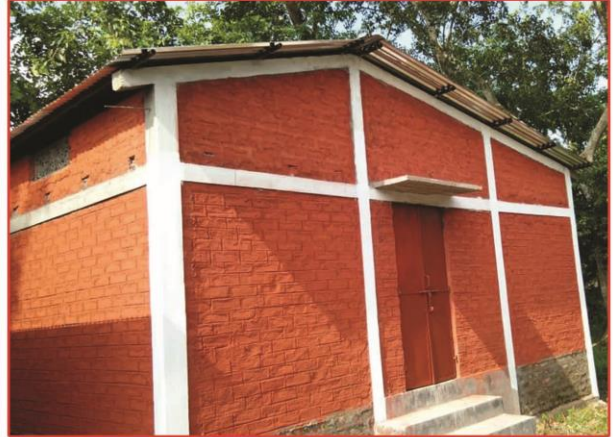


# Children enjoying Mid-Day Meal in Schools





## Kitchen cum Store



## 1. Introduction:

### **State Profile of the state of Assam:**

Assam the rich, green land of rolling plains and dense forests is the gateway to the north eastern part of India. The mighty Brahmaputra river that has its origins in Tibet charts its majestic course through this state. This mystic land of eternal blue hills and beautiful rivers is renowned for its tea, rich flora and fauna, the world famous one horned rhinoceros and other rare species of wildlife on the verge of extinction. Barring Africa, there is perhaps no part of the world where such a variety of wildlife exists.

### **History:**

In the Mahabharata and the Puranas, Assam has been referred to as 'Kamarupa'. The inhabitants of the state are a mixture of the Mongol-Aryan culture. The migration of people from South East Asia and from southern China to Assam in fact pre-dates the movement of the Aryan people. Although blurred by the mists of time, the history of ancient Assam has much to do with the march of communities in search of abundant and productive land, of which there was plenty. The land of the Kiratas and the kingdom of Pragjyotisha, with its capital at present day Guwahati, is cited in Vedic literature. At the time when the epic battles of the Mahabharata were being fought in the plains of Northern India, the Pragjyotishaempire extended to the Bay of Bengal. In the Puranas and later works, the land of Kamarupa is referred to. The Kamakhya Temple near Guwahati is referred to in the Vishnu Purana. According to the KalikaPuran and the Jogni Tantra, the realm of Kamarupa included not only the valley of the Brahmaputra, but also Bhutan, Rangpur, Koch Bihar, Mymensingh and the Garo Hills. According to Hiuen Tsang's descriptions in the seventh century, the Kamarupa country was about 17,000 miles in circuit.

The renowned king of Assam, Narakasura, ruled Kamarupa from his capital called Pragjyotishpur. Most of the early references of state are derived from the writings of Huein-tsang, who visited the state in the court of Raja Bhaskar Varman.

The Ahoms ventured into Assam somewhere around 1228 A.D. The foundations of present-day Assam are attributable to yet another migration from the east, of the Tai Ahoms, in the 1311 century. Led by their redoubtable general Sukapha, an Ahom army crossed the Patkai range into the Brahmaputra valley, to establish an empire that would eventually extend throughout the valley. The state reached its golden period under the Ahom dynasty. The dynasty reached at its height under the rule of RudraSingha. The Ahom Dynasty gradually decayed due to a Burmese invasion in 1817, which lasted for five years. Eventually the British threw out the Burmese and Assam became a part of British India in 1826. In 1838, the entire north-eastern India was made part of the Bengal Presidency by the British. The Ahom rule was dismantled and Bengali was made the official language. In the year 1874, Assam was separated from Bengal and Shillong was made its official capital.

In due course of the time after the independence in 1947, Assam was divided into seven different states as Meghalaya, Mizoram, Manipur, Arunachal, Tripura and Nagaland.

### **Geography:**

The state of Assam is spread over an area of approximately 30,285 square miles (78,438 square kilometers). The topography of the state is mainly composed of plains and river valleys. Geographically, the state can be divided into two major regions: in the north there is the Brahmaputra Valley, the Barak Valley in the south, and the Cachar Hills divide both the valleys. But the Brahmaputra Valley occupies most of the state running from north to the west, and exiting into Bangladesh.

The state is on the foothills of the Eastern Himalayas. On the north lies the Kingdom of Bhutan while to the east the state is covered by the states of Arunachal, Nagaland and Manipur. To the west of Assam, lie Meghalaya and Mizoram and to the west is Tripura and Bangladesh. The state is surrounded by a ring of blue hills. The only male river of India, the mighty Brahmaputra flows through the heart of the state. It is also the state of the Goddess Kamakhya. The virgin forests of Assam are yet another source of economic sufficiency of the place. The good quality woods of these dense forests are a common yet vital input for the flourishing furniture industry of Assam.

As a whole it can be said that **location of Assam** suggests an enriching geographical extravaganza. There are 145 Educational Blocks in the State of Assam covering these 26 districts. SSA, Assam is submitting its Annual Work Plan & Budget for 26 districts (Leaving only the Kamrup Metro) for the year 2012-13.

The state has an area of 78,438 sq. kilo metre with population of 3.11 crores comprising of 1.59 crores males and 1.52crore females. The density, per person per sq. km. is 397. The sex ratio (females per one thousand males) is 954. An agrarian economy since time immemorial, more than 85.91% of Assam's workforce is engaged in the agricultural and allied activities while the urban population is about 14.08% only.

The literacy rate of the State is 73.18% of which the male and female literacy rates are 78.81% and 62.27% respectively. *Literacy rate in Assam has seen upward trend as per 2011 population census.*

### **Society and Culture:**

Assam is a state with diversified cultures comprising a multi-ethnic society. The culture of Assam is an amalgamation of richness of various ethnic practices and beliefs. The Assamese are a mixture of Mongolian-Tibetan, Aryan, and Burman ethnic origins. Their official language, which is called Assamese, is closely related to Bengali. An unbroken record of Assamese literary history is traceable from the 14th century. About two-thirds of the Assamese are Hindus, and about a quarter are Muslim. The Muslims are mostly recent settlers from Bangladesh or converts belonging to the lower strata of Hindu society. A majority of the Hindus accept Vaisnavism, which is based on the deity Vishnu. The hilly margins of the plain are inhabited by the hill tribes of the Garo, Khasi, and Hajong. The Bodo are the largest minority group in Assam and are concentrated in the northern areas of the Brahmaputra River valley.

Assamese is the principal language of the state. English, Hindi, Bengali are also understood across the length and breadth of the State.

Artist and sculptors, masons and architects, and others practicing minor crafts such as weavers, spinners, potters, goldsmiths, artisans of ivory, wood, bamboo, cane and hide flourished in Assam from ancient times. The Eri, Muga and Pat are the important silk products of Assam. Weaving is another important aspect of the cultural life of the people of Assam, particularly of the women.

The most important celebrations of the state are the three Bihu festivals. Originally agricultural festivals, these are observed with great enthusiasm irrespective of caste, creed, and religious affinity.

The state of Assam has produced personalities like Sankardeva, the founder of Vaishnavite movement and pioneer of **satra, borgeet, ankiyabhaona, naamghar** etc. patriot like LachitBorphukan, Kanaklata, Mulagabharu, literary figures like LakshminathBezbarua, cultural icons like Bishnu Rabha, Jyotiprasad Agarwala, Pramathesh Barua , Parliamentaries like Hem Barua, multifaceted legends and genius of international repute like Dr. Bhupen Hazarika, Dr. Mamoni Raisam Goswami.

### **Economy and Infrastructure :**

Assam's economy is rural and agricultural. Tea is cultivated in the hilly regions, and the state provides much of the tea grown in India. The valley of the Brahmaputra River is important for rice, the major food product of Assam. Other agricultural products are jute, sugarcane, cotton, oranges, and potatoes. The cultivation of silkworms is common in many areas. Lumber is valuable to the economy of Assam, and the extraction of crude oil is gaining importance. The primary industries of Assam are textile manufacturing, cement production, and oil refining.

Currently Assam has a total road network of 69,000 km that covers both metallic and non metallic roads. Assam is the railway centre of the North East with the total railway track length of 3,816.15 km comprising both meter gauge and broad gauge lines Lokpriya Gopinath Bordoloi Airport (Guwahati), Salonibari (Tezpur), Mohanbari (Dibrugarh), Lilabari (Lakhimpur), Kumbhirgram (Silchar) and Rowriah (Jorhat) are the civil airports in the State.

### **Key Socio-Economic indicators:**

<b><u>Geographical Data</u></b>		
Density	397/km <sup>2</sup>	
Area	78,438 km <sup>2</sup> (of this 20% is hilly terrain)	
State Boundaries	East	Arunachal Pradesh, Nagaland and Manipur
	West	West Bengal and Meghalaya
	North	Arunachal Pradesh
	South	Nagaland, Manipur, Mizoram, Meghalaya and Tripura
International Boundary	North	Bhutan
	West	Bangladesh
Geographic	Latitude	24° to 28° North
Coordinates:	Longitude	90° to 96° East
Forest Cover	35.48 %	
<b><u>Statistical Data</u></b>		
Population (2011)	3,11,69,272 [Male : 1,59,54,927, Female : 1,52,14,345]	
Density of population	397 per sq. km. (India 382 per sq. km.)	
Literacy Rate (2011)	73.18% [Male : 78.81%, Female : 62.27%]	
Sex Ratio	1000 : 954	
Decadal growth rate	16.93% population (2001-2011)	

### **Population:**

According to the census of India 2011, the population of Assam stands at 3,11,69,272 of which 1,59,54,927 are males and 1,52,14,345 females. The decadal growth rate of population of the state during the decade 2001-2011 is 16.93 % as against 17.64 % for the Country as a whole. Following table shows some important features of population of Assam:

Sl. No.	Particulars	Unit	1991 Census	2001 Census	2011 census
1	Population	Lakh	224	267	311
2	Decadal growth	Percent	24.24	18.92	16.93
3	Density	Per sq. km.	286	340	397
4	Sex ratio	Females per 1000 males	923	932	954
5	Literacy	Percent	52.89	63.25	73.18
6	Urban Population	Percent	11.10	12.90	14.08
7	Rural population	Percent	88.90	87.10	85.9
8	S.C. Population	Percent	7.40	6.85	-
9	S.T. Population	Percent	12.83	12.41	-

Source: Economic Survey of Assam, 2006-07

### Highlights of Demographic profile of the State:

- Assam ranks 14th in the size of population among all the states of India.
- Assam ranks 18th in sex ratio among the States of India.
- Assam ranks 15th in respect of density among the States of India.
- The share of population of Assam to the total population of India is 2.59%.

### Highlights of comparison of Demographic profile of the State with the country:

Population and its growth in Assam							
India/ States	Population 2011			Rank in Population	Percentage Decadal Growth		Rank in Growth Rate 2011
	Persons	Males	Females		1981- 1991	2001-2011	
INDIA	1,210,193,422	623,724,248	586,469,174	-	23.86	21.34	-
Assam	3,11,69,272	1,59,54,927	1,52,14,345	14	24.24	18.85	23

### POPULATION DENSITY:

Population density in Assam						
India/States/Union Territories	Population 2011			Population density (Per Sq. Km.)		Rank in Density 2011
	Persons	Males	Females	2001	2011	
INDIA	1,210,193,422	623,724,248	586,469,174	324	382	
Assam	3,11,69,272	1,59,54,927	1,52,14,345	340	397	15

### SEX RATIO:

Sex ratio in Assam						
India/States/Union Territories	Population 2011			Sex Ratio (females per 1000 males)		Rank in Sex Ratio 2011
	Persons	Males	Females	2001	2011	
INDIA	1,210,193,422	623,724,248	586,469,174	933	940	
Assam	3,11,69,272	1,59,54,927	1,52,14,345	932	954	18

### Key Economic Indicators:

The State possesses an estimated 320 million tons of coal reserves, oil and natural gas reserves sufficient to sustain current production levels for at least another fifty years, and a vast, though largely untapped potential for power generation. Location ally there are several positive attributes. **Guwahati** is the communications and transportation hub for much of the entire **North East**. The State's waterways can transport goods cheaply and efficiently. There is an extensive and growing railway network, one that is being converted in substantial part to broad gauge. The State is well placed to service the needs and markets of other States of the North East. A modicum of incremental investment would allow access to other countries, in particular to the growing economies of South East Asia.

### Mineral Resources:

Assam is endowed with petroleum, natural gas, coal, limestone and many other minor minerals such as magnetic quartzite, kaolin, sillimanites, clay and feldspar. A small quantity of iron ore is also available in western parts of Assam. There are four oil refineries", several large and medium sector

manufacturing industries, including sugar mills, textile spinning units and processing houses, cement plants and fertilizer units. All of this is in addition to the traditional strengths in tea and jute. There is potential to set up industries in the hydrocarbon sector - gas cracker plants, aromatic complexes and downstream and ancillary industries.

Despite this, Assam's economic development is lagging behind that of the rest of the country - and the gap is increasing. At Independence, Assam's per capita income was only marginally less (a difference of 4 percent) than that of the average for the country. In 1998, the average per capita income for the country was over 1.8 times that of Assam. Further the gap between the state's average level of living and that of the national average has been increasing in recent years. The average per capita income of Assam stood at Rs 1374 for the triennium 1980-81 to 1982-83 at 1980-81 prices. It was about 18 per cent lower than the corresponding national estimate of Rs 1672 for India as a whole. The difference widened to more than 45 per cent in recent years when average per capita income of Assam and all-India stood at Rs 1702 and Rs 3211 respectively at 1980-81 prices for the triennium 1999-00 to 2001-02. The relative stagnancy in the growth of income is attributable in turn to the inability of each of the component sectors to grow at rates that would allow the State to reach the levels attained by the rest of the country.

In the agriculture sector, the overall growth rates since the 1980s has been a little over 2 percent, rates not sufficient to generate surpluses for investment, or create purchasing power in the rural sector to provide a market for local industries. Not only do floods wreak annual havoc, but the accompanying uncertainty prevents farmers from taking risks and making investments in land improvement, and in higher cost, albeit high yielding, technologies and practices.

Industrial diversification and growth has been constrained by the inadequacy and quality of complementary infrastructure, the geographical isolation of the region, and the lack of well developed markets.

The inability to build on the promise afforded by the horticulture sector is largely attributable to the deficiencies in complementary investments, in storage, rural transportation networks and in market facilities. For the same reasons, fisheries, poultry farming and dairy are yet to acquire the momentum required to raise incomes substantially and sustainably.

The net State domestic product of Assam in real terms i.e., at constant (1999-2000) prices has been estimated at Rs.42201.55 crore in 2003-2004 as against Rs.39857.30 crore in 2004-2005 (P) and Rs.37905.37 crore in 2003-04. Thus, NSDP registered a growth of 5.9% in 2005-2006 over 2002-2003 as against a growth of 3.81% witnessed in 2002-2003 over 2001-2002. The quick estimates of the Gross State Domestic Product (GSDP) of Assam for the year 2005-06 shows that the growth of GSDP at constant prices (1999-2000) has increased by 5.9 per cent during the year as against increase of 5.3 per cent in 2004-05 (Provisional Estimates). The quick estimate of GSDP of Assam in 2005-06 at constant prices 1999-2000 (Q) has been estimated at Rs.46393.32 Crore as against Rs.43806.38 Crore in 2004-05 (P). Over the recent few years, the State has had to pass through a lot of constraints such as insurgency problem, recurrence of natural calamities in the shape of flood, drought etc. and despite of such constraints, the State has been able to achieve considerable progress as is revealed by the overall growth of the State's economy in terms of GSDP which has increased during the 10th five year plan period (2001-02 to 2006-07) over the 9th five year plan (1997-98 to 2001-02) to 5.75 per cent from 2.73 per cent.

#### **Population below poverty line:**

In absolute terms, the number of poor people in the State increased from 7.8 million in 1983 to 9.5 million in 1999-2000. In 1999-2000, 36.09 percent of the State's population continued to live below the poverty line, a figure appreciably above the national average (26.10 percent)<sup>15</sup>. It has been reported that Assam's Below Poverty Line (BPL) population has fallen to 19.7 per cent in 2004-05

compared to 36.09 per cent in 1999-2000 and 40.86 per cent in 1993-94 as against all-India figures for the same are 27.50 per cent in 2004-05, 26.10 per cent in 1999-2000 and 35.97 per cent in 1993-94 respectively on the basis of uniform recall period consumption. The survey for ascertaining the number of BPL people is being undertaken by the Deptt. of Planning & Development, Govt. of Assam

### 1.1 Brief history:

The Mid-day-Meal Scheme is a school meal programme of the Government of India designed to improve the nutritional status of school going children nationwide. The programme supplies free lunches on working days for children in primary and upper primary classes in government, government aided, local body, Education Guarantee Scheme and alternate innovative education centres, *Madarsa* and *Maqtab*s supported under Sarva Shiksha Abhiyan and National Child Labour Project schools run by the Ministry of Labour. Serving 12,00,00,000 children in over 12,65,000 schools and Education Guarantee Scheme centres, it is the largest such programme in the world.

With a view to enhancing enrolment, retention and attendance and simultaneously improving nutritional levels among children, the “**National Programme of Nutritional Support to Primary Education**” (NP-NSPE) was launched as a Centrally Sponsored Scheme on 15<sup>th</sup> August, 1995.

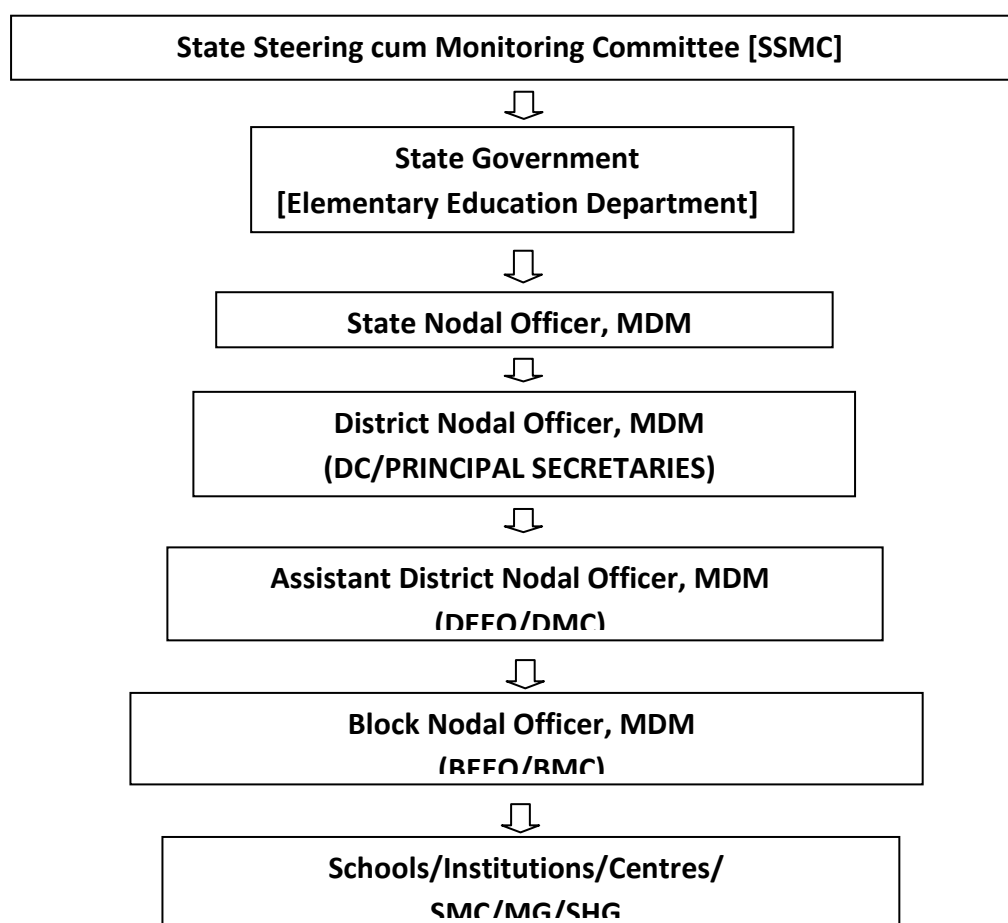
In the year 2001, Mid-Day-Meal Scheme became a cooked Mid-Day-Meal Scheme under which every child in every Government and Government aided primary school was to be served a prepared Mid-Day-Meal with a minimum content of 300 calories of energy and 8-12 gram protein per day for a minimum of 200 days. The Scheme was further extended in 2002 to cover not only children studying in Government, Government aided and local body schools, but also children studying in Education Guarantee Scheme (EGS) and Alternative & Innovative Education (AIE) centres.

In October 2007, the Scheme was extended to cover children of upper primary classes (i.e. class VI to VIII) studying in 3,479 Educationally Backwards Blocks (EBBs) and the name of the Scheme was changed from ‘National Programme of Nutritional Support to Primary Education’ to ‘**National Programme of Mid Day Meal in Schools**’. The Scheme was further revised in April 2008 to extend the scheme to recognized as well as unrecognized Madarsas / Maqtab supported under SSA.

Mid-Day-Meal Programme has been started in the State of Assam with effect from January, 2005 covering children reading in classes I-IV under the supervision as well as managerial control of Directorate of Elementary, Education, Assam. However, children reading in Upper Primary classes have been covered with effect from 2008-09 in Educationally Backward Blocks and all the children reading in Upper Primary classes (I-VIII) have been covered with effect from 2009-10.

The State Government has transferred the implementation of Mid-Day-Meal Scheme to SSA, Assam w.e.f. 01-01-2014. The scheme of Mid-Day Meal has now been running under the direct supervision of SSA, Assam.

## 1.2 Management structure:



## 1.3 Process of Plan Formulation at State and District level:

The Annual Work Plan and Budget, 2018-19 has been formulated on the basis of data / information reflected in the district level plans submitted by each district with due approval of the District Nodal Officer (DNO), MDMS cum Deputy Commissioner/ Principal Secretary and data available from U-DISE, 2017-18 & MDM MIS Web portal. In this connection, an orientation workshop was organized at State Nodal Office, MDMS, Assam, Guwahati for field level functionaries (DPM, DMISM, DAO, & officers involved in MDM works) to facilitate the process for formulation of AWP&B, 2019-20 in the light of direction given by MHRD, Govt. of India. Pursuant to this, districts were organized orientation meeting for key officials (including district & block level SSA officials) involved in the process for formulation of the plan.

Special attention has been paid to the process of plan formulation toward incorporating all the action taken points regarding commitment given to MHRD, Govt. of India for implementation of the scheme under AWP&B, 2018-19, issues/suggestions raised by primary stakeholders, Govt. of Assam and community through different meetings as well as feedback received through Toll Free Contact Centre.



**2. Description and assessment of the programme implemented in the current year (2018-19) and proposal for next year (2019-20) with reference to:**

**2.1 Regularity and wholesomeness of mid-day-meals served to children; interruptions if any and the reasons therefor problem areas for regular serving of meals and action taken to avoid Interruptions in future:**

The State Government has taken all needful measures to run Mid-Day Meal programme in the State with utmost care and attention. School Management Committees (SMCs) and Mothers Self Help Group are involved at school level for smooth functioning of the programme. District Administration, F.C.I. Authority and District Elementary Education Office/SSA along with Gaon Panchayat Samabai Samittee (GPSS) are also playing a vital role for smooth running of the programme. In fact, steps were taken to ensure providing of cooked and hot Mid-Day-Meal in school as per approved number of working days.

**2.2 System for cooking, serving and supervising mid-day meals in the schools**

**2.3 Details about weekly Menu.**

**2.3.1 Weekly Menu – Day wise:**

The SMCs have been directed to follow suggested weekly menu provided from State Nodal Office. The weekly menu is printed in MDM- calendar as IEC material which provided to all schools covered under Mid-Day Meal Schemes. The suggestive weekly menu is given below:

<b>Weekly Menu (Suggested)</b>	
Monday	Rice, Dal, Leafy Vegetable
Tuesday	Khisidi/ Soya, Leafy Vegetable
Wednesday	Rice, Egg Curry/ Local option
Thursday	Rice, Dal, Mix Vegetable
Friday	Rice, Dal, Leafy Vegetable
Saturday	Khisidi/ Pulao/Local option

**2.3.2 Additional Food items provided (fruits/milk/any other items), if any from State/UT resources. Frequency of their serving along with per unit cost per day.**

State Govt. has not yet been provided any additional fund for purchase of additional food items to the children. However, SMC has been providing locally available fruits among the children from time to time.

**2.3.3 Usage of Double Fortified Salt and Fortified Edible Oil; their availability and constraints, if any, for procuring these items.**

The school authority and SMCs have been directed to use double fortified salt for preparation of Mid-Day-Meal vide letter No. SSA/MDM/DFS/418/2014/2424 dtd. 01/06/2018. In fact, it is found to be a regular practice of the schools to use DFS in preparation of MDM.

#### **2.3.4 At what level menu is being decided / fixed.**

There is a suggestive menu for serving Mid-Day-Meal for schools fixed by the implementing agencies. However, there is a flexibility to change the menu by SMC according to the need and availability of local varieties.

#### **2.3.5 Provision of local variation in the menu, Inclusion of locally available ingredients/items in the menu as per the liking/taste of the children.**

There are local options for 2 (two) days in the menu suggested by implementing agency, where SMC can incorporate local varieties as per need and local eating habit.

#### **2.3.6 Time of serving meal.**

The hot cooked Mid-Day Meal is provided among the children preferably in between 12.00 noon to 12.30 p.m. in school working days.

### **2.4 Fund Flow Mechanism - System for release of funds (Central share and State share).**

#### **2.4.1 Existing mechanism for release of funds up to school/ implementing agency levels.**

- Cooking cost has been released to the SMC's bank accounts directly through RTGS from State Nodal Office.
- Monthly honourarium of Cook cum Helpers has been released directly to their individual bank accounts through RTGS from State Nodal Office.
- Fund for hand washing soap and detergent powder has been released directly to the SMC's bank accounts through RTGS from State Nodal Office.
- Fund for cost of food grains (rice) and transportation cost has been released directly to the bank accounts of District Nodal Office (DNO), MDM through RTGS from State Nodal Office. District Nodal Office has been released the fund for cost of food grains (rice) and transportation cost to the FCI authority & GPSS through RTGS.
- Fund for kitchen devices has been released to the SMC's bank accounts directly through RTGS from State Nodal Office.
- Fund for construction of kitchen cum stores has been released directly to the SMC's bank accounts through RTGS from State Nodal Office.
- Fund for office contingency has been released directly to the bank accounts of District Nodal Office (DNO) and Assistant District Nodal Office (ADNO), MDMS through RTGS from State Nodal Office.

#### **2.4.2 Mode of release of funds at different levels.**

All funds like Cooking Cost, Honourarium to Cook cum Helpers, Cost of food grains, Transportation cost, Hand washing soap and detergent powder, fund for MME has been released to the concerned levels through RTGS/NEFT mode from State Nodal Office.

**2.4.3 Dates when the fund were released to State Authority / Directorate / District / Block / Gram Panchayat and finally to the Cooking Agency / School.**

Levels	Date of release
Adhoc grants from State Government to Implementing Agency.	07/06/2018
Balance of 1 <sup>st</sup> instalment from State Government to Implementing Agency.	05/10/2018
Balance of 2 <sup>nd</sup> instalment from State Government to Implementing Agency.	21/02/2019
Implementing Agency to District for Cost of Food grains & Transportation Cost.	14/09/2018; 14/01/2019; 28/03/2019; 20/04/2019
Implementing Agency to SMCs bank accounts for cooking cost.	27/06/2018; 06/10/2018; 02/03/2019
Implementing Agency to personal bank accounts of Cook-cum-Helper for honorarium.	24/05/2018; 13/06/2018; 02/07/2018; 13/09/2018; 05/10/2018; 22/11/2018; 29/12/2018; 21/02/2019; 08/03/2019; 30/03/2019
Implementing agency to Cooking Agency for cooking cost and honourarium to Cook cum Helpers.	27/06/2018; 06/10/2018; 18/12/2018; 27/03/2019

**2.4.4 Reasons for delay in release of funds at different levels.**

Delay in release of fund under Adhoc grant and balance of 1<sup>st</sup> installment are mainly due to delay caused at Finance Department, Govt. of Assam for maintaining financial procedure etc. The SNO, MDM office released the fund immediately as soon as received the fund from the State Govt.

**2.4.5 In case of delay in release of funds from State/ Districts, how the scheme has been implemented by schools/ implementing agencies.**

The scheme has been implemented uninterrupted and smoothly by concerned School Managing Committees with active support of the community.

**2.4.6 Initiatives taken by the State for pre-positioning of funds with the implementing agencies in the beginning of the year.**

Government of Assam has approved "Green Channel Scheme" for release of fund for cooking cost and honorarium to Cook cum Helpers in the beginning of the year as advance for smooth and uninterrupted implementation of the scheme.

**2.5 Food grains Management.**

**2.5.1 Time lines for lifting of food grains from FCI Depot- District-wise lifting calendar of food grains.**

The State Nodal Office, MDM issues allocation of rice on quarterly basis to the DNOs, MDM and subsequently, DNOs, MDM have also sub allocated the rice to the GPSS. The DNO, MDM & GPSS have been asked to lift the rice on monthly/bi-monthly/quarterly basis as per their convenience.

### **2.5.2 System for ensuring lifting of FAQ food grains (Joint inspections at the time of lifting etc.).**

To ensure lifting of FAQ food grains on time, the State Govt. had constituted a Joint Inspection Team at district level with the following members vide Govt. letter No. PMA/MDM-Cell.72/2011/Pt./39 dated 24<sup>th</sup> February, 2015

- (i) Representative from District Administration,
- (ii) Representative from Food & Civil Supply Department,
- (iii) One of the Officials of district MDM Cell,
- (iv) Representative from FCI.

### **2.5.3 Is there any incident when FAQ food grain was not provided by FCI. If so, the action taken .by the State/District to get such food grain replaced with FAQ food grain. How the food grain of FAQ was provided to implementing agencies till replacement of inferior quality of food grain from FCI was arranged.**

FCI delivered Fair Average Quality (FAQ) rice in Mid-Day Meal Scheme. There is no instance recorded or no report is received by State Nodal Office, MDM till date.

### **2.5.4 System for transportation and distribution of food grains.**

In Assam, Food & Civil Supply Department is the State Nodal Agency for transportation of food grains (rice). The Gaon Panchayat Samabai Samity (Lamps in case of Karbi Anglong & Dima Hasao districts) under Food & Civil Supply Department lifts the food grains from FCI godown to GPSS/Lamps store. The FPS of GPSS/Lamps delivers the rice at school campus from GPSS godown.

### **2.5.5 Whether unspent balance of food grains with the schools is adjusted from the allocation of the respective implementing agencies (Schools /SHGs / Centralised Kitchens). Number of implementing agencies receiving food grains at door step level.**

Steps have been taken to adjust the balance of food grains (rice) at school level from next allocation in the following month. In this regard, instruction has been issued to the district authorities to ensure proper utilization of food grains (rice) as per the requirement of schools.

### **2.5.6 Storage facility at different levels in the State/District/Blocks/Implementing agencies after lifting of food grains from FCI depot.**

Lifted rice is stored at Kitchen-cum-Store room of the school in most cases. In order to prevent damage to food items from insects, animals etc., a total of **58,449** steel containers (storage bin) were provided to schools with a capacity of 50 kg. (19,126 during 2013-14 & 2014-15, 37,216 during 2017-18 and 2,107 during 2018-19) from MME head for safe storage of rice and other ingredients at school level.

### **2.5.7 System of fortification of food grains and their costing and logistics arrangement.**

Food grains (rice) can be fortified by adding a micronutrient powder to the rice that adheres to the grains or spraying of the surface of ordinary rice grains in several layers with a vitamin and mineral mix to form a protective coating. Rice

can also be extruded and shaped into partially precooked grain-like structures resembling rice grains, which can then be blended with natural polished rice. Rice kernels can be fortified with several micronutrients, such as iron, folic acid and other B-complex vitamins, vitamin A and zinc.

However, a separate budget provision will be required for fortification of food grains (rice) and logistic arrangement. In this regard, line department may be involved for this purpose.

#### **2.5.8 Challenges faced and plan to overcome them.**

It is observed that payment to FCI against cost of food grains from districts takes time. In this regard, State has decided to make payment from State Nodal Office directly through e-transfer subject to certification of the bills by the DNOs with respect to lifting status. Accordingly, Stat Govt. has issued a notification in this regard. However, F.C.I. authority denied receiving payment of cost of food grains from State level and they preferred to receive the payment only from district offices i.e. DNOs as per GOI's guidelines.

Safe storage of food grains in schools of reverine areas is found to be a difficult task mainly in rainy season. In this regard, State had already provided 58,449 Storage Bin to schools for safe storage of rice and other ingredients at school level.

### **2.6 Payment of cost of food grains to FCI.**

#### **2.6.1 System for payment of cost of food grains to FCI; whether payments made at district level or State level.**

Presently, payment of cost of food grains to FCI is made through the concerned DNOs. In this regard, State releases fund to DNOs subject to the lifting status submitted by FCI to the State Nodal Office and accordingly, DNOs make payment as per the bills raised by FCI subject to verification of the bills by Officials of Food and Civil Supply Department.

#### **2.6.2 Status of pending bills of FCI of the previous year(s) and the reasons for pendency.**

All pending bills of FCI up to 2017-18 have been cleared. It is to be mentioned here that the State Nodal Office, MDM Scheme, Assam is being released fund for cost of food grains to different districts as per rice lifting figures submitted by FCI, Regional Office, Paltanbazar, Guwahati. However, after reconciliation with the lifting figures submitted by FCI, Regional Office, Paltanbazar, Guwahati, it is noticed that some discrepancies are arise in between the rice lifting figures submitted by district authority and FCI authority.

#### **2.6.3 Timelines for liquidating the pending bills of previous year(s).**

There is no balance payment of FCI bills for cost of food grains up to the financial year 2017-18.

#### **2.6.4 Whether meetings are held regularly in the last week of the month by the District Nodal Officers with FCI as per guidelines dated**

**10.02.2010 to resolve the issues relating to lifting, quality of food grains and payment of bills.**

The FCI officials of Regional Office are regularly contacted from State as well as District Offices regarding lifting of rice, bills raised by FCI, payment made to FCI etc. Meeting has been conducted with FCI officials from time to time by district authority to resolve the pending issues at field levels.

**2.6.5 Whether the District Nodal Officers are submitting the report of such meeting to State Head quarter by 7<sup>th</sup> of next month.**

Minutes of the meeting has been submitted to the SNO, MDMS from time to time.

**2.6.6 The process of reconciliation of payment with the concerned offices of FCI.**

The State Nodal Officer, MDM releases the cost of food grains to DNOs, MDM of concerned districts as per lifting status submitted by FCI to SNO, MDM. The Area Manager, FCI submits the bills to the Deputy Commissioner & DNO, MDM /Principal Secretary & DNO, MDM in case of Autonomous Council districts. The DNO, MDM has to make payment to FCI as per bills & lifting certificate submitted by FCI to DNO, MDM.

In fact, reconciliation of payment is made as per the report received from DNOs and the FCI's statement collected in each month.

**2.6.7 Relevant issues regarding payment to FCI.**

As reported by District Nodal Offices, FCI fails to raise bills in time which delays the process of release of fund to FCI. Anomalies are also observed in the statement submitted by FCI regarding outstanding payment against lifting position. As per State Govt. commitment given in the PAB meeting for approval of AWP&B, 2015-16 for centrally payment of cost of food grains to FCI, the State Govt. had issued Notification for payment of cost of food grains from SNO, MDM directly through e-transfer, but the FCI authority has denied to received the payment of cost of food grains from SNO, MDM and they preferred to receive the payment of cost of food grains from districts.

**2.6.8 Whether there is any delay in payment of cost of food grains to FCI. If so, the steps taken to overcome the delay.**

District Nodal Officers has been trying to clear the all FCI bills as soon as the FCI authority submitted the bills to the DNOs. However, it has been reported that in some cases, FCI authority has not submitted bills in correct form to the DNOs due to which some delay for payment is occurred.

## 2.7 Cook-cum-helpers

### 2.7.1 Whether the State follows the norms prescribed by MHRD for the engagement of cook-cum-helpers or it has its own norms.

The State has followed the norms/guidelines prescribed by MHRD, Govt. of India for engaging Cook-cum-Helpers. Cook-cum-Helpers are engaged by School Management Committee locally, preferably women of disadvantage communities. The engagement of cook cum helper has been approved in SMC meeting.

### 2.7.2 In case, the State follows different norms, the details of norms followed may be indicated.

Does not arise.

### 2.7.3 Is there any difference in the number of cook-cum-helpers eligible for engagement as per norms and the CCH actually engaged.

The Cook cum Helpers have been engaged as per MHRD's norms and guideline.

#### Eligibility norms:

<u>Enrolment</u>	<u>Number of cook-cum-helper entitled</u>
Up-to 25	1
Up-to 100	2
Up-to 200	3
Up-to 300	4
Up-to 400	5

Cook-cum-Helpers are engaged by School Management Committee locally, preferably women of disadvantage communities. The engagement of cook cum helper has been approved in SMC meeting.

### 2.7.4 System and mode of payment, of honorarium to cook-cum-helpers and implementing agencies viz. NGOs / SHGs / Trust / Centralized kitchens etc.

Cook-cum-Helpers are engaged by School Management Committee locally, preferably women of disadvantage communities. The engagement of Cook cum Helper has been approved in SMC meeting. The monthly honourarium to Cook cum Helpers have been released to their personal bank account through RTGS/NEFT mode w.e.f. April, 2016. The monthly honourarium to Cook cum Helpers engaged by Akshaya Patra Foudation in Centralized Kitchen & schools has also been released through RTGS.

### 2.7.5 Whether the CCH were paid on monthly basis.

Yes. The monthly honourarium to Cook cum Helpers has been paid to their individual bank accounts through RTGS from State Nodal Office w.e.f. April, 2016.

**2.7.6 Whether there was any instance regarding irregular payment of honorarium to cook-cum-helpers and reason thereof. Measures taken to rectify the problem.**

Cook cum Helpers has been receiving their monthly honourarium through their individual bank accounts in time.

**2.7.7 Rate of honorarium to cook-cum-helpers.**

The rate of honorarium to cook-cum-helper is Rs.1000/- per month for 10 months in a financial year (excluding June & December) for which Rs.900/- is Central Share and Rs.100/- is State Share [90:10 ratio].

**2.7.8 Number of cook-cum-helpers having bank accounts.**

Total 1,18,998 Cook cum Helpers having bank accounts.

**2.7.9 Number of cook-cum-helpers receiving honorarium through their bank accounts.**

From April, 2016, all Cook cum Helpers have been receiving their monthly honourarium in their personal bank accounts through RTGS mode.

**2.7.10 Provisions for health check-ups of Cook-cum-Helpers.**

Under Rastriya Bal Swasthya Karyakram (School Health Programme) is being implemented in schools where the Cook-cum-Helpers has also been brought under the purview of these programme.

**2.7.11 Whether cook-cum-helpers are wearing head gears and gloves at the time of cooking of meals.**

Aprons and head gears have already been provided to all cook-cum-helpers during 2014-15 & 2018-19, which are used by the Cook-cum-Helpers during the time of cooking and serving of MDM.

**2.7.12 Modalities for apportionment of cook-cum-helpers engaged at school level and working at centralized kitchens, in case of schools being served through centralized kitchens.**

The Cook-Cum-Helpers (CCH) engaged by concerned SMCs in schools other than Centralized Kitchen. The CCH is being received of Rs.1000/- per month for 10 months in a financial year. In case of schools under centralized Kitchen, the CCHs receive of fifty percent of total due i.e. Rs.500/- per month for 10 months in a financial year considering their workload and the rest fifty percent of total amount is being paid to the Cook-Cum-Helpers engaged in Centralized Kitchen. It is to be mentioned that cook cum helpers engaged in the schools covered by NGO have only distributed the cooked food only.

Further, it may be stated that regarding discontinuation/release of Cook cum Helpers by School Managing Committees without any valid reason, the matter was discussed with Hon'ble Minister, Education, Assam on 11<sup>th</sup> August, 2016. The Hon'ble Minister, Education, Assam suggested that without prior approval of the appropriate authority and without any valid reason, no SMC can discontinue/release any Cook-cum-Helper from the cooking work under MDMS. Report of discontinuation/release as well as engagement of new Cook-cum-Helper is to be immediately intimated to the State Nodal Office with details of bank account etc. along with reason of discontinuance/release of Cook cum Helpers. A copy of the minutes is enclosed herewith for your kind reference.



Accordingly, a letter was issued to all District Nodal Officers, MDMS and informed that henceforth, the SMCs will not directly discontinue/release the Cook cum Helpers from the cooking works of MDMS. If, any situation for discontinuation of Cook-cum-Helper from the cooking work of MDM arises, the SMC will have to discuss the matter in the meeting of SMC and send a proposal/resolution along with reasons in writing to the Deputy Commissioner & District Nodal Officer, MDMS/Principal Secretary & District Nodal Officer, MDMS of the concerned district through Block Mission Co-ordinator, SSA & Block Nodal Officer, MDMS/ Deputy Inspector of Schools/ District Mission Co-ordinator, SSA & Assistant District Nodal Officer, MDMS for necessary approval. Without prior approval of the appropriate authority, no SMC can discontinue/release any Cook-cum-Helper from the cooking work of MDM.

**2.7.13 Mechanisms adopted for the training of cook cum helpers. Total number of trained cook cum helpers engaged in the cooking of MDMs. Details of the training modules; Number of Master Trainers available in the State; Number of trainings organized by the Master Trainers for training cook-cum-helpers.**

A total of 39,874 Cook-cum-helpers will be imparted training with the help of Master Trainers during 2018-19 on food safety & hygiene at school level kitchen, MDM Rules, 2015, best practices, nutrition value, quality control, menu chart etc. So, it is proposed to be covered 39,874 CCHs. Details is given below:

- Total Master Trainer = 120 + 30 + 60 = 210
- Trained up to CCH up to 2017-18= 56,985 (included Master Trainers).
- Trained up to CCH up to 2017-18 = 62,013

**Details of Training Module:**

**Day-1:**

- a) Hygiene:
1. Personal Hygiene – Definition & its importance
  2. Food Hygiene – i) Rules for food handler, Food storage
  3. Work Hygiene – i) Upkeep & care while working, ii) Keeping surrounding neat & clean
- b) Menu Planning : i) Definition, ii) Types of menu, iii) Factors of effective menu,  
iv) Cyclic menu, v) Pricing of a dish, vi) Meal timing

**Day -2**

- c) Nutrition: :i) Definition, ii) Types of nutrition, iii) Food & Nutrients, iv) Balance Diet
- d) Method of cooking: i) Objective of cooking, ii) Cooking method –  
a) with medium – like frying, roasting, cooking, etc,  
b) without medium – broiling, baking etc

**Day -3**

- a) Regional Cuisine: i) Koldil mangho, ii) Boror tenga,  
iii) Dhekia hakar bhaji, iv) Mandhania chutney

#### Day -4

- a) Regional Cuisine: i) Khischiri – 3 varieties, ii) Tomato Chutney, iii) Baby Potato fry, iv) Calcasia leaf curry & chutney, v) Kheer – 3 varieties (rice, potato, rice-flour)

#### Day -5

- a) Basic gravies: i) Red-fish curry, Egg curry, ii) White – Veg. khorma, iii) Green – Palak Paneer, Potato, iv) Soyabean curry, Rajma curry

#### Training Schedule :

- **Total Participants : 39,874**
- **Methodology, Time line and Training Module :**
  - (a) Training will be done in Cascade mode. A group of 210 Master trainers amongst the CCHs of all districts will impart the training to the CCHs.
  - (b) Training of CCHs will be organized at respective cluster. It will be a day long non-residential training, to be given by the Master Trainers. The training will be completed during 2018-19.
  - (c) Training module which is developed for training cook-cum-helper during 2014-15 will be revised as per findings of the training and would be use as training module for 2018-19.

#### **2.7.14 Whether any steps have been taken to enroll cook-cum-helpers under any social security schemes i.e Pradhan Mantri Jan Dhan Yojana, Pradhan Mantri Suraksha Bima Yojana, Pradhan Mantri Jeevan Jyoti Bima Yojana etc. and number of cooks benefitted through the same.**

The matter has already been brought to the notice of Education (Elementary) Department, Govt. of Assam. Subsequently, a letter No. GLR(RC)3/2003/Pt.I/320 dtd. 27/02/2019 has been received from the Addl. Chief Secretary to the Govt. of Assam, Labour Welfare Department and directed State Nodal Officer, MDM Scheme, Assam to registration and enrolment of CCHs working under Mid Day Meal Scheme for implementation of Pradhan Mantri Shram Jogi Mandhan Pension Yojana. Accordingly, all districts were directed to registration and enrolment of CCHs working under Mid Day Meal Scheme for implementation of Pradhan Mantri Shram Jogi Mandhan Pension Yojana vide letter No.SSA/MDM/Pochan Abhiyan/21/2018/7605 dtd. 08/04/2019.

#### **2.8 Procurement and storage of cooking ingredients and condiments.**

##### **2.8.1 System for procuring good quality pulses, vegetables including leafy ones, salt, condiments, oil etc. and other commodities.**

The SMC of the schools procure the ingredients locally so that season wise available fresh vegetables including green leafy ones can be provided with the meals. Pulses, salt, condiments etc. are being purchased in local market.

##### **2.8.2 Whether pulses are being procured from NAFED or otherwise.**

No. Pulses, salt, condiments etc. are being purchased by SMC in local market.

**2.8.3 Whether 'First-in : First-out' (FIFO) method has been adopted for using MDM ingredients such as pulses, oil/fats. Condiments salt etc. or not.**

First In First Out (FIFO) method has been adopted in usages of pulses, vegetables and condiments in the State.

**2.8.4 Arrangements for safe storage of ingredients and condiments in kitchens.**

Ingredients have been safely stored in kitchen-cum-store. A total of **58,449** Storage Bin (Steel Container) have been provided to schools for storage of rice and ingredients & condiments safely in kitchen.

**2.8.5 Steps taken to ensure implementation of guidelines dated 13.02.2015 on food safety and hygiene in school level kitchens under Mid-Day Meal Scheme.**

Guidelines on food safety and hygiene for school level kitchens under MDM Scheme have been translated into **Assamese, Bengali and Bodo languages** and distributed to the schools.

MDM Rules, 2015 have also been translated into Assamese, Bengali and Bodo languages and printed in the said booklet. Also the Rules have been printed in MDM Calendar, 2018 and provided to all schools.

Training has been imparted to Cook cum Helpers, President & Member Secretary and other members of the SMCs on food safety and hygiene for school level kitchens, MDM Rules, 2015 and Tithi Bhojan.

**2.8.6 Information regarding dissemination of the guidelines up-to school level.**

All guidelines/ booklets/ leaflets etc. provided by Central Govt. as well as State Govt. have been circulated amongst the schools via DNOs & BNOs.

**2.9 Type of Fuel used for cooking of Mid-Day Meals –LPG, Smokeless Chulha, Fire wood etc.**

**2.9.1 Number of schools using LPG for cooking MDM.**

At present, a total of 13,474 schools have been using LPG for cooking MDM at school level.

**2.9.2 Steps taken by State to provide LPG as fuel in MDM in all schools.**

State Govt. has requested to provide LPG connection to remaining schools through convergence with line department. In this regard, letter has already been communicated to the State Govt.

**2.9.3 Expected date by which LPG would be provided in all schools.**

State Govt. will be requested to provide LPG connection at the earliest.

**2.10 Kitchen-cum-stores.**

**2.10.1 Procedure for construction of kitchen-cum-store.**

The construction of kitchen cum stores is being constructed by School Managing Committee (SMC) under the constant supervision of District Project Engineer and block level Junior Engineers of SSA. The funds have been released

to the SMCs bank accounts in two installments. The 75% of the total unit cost has been released to the SMCs bank accounts from State Nodal Office through RTGS mode as 1<sup>st</sup> installment. The 2<sup>nd</sup> installment i.e. 25% of the total unit cost has been released to the SMCs bank accounts from State Nodal Office through RTGS mode after receiving UCs and photographs.

**2.10.2 Whether any standardized model of kitchen cum stores is used for construction.**

Construction of Kitchen-cum-store was done as per approved plan & estimate. The plan & estimate was prepared by construction agencies viz. HOUSEFED and Assam State Housing Board and the same was approved by State Nodal Officer, MDMS. Besides, Pre Feb (PEB) model/structure has been introduced for construction of Kitchen-cum-store to 12,222 schools, out of which 11,695 units have already been completed and 527 is under progress.

**2.10.3 Details of the construction agency and role of community in this work.**

The State Government had engaged two construction agencies namely, HOUSEFED and Assam State Housing Board for construction of Kitchen-cum-Stores under MDM programme. Accordingly, SNO, MDM had placed work order for construction of Kitchen-cum-Store one each in 44,615 schools. But, they had completed only 39,451. In fact, construction was done in close co-ordination between agencies and the SMCs concerned.

Further, Govt. had decided to construct remaining Kitchen-cum-Stores through SMCs. Accordingly, fund has released to the SMCs bank accounts (12,103 schools @unit cost of Rs.1,41,500/- and 119 schools @ unit cost of Rs.1,98,100/-). Remaining 5,122 schools @ unit cost of Rs.60,000/- have not been taken up yet due to insufficient unit cost. SMC of the concerned schools has monitoring the construction works and its progress & completion in time. The District Project Engineer and block level Junior Engineers of SSA has been constant supervised the construction works.

**2.10.4 Kitchen cum stores constructed through convergence, if any.**

Kitchen-Cum-Store of 39,451 schools has been done through two State Government agencies viz. HOUSEFED & Assam State Housing Board.

**2.10.5 Progress of construction of kitchen-cum-stores and target for the next year.**

PAB-MDM Sanction kitchen cum store	Completed by Assam State Housing Board and Housefed	Completed by SMCs	Total completed	In progress at SMC level	Yet to start	Target for 2019-20
A	B	C	D=[B+C]	E	F	G
56,795	39,451	11,695	51,146	527	5,122	Nil

**2.10.6 The reasons for slow pace of construction of kitchen cum stores, if applicable.**

In many cases, schools do not have sufficient land for construction of Kitchen-cum-store. In some cases, low-lying land and poor road communication are the reasons for slow pace in construction of Kitchen-cum-store.

In some areas like riverine areas/hill areas, non available of road connectivity is the main barrier in progress of works. Manpower is used for carrying materials to the construction site. For this reason cost of carrying materials goes higher than other areas.

During monsoon period every year a large area / some areas are affected with flood water & road communication is disrupted for a considerable period of time. Consequently, progress of works suffered in the above areas during the period & completion time requires more. Dispute in SMCs is also a major hindrance for progress of work. Progress is also affected due to frequent bandh call by various organizations, conflict in border and vulnerable areas etc.

Total 5,122 units @ Rs.60,000/- sanctioned during 2008-09 are found to be difficult to construct with the approved rate as per present SOR of PWD (B), Assam.

**2.10.7 How much interest has been earned on the unutilized central assistance lying in the bank account of the State/implementing agencies.**

Rs.21.51 crore was lying in the bank as interest.

**2.10.8 Details of the kitchen cum stores constructed in convergence. Details of the agency engaged for the construction of these kitchen cum stores.**

A total of 39,451 units of kitchen cum stores have been constructed by Assam State Housing Board and Housefed.

**2.11 Kitchen Devices**

**2.11.1 Procedure of procurement of kitchen devices from funds released under the Mid-Day Meal Programme.**

The Govt. of India had released of Rs.663.85 lakh and Rs.1566.20 lakh during 2009-10 & 2010-11 for procurement of kitchen devices. The Director of Elementary Education cum the then SNO, MDMS Assam had invited tenders for purchase of steel plate and steel Glass during 2013. However, order of the work could not be executed due to pending court cases. The court has disposed off the matter and now, fund has been released to the SMCs of 44,601 schools in their bank accounts as per rate (Rs.5000/- per school) to procure kitchen devices as per the guideline and specifications approved by Govt. of Assam.

**2.11.2 Status of procurement of kitchen devices.**

State Government had released an amount of Rs.883.30 lakh during 2007-08 for procurement of Kitchen devices, which has already been utilized. In fact, no fund has been received from other sources for procurement of Kitchen devices in schools. However, Govt. of India has released an amount to Rs.569.70 lakh during 2016-17 for replacement of kitchen devices to 11,394 schools. Accordingly, all targeted schools have been provided LPG connection along with Gas Stove and Suraksha Rubber Hose with the help of IOC Ltd., Guwahati.

**2.11.3 Procurement of kitchen devices through convergence or community/CSR.**

No kitchen devices have been procured through convergence or community/CSR.

#### **2.11.4 Availability of eating plates in the schools. Source of procurement of eating plates.**

The SNO, MDM has not provided fund for purchasing of eating plates. However, a good number of SMCs have purchased eating plates from their own resources. During 2019-20, it is proposed to provide eating plates and drinking water glass (steel) to the students in phased manner from MME component.

### **2.12 Measures taken to rectify:**

#### **2.12.1 Inter-district low and uneven utilization of food grains and cooking cost.**

Status of utilization of food grains and cooking costs are regularly monitored from district as well as State levels. Schools are encouraged to utilize food grains at the optimal quantity, so that no uneven utilization of food grains and cooking cost is seen.

#### **2.12.2 Intra-district mismatch in utilization of food grains and cooking cost.**

Intra district uneven/mismatch of utilization of food grains and cooking cost are observed due to several reasons like local bandh, flood, ethnic violence etc. The District Nodal Officers have been asked to utilize cooking cost in proportionate of food grains and the schools are requested to make up the left out days taking special measures.

#### **2.12.3 Mismatch of data reported through various sources (QPR, AWP&B, MIS etc)**

It has been observed that lot of errors remain while entering the data into MIS portal by computer operators. Checking at the entry level has considerably reduced such error in the current year data. Of course, few mismatches are still observed which need to be taken care of in future while entering the data in MIS web portal.

### **2.13 Quality of food:**

#### **2.13.1 System of Tasting of food by teachers/community. Maintenance of tasting register at school level.**

Cooked food is tasted by teachers / cook-cum-helper / SMC members on regular basis. The Schools authority has also been requested to maintain tasting register at school level.

#### **2.13.2 Maintenance of roster of parents, community for the presence of at least two parents in the school on each day at the time of serving and tasting of mid day meal.**

Cooked food is tasted by teachers / cook-cum-helper(s) / SMC members / parents / community on regular basis and maintained testing register at school level.

#### **2.13.3 Testing of food sample by any recognized labs for prescribed nutrients and presence of contaminants such as microbe's e-coli. Mechanism to check the temperature of the cooked MDM.**

Meal provided by Akshaya Pattra Foundation is tested in reputed laboratory. State will also take necessary steps to test cooked MDM in reputed laboratory to ascertain the quality of food.

#### **2.13.4 Engagement of / recognized labs for the testing of Meals.**

The Akshaya Pattra Foundation, Guwahati (NGO) has an ISO certified kitchen and dispatch Meals for testing purpose at NABL Lab, Kolkata & Public Health Lab, Assam at regular interval.

#### **2.13.5 Details of protocol for testing of Meals, frequency of lifting and testing of samples.**

Cooked food is tasted by teachers / cook-cum-helper / SMC members on regular basis. The Schools authority has maintained tasting register at school level.

The Akshaya Pattra Foundation, Guwahati (NGO), being an ISO certified kitchen, follows all the safety & quality measures and norms. At a regular interval, Food Inspector from Office of Joint Director of Health services visits the kitchen. After cooking, food is being tested by three senior category officers including Quality Officer of the foundation. The Foundation sends Meals for testing purpose at NABL Lab, Kolkata & Public Health Lab, Assam at regular interval.

#### **2.13.6 Details of samples taken for testing and the results thereof.**

Cooked food is tasted by teachers / cook-cum-helper / SMC members on regular basis. The Schools authority has maintained tasting register at school level.

State will also take necessary steps to test cooked MDM in reputed laboratory to ascertain the quality of food.

#### **2.13.7 Steps taken to ensure implementation of guidelines issued with regard to quality of food.**

A necessary guideline has been issued to all concerned including school authority to ensure implementation of guidelines with regard to maintain quality of food. State will also take necessary steps to test cooked MDM in reputed laboratory to ascertain the quality of food.

Further, guidelines on food safety and hygiene for school level kitchens under MDM Scheme have been translated into Assamese, Bengali and Bodo languages and distributed to the schools. MDM Rules, 2015 (Notification) have also been translated into Assamese, Bengali and Bodo languages and printed in the said booklet. The MDM Rules, 2015 have also been printed in MDM Calendar, 2018. Training have been imparted to Cook cum Helpers, President, Member Secretary and other members of the SMCs on food safety and hygiene for school level kitchens and MDM Rules, 2015.

## 2.14 Involvement of NGOs / Trusts.

### 2.14.1 Modalities for engagement of NGOs/ Trusts for serving of MDM through centralized kitchen.

The Akshaya Patra Foundation, a public charitable trust having its Head Office at Bangalore has been engaged in providing Mid-Day Meal in Kamrup (Rural) and Kamrup (Metro) since February, 2010. Currently, it is providing Mid-Day Meal to 566 schools (Kamrup– 406 and Kamrup (Metro)- 160) to 40,770 children (Kamrup– 22,299 and Kamrup (Metro)- 18,471) through its state of art ISO certified kitchen situated at Amingaon.

Mid-Day-Meal Guideline, 2006 and Mid-Day-Meal Rules, 2015 provides for setting up of **Centralised Kitchen** for a cluster of schools in urban areas where there is a space constraint for construction of kitchens in individual school. The Mid-Day-Meal (Amendment) Rules, 2017 amending the sub-rule (2) of rule 5 of the Mid Day Meal Rules, 2015 has been notified vide G.S.R. 471 (E) dated 16<sup>th</sup> May, 2017 as below:

*“(2) Every school shall have the facility for cooking meal in hygienic manner and the schools in urban areas and in identified rural areas which have good road connectivity and viable cluster of schools, for the purpose of leveraging efficiency gains, may use the facility of centralized kitchens for cooking meals wherever required in accordance with the guidelines issued by the Central Government and the meal shall be served to children at respective school only.”*

Hon'ble Finance Minister, Govt. of Assam had announced in the Budget Speech during 2016-17 (54 & 55 pages) that “Mid-day-Meal is one of the most successful programme across the country. This has evidently helped not only the retention level of the students of schools but also increasing their nutrition status. But the challenge is to provide cooked, hygienic and healthy meal in every school remains a challenge. The successful experiment in providing cooked and hygienic meal in some Blocks in Kamrup district by involving "Akshay Patra", a reputed International NGO by centralized cooking at the Block level gives a positive outlook. The Education Department will come up with detailed guidelines for implementing mid-day meal scheme through centralized kitchens in a phased manner.”

Under such circumstances, an Expression of Interest (EOI) was floated for supply of Mid Day Meal in elementary schools in Assam through Centralised Kitchen in the month of June, 2017. A total of 20 (twenty) NGOs/VOs had submitted EOI for supply of MDM in elementary schools in Assam. EOI was evaluated on the basis criteria mentioned in the EOI.

A State level committee was constituted under the Chairmanship of the Commissioner & Secretary to the Govt. of Assam, Elementary Education Department for selection as well as for empanelment of NGOs/VOs.

The State Level Committee has decided to empanel 15 (fifteen) NGOs/VOs out of 20 NGOs/VOs for allotment of districts for setting up of Centralized Kitchen in the urban area preferably in the district head quarter. After completion of



infrastructural development in regard to Centralised Kitchen, the mid day meal will be provided through Centralised Kitchen.

**2.14.2 Whether NGOs/ Trusts are serving meal in rural areas.**

No. The Akshaya Patra Foundation, Guwahati (NGO) is serving meals in Kamrup (Rural) and Kamrup (M) districts in urban areas.

**2.14.3 Maximum distance and time taken for delivery of food from centralized kitchen to schools.**

The Akshaya Patra Foundation, Guwahati (NGO) is covering maximum 20 km distance from the centralized kitchen and its takes around 2 hrs from the kitchen to schools. It is ensures that it reaches before lunch time following ISO norms of cooked to consumption.

**2.14.4 Measures taken to ensure delivery of hot cooked meals to schools.**

The Akshaya Patra Foundation, Guwahati (NGO) is cooking meals in ISO certified kitchen strictly following ISO norms and pack food in SS 304 grade vessels and send through customize insulated Delivery van which keep food warm at consumption time.

**2.14.5 Responsibility of receiving cooked meals at the schools from the centralized kitchen.**

Cooked meals are received by Cook-Cum-helper & SMCs of the concerned schools from the Akshaya Patra Foundation, Guwahati (NGO) carried through customized insulated vehicles. The CCHs of the schools covered under NGO then distributed the meal among the children and washes utensils after delivery of food.

**2.14.6 Whether sealed/insulated containers are used for supply of meals to schools.**

Yes , the Akshaya Patra Foundation is providing meals through S.S. 304 grade Vessels which are completely air tight and food self-life inside the vessels is five hrs and temperature remains near about 60<sup>0</sup>c to 65<sup>0</sup>c at the time of consumption (lunch time).

**2.14.7 Tentative time of delivery of meals at schools from Centralized Kitchen.**

Generally, it takes two hours from centralized kitchen. Meals are served within 12 noon of all schools covered under centralized kitchen.

#### **2.14.8 Availability of weighing machines for weighing the cooked MDM at school level prepared at Centralized Kitchen.**

No weighing machine is available at school level. However, in centralized kitchen the same is available and is being using in regard to cooked MDM.

#### **2.14.9 Testing of food samples at centralized kitchens.**

The Akshaya Patra Foundation, Guwahati (NGO), being an ISO certified kitchen, follows all the safety & quality measures and norms. At a regular interval, Food Inspector from Office of Joint Director of Health services visits the kitchen. After cooking, food is being tested by three senior category officers including Quality Officer of the foundation. The Foundation sends Meals for testing purpose at NABL Lab accredited Lab & Public Health Lab, Assam at regular interval.

#### **2.14.10 Whether NGO is receiving grant from other organizations for the mid day meal. If so, the details thereof.**

Since, the Akshaya Patra Foundation, Guwahati (NGO) is cooking food following NV norms and all other parameter cost per meal is coming approx. Rs.8 per meal. The source of fund of organization is:

- 1) Grant: Grain & Cash subsidy from Govt.
- 2) Donation.

### **2.15 Systems to ensure transparency and accountability in all aspects of programme implementation:**

#### **2.15.1 Display of logo, entitlement of children and other information at a prominent visible place in school.**

MDM Logo has been displayed in the front veranda of the schools. The entitlement of children and other information have been printed in MDM calendar. The same have been displayed in hoarding also. Hoardings are installed in the office campus of Deputy Commissioners, Inspector of Schools, DEEOs, BEEOs. Further, State Govt. has decided to provide White Board during 2015-16 to all schools to reflect MDMs entitlement of children in respect of norms of cooking cost, rice, honorarium to cook cum helpers, stock of food grains, medical plan and other important information. During 2019-20, it is proposed to display MDM Logo in all schools by painting in front of the school building wall from MME component.

#### **2.15.2 Dissemination of information through MDM website.**

All the information in respect of Mid-Day Meal Scheme is uploaded in MDM website as per specific format. During 2018-19, a separate MDM Website has been created and all important information / guidelines etc. will be uploaded.

### **2.15.3 Provisions for community monitoring at school level i.e. Mother Roaster, Inspection register.**

All Schools have maintained Inspection Register to note down the observations/comments by the inspecting officials. Also, SMCs, Mother Groups regularly monitor the functioning of MDMS and provide concurrent support to the schools in this regard.

### **2.15.4 Tasting of meals by community members.**

SMC members, teachers, cook-cum-helpers, Mother Groups taste cook meal before 30 minutes ahead of distribution among the children and instructions have been issued for keeping the record of taster in a separate register and has been kept in schools.

### **2.15.5 Conducting Social Audit.**

State has been conducted Social Audit for SSA & MDMS with a view to ensure transparency, accountability & participation of community in school development activities. Social Audit manual was developed in the State with the inputs of Resource Person, Teachers, SMCs and provided to the selected SMCs for conducting Social Audit. Social Audit teams are constituted with the representative of PRIs, local Retired Teacher, NGOs, local educated Youth, Mothers Group and the Group Co-ordinators has been given training at district level. During the financial year 2018-19, a total of 47,818 schools have been covered under social audit in convergence with Samagra Shiksha. In 2019-20, a total of 49,290 Schools (Govt. & Local Body) is proposed to be covered under social audit in convergence with Samagra Shiksha also.

#### **2.15.5.1 Whether Social Audit has been carried out or not**

Social Audit has been carried out in all Govt./Provincialised schools.

#### **2.15.5.2 If no, in 2.15.5.1, reasons thereof**

Does not arise.

#### **2.15.5.3 Details of action taken by the State on the findings of Social Audit**

The district-wise report of Social Audit is being compiled at district level. After received of the report, the findings of the social audit will be shared with MHRD, Govt. of India.

#### **2.15.5.4 Impact of Social Audit in the schools.**

- To uphold transparency, accountability and participation of community in school development activities.
- Providing community an opportunity to the community to scrutinize school development.
- To encourage participation of stake-holders and sharing their values.

- To ensure that works are done as per norms and errors are rectified, if any.  
during implementation of the activity.
- To strengthen the community monitoring and thereby sustain the community ownership.
- To maintain a cordial relation between community and school.
- To ensure proper utilisation of resources.

#### **2.15.5.5 Action plan for Social Audit during 2019-20.**

During 2019-20, Social Audit will be carried out in all Govt./Provincialised schools across the State and proposed to be conducted during the period from November – December.

### **2.16 Capacity building and training for different stakeholders:**

#### **2.16.1 Details of the training programme conducted for State level officials, SMC members, school teachers and others stakeholders.**

During 2014-15, a 5-day training programme for cook-cum-helper was organized in 2 batches having 30 Cook-cum-Helpers in each batch in the Institute of Hotel Management, Guwahati. The training of 1<sup>st</sup> batch of Cook-cum-Helper was held on 3<sup>rd</sup> November, 2014 to 7<sup>th</sup> November, 2014 and training of 2<sup>nd</sup> batch of Cook-cum-Helper was held from 25<sup>th</sup> November, 2014 to 29<sup>th</sup> November, 2014. The expenditure of the training of Cook-cum-Helper was incurred from MME head. These 60 trained Cook-cum-Helpers along with previous year trained 150 Cook-cum-Helpers were the Master Trainers and imparted training to other Cook-cum-Helpers at cluster level.

In the training of SMCs under SSA, the Mid-Day-Meal has been taken a major subject of discussion with the SMC members. Apart from SMC's role and responsibilities in MDMS, the subjects like books of accounts, hygiene and safe drinking water, emergency plan, kitchen garden, Sampriti Bhojan, food safety & hygiene etc. were covered in the training module.

Role of SSA functionaries in MDMS is also discussed in different meetings held at State & District levels from time to time.

#### **2.16.2 Details about Modules used for training, Master Trainers, Venues etc.**

##### **Course Content for the Training Programme for MDMS cook:**

##### **Day-1:**

##### **[a] Hygiene:**

Personal Hygiene – Definition & its importance

Food Hygiene – i) Rules for food handler, Food storage

Work Hygiene – i) Upkeep & care while working, ii) Keeping surrounding neat & clean

[b] Menu Planning: i) Definition, ii) Types of menu, iii) Factors of effective menu, iv) Cyclic menu, v) Pricing of a dish, vi) Meal timing

### **Day -2**

[c] Nutrition: :i) Definition, ii) Types of nutrition, iii) Food & Nutrients, iv) Balance Diet

[d] Method of cooking: i) Objective of cooking, ii) Cooking method –  
c) with medium – like frying, roasting, cooking, etc,  
d) without medium – broiling, baking etc

### **Day -3**

[e] Regional Cuisine: i) Koldil mangho, ii) Boror tenga,  
iii) Dhekia hakar bhaji, iv) Mandhania chutney

### **Day -4**

[f] Regional Cuisine: i) Khischiri – 3 varieties, ii) Tomato Chutney,  
iii) Baby Potato fry, iv) Calcasia leaf curry & chutney, v) Kheer – 3 varieties (rice, potato, rice-flour)

### **Day -5**

[g] Basic gravies: i) Red-fish curry, Egg curry, ii) White – Veg khorma, iii) Green – Palak Paneer, Potato, iv) Soyabean curry, Rajma curry

#### **2.16.3 Targets for the next year.**

All CCHs have been provided training up to 2018-29. However, no training programme is proposed for CCHs during 2019-20.

#### **2.17 Management Information System at School, Block, District and State level and its details:**

##### **2.17.1 Procedure followed for data entry into MDM-MIS Web portal.**

At Block level MIS data entry has been made as per man-days basis under direct supervision of District MDM functionaries where block EDPs are not in a position. The data entry process was continuously supervised from State in Annual & Monthly data entry format along with all logistic helps to the field level offices. During current year, the Govt. of India has issued instruction to involve EDPs of SSA engaged in data entry into MIS Web Portal. Accordingly, necessary instruction has been issued to engage EPDs of Block offices in data entry works. On the other hand, man days basis EDP has been engaged through outsourcing for online data entry in MIS MDM Web Portal as and when necessary arises.

##### **2.17.2 Level (State/ District/ Block/ School) at which data entry is made.**

School wise format is collected by CRC/ Block EDP & Block Accountant (under SSA) / Sub-Inspector of School and data entry has been done at Block level mainly on man-days basis/ EDPs of Block Offices.

### **2.17.3 Availability of manpower for web based MIS.**

Initially, MIS data entries have been done by the block level SSA EDPs. Subsequently, for incomplete and due to urgency, data entry has been done on man-days basis through outsourcing.

### **2.17.4 Mechanism for ensuring timely data entry and quality of data.**

One of the mandatory tasks of district MDM functionaries is to ensure timely data entry into MIS MDM portal. District officials are to regularly follow up the collection of formats and entry of data into the web portal.

### **2.17.5 Whether MIS data is being used for monitoring purpose and details thereof.**

MIS data have been used for planning process for preparation of AWP&B, 2019-20 such as MME plan, Inspection of schools, unsubsidized LPG, Toilet & Drinking water facilities etc. It is also a part of the monitoring system to ensure quality food for eligible children as per the norms.

## **2.18 Automated Reporting & Monitoring System (ARMS) at School, Block, District and State level and its details:**

### **2.18.1 Status of implementation of ARMS.**

Automated Reporting & Monitoring System (MDM-ARMS) for collection of daily meal served data from schools for real time monitoring of MDMS has been rolled out in the State Assam in the month of October, 2017 and started pushing the daily & monthly data in the central server on regular basis. A total of 54,882 schools are ported in ARMS Web Porta. At present, the no. of schools that are reporting in ARMS is 13,803 (Daily) which is approx. 25.15% of total schools [as on 26.04.2019]. Similarly, the no. of schools that are reporting in ARMS is 6,850 (monthly) for the month of April, 2019, which is approx. 12.48% of total schools [as on 26.04.2019].

### **2.18.2 Mode of collection of data under AMS (SMS/IVRS/Mobile App/Web enabled).**

In ARMS, the registered Head Teachers / Assistant Teachers send a single SMS of total number of students served cooked Mid Day Meal to Toll Free Number 15544. The attendance data is also sent by Mobile App-with or with-out internet connectivity and through the website "mdmhp.nic.in" online.

### **2.18.3 Tentative unit cost for collection of data.**

A pre-receipted bill has been submitted by the NICSI as follows:

- For the period of 01.02.2018 to 01.06.2018 against 6508 units (1 unit = 1000 SMC). The bill amount is Rs.2,26,005/-.
- For the period of 01.12.2017 to 31.01.2018 against 522 units (1 unit = 1000 SMC). The bill amount is Rs.18,128/-.
- For the period of 02.06.2018 to 30.09.2018 against 533 units (1 unit = 1000 SMC). The bill amount is Rs.18,510/-.
- As per the bill, the cost of per SMS is fixed with Rs.0.029. The payment against the pre-receipted bills mentioned above have been made to NICSI, New Delhi through RTGS.

#### **2.18.4 Mechanism for ensuring timely submission of information by schools.**

The Daily data reporting time in ARMS in Assam is fixed from 10:10 to 5:00 PM and for non reporting of data of any school, the respondents will be alerted by sending 3 periodic group SMS as per their role/ hierarchy. Moreover, district-level, block-level and cluster-level stakeholders in the state are also instructed to make ensure of timely submission of daily data by schools.

#### **2.18.5 Whether the information under AMS is got validated.**

The daily data reported in ARMS by the respondents are successfully delivered into the central server and the respondents are getting the acknowledgement against the successful delivery of daily data in their registered mobile phone. However, few issues faced by the respondents regarding non-delivery of MDM data are directly pursued with the NIC-HP and accordingly issues are being solved.

#### **2.18.6 Whether AMS data is being used for monitoring purpose and details thereof.**

Yes. ARMS is being used for monitoring purpose of the schools those who have not served meal on a particular day. The present status of availability of fund and food grains for the non serving MDM schools are reflected in the ARMS web portal and accordingly the stakeholders at different levels are engaged for remedial measures.

#### **2.18.7 In case, AMS has not been rolled out, the reasons therefor may be indicated along with the time lines by which it would be rolled out.**

Does not arise.

### **2.19 Details of Evaluation studies conducted by State/UT and summary of its findings:**

The Planning & Development Department, Govt. of Assam has conducted a study on Flagship Scheme in Nalbari, Kamrup, Dibrugarh, Lakhimpur, Morigaon, Karbi Anglong, Hailakandi and Jorhat districts during 2013-14 and Evaluation studies were done in the

reference period 2009-10, 2010-11, 2011-12 and 2012-13, the major findings are listed below:

**Findings:**

1. SMCs of the schools appointed the staff (Cook/Helper) for preparation of Mid-Day Meal. Only 30% of the sample schools visited reportedly involved Senior Citizens in MDM programme
2. Operational difficulties have been experienced and reported by the school authorities in the implementation of Mid-Day Meal, right from procurement of various items along with their teaching activities.
3. Separate sheds/kitchens for preparation of Mid Day Meal are available in the 90% of the sample schools visited
4. It is observed that the number of students enrolled in the School Registers is less than the statistical data maintained by the MDM Programme in some of the sample schools.
5. The cooking cost is not provided regularly to the schools. There are instances that many schools are collecting food grains other than rice and firewood etc. on credit from the private stores. The honorarium of cooks was also not paid regularly.
6. Mid-Day Meal to children has not been served uniformly in all the schools in a week. Some schools served Mid-Day Meal five days in a week and other schools are found to have served Mid-Day Meal six days in a week. This is evident from the information gathered through schedules/questionnaire etc.
7. Poor maintenance of up to date record in the schools has been observed. This may be due to shortage of teacher/manpower in the school. Lower Primary school having a single teacher failed to run smoothly both Mid-Day Meal programme and SSA programme simultaneously.
8. Cook/helper have been found to be varied from 2 to 5 nos. in each sample schools and none of them reported about regular receipt of their dues of Rs.1000.00 pm.
9. All the sample schools have been provided the MDM at between 12.00 noon to 1.00pm as per norms in one time per day and all the students takes it satisfactorily.
10. Provision of water has been found either of hand Tube-well or Deep Tube well etc. for preparing of MDM and drinking purpose. Most of the children bring water bottle from their home. Safe drinking water seems to be available in most of the sample schools visited. 60% of the schools are having Hand pump & the rest 40% seems have Tube well.
11. All the students interviewed reported about taken their MDM at school regularly as per requirement every day and they uses steel dish for eating purpose at school.
12. Though some schools visited reported positive impact of MDM is School as improved attendance, impact on enrolment is again area specific and depends on the lifestyle of the population. In some areas people send their children to private schools. Thus overall no noticeable increase in enrolment is seen.
13. Quality of dry ration as reported by 80% of the sample schools visited is good and only 20% schools reported as fair.
14. In 50% of the sample schools menu reportedly prepared by the Head Master/ Teachers. In 20% schools menu is prepared by Higher Officials. In another 10% by MDM committees and in the rest 20% by the combination of all above
15. There is no proper & earmarked area for serving MDM to the children. 40% of the sample schools use class rooms, another 40% use veranda and the rest 20% use open space to take meal in schools
16. As regards monitoring of MDM scheme in schools, 60% of the sample schools visited reportedly have the system & the rest 40% do not have a proper monitoring system,



40% reportedly monitored implementation of MDM quarterly & rest 20% monthly.

17. As regards storage facilities available, 90% of the sample schools are having raised platform for storing the rice etc. lifted under the scheme. The rest of the 50% sample schools do not have such facilities & rice meant for MDM are stored on the pucca floor of the school room.
18. As regards level of satisfaction with MDM programme, 30% of the sample schools reported as fully satisfied, 50% as satisfied, 10% as OK and the rest 10% as not satisfied.
19. Rice, dal, sabji, khichdi, soyabean curry and in some cases local options are prepared alternately. On special days like meetings etc breads/biscuits bananas are also served. Weekly once protein supplement like egg etc are served.
20. During interaction with the students it was observed that students were satisfied with the quality of food served. 10% of them found to dislike the food.
21. Cleanliness is strictly maintained in regard to washing of utensils with detergents by the cook/helper. Separate dumping facility for kitchen/food wastes are there
22. Students wash their hands well before taking food. In most of the schools children of cook/helpers are the students of the same school hence the kitchen staff take good care of the students as well.
23. Cooks and helpers get their remuneration late i.e. after 5/6 months which is deposited to their respective bank accounts. But the delay in getting the salary causes some grievance among the cooks.

During 2018-19, Expression of Interest (EOI) under MDMS was floated for conducting Third Party Evaluation Study in seven (07) aspirational districts viz. Baksa, BARPETA, DARRANG, DHUBRI, GOALPARA, HAILAKANDI and UDALGURI covering 1160 schools (40 schools (Govt. & Provincialised) per block, total 29 blocks). Selection of the schools was proposed to be done to ensure proportionate representation of LP, UP, ME, MV, Composite High & Higher Secondary schools. Moreover, the selected school of each district is proposed to be from rural & urban areas, hard to reach areas (char/riverine/hilly/border) etc.

The study was proposed to be conducted with the following objectives:

1. To study the effectiveness of the service mechanism of the scheme.
2. To study the effect of the scheme on attendance and retention of children.
3. To identify the specific issues and challenges in effective implementation of the scheme.
4. To suggest viable & practical measures for better implementation.

Three (03) parties were submitted the EOI for conducting the evaluation study. After evaluation of the EOIs as per criteria fixed in the EOI, none of the party was qualified. However, the process is resumed to conduct Third Party Evaluation Study under MDMS during 2019-20.

## **2.20 Write up on best/ innovative practices followed in the State along with some high resolution photographs of these best / innovative practices:**

### **MDM IEC Calendar:**

State has provided MDM calendar to all schools and offices of Education Department and district administration with the information like suggested weekly menu, calorie chart, norms with respect to all components (Cooking cost, honorarium to Cook-cum-Helper, Transportation Cost, Days to be served MDM, food grains entitlement etc). The calendar also displays best initiatives in the State with photographs portraying children

of schools. The SSA-MDM Toll Free Number and address for communication to State MDM Offices have also been enlisted in the Calendar. It may be mentioned that guidelines of Tithi Bhojan provided by MHRD, Govt. of India has been translated into Assamese language and printed in MDM Calendar, 2019.

### **Group Hand-washing before Mid-Day-Meal:**

Assam model of Group Hand-washing before Mid-Day-Meal is one of the best model in the country with low cost high value principle, which is appreciated at the national/international level. As reported, this activity has enhanced enrolment and retention of children in schools vis-à-vis reduced the diseases like diarrhea, skin disease etc.

### **Kitchen Garden in Schools:**

Kitchen Garden is a source of fresh nutritious vegetables for school feeding. Children are encouraged to eat more vegetables if they participate in planting and harvesting of garden produce. Kitchen garden is an effective learning venue for students to increase their knowledge and learn more about gardening practices they can do in their own backyards. School children also learn to appreciate conservation of nature as well as the importance of vegetables for health and wellness.

- Establish the green atmosphere in the school surrounding.
- Students get benefit of school vegetable garden.
- Students get nutritious vegetables in MDM.
- Students get knowledge of work.
- Knowledge of horticulture and agriculture growth can be developed.
- Awareness about environmental education.
- Information of vegetables and its uses.
- Increase involvement of students, teachers and community.
- Upholds dignity of labour.
- Instills love for nature.
- Promotes concept of greenery.
- Helps in developing a good hobby.
- Helps in beautifying the school.
- Encourage self sufficiency.

Under these circumstances, SMCs of the concerned schools/communities/teachers are requested to develop kitchen garden in their own school with the help of students. The result is so encouraging in almost all schools. The students are enjoying eating green vegetables from their own kitchen garden.

State has promoted Kitchen Garden in schools with the help School Managing Committees and the line department. Almost all schools have developed Kitchen Garden in their school campus. Leafy & green vegetable in kitchen garden is found to be a good source of nutrients for children in these schools.

*All the above three activities were highly appreciated by 21<sup>st</sup> JRM of SSA & 7<sup>th</sup> JRM of MDM visited the State during February, 2015.*

### **Honourarium to Cook cum Helpers through e-transfer:**

Prior to April, 2016, the monthly honourarium of Cook cum Helpers had been released in the SMC's bank account from State Nodal Office, Guwahati. Accordingly, monthly honourarium of CCHs were paid by SMC's President and Member Secretary through cheque or cash. The process of disbursal of monthly honourarium took a reasonable period of time leading the Cook cum Helpers engaged by SMC in trouble for getting

their monthly honorarium in time. Sometime, report of siphoning of amounts sanctioned at different level had also been reported. The Cook cum Helpers Association had been demanding frequently to release their monthly honorarium through their individual bank account.

To make the system of disbursement of monthly honorarium more transparent and to plug the loopholes in respect of proper disbursement of monthly honorarium of Cook cum Helpers to their individual bank accounts directly it is decided to take help of platforms of different banks right from nationalized, regional rural banks and also private banks to transfer the fund through RTGS from State Nodal Office to avoid unnecessary delay in getting their monthly honourarium from SMCs.

Subsequently, all Cook cum Helpers were persuaded and motivated to open zero balance bank accounts with the help of bank branches available locally during 2015-16 and 2016-17. Accordingly, they opened bank accounts in different banks and provided to State Nodal Office through District Nodal Office. Details of bank accounts of CCH were given to Axis Bank, Bhangagarh branch, Guwahati for validation and necessary correction like IFS code etc. for initiating the exercise.

Subsequently, the monthly honourarium of Cook cum Helpers @Rs.1000/- have been released to their personal bank account through RTGS/NEFT mode w.e.f. April, 2016.

***Positive Impact:***

Adoption of this electronic transfer mode of fund has made the process of disbursement easy, transparent, well monitored and corruption free. CCHs are now more motivated in performing their assigned duties for feeding the children. This will be a positive step towards achieving the universal objective of women empowerment to embolden the society, as such.

The Mid-Day Meal scheme is being efficiently and properly implemented as per the guidelines and all the Cook-cum-Helpers are playing a very vital role in this regard.

**Display Board:**

Display board along with duster and markers has been provided to the schools for displaying day-to-day MDM records for transparency.

**Tarpaulin (sitting mat):**

Tarpaulin (sitting mat) has been provided to the schools for eating MDM in hygienic manner.

**Printing of "Guideline on Food Safety & Hygiene at School Level Kitchens":**

Guidelines on food safety and hygiene for school level kitchens under MDM Scheme have been translated into Assamese, Bengali and Bodo languages and distributed to the schools. MDM Rules, 2015 have also been translated into Assamese, Bengali and Bodo languages and printed in the said booklet. Training has been imparted to Cook cum Helpers, President & Member Secretary of the SMCs on food safety and hygiene for school level kitchens and MDM Rules, 2015.

**2.21 Untoward incidents**

**2.21.1 Instances of unhygienic food served, children falling ill.**

No instance of unhygienic food served & children falling ill are reported in the State.

**2.21.2 Sub-standard supplies.**

FCI delivered Fair Average Quality (FAQ) rice in Mid-Day Meal Scheme.

### **2.21.3 Diversion/ misuse of resources.**

No report has been received by the State regarding diversion and misuse of Mid-Day Meal rice during 2016-17.

### **2.21.4 Social discrimination.**

The State of Assam is blessed with no social discrimination. Mid-Day-Meal is taken by children together of different strata/caste-creed/religion etc.

### **2.21.5 Action taken and safety measures adopted to avoid recurrence of such incidents. Whether Emergency Plan exists to tackle any untoward incident.**

Time to time SMCs has been instructed to maintain hygienic environment during preparation and delivery of Mid-Day Meal and to maintain fire safety. Fire extinguishers have also been provided in the schools for Fire safety. Almost all schools have display Emergency plan in front of office room of the schools.

## **2.22 Status of Rashtriya Bal Swasthya Karyakram (RBSK):**

**Rashtriya Bal Swasthya Karyakram (RBSK)** is a continuous School Health Programme to improve child survival & quality life. Systematic approach to early identification of **4Ds: Defects at birth, Diseases, Deficiencies and Developmental delays including Disabilities in children in the age group of 0-18 years**. Existing school health programme under NHM is now expanded to include comprehensive screening for all children. Scheme is expected to cover more than 27 crore children in a phased manner.

This initiative ensures free management and treatment including surgical interventions at tertiary level through NHM. To cover the AWCs and schools, Mobile Health Teams (MHT) are entrusted to accomplish the goal.

Total 306 MHTs are running through out the Assam in which comprises following members:

- **First Team:** Two nos. MO (Ayush), one ANM, one Pharmacist.
- **Second Team:** One MO (Ayush), one Dental Surgeon, one ANM, one Pharmacist.

### **2.22.1 Provision of micro- nutrients, de-worming medicine, Iron and Folic acid (WIFS).**

#### **Provision of micro-nutrients:**

Vitamin A deficiency has been recognized as one of the major preventable public health and nutritional challenge. An estimated 5.7% children in India suffer from eye signs of Vitamin A deficiency. Recent evidence suggested that even mild form of Vitamin A deficiency increases morbidity and mortality among the U-5 children. Under the National Prophylaxis Programme for Prevention of Blindness due to Vitamin A deficiency, there is a provision of administration of Vitamin A on a periodic basis.

#### **National Deworming Day:**

Through this programme all pre-school and school-age children (enrolled and non-enrolled) age between 1-19 years are dewormed through the platform of schools and Anganwadi Centres in order to improve their overall health, nutritional status, access to education and quality of life.

Deworming is done by using tablet Albendazole in single dose, which is to be chewed and swallowed along with water. The tablet is effective, safe and the drug available under Govt. supply complies with all statutory quality standards. Extensive experience of deworming millions of children worldwide confirms that this drug itself causes only rare, mild and transient adverse reactions in case of children harbour more infections of high intensity, which need treatment for worm infestation. These reactions are generally related to degeneration of the worms that have been killed. Mild abdominal pain, nausea, vomiting, diarrhea and fatigue are the most commonly reported adverse events in some children with increased worm load, are not serious and do not normally require medical treatment. An Emergency Response System has been put in place by the Health and Family Welfare Department of the State Government to manage any adverse events, mild and/ or severe. In case of any such adverse events, don't panic, as these adverse events are usually very mild in nature and likely to subside soon.

Children and young adults are most vulnerable to worm infestation. The World Health Organization (WHO) estimates that 241 million children between the ages of 1 and 14 years are at risk of parasitic intestinal worms in India, known as soil-transmitted helminths (STH). These parasitic infections result from poor sanitation and hygiene conditions, and are easily transmitted among children through contact with infected soil.

Worms can cause anaemia and under-nutrition, thereby impairing mental and physical development. Children with the highest intensity of worm infestation are often too sick or too tired to concentrate at school or attend school at all. Subsequent life outcomes for these children are also considerably impacted due to lower lifetime incomes.

As per National Centre for Disease control (2016) the prevalence of worms in Assam is 50% and is among the high prevalence states in India. Similarly, prevalence of under-nutrition (stunting) is 36% while prevalence off anaemia among adolescent is 47% in Assam. This necessitates deworming among all especially children and adolescent of 1 to 19 years to-

- Improved cognition, educational achievement.
- Reduction in school absenteeism.
- Reduction in community helminth transmission.

A total of 49,31,482 children in 53,430 schools were provided deworming tablets.

**National Iron Plus Initiative (NIPI) :**

Anemia, a manifestation of under-nutrition and poor dietary intake of iron is a serious public health problem among pregnant woman, infants, young children and adolescents. The magnitude of Anemia together with the associated adverse health, development and economic consequences, highlights the need for intensified action to address this public health problem. Data suggests that 7 out of

every 10 children aged 6-59 months in India are anemic. Anemia is a major public health problem in Assam. As per NFHS-4, 46% of all women, 44.8% of pregnant women, 35.7% of U5 children are anemic in Assam.

According to the WHO, Weekly Iron and Folic acid Supplementation (WIFS) is a key intervention for prevention of anemia. Ministry of Health and Family Welfare, GOI launched the WIFS programme in 2012 to meet the challenge of the high prevalence incidence of anemia in children and adolescents which is renamed as NIPI in 2013. WIFS is an evidence-based response to the prevailing anaemia situation and includes weekly supervised ingestion / administration of IFA supplementation. The program's long term goal is to break the intergenerational cycle of anaemia: while in the short term, it improves India's human capital through improved nutrition status.

This programme is for all school going boys and girls in school (5-19 years) and out of school girls (5 -19 years) in urban and rural areas and will be implemented through the platform of Government / Government aided/ municipal schools and AWCs. The strategy involves a "fixed day – Monday" approach for IFA distribution. Teachers and AWWs supervise the ingestion of the IFA tablet by the beneficiaries.

Advantage of supplementations are :

- Increase in IQ leading to better academic performance of the students.
- Increase in learning ability
- Increase in concentration.
- Increase in energy levels and output in day to day work.
- Increase in overall capacity to work and earn.
- Physically more active facilitating increased participation in extra curricular activities.
- Reduction in school absenteeism.

A total of 10,77,571 children in 36,431 schools were provided weekly iron & folic acid supplementation (WIFS).

#### **2.22.2 Distribution of spectacles to children with refractive error.**

The children are screened through MHT in schools and identified children are referred to the appropriate health facility for further screening.

#### **2.22.3 Recording of height, weight etc.**

Height and weight of the children in AWC and schools are measured by the MHT by using infant-meter/ stadiometer, weight scale, categories them as severe/moderate malnourished children and refer them to the counseling centre for proper counseling.

#### **2.22.4 Number of visits made by the RBSK team for the health check-up of the children.**

Under RBSK programme, 306 Mobile Health Teams are there for screening children in AWCs and schools and refer the children to other health facilities for secondary/ tertiary treatment free of cost.

Screening of children is done twice in a year in AWC and once in a year in school through Mobile Health Team.

Under this programme, a total of 36,69,826 children in 48,357 schools were covered.

## **2.23 Present monitoring structure at various levels. Strategy for establishment of monitoring cell at various levels viz. Block, District and State level for effective monitoring of the scheme:**

The State Govt. had notified the formation of State, District & Block level Monitoring Committee for over all monitoring of the implementation of Mid-day Meal scheme. District Level Monitoring Committee headed by senior most MP of the district has been constituted and meeting of the committees is held to review the status of implementation of the programme. All 27 districts have conducted the meetings. The School Management Committees have already been constituted in schools including 75% parents' members of the state. SMC look after day-to-day implementation of the scheme with close co-ordination with teachers and Mothers Self Help Groups.

## **2.24 Meetings of Steering cum Monitoring Committees at the Block, District and State level:**

### **2.24.1 Number of meetings held at various level and gist of the issues discussed in the meeting.**

The State level Steering cum Monitoring Committee meeting was held on 7<sup>th</sup> May, 2018. The District Administrations regularly holds District Development Committee meeting to discuss inter-alia implementation of Mid-Day Meal scheme in the district. The Additional Deputy Commissioner, in-charge of Education regularly reviews the status of implementation of MDM scheme with DEEOs cum DMCs, BEEOs cum BMCs, SSA & MDM officials etc.

Major issues discussed in the SSMC meeting:

1. Timely delivery of rice to the schools under Mid-Day-Meal Scheme.
2. Hand washing facility to be provided to all schools, if required, in phased manner.
3. Exploring the possibility to enhance the remuneration of Cook-cum-helper of Rs.1000/- per month, as this is very low considering the present price rise of day-to-day commodities.
4. Training of the Head Teacher cum Member Secretary of SMCs on proper maintaining of books of accounts especially on MDMS.
5. The need for contingency plan in schools and to create awareness amongst teachers.
6. E-payment of honorarium to cook-cum-helpers through SMC concerned.
7. Regular inspection of schools.
8. Holding of regular Parent-Teachers meet in school.

### **2.24.2 Action taken on the decisions taken during these meetings.**

The necessary actions have been taken as per resolutions taken during the meetings held at State, District for improvement of implementation of Mid-Day Meal Scheme.

## **2.25 Frequency of meeting of District Level Committee held under the chairmanship of senior most MP of the District to monitor the scheme. Gist of the issues discussed and action taken thereon:**

District level Monitoring Committees meeting is held at district level. At least one round of meeting is held in almost all districts of the State. The following issues are mainly raised in the district level monitoring committees' meeting-

- Quality of food and menu.
- Construction of cooking shed.
- Payment of cost of food grains to FCI.

## **2.26 Arrangement for official inspections to MDM centers/schools and percentage of schools inspected and summary of findings and remedial measures taken:**

The Director of Elementary Education, Assam and the then SNO, MDMS issued instruction to the District, Sub-divisional and Block level officers to inspect at least 25% schools/ centres in every quarter. As reported, the district level officers inspect schools regularly. Target for school inspection has been fixed as below for DEEO, D.I. of schools, BEEO, S.I. of schools.

- DEEO will have to visit 15 schools in a month.
- D.I of schools will have to visit 20 schools in a month.
- BEEO will have to visit 25 schools in a month.
- SI of schools will have to visit 40 schools in a month.

As per MIS Web Portal data, a total of 87,579 schools were inspected by districts and block level officials during 2016-17 (up to December, 2016).

Apart from above, SSA & MDM functionaries from State to District & Block level offices are also entrusted to visit schools to provide necessary support at field levels for smooth implementation of MDM activities.

## **2.27 Details of the Contingency Plan to avoid any untoward incident. Printing of important phone numbers (eg. Primary health center, Hospital, Fire brigade etc) on the walls of school building:**

The DNOs, MDMS cum Deputy Commissioners/Principal Secretaries (Autonomous Council) were instructed by the Govt vide letter no. PMA/MDM-Cell/62/2011/36, dtd. 25<sup>th</sup> July, 2013 to ensure having of a contingency plan at School, Block, Sub-Division and at the District Level to face any sort of incident that may possibly occur in connection with MDM scheme. The contact numbers of the important functionaries are to be displayed in visible place preferably Wall in the schools to use at urgent/emergency moment. All schools including offices have maintained above instruction.

### **i. Contingency Plan for district :**

The important phone numbers of Deputy Commissioner, Additional Deputy Commissioner, District Civil Hospital, Ambulance service, DEEO, DMC are reflected on the wall of DEEO/ DMC office and Inspector of Schools office and the phone Number of Head teacher of all schools are reflected in a diary.

### **ii. Contingency Plan for Block :**

The important phone numbers of Deputy Commissioner, Additional Deputy Commissioner, District Civil Hospital, Ambulance service, DEEO, DMC, BEEO, BMC,



Public Health Centre are reflected on the wall of BEEO/ BMC office and the phone Number of Head teacher of all schools are reflected in a diary.

**iii. Contingency Plan for Schools :**

- The important phone numbers of Deputy Commissioner, Additional Deputy Commissioner, District Civil Hospital, Ambulance service, DEEO, DMC, BEEO, BMC, Public Health Centre, Headmaster of the school, SMC President are reflected on the wall of the School.
- Schools should keep First-Aid-Box with adequate medicines, bandage, detol, cotton, sand etc.

Also, the following steps are taken by District authority / school authority.

- ✓ If cooked food is found contaminated that may be buried under ground.
- ✓ Unusable rice may be destroyed in presence of district administration.
- ✓ Always use agmarked oil, turmeric etc. in cooking food.
- ✓ Cooked food must be tested by the teacher/ SMC member before 30 minutes ahead of distribution of the same among the children.
- ✓ Fast aid training to be arranged for teacher & SMC members.
- ✓ Fire extinguisher shall be installed in the school.

In this regard, instruction from the Government will be issued shortly to the District Administration, district and block officials of Education Department and School authority for strict compliance.

## **2.28 Grievance Redressal Mechanism:**

### **2.28.1 Details regarding Grievance Redressal at all levels.**

A Toll Free Contact Centre is setup at State Mission Office for SSA & MDMS with the number 18003453525, through which 22 complaints / grievances with respect to MDMS have been received till 31<sup>st</sup> March, 2019. Complaints are referred to the concerned district officials to enquire into the matter with competent authority and take necessary action as deemed appropriate. Accordingly, all complaints have been redressed.

### **2.28.2 Details of complaints received i.e. Nature of complaints etc.**

Most of the complaints are related to quality & quantity of MDM, corruption, irregularities of serving MDM etc.

### **2.28.3 Time schedule for disposal of complaints.**

The district officers have been asked to dispose of the complaints within 10 days by following due process. The State & District officials of MDM have frequently visited the schools against which complain received and necessary action have been taken in this regards.

### **2.28.4 Details of action taken on the complaints.**

As reported, action has been taken against 5 complaints till March, 2019 and remaining 17 complaints are under investigation at district level.

## **2.29 Details regarding Awareness Generation & Information, Education and Communication (IEC) activities and Media campaign, carried out at State/district/block/school level:**

Various steps are taken for awareness generation on MDM in the State. Hoardings on MDMS as IEC were installed in prominent places of district headquarters. Arrangement has also been made for fixing / fitting MDM logo in all schools. MDM Calendars having information with regard to norms of the scheme, MDM Rules, 2015, Guidelines of Tithi Bhojan are also provided to schools and offices of Education Department and district administration offices. In SMC training, issues related to MDM are also shared. Detailed MME activities have been furnished in a separate MDM plan.

## **2.30 Overall assessment of the manner in which implementation of the programme is contributing to the programme objectives and an analysis of strengths and weaknesses of the programme implementation:**

Impact of MDM scheme is found to be wide and varied. The impact of the Scheme has been considerably significant with regard to enrolment and retention of children in schools. The food provided in school has given physical and mental strength to the children for study and created a joyful atmosphere in classrooms activities.

As far as the implementation of MDMS in the State is concerned, the areas of strength and weakness may be mentioned as below:

### **Strength:-**

1. Absence of social and caste prejudice.
2. Awareness of parents/ guardians.
3. Adequate budget provision.
4. Incorporation of group hand-wash facilities, Kitchen Garden.
5. Strong monitoring and support system with the functionaries of SSA, Assam.

### **Weakness:-**

1. Lack of knowledge on books of accounts on the part of SMC.
2. Computerization of data to monitor all aspects of MDM scheme.
3. Delays in fund flow.

## **2.31 Action Plan for ensuring enrolment of all school children under Adhaar before the stipulated date:**

At present, Adhaar has not been implemented properly in Assam due to NRC.

## **2.32 Contribution by community in the form of Tithi Bhojan or any other similar practices in the State/ UT etc.:**

In the State, community plays a pivotal role for smooth implementation of MDMS. Contribution of communities as far as monitoring of the scheme, developing kitchen garden, ensuring had-wash facilities, providing local vegetables are quite tangible. State has already implemented the programme called “**Sampriti Bhojan**” to encourage communities in the schools to benefit the children. In this regards, State Govt. had issued notification on 25<sup>th</sup>August/2015 vide No.PMA/MDM-Cell/09/2015/4 dtd. 25<sup>th</sup> August, 2015. The content of the notification is as follows:

In pursuant to D.O. letter No. F.1-7/2014-Desk (MDM) dated 20/11/2014 from Hon'ble Minister HRD of Govt. of India, the Governor of Assam is please to notify an innovative program called "Sampriti Bhojan" for implementing throughout the State for providing supplementary nutritive items/ foods like sweet, fruits, snaked and biscuits etc. to the children of the schools in addition to Mid-Day Meal being provided to the school going children, with voluntary support from the community for creating large scale community participation in the affairs of schools and also for generating feelings of social harmony, equity and brotherhood amongst school children.

"Sampriti Bhojan" programme is a voluntary initiative of the local parents/ guardians / community to provide such nutritious food to the school going children as a part of their observance of birthdays, anniversaries, child birth, success in examinations, marriage party and family function or during festivals in the community or observance of any important day etc.

As per guidelines of Mid-Day Meal, the State Govt. is to be provided 480 calorie for Lower Primary School children and 750 calorie for Upper Primary School children. On the other hand children at this stage require more nutritious food for their growth and development. In order to provide supplementary foods like sweets, fruits, sprouted beans, cooked snaked, egg etc. to the children of the schools in addition to Mid-Day Meal, a special programme Sampriti Bhojan has been implemented throughout the state.

A good number of Sampriti Bhojan programme were conducted by community/individual in their schools. The programme is expected to be extended during 2019-20. In addition, the guideline of Tithi Bhojan provided by the MHRD, Govt. of India has been translated into Assamese language and printed in MDM Calendar, 2019. During 2019-20, it is proposed to install hoarding on Sampriti Bhojan in prominent places of the districts.

## **2.33 Kitchen Garden**

### **2.33.1 Status of availability of kitchen gardens in the schools. (Please furnish school-wise details for all districts in the table given at Annexure-W1).**

Kitchen Garden is a source of fresh nutritious vegetables for school feeding. Children are encouraged to eat more vegetables if they participate in planting and harvesting of garden produce. Kitchen garden is an effective learning venue for students to increase their knowledge and learn more about gardening practices they can do in their own backyards. School children also learn to appreciate conservation of nature as well as the importance of vegetables for health and wellness.

- Establish the green atmosphere in the school surrounding.
- Students get benefit of school vegetable garden.
- Students get nutritious vegetables in MDM.
- Students get knowledge of work.
- Knowledge of horticulture and agriculture growth can be developed.
- Awareness about environmental education.
- Information of vegetables and its uses.
- Increase involvement of students, teachers and community.

- Upholds dignity of labour.
- Instills love for nature.
- Promotes concept of greenery.
- Helps in developing a good hobby.
- Helps in beautifying the school.
- Encourage self sufficiency.

Under these circumstances, SMCs of the concerned schools/communities/teachers are requested to develop kitchen garden in their own school with the help of students. The result is so encouraging in almost all schools. The students are enjoying eating green vegetables from their own kitchen garden.

The required data is given in the prescribed table.

### **2.33.2 Mapping of schools with the corresponding Krishi Vigyan Kendras (KVK).**

It will be carried out during 2019-20 in convergent with KVK.

### **2.33.3 Details of the mechanisms adopted for the setting up and maintenance of kitchen garden.**

It will be carried out during 2019-20 with the help of community and KVK.

### **2.33.4 Whether the produce of these kitchens is used in MDM.**

All produced leafy green vegetables etc. in schools kitchen garden are used in MDM and students are enjoying eating green vegetables from their own kitchen garden.

### **2.33.5 Action plan for setting up of kitchen gardens in all schools.**

It may be mentioned that majority of the schools have make Kitchen Garden in the school campus. Some of the schools (mainly in urban areas) do not have kitchen garden due to lack of sufficient land. Scientific measures for development of kitchen garden will be adopted.

## **2.34 Details of action taken to operationalize the MDM Rules, 2015:**

As per Notification of MDM Rules, 2015, the DNOs, MDM have been informed to implement the Rules immediately for implementation of Mid Day Meal Scheme. In addition, the MDM Rules, 2015 has been translated into Assamese, Bengali and Bodo languages and printed with the booklet on “guidelines on food safety and hygiene for school level kitchens under MDM Scheme” and distributed to the schools. Accordingly, training has been conducted to Cook cum Helpers, President & Member Secretary of the SMCs on food safety and hygiene for school level kitchens and MDM Rules, 2015. Further, MDM Rules, 2015 has also been printed in the MDM Calendar, 2018 and provided to all schools of educational offices. During 2019-20, it is proposed to install hoarding on MDM Rules, 2015 in the prominent places of the districts.

## **2.35 Details of payment of Food Security Allowances and its mechanism:**

No payment of Food Security Allowances has been materialized till date. However, details of payment of Food Security allowance has been communicated to the field level offices.

## **2.36 Cooking Competition**

### **2.36.1 Whether cooking competitions have been organized at different levels in 2018-19.**

No. However, during 2019-20, the programme will be conducted in one selected cluster of all 33 districts as pilot project.

### **2.36.2 If yes in 2.36.1,**

#### **2.36.2.1 The number of participants in these competitions.**

Does not arise.

#### **2.36.2.2 Details of Judges.**

Does not arise.

#### **2.36.2.3 How many participants were awarded.**

Does not arise.

#### **2.36.2.4 Was the awarded participants given any cash prizes.**

Does not arise.

#### **2.36.2.5 Whether the awarded recipes have been shared with schools.**

Does not arise.

### **2.36.3 Details of action plan for the year 2019-20.**

Three (03) randomly selected clusters of each district is proposed to be taken up for conducting Cooking Competition. It may be mentioned that after CRC remapping, there will be a total 4609 CRCs in the 33 districts across the State. Average 12 schools will be under one cluster. So, a total of 1,188 schools will be under 99 clusters in 33 districts.

District Resource Group (DRG) comprising DIET Principal and Lecturer will be involved as Judge in every district. Three (03) DRG members will visit each school of the three selected clusters of the concerned districts. A convenient date in a week will be fixed for conducting Cooking Competition and this date will be fixed for all 12 schools of the cluster.

Menu will be the same of the proposed date as suggested in the “**Weekly Menu of the Mid Day Meal Scheme**”. No other item(s) will be considered for this Cooking Competition.

A lump sum amount of Rs.300/- per head per visit will be provided to the DRG members as TA and for which, an amount of **Rs.10,69,200/-** will be required as TA for DRG members for conducting Cooking Competition in 1,188 schools of 99 cluster in 33 districts.

Cash prize will be provided to the Cook cum Helpers of the concerned schools as follows:

1. First Prize : Rs.3,000/-
2. Second Prize : Rs.2,000/-
3. Third Prize : Rs.500/-

Hence, an amount of Rs.5,500/- will be required for one district for cash prize. Therefore, for all 33 districts, a total of **Rs.1,81,500/-** will be required for cash prize. The entire amount of **Rs.12,50,700/-** [TA for DRG members and Cash Prize] for the proposed programme will be met from MME component of AWP&B, 2019-20.

The modality of the entire programme will be finalized and to be carried out in consultation with district officials and DRG members.

### **2.37 Details of minor modifications from the existing guidelines carried out by District Level Committee chaired by the District Magistrate.**

No proposal is received from the districts till date. However, the matter will be communicated to the districts once again for submission of any suggestion/modification etc. of the existing guidelines of MDM Scheme.

### **2.38 Details of new interventions envisaged under 5% flexi funds – for each intervention, please provide detailed information in the below template.**

#### **2.38.1 Background note.**

During this financial year 2019-20, 02 (two) activities for supplementary nutrition has been proposed under flexi fund. One of the activities is development of kitchen garden by providing financial assistance to the schools and other activity is to provide one egg or food of similar nutritional value per week to the children for 08 weeks. Development of kitchen garden will provide fresh leafy vegetables to the children thereby increasing the nutritional value of the meals served.

#### **2.38.2 Objectives.**

The main objective of flexi fund is to improve the effectiveness of the scheme by addressing the gaps, such as uplifting the nutritional value of the meals served etc.

#### **2.38.3 Rationale for the intervention.**

To increase the nutritional value among the children.

#### **2.38.4 Timeline.**

During the financial year 2019-20.

### **2.38.5 Coverage.**

**2.38.5.1 Number of districts:-** 33 districts.

**2.38.5.2 Number of schools:-** 56,910 schools.

**2.38.5.3 Number of children:-** 40,51,337 children.

**2.38.5.4 Number of working days:** LP-210 days, UP-220 days.

### **2.38.6 Requirement of funds.**

The total 5% flexi fund amounting to Rs.3086.07 lakh.

### **2.38.7 Monitoring.**

The monitoring will be carried out by the departmental officers for proper implementation of the activities to be carried out under the flexi fund and effective utilization of the fund.

### **2.38.8 Outcome measurement.**

Through monitoring system.

### **2.38.9 Impact assessment.**

The impact of the implementation of the activities under flexi fund will be assessed in the next financial year.

## **2.39 Any other issues and Suggestions.**

- ❖ Cook cum Helpers has been paid honourarium of Rs.1,000/- per month for 10 months in a financial year w.e.f. 2010. No enhancement of honourarium is made since 2010. In this context, a number of memorandums have been received from Cook cum Helpers Associations (district units) with the demands for enhancement of their monthly honourarium etc. The common demands are provision for enhancement of monthly honourarium, provision of honourarium to Cook cum Helpers for 12 months, provision of job security, medical, pension, insurance, social security etc. to Cook cum Helpers. Subsequently, Associations have been made frequently stage/dharna in front of the office of State Nodal Officer, MDMS, District Nodal Officer, MDMS, DC's office, Block offices etc. However, Central Government is requested kindly to look into the matter sympathetically and enhance the monthly honourarium of CCHs as they are come from weaker section/BPL category.

It may be mentioned that Govt. of India did not provide honourarium of CCHs for the month of July (considered as Summer Vacation) and December (considered as Examination Month). But, cooking cost is being provided to the schools for the month of December. It is pertinent to mentioned here that during the month of December,

at least 10 to 15 days is open the schools and children are attend the schools for 1<sup>st</sup> week of the month of December for examination. The CCHs are attend the schools during 10 to 15 days during the month of December and cook MDM and provided to the children.

Under such circumstances, Central Government is requested to consider the matter and to provide honourarium to CCHs for the month of December.

- ❖ Mother Self Help Group may be engaged in schools to relieve teachers for carry out day to day activities of the MDM Scheme.
- ❖ Improvement in nutritional value of the food through additional micro nutrient.
  
- ❖ State has set up dedicated cell for MDMS engaging key functionaries on contractual basis. Present norms for allocation of MME fund under AWP & B needs to be re-considered to enhance the salary of MDM functionaries vis-à-vis to carry out all essential activities.

**Important Outcomes of the Programme :**

- ❖ Regular attendance.
- ❖ Reduction of Dropout rate.
- ❖ Improvement of retention rate.
- ❖ Reduction of Seasonal ailment.
- ❖ Increase in Nutritional status.
- ❖ Belongingness of the parents/guardians to the institution.



## Action taken note on PAB suggestion in PAB-MDM Meeting, 2018-19:

### Point 1: Coverage of Children:

PAB suggestion	Action Taken/Status
JS (EE), Govt. of India enquired from the State Govt. the reasons for decline over 2 lakh enrolment and share a detailed report with Govt. of India	Gunotsav is one of the important initiatives of the State. State has conducted two round of Gunotsav in the academic year, 2017 & 2018. Gunotsav was OMR based and students name were entered in the OMR individually. Massive exercise was done for cleaning of child data during the time of Gunotsav, so that no duplicacy of data may be found.

### Point 2: Interruption in MDM serving in some schools as per ARMS:

PAB suggestion	Action Taken/Status
As per Automated Reporting and Monitoring System (ARMS), there was interruption in serving of MDM in some of the schools in the month of March, 2018.	<p>Total number of Schools ported into the ARMS web portal as on 26<sup>th</sup> April'19 is 54,882. The district-level training to the Resource Persons (RP) has been completed and accordingly, CRCCs have been trained up by the RPs.</p> <p>The process of Daily and Monthly data reporting in ARMS on all the working days by the HT/HM from their registered mobile numbers have been initiated in the State. As on 3<sup>rd</sup> May'19, the percentage of daily data reporting is 32.22% and the percentage of monthly data reporting for the month of May'19 is 12.85%. The State is frequently insisting all the schools to initiate the data reporting process 100% in ARMS.</p> <p>However, 100% coverage of data reporting by all the schools could not be initiated due to following reasons:</p> <ol style="list-style-type: none"><li>1) Whenever data is reported to the server by the registered mobile numbers, the confirmation of SMS delivery is not received by the users. This creates the confusion among the users about its delivery.</li><li>2) Most of the districts reported that though the Daily and Monthly data are successfully sent to the server by the registered mobile numbers, these are not always reflected in the web portal which affects the overall data reporting status of the State. This problem is not a mobile provider specific.</li></ol> <p>In remote areas, network coverage is very poor for which though SMS are sent by the users, data is not delivered to the server.</p> <p>The entire technical issues/problems have already been brought to the notice of MHRD and NIC, Himachal Pradesh to resolve the technical problems/issues at the earliest.</p>

**Point 3: Kitchen cum Stores:**

PAB suggestion	Action Taken/Status
Construction of 5,122 kitchen-cum-stores is yet to be started @Rs.60,000/- per unit sanctioned during 2008-09. Requested State Govt. to surrender the entire fund along with interest accrued thereon and submit new proposal as per plinth area norms and current SORs of PWD (B) prevailing in the State.	Communication has already been made to the MHRD, Govt. of India to provide information regarding the process/method of surrender of entire fund along with interest accrued thereon [Rs.30,73,20,000 + Rs.21,51,42,948 (interest accrued) = Rs.52,24,62,948]. But, no reply is received from the MHRD yet. Further, alternatively a new proposal is prepared as per current SOR of PWD (B), 2013-14 prevailing in the State for construction of 5,122 kitchen cum stores @Rs.2,70,008/- [Total Rs.138,29,80,976] in place of earlier unit cost of Rs.60,000/- and requested Central Govt. to provide additional amount [Rs.138,29,80,976 - Rs.52,24,62,948] of Rs.86,05,18,028/- vide letter No.SSA/MDM/K-cum-S/56/2016/Pt.-I/7691 dtd. 24/04/2019.

**Point 4: Payment to FCI:**

PAB suggestion	Action Taken/Status																								
As per FCI statement, the State needs to make pending payment of Rs.9.94 crore of FCI with respect to cost of food grains.	<p>As on 30<sup>th</sup> April, 2018, the pendency has been reduced to Rs.6.85 crore (Rs.0.41 crore in 2016-17 and Rs.6.44 crore in 2017-18).</p> <p>All pending bills amount up to 2017-18 amounting to Rs.74,42,605/- has been released to the DNOs, MDMS for onward payment to the FCI authority.</p> <table border="1"><thead><tr><th>District</th><th>Year</th><th>Amount (in Rs.)</th></tr></thead><tbody><tr><td>Cachar</td><td>2017-18</td><td>21,31,746.00</td></tr><tr><td>Darrang</td><td>2016-17</td><td>1,524.00</td></tr><tr><td>Hailakandi</td><td>2016-17 &amp; 2017-18</td><td>19,82,135.00</td></tr><tr><td>Karimganj</td><td>2016-17 &amp; 2017-18</td><td>30,33,897.00</td></tr><tr><td>Lakhimpur</td><td>2014-15, 2015-16 &amp; 2016-17</td><td>1,96,493.00</td></tr><tr><td>Udalguri</td><td>2017-18</td><td>96,810.00</td></tr><tr><td colspan="2"><b>Total</b></td><td><b>74,42,605.00</b></td></tr></tbody></table> <p>As on date, there is no pending bill for payment to FCI up to 2017-18.</p> <p>Regarding payment in regard to cost of rice during 2018-19, all funds up to 4<sup>th</sup> quarters has been released to the DNOs, MDMS and confirmation has been sought from DNOs, MDMS on payment to FCI authority.</p>	District	Year	Amount (in Rs.)	Cachar	2017-18	21,31,746.00	Darrang	2016-17	1,524.00	Hailakandi	2016-17 & 2017-18	19,82,135.00	Karimganj	2016-17 & 2017-18	30,33,897.00	Lakhimpur	2014-15, 2015-16 & 2016-17	1,96,493.00	Udalguri	2017-18	96,810.00	<b>Total</b>		<b>74,42,605.00</b>
District	Year	Amount (in Rs.)																							
Cachar	2017-18	21,31,746.00																							
Darrang	2016-17	1,524.00																							
Hailakandi	2016-17 & 2017-18	19,82,135.00																							
Karimganj	2016-17 & 2017-18	30,33,897.00																							
Lakhimpur	2014-15, 2015-16 & 2016-17	1,96,493.00																							
Udalguri	2017-18	96,810.00																							
<b>Total</b>		<b>74,42,605.00</b>																							

**Point 5: MME Utilisation:**

<b>PAB suggestion</b>	<b>Action Taken/Status</b>
State had utilized only 59% of MME against allocation. JS(EE.I), Govt. of India enquired the reasons for low utilization of MME.	<p>State Govt. had decided to provide aprons and head gears to cook-cum-helpers from the MME component during 2017-18. Accordingly, State Govt. had floated e-tender for the purpose, but the process could not be completed during the F.Y. 2017-18 due to non qualified parties, resulting into less utilization of MME fund.</p> <p>During 2018-19, Apron and Head Gear has been provided to Cook cum Helpers. The utilisation of fund under MME component is increased up to 76.08% during 2018-19.</p>

**Point 6: Mismatch in utilising of cooking cost and food grains:**

<b>PAB suggestion</b>	<b>Action Taken/Status</b>
It was informed that there is a mismatch (10%) in utilization of food grains (85%) and cooking cost (95%).	Mismatch in utilization of food grains (85%) and cooking cost (95%) was due to the fact that children of Lower Primary and Upper Primary category are not able to consume 100 gms and 150 gms of rice respectively.

**Point 7: Provision of Safe Drinking Water:**

<b>PAB suggestion</b>	<b>Action Taken/Status</b>
Joint Secretary (EE.I) observed that the State has not shared the data on availability of water filtration facility in schools. He advised the State officials to collect the requisite information and also ensure that all schools have safe drinking water facility.	<p>At present, 3030 schools (elementary &amp; composite high schools) are without drinking water facility as per U-DISE, 2017-18.</p> <p>To provide drinking water facility to 3030 schools, proposal is prepared by Samagra Shiksha, Assam and incorporated in AWP&amp;B, 2019-20.</p>

**Point 8: Kitchen Garden:**

<b>PAB suggestion</b>	<b>Action Taken/Status</b>
Regarding Kitchen Garden in Schools, Joint Secretary (EE.I) appreciated the efforts made by the State and advised to set up kitchen gardens in all schools where land is available. He further suggested that State Horticulture Department, Krishi Vigyan Kendras (KVK) etc. may also be roped in for this purpose.	The matter will be taken up with Horticulture Department and Krishi Vigyan Kendras (KVK) during 2019-20.

**PROPOSAL FOR REQUIREMENT OF FUND UNDER DIFFERENT ACTIVITIES UNDER AWP&B, 2019-20 :**

**[A] No. of institution, enrolment & average no. of children to be opted Mid-Day Meal as per U-DISE, 2017-18:**

#	Stage	Lower Primary Stage			Upper Primary Stage			Total		
		Institution	Total Enrolment	No. of children to be opted MDM	Institution	Total Enrolment	No. of children to be opted MDM	Institution	Total Enrolment	No. of children to be opted MDM
1	Govt. / LB	39,781	26,27,475	25,53,696	9,509	11,56,995	10,51,630	49,290	37,84,470	36,05,326
2	Govt. Aided school	3,505	1,69,103	1,63,912	4,115	2,98,464	2,70,384	7,620	4,67,567	4,34,296
3	STC	41	1,844	1,844	150	9,871	9,871	191	11,715	11,715
<b>Total</b>		<b>43,327</b>	<b>27,98,422</b>	<b>27,19,452</b>	<b>13,774</b>	<b>14,65,330</b>	<b>13,31,885</b>	<b>57,101</b>	<b>42,63,752</b>	<b>40,51,337</b>

**[B] Component-wise Budget Proposal in AWP &B for 2019-20 :**

<b>Recurring Assistance:</b>									
Items	Central Share				State Share				Total (CS+SS)
	Primary	UP	NCLP	Total	Primary	UP	NCLP	Total	
Cooking cost	22314.28	17170.66	33.71	39518.65	2511.07	1904.60	3.74	4419.41	43938.06
Cost of food grains	1712.09	1318.57	2.59	3033.25	-	-	-	-	3033.25
Transportation cost	776.15	597.75	1.17	1375.07	-	-	-	-	1375.07
MME	958.83	515.35	1.01	1475.19	-	-	-	-	1475.19
Honourarium to Cook cum Helper	7694.91	3014.91	-	10709.82	854.99	334.99	-	1189.98	11899.80
<b>Total</b>	<b>33456.26</b>	<b>22617.24</b>	<b>38.48</b>	<b>56111.98</b>	<b>3366.06</b>	<b>2239.59</b>	<b>3.74</b>	<b>5609.39</b>	<b>61721.37</b>
<b>Non- Recurring Assistance :</b>									
Kitchen Devices	-	4.23	-	4.23	-	0.47	-	0.47	4.70
Repairing of Kitchen cum Store	2607.12	-	-	2607.12	289.68	-	-	289.68	2896.80
<b>Total</b>	<b>2607.12</b>	<b>4.23</b>	<b>-</b>	<b>2611.35</b>	<b>289.68</b>	<b>0.47</b>	<b>-</b>	<b>290.15</b>	<b>2901.50</b>
<b>Flexi Fund</b>	<b>-</b>	<b>-</b>	<b>-</b>	<b>2777.46</b>	<b>-</b>	<b>-</b>	<b>-</b>	<b>308.61</b>	<b>3086.07</b>
<b>Grand Total</b>	<b>36063.38</b>	<b>22621.47</b>	<b>38.48</b>	<b>61500.79</b>	<b>3655.74</b>	<b>2240.06</b>	<b>3.74</b>	<b>6208.15</b>	<b>67708.94</b>

**N.B.:**

1. Rate for cooking cost: **Rs.4.35** per child per day for LPS; **Rs.6.51** per child per day for UPS & NCLP.
2. Cost of food grains (rice) : **Rs.3,000/-** per MT.
3. Transportation cost: **Rs.1,360/-** per MT.
4. Honourarium to Cook cum Helper proposed to be continued 1,18,998 : **Rs.1000/-** per month for 10 months in a financial year.

**[C] Proposal of Food Grains Allocation in AWP &B, 2019-20:**

#	Stage	Proposal for allocation of food grains		Quantity in MTs.
		No. of children	No. of working days	
1	Primary @ 100 gms / child / school day (27,17,608x 210 x 0.0001)	27,17,608	210	57069.768
2	Upper Primary @ 150 gms / child / school day (13,31,885 x 220 x 0.00015)	13,31,885	220	43952.205
3	NCLP @ 150 gms / child / school day (1,844 x 312 x 0.00015)	1,844	312	86.299
<b>Total</b>		<b>40,51,337</b>	<b>-</b>	<b>101108.272</b>

**[D] Proposal for requirement of Cooking Cost :**

Cooking cost is provided for procurement of pulses, vegetables, oils and fats, salt and condiments and fuel through SMCs. SMCs is being procured these materials through local shopping. In Assam, mostly fire wood is used as fuel for cooking of the meal. Only, 13,474 schools are using LPG to cook the meal. Cooking cost is presently released from SNO to SMCs directly through e-transfer.

Total amount proposed against cooking cost is Rs.43938.06 Lakh. Details shown at table below-

Stage	Average number of children to be covered	Rate (Rs.)	Amount (lakh)
Lower Primary	27,17,608	Rs.4.35 per child per day for 210 days	24825.35
Upper Primary & NCLP	13,33,729	Rs.6.51 per child per day for 220 days for UP and 312 days for NCLP	19112.71
<b>Total</b>	<b>4051337</b>		<b>43938.06</b>

**[E] Proposal for requirement of Transportation Cost:**

Transportation cost is calculated on the basis of PDS rate i.e. Rs.136/- per quintal for lifting of rice from FCI godown to schools. Requirement of proposed fund for the year 2019-20 is shown at table below:

Stage	Rice (in MT)	Requirement of fund (in lakh)
Lower Primary	57069.768	776.15
Upper Primary & NCLP	44038.504	598.92
<b>Total</b>	<b>101108.272</b>	<b>1375.07</b>

**[F] Proposal of fund for Honorarium to Cook-cum-Helper:**

A total of 1,18,998 Cook-cum-helper (CCHs) has been engaged by School Management Committees under AWP & B, 2019-20. These CCHs were provided with an amount of Rs.1000/- per CCH per month for 10 months as monthly honorarium. Due to heavy demand raised by All Assam Cook-cum-Helpers Association from time to time regarding enhancement of their monthly honorarium from Rs.1000/- per month to Rs.5,000/- per month for 12 months.

Under AWP & B, 2018-19, a total of 1,18,998 CCHs are proposed to be continued by SMCs as per the norms and total requirement of fund will be Rs.11899.80 lakh.

***However, MHRD, Govt. of India is requested kindly to consider the matter of enhancement of honourarium of CCHs as demanded by the Association of CCH.***

## **Plan under Management, Monitoring and Evaluation (MME) for 2018-19 :**

1. **Setting up of Management Structure & Capacity building of staff.** : The State Government had decided to implement MDMS through Sarva Siksha Abhiyan, Assam with dedicated MDMS cells and experienced as well as qualified staff w.e.f. 1<sup>st</sup> January, 2014. Accordingly, officers/ staff have been engaged to look after day to day activities of Mid-Day Meal scheme as shown below. The pool of manpower has already been engaged for management, monitoring and maintaining and updating of all records related to MDMS. All staff/functionaries of the cells have already been trained about the roles and responsibilities of the officials and also provided with furniture and computers/laptop to perform the job in prompt manner.

### **Present Staff position:**

#### **State level :**

<b>Position</b>	<b>Total Numbers</b>	<b>In position</b>
Consultant (MDM)	1	1
State Programme Manager	1	0
State MIS Manager	1	0
Consultant (Acctt)	1	1
State Accounts Officer	1	0
Accounts Assistant	1	0
Statistical Assistant	1	0
LDA cum Typist	1	0
Electronic Data Processor	4	4
<b>Total</b>	<b>12</b>	<b>6</b>

*N.B.: The process for filling up the vacancy position has already been done. However, result could not be declared due to enactment of Model Code of Conduct of Lok Sabha Election.*

#### **District level :**

<b>Position (one each of the districts)</b>	<b>Total position</b>	<b>In position</b>
District Programme Manager	33	15
District MIS Manager	27	9
District Accounts Officer	27	12
Electronic Data Processor (District level)	6	6
Electronic Data Processor (Block level)	145	0
<b>Total</b>	<b>238</b>	<b>42</b>

*N.B.: The process for filling up the vacancy position has already been done except Block Level EDP. However, result could not be declared due to enactment of Model Code of Conduct of Lok Sabha Election.*

## **[2] MDM Calendar:**

State has provided MDM calendar as Information Education Communication (IEC) materials to all schools and offices of Education Department and district administration with the information like suggested weekly menu, calorie chart, norms with respect to all components (Cooking cost, honorarium to Cook-cum-Helper, Transportation Cost, Days to be served MDM, food grains entitlement etc). The calendar also displays best initiatives in the State with photographs portraying children of schools. The SSA-MDM Toll Free Number and address for communication to State MDM Offices have also been enlisted in the Calendar. It may be mentioned that guidelines of Tithi Bhojan provided by MHRD, Govt. of India has been translated into Assamese language and printed in MDM Calendar, 2019. Govt. of India has recognized MDM Calendar as “**Best Practice**” of the State. During 2019-20, it is proposed to continue the above activity as like 2018-19.

## **[3] Media Campaign:**

It is proposed to campaign through audio–visual (Jingle) on various issues on MDMS viz. MDM Rules, 2015, Tithi Bhojan, Food Safety & Hygiene, Roles of SMCs/Stakeholders, advertisement on Sampriti Bhojan etc. It is also proposed to install hoarding on Sampriti Bhojan and MDM Rules, 2015 at prominent places in the districts for awareness generation among the masses.

## **[4] MDM Logo:**

MDM Logo was provided to all schools by painting in flex with wooden frame during 2012-13. Almost all flex has been destroyed. So, it is proposed to provide MDM Logo by painting on the wall of all schools building.

## **[5] Apron and Head Gear for Cook cum Helpers:**

Food-borne illness is a widespread and potentially dangerous threat to all of us. The food safety standards required that all food handlers take all practicable measures to ensure anything from their body or clothing does not contaminate food or food contact surfaces, including minimizing direct contact with ready to eat food. If the food we eat is not handled properly, it can make us very sick or, in some cases, kill us. Handling food properly and safely is essential to preventing food borne illness.

Apron prevents cook clothes from coming in contact with the food, hence any germs, dust, hair etc, stay within the apron and off food plate. It may be mentioned that many incidents of clothes catching fire, minor burns are also a part of daily cooking. Well by merely wearing an apron, it tucks in all the loose clothing and clothes are firmly secured to cook body.

To prevent food poisoning / food contamination, one pair of apron and head gear (cap) has been provided to Cook cum Helpers during 2018-19. But, one pair of apron and cap is not sufficient for continuing using in one week. So, it is proposed to provide one pair of apron and cap to all Cook cum Helpers [1,18,998] during 2019-20.

**[6] Attendance Register, Stock Register and Accounts Maintenance Register:**

During 2016-17, "Attendance Register for children", "Stock Register for rice" and "Accounts Maintenance Register" (three registers each school) were provided to schools for keeping records of children, rice and fund for coming two years i.e. 2017-18 & 2018-19.

So, it is proposed to provide Attendance Register for children, Stock Register for rice and Accounts Maintenance Register (three registers each school) during 2019-20.

**[7] Eating Plate & Drinking Water Glass:**

Children bring eating plate from their home for taking MDM in school. State Govt. do not provided eating plate under MDM Scheme. The Hon'ble Supreme Court observed the matter and asked to reply on the matter. In compliance of Hon'ble Supreme Court observation, it is replied that eating plate for taking MDM and drinking water glass will be provided to the children in phased manner as the financial involvement is too high to provide 40,39,622 children in 33 districts.

So, it is proposed to provide eating plate & drinking water glass to the children in two (2) aspirational districts (Hailakandi and Udalguri). The other aspirational districts will also be taken up subject to availability of fund.

**[8] Administrative cost for purchase of hand washing soap & detergent powder:**

Every year, fund @Rs.450/- per school have been provided for purchase of hand washing soap for using before and after taking MDM & detergent powder for washing the kitchen devices as administrative cost. During 2019-20, it is proposed to continue the above activity.

**[9] Durable Floor Mounted Garbage Bin:**

Health is a basic right of every child also it is a necessary condition for learning. Enrolment, retention, concentration and learning outcomes in the classroom have a strong linkage with a child's physical and emotional health. Maintaining cleanliness in the school classroom, campus and surroundings is critical for student's health. According to some studies, there is a correlation between the cleanliness of a school's facilities and students' academic achievements. Lack of cleanliness becomes a distraction from study. The student wants orderly spotlessness in and around their classrooms and it facilitates a positive learning environment. Unattended garbage lying in the campus, dirty classroom can spread allergens and germs, increase bug infestations, and increase stress. When a student's health is impacted, it also impacts the ability to learn — especially if bad health leads to missed school days. A clean facility is paramount to the success of a school. Moreover, school is an ideal place for inculcation of healthy habits and correct attitudes towards health.

Considering this background, it is proposed to install durable floor mounted garbage bins in each of the Primary and Upper Primary schools in phased manner [Kamrup (Metro) and Kamrup districts]. This will encourage the students and teachers to continue this good practice and even inspire those schools which have yet to take up these activities to initiate this process in their school.

**[10] Social Audit:**

To uphold transparency, accountability and participation of community in implementation of MDMS, to ensure that the works are done as per norms and errors are rectified, if any during implementation of the activity and to maintain a cordial relation between community and school, social audit is utmost necessary.

As like last year, this year also, it is proposed to carry out Social Audit in all Govt. & Provincialised schools in convergence with Samagra Shiksha, Assam.



### **[11] Third Party Evaluation of MDM Scheme:**

MDM is one of the incentives under the entitlement of RTE Act, 2009. The State has been implementing the scheme as per norms of Govt. of India. For smooth implementation of the scheme, various initiatives like training of cook cum helpers, fund transfer through bank (RTGS), preparation of weekly food chart, community involvement etc. have been taken. Regular and proper implementation is very essential to meet the objectives of the scheme.

So, it is proposed to conduct third party evaluation study in seven (07) aspirational districts viz. Baksa, Barpeta, Darrang, Dhubri, Goalpara, Hailakandi and Udalguri covering 1160 schools (40 schools (Govt. & Provincialised) per block, total 29 blocks). Selection of the schools was proposed to be done to ensure proportionate representation of LP, UP, ME, MV, Composite High & Higher Secondary schools. Moreover, the selected school of each district is proposed to be from rural & urban areas, hard to reach areas (char/riverine/hilly/border) etc.

The study is proposed to be conducted with the following objectives:

5. To study the effectiveness of the service mechanism of the scheme.
6. To study the effect of the scheme on attendance and retention of children.
7. To identify the specific issues and challenges in effective implementation of the scheme.
8. To suggest viable & practical measures for better implementation.

### **[12] Cooking Competition:**

MHRD, Govt. of India requested all States/UTs to conduct cooking competition among the schools. In this regard, three (03) randomly selected clusters of each district is proposed to be taken up for conducting Cooking Competition. It may be mentioned that after CRC remapping, there will be a total 4609 CRCs in the 33 districts across the State. Average 12 schools will be under one cluster. So, a total of 1,188 schools will be under 99 clusters in 33 districts.

District Resource Group (DRG) comprising DIET Principal and Lecturer will be involved as Judge in every district. Three (03) DRG members will visit each school of the three selected clusters of the concerned districts. A convenient date in a week will be fixed for conducting Cooking Competition and this date will be fixed for all 12 schools of the cluster.

Menu will be the same of the proposed date as suggested in the “**Weekly Menu of the Mid Day Meal Scheme**”. No other item(s) will be considered for this Cooking Competition.

A lump sum amount of Rs.300/- per head per visit will be provided to the DRG members as TA and for which, an amount of **Rs.10,69,200/-** will be required as TA for DRG members for conducting Cooking Competition in 1,188 schools of 99 cluster in 33 districts.

Cash prize will be provided to the Cook cum Helpers of the concerned schools as follows:

1. First Prize : Rs.3,000/-
2. Second Prize : Rs.2,000/-
3. Third Prize : Rs.500/-

Hence, an amount of Rs.5,500/- will be required for one district for cash prize. Therefore, for all 33 districts, a total of **Rs.1,81,500/-** will be required for cash prize. The entire amount of **Rs.12,50,700/-** [TA for DRG members and Cash Prize] for the proposed programme will be met from MME component of AWP&B, 2019-20.

The modality of the entire programme will be finalized and to be carried out in consultation with district officials and DRG members.

<b>Proposed Activity-wise Plan of Action under MME Component of AWP&amp;B, 2019-20 under National Programme of Mid Day Meal in Schools</b>		
<i>[Rs. in lakh]</i>		
<b>#</b>	<b>Activity</b>	<b>Activity wise allocation of fund</b>
<b>A</b>	<b>School Level</b>	
1	Mid-Day-Meal Calendar – (as IEC material) to each schools	80.00
2	Campaign through audio–visual (Jingle) on various issues on MDMS viz. MDM Rules, 2015, Tithi Bhojan, Food Safety & Hygiene, Roles of SMCs/Stakeholders, advertisement on Sampriti Bhojan etc., installation of hoarding on Sampriti Bhojan and MDM Rules, 2015 at prominent places in the districts for awareness generation among the masses	20.00
3	Providing MDM Logo in every school [@Rs.500/- to 15153 schools (schools of 07 aspirational districts )	75.77
5	Providing Apron and Head Gear to Cook cum Helpers	150.00
6	Providing Attendance Register, Stock Register for Rice and Accounts Maintenance Register(Three registers in each school) [@Rs.130/- to 57,101 schools]	74.23
7	Providing eating plate and drinking water glass to the students (in compliance of Hon'ble Supreme Court observation). [@Rs.100/- to 209783 children of 02 aspirational districts viz. Udalguri & Hailakandi]	209.78
8	Providing Garbage Bin to schools [Kamrup (Metro) and Kamrup districts] [@Rs.2000/- to 3476 schools]	69.52
9	Administrative cost for purchase of hand washing soap & detergent @ Rs.450.00 for 57,101 schools	256.95
10	Social Audit in convergence with Samagra Shiksha	50.00
11	Third Party Evaluation Study in seven (07) Aspirational districts	45.00
12	Implementation of Automated Reporting and Monitoring System (ARMS)	10.00
13	Cooking Competition	10.00
	<b>Sub Total</b>	<b>1051.25</b>
<b>B</b>	<b>Management, Supervision/ Training /External / Internal Monitoring Evaluation</b>	
14	Remuneration of MDM Staff & Resource Person & implementation of CPF	301.42
15	TA, Office contingency, stationery items and computer consumables, meetings, computer & furniture, hiring of vehicle etc.	107.52
16	Expenditure for data entry into MIS Web Portal (Men days, printing of form etc.)	15.00
	<b>Sub Total</b>	<b>423.94</b>
	<b>Grand Total (A+B)</b>	<b>1475.19</b>

## **Non-Recurring Proposal for 2019-20:**

### **[1] Kitchen Devices for 20 Model Schools [Non-Recurring]:**

A total of 20 Model Schools have been operationalised across the State. Out of 20 Model Schools, academic session was started in 14 Model Schools from 2015-16, 1 Model School in 2016-17 and 4 Model Schools in 2018-19.

Kitchen cum Stores have been provided to 14 Model Schools and MDM has been implemented smoothly. Remaining 6 Model Schools, Kitchen cum Stores will be provided during 2019-20. But, school authority has been implemented MDM in 6 Model Schools in temporary kitchen shed.

There is a provision under Mid Day Meal Scheme to provide kitchen devices to the schools. Earlier, Govt. of India has provided Rs.5000/- as lump sum for procurement/replacement of kitchen devices. But this year, Govt. of India has revised the rates for procurement/replacement of kitchen devices @10,000/- to Rs.25,000/- on sharing basis as per existing sharing pattern (90:10), linked to enrolment as follows:

<b>Enrolment (No. of children)</b>	<b>Unit cost (in Rs.)</b>
Up to 50	Rs.10,000/-
51-150	Rs.15,000/-
151-250	Rs.20,000/-
251 & above	Rs.25,000/-

As we have not provided kitchen devices to 20 Model Schools till date, so, in this financial year, kitchen device is proposed to be provided to 20 Model Schools as per norms and the proposal is kept in AWP&B, 2019-20:

<b>Enrolment (No. of children)</b>	<b>No. of Model School</b>	<b>Central Share (90%) [in Rs.]</b>	<b>State Share (10%) [in Rs.]</b>	<b>Total [in Rs.]</b>
Up to 50	0	-	-	-
51-150	0	-	-	-
151-250	6	1,08,000/-	12,000/-	1,20,000/-
251 & above	14	3,15,000/-	35,000/-	3,50,000/-
<b>Total</b>	<b>20</b>	<b>4,23,000/-</b>	<b>47,000/-</b>	<b>4,70,000/-</b>

### **[2] Repairing of Kitchen cum Stores [Non-Recurring]:**

Govt. of India has decided to provide fund for repairing of kitchen cum stores constructed 10 years ago i.e. prior to financial year 2008-09 and asked to submit a proposal for repairing of kitchen cum stores @Rs.10,000/- per school on sharing basis as per existing sharing pattern (90:10).

Govt. of India had sanctioned 30,068 kitchen cum stores during the financial year 2006-07, out of which 28,968 kitchen cum stores were constructed by Assam State Housing Board and Housefeed and remaining 1100 units @Rs.60,000/- could not be constructed by the agencies due to escalation of price of raw materials, labour cost etc.

So, it is proposed to repair 28,968 units of kitchen cum stores @Rs.10,000/ per unit and the proposal is kept in AWP&B, 2019-20 as per following details:

<b>No. of kitchen cum stores constructed prior to F.Y. 2008-09</b>	<b>Central Share (90%) [in Rs.]</b>	<b>State Share (10%) [in Rs.]</b>	<b>Total [in Rs.]</b>
28,968	26,07,12,000/-	2,89,68,000/	28,96,80,000/-

### [3] Utilisation of Flexi Fund – 5% of Annual Work Plan & Budget:

Central Government has approved to give flexibility to the States/UTs to utilise, with prior approval of MHRD, 5% of their Annual Work Plan & Budget for new interventions, provided State/UT are not included under any other Central or State Schemes and there is no overlapping of activities and requested State/UT to make necessary budget provision for releasing their corresponding matching share and submit their proposals for new interventions proposed to be undertaken with 5% flexibility.

It is stated that the proposed activities to be undertaken under through the 5% flexi fund shall not overlap the activities under approved components of the MDM scheme. The proposed activities should aim at improving the effectiveness of the scheme by addressing the gaps, if any, such as supplementary nutrition over and above the existing provisions (including additional items), setting up of kitchen gardens in schools etc.

It is also stated that the 5% flexibility is not proposed for creation of capita assets such as construction of kitchen cum stores, dining hall, procurement/replacement of kitchen devices etc.

Considering the above, it is proposed to carry out the following activities under 5% flexi fund:

1. Providing assistance to the schools for development of kitchen garden.
2. Providing egg to the children reading in class I to VIII for increasing nutritional value.

A detail budget estimate is given below:

(Rs. in Lakh)

#	Particulars	Amount	Remarks
1	Total Proposed Budget Amount (Central & State) during 2019-20.	Rs. 61721.37	
2	5% Flexi fund of Total Proposed Budget Amount during 2019-20.	Rs.3086.07	Rs.2777.463 [Central Share] and Rs.308.607 [State Share]
3	Fund required for development of Kitchen Garden @ Rs.2000/- per school for 56,910 schools.	Rs.1138.20	It is proposed to develop kitchen garden in Govt. & Govt. aided schools, providing amount of Rs.2,000/- per school to SMC. The expenditure will be incurred for construction of fencing in the kitchen garden, purchase of seed, vegetable plant, tools, watering jug etc. The fund will be provided to the schools and concerned SMC will monitor the same.
5	Fund required for purchase of Egg or food of similar nutritious value @ Rs.6/- per head (approx.) for 40,51,337 students per week for 8 weeks.	Rs.1947.87	For increasing nutritional value to the children reading in class I to VIII, it is proposed to provide 01 (one) egg per child per week for 8 weeks. The fund will be provided to the schools and concerned SMC will monitor the same.

**Fact sheet for requirement of funds & food grains as proposed in AWP&B, 2019-20:**

<b>I. Recurring Assistance:</b>		<b>(Rs. In Lakh)</b>
<b>A. Lower Primary Stage</b>		
Requirement of Food Grains ( In MT)	<b>57069.768 MT</b>	
Requirement of Cost of Food Grains	1712.09	
Requirement of Cooking cost ( central share)	22314.28	
Requirement of Cooking cost ( State share)	2511.07	
Transportation Cost	776.15	
Honorarium to Cook cum helpers (Central share)	7694.91	
Honorarium to Cook cum helpers (State share)	854.99	
MME	958.83	
<b>Total (Central Share)</b>		<b>33456.26</b>
<b>Total (State Share)</b>		<b>3366.06</b>
<b>Grand Total (Central + State Share)</b>		<b>36822.32</b>
<b>B. Upper Primary Stage &amp; NCLP</b>		
Requirement of Food Grains ( In MT)	<b>44038.504 MT</b>	
Requirement of Cost of Food Grains	1321.16	
Requirement of cooking cost ( Central share)	17204.37	
Requirement of cooking cost ( State share)	1908.34	
Transportation Cost	598.92	
Honorarium to Cook cum helpers (Central share)	3014.91	
Honorarium to Cook cum helpers (State share)	334.99	
MME	516.36	
<b>Total (Central Share)</b>		<b>22655.72</b>
<b>Total (State Share)</b>		<b>2243.33</b>
<b>Grand Total (Central + State Share)</b>		<b>24899.05</b>
<b>C. Total requirement for LP &amp; UP (Central Share)</b>		<b>56111.98</b>
<b>D. Total requirement for LP &amp; UP (State Share)</b>		<b>5609.39</b>
<b>E. ( C+D) grand total (Central &amp; State Share) :</b>		<b>61721.37</b>
<b>II. Non-Recurring</b>		
<b>F. Kitchen Devices</b>		
Central Share (90%)		4.23
Minimum mandatory State Share (10%)		0.47
<b>Total</b>		<b>4.70</b>
<b>G. Repairing of kitchen-cum-stores (@Rs.10,000/- per school to 28,968 schools )</b>		
Central Share (90%)		2607.12
Minimum mandatory State Share (10%)		289.68
<b>Total</b>		<b>2896.80</b>
<b>Non-Recurring Total (Central share)</b>		<b>2611.35</b>
<b>Non-Recurring Total (State share)</b>		<b>290.15</b>
<b>H = (F+G) Grand Total (Central + State Share)</b>		<b>2901.50</b>
<b>III. Flexi Fund (5% of 61721.37 lakh) = Rs. 3086.07 lakh</b>		
Central share (90%)		2777.46
State share (10%)		308.61
<b>I. Grand Total (Central + State Share)</b>		<b>3086.07</b>
<b>Grand Total (Recurring [E] + Non-Recurring [H] + Flexi Fund [I] )</b>		<b>67708.94</b>

----- XXXX-----