



**National Programme  
of  
Mid Day Meal in Schools  
(MDMS)  
Annual Work Plan & Budget**

**2019-20**

Name of the State/UT

**Maharashtra**

# Mid Day Meal Programme

## Annual Work Plan and Budget 2019-20

---

### 1. Introduction:

#### 1.1 Brief history

Malnutrition was widely prevalent in India among growing children. Nutritional deficiencies and their incidences among children of school going age group cannot be neglected. Malnutrition not only gives rise to morbidity and mortality, but also prevents a child from developing in a fully functional adult. It adversely affects education in the following ways;

- i) A malnourished child is less likely to attend school regularly.
- ii) Even if such a child does attend school, he/she finds it difficult to concentrate on and participate in teaching-learning activities well enough. He / She therefore, tends to drop out inter alia, because of the inability to cope up with.
- iii) Even if the child does not actually drop out, his attainment levels tend to be low.

Programme of providing Mid-Day Meal in Schools is designed to help UEE in the following ways:

- i) By improving enrolment and regularity of attendance.
- ii) By reducing drop-out and
- iii) By improving children's level of learning and self-esteem.

National Programme of Nutritional Support to Primary Education (commonly known as the Mid-Day Meal Scheme) was launched as a Centrally-Sponsored Scheme on 15th August, 1995. Its objective was to boost Universalisation of Primary Education by increasing enrolment, retention and attendance and simultaneously impacting on nutrition of students in primary classes.

It is being implemented in Maharashtra since 1995-96 onwards. However, the nature of scheme was changed in the right decision of Hon. Supreme Court in Writ Petition No. 196/2001, wherein instead of dry rice the cooked meal was to be given to children on all

school days. In 2002, the scheme was implemented in 15 tribal districts of Maharashtra; however, the scope of implementation was extended to all districts of Maharashtra in January, 2003. The scheme implemented for children in Std I to V in Government schools, schools run by local bodies, Government aided private schools and students enrolled in Education Guarantee Scheme Centre i.e. Vastishalas and Alternative and innovative Education Centre i.e. Mahatma Phule Education Guarantee Scheme Centers.

As per Government of India Guidelines, Mid-day Meal Scheme is extended by Govt. of Maharashtra to cover children in upper primary (VI-VIII) classes in 43 educationally backward blocks in 10 districts of Maharashtra State from 1st January 2008.

Now this scheme is being implemented all over Maharashtra state from September, 08 and onwards.

## 1.2 Management structure

Management Structure for implementation of the Mid Day Meal Scheme at State, District, Block and School level is as follows :

### 1. Management Structure At State Level

**Hon'ble Education Minister**

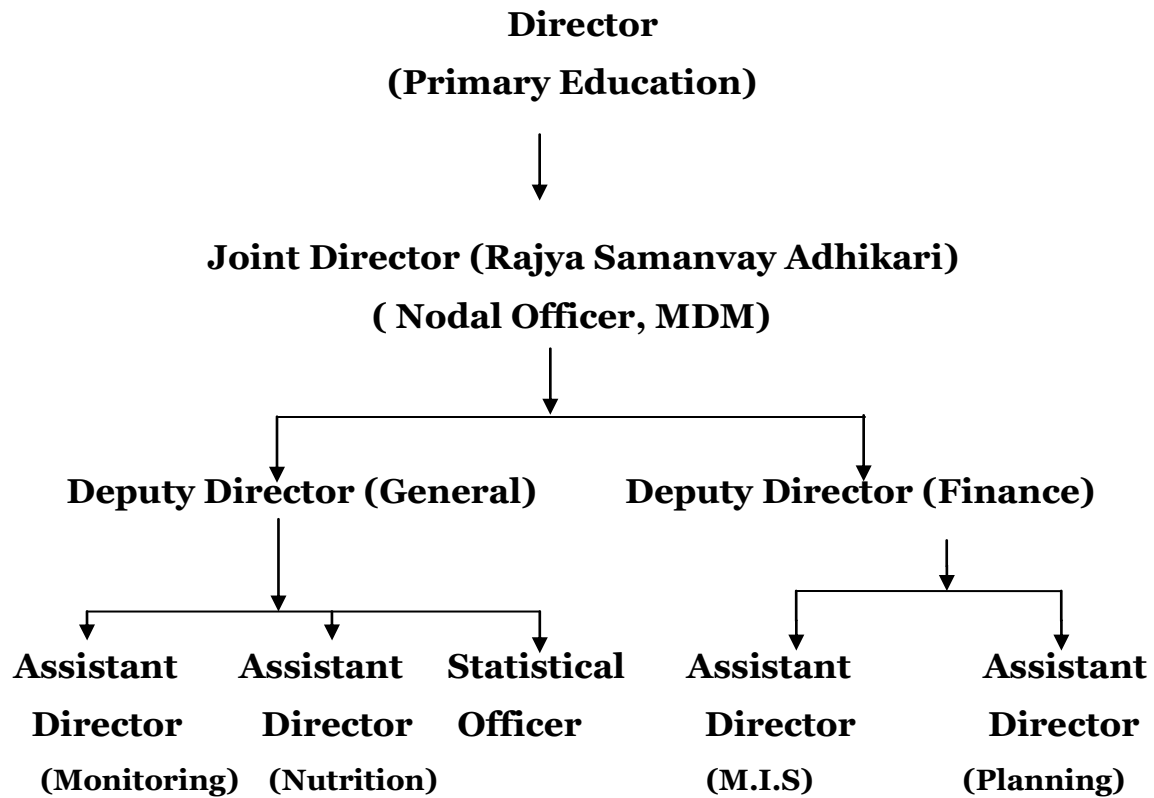


**Hon'ble Additional Chief Secretary  
(School Education & Sports Dept)**

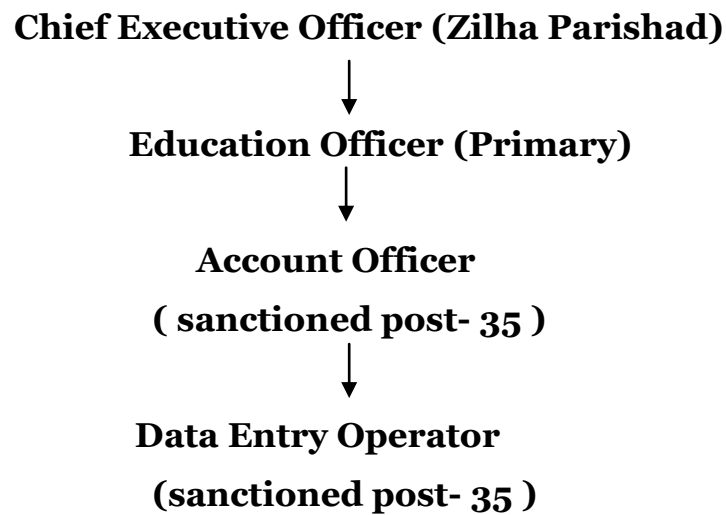


**Hon'ble Commissioner  
( Education Dept)**

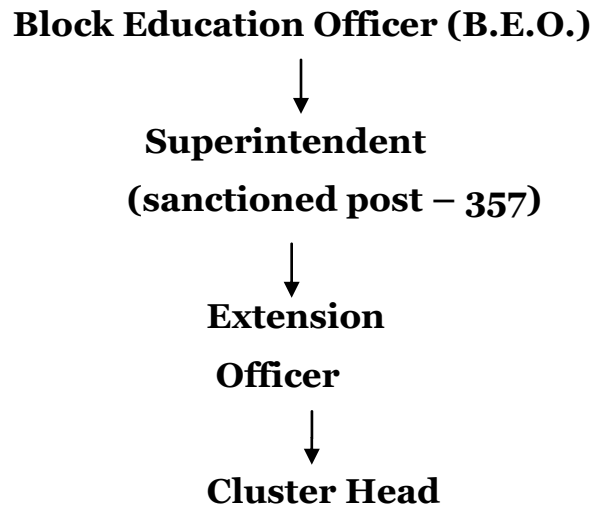




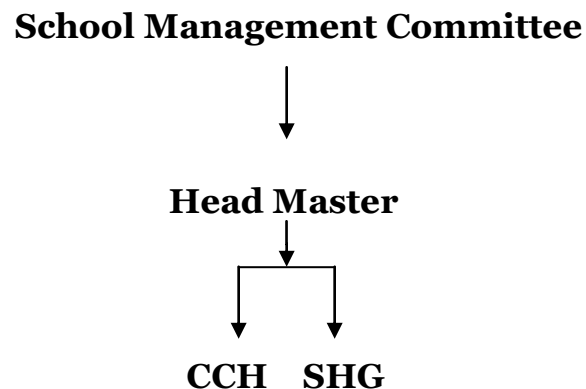
## **2. Management Structure At District Level (for MDM)**



### **3. Management Structure At Block Level**



### **4. Management Structure At School Level**



At school level, mother volunteers, school management committee members and inspecting staff of Education department are made responsible for supervision and monitoring of MDM.

### **1.3 Process of Plan Formulation at State and District level.**

At District level Education Officer is a Nodal Officer for MDMs and Block Education Officer and Superintendent is a co-ordinating Officer at Block level. As per PAB schedule received by Govt. of India, Directorate of primary Education arranged workshop regarding Annual Work Plan and Budget 2019-20 on 26<sup>th</sup> April 2019 for District coordinating Officers. After that State level workshop, District level officials arranged District level workshop on later. Superintendents (M.D.M.) collected necessary information from Cluster Heads (Kendrapramukh), cluster head collected information from Schools for Annual Work Plan and Budget 2019-20 and district level officers prepared district plan and submitted district level plans to state on 02<sup>nd</sup> to 09<sup>th</sup> May 2019.

## **2. Description and assessment of the programme implemented in the current year (2018-19) and proposal for next year (2019-20) with reference to:**

### **2.1 Regularity and wholesomeness of mid - day meals served to children; interruptions if any and the reasons therefore problem areas for regular serving of meals and action taken to avoid Interruptions in future.**

In Every School Mid-Day meal (100 gms of rice for Std I to V & 150gms of rice for Std VI to VIII) is being given regularly to eligible school children, if therewere any interruptions supply of rice and condiments by supplying agencies and in some case due to absence of cook cum helper . Instructions for keeping Buffer stock are given to District officials. In exceptional cases open market purchase permission will be given to such schools are given by district officials.

### **2.2 System for cooking, serving and supervising mid-day meals in the schools**

School Management Committee have authority to appoint SHG for cooking MDM in schools, centralized kitchens supply MDM to school. Cook cum helper cooked the food and served hot cooked meal to students. Head Master, SMC chairman and members,

Cluster Head, Education Extension Officer, Superintendent (MDM), Block Education Officer are supervising the scheme while made visit to schools.

## 2.3 Details about weekly Menu.

### 2.3.1 Weekly Menu - Day wise

Turdal, Mugdal, Masurdal, Watana, Mug, Matki, Chawali, Chana etc. pulses and condiments are supplied to schools for preparing meals. C.E.O. of Zilla Parishad decided weekly menu with considering local requirement.

#### Menu Chart -

1. Mugdal Khichadi
2. Masurdal Khichadi
3. Varan/Aamti/Sambar
4. VatanaUsal
5. Mug Usal
6. MatkiUsal
7. ChawaliUsal
8. ChanaUsal



### 2.3.2 Additional Food items provided (fruits/milk/any other items), if any from State/UT resources. Frequency of their serving along with per unit cost per day.

Supplementary food item likes groundnuts, chikki, Rajgiraladu, dates, Eggs, almonds, fruits etc. are provided once in a week within the limit of existing cooking cost. State does not provide any additional funds for these items.



**2.3.3 Usage of Double Fortified Salt and Fortified Edible Oil; their availability and constraints, if any, for procuring these items.**

Double fortified Iodized Salt and fortified Edible Oil is also used for cooking.



**2.3.4 At what level menu is being decided / fixed**

At district level Chief Executive Officer of Zilla Parishad decided the menu considering local taste.

**2.3.5 Provision of local variation in the menu, Inclusion of locally available ingredients/items in the menu as per the liking/taste of the children**

In Maharashtra State district wise weekly menu decided with considering to local taste.

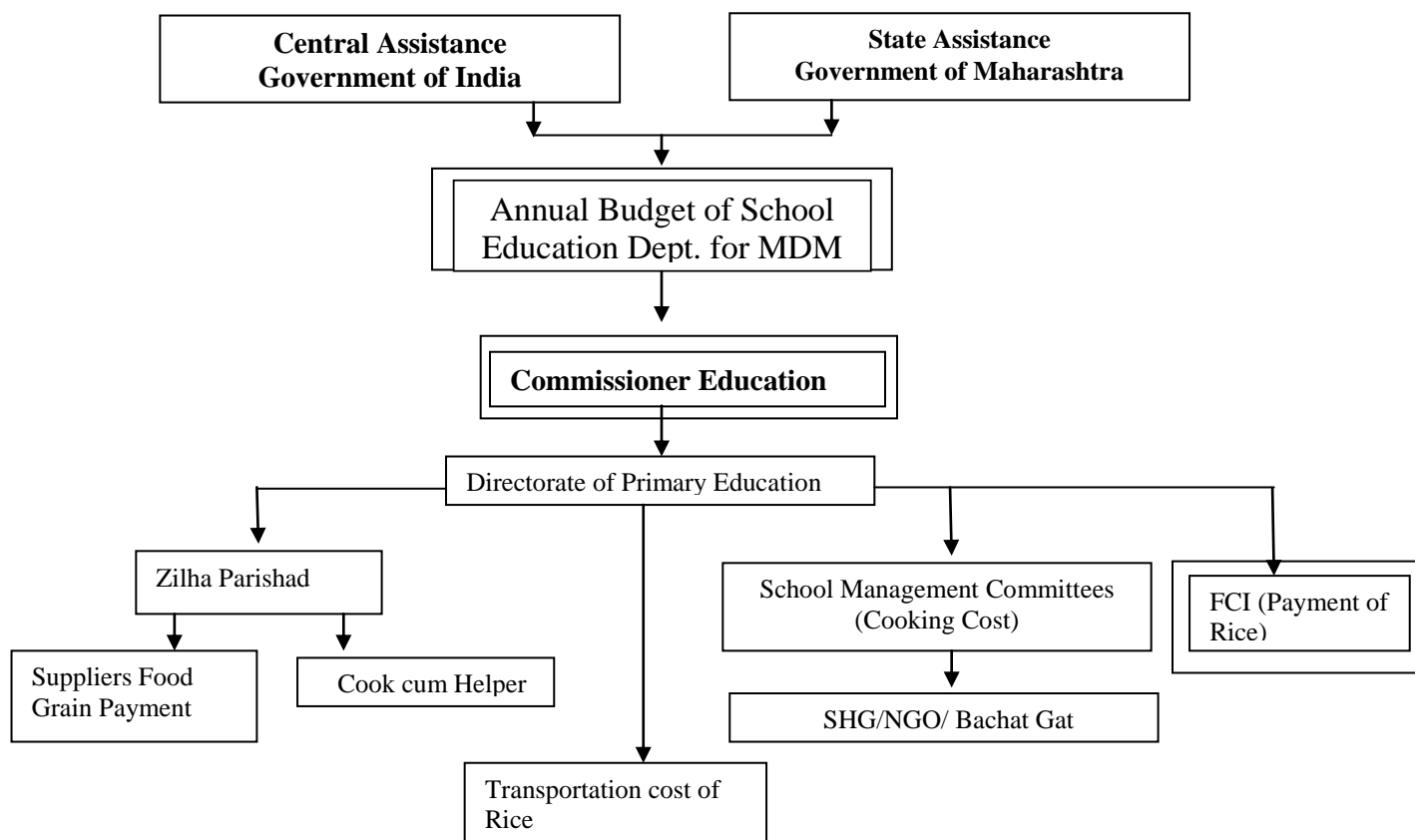
**2.3.6 Time of serving meal.**

Mid day meal is served during lunch break – during 9.30 a.m. to 10.00 am in morning schools and 2.00 pm to 2.30 pm in 2<sup>nd</sup> shift schools.



**2.4 Fund Flow Mechanism - System for release of funds (Central share and State share).**

**2.4.1 Existing mechanism for release of funds up to school/ implementing agency levels.**



**2.4.2 Mode of release of funds at different levels**

All funds are released through online mode by RTGS.

**2.4.3 Dates when the fund were released to State Authority / Directorate / District / Block / Gram Panchayat and finally to the Cooking Agency / School.**

Sr.No.	Received by State	Release by State Directorate	Distribute to District - School
1	27.04.2018	27.04.2018	07.06.2018
2	26.09.2018	26.09.2018	16.08.2018
3	03.01.219	03.01.2019	05.09.2018
4		31.03.2019	17.10.2018
5			05.11.2018
6			15.02.2018
7			30.03.2019

- Cook cum helper honorarium releases after every two months.

#### **2.4.4 Reasons for delay in release of funds at different levels.**

No delay occurred, in release funds of cooking cost, due to development process of distribution of grants directly from directorate to school level. After that every month state distributes cooking cost funds to schools regularly.

#### **2.4.5 In case of delay in release of funds from State/ Districts, how the scheme has been implemented by schools/ implementing agencies.**

If there is delay as per GR dated 2<sup>nd</sup> Feb. 2016, school has utilized other grants which are available at school account for smooth functioning of Mid Day Meal Scheme.

#### **2.4.6 Initiatives taken by the State for pre-positioning of funds with the implementing agencies in the beginning of the year, like creation of corpus funds, adoption of green channel scheme, advance release of State share etc.**

State has developed MDM portal for regular positioning of funds. There is no provision regarding advance release from State to school. But school have been permitted to utilize other grants for MDM vide GR dated 2<sup>nd</sup> Feb. 2016.

## **2.5 Food grains management**

#### **2.5.1 Time lines for lifting of food grain from FCI Depot- District wise lifting calendar of food grain.**

Rice is lifted from FCI godown by the designated agency appointed through e\_tendering process. 2 months advance rice is lifted from FCI at one time as per demand from schools.

### Food grain Lifting and supply calendar

<b>Sr. No.</b>	<b>Lifting and supply period</b>	<b>Consumption period</b>
1	5 <sup>th</sup> June – 15 <sup>th</sup> June	June - July
2	5 <sup>th</sup> July-5 <sup>th</sup> August	August-September
3	5 <sup>th</sup> September-5 <sup>th</sup> October	October - November
4	5 <sup>th</sup> November-5 <sup>th</sup> December	December-January
5	5 <sup>th</sup> January- 5 <sup>th</sup> February	February-March

- Lifting calendar schedule circulated to all Education Officers and instructions are given to keep the buffer stock of 20 days.

#### 2.5.2 System for ensuring lifting of FAQ food grains (Joint inspections at the time of lifting etc.).

At the time of lifting rice from FCI go-down, district Education Officer's representative, Transporter and FCI Quality control department tested the samples and after verification of samples, rice is lifted from FCI go-down. Lifting calendar is given to all Education Officer and instructions are already given to keep the buffer stock for at least 20 days.

#### 2.5.3 **Is there any incident when FAQ food grain was not provided by FCI. If so, the action taken by the State/District to get such food grain replaced with FAQ food grain. How the food grain of FAQ was provided to implementing agencies till replacement of inferior quality of food grain from FCI was arranged.**

No such type of complaints received by this office regarding FAQ food grains provided by FCI.

#### 2.5.4 **System for transportation and distribution of food grains**

Rice is lifted and transported by appointed supplier and distributed at doorstep of every school, pulses and condiments are purchased and provided to schools by

the same agency. Stock Register is maintained at the school level, that showing details about the quantity of rice received and consumed every day.

The storage of food grains made at schools only. If there is delay in supply by the appointed agency, in this period school can take rice, pulses and condiments from other nearby school if there is no availability of material then school can purchase from open market and cost of that purchase will be deducted from supplier bill.

**2.5.5 Whether unspent balance of food grains with the schools is adjusted from the allocation of the respective implementing agencies (Schools /SHGs / Centralized Kitchens). Number of implementing agencies receiving food grains at doorstep.**

Rice is lifted form FCI by the agency appointed through tendering process and other condiments are also provided to schools by the same agency. Register is maintained at the school level showing details about the quantity of rice received and used every day for placing next order, balance stock is considered. 86547 schools are received food grains at door step.

**2.5.6 Storage facility at different levels in the State/District/Blocks/Implementing agencies after lifting of food grains from FCI depot.**

After lifting Rice from FCI go-down it supplied at directly to schools with all pulses and condiments. The storage of food grains is made at school level with the help of storage bins.

**2.5.7 System of fortification of food grains and their costing and logistics arrangement.**

In Maharashtra, state supplied double fortified Salt and Fortified Edible Oil while supplying Rice at school level.

**2.5.8 Challenges faced and plan to overcome them.**

In current situation quantity of rice consumed per child is 100gm and 150 gm each in Primary and Upper Primary respectively. Most of time , some children not able to consume total quantity of cooked meal. Hence, it is our request to cut off the quantity of rice (per child per day).

Whatever variation comes between standard rice and cut off rice, we supplied additional items made with use of Millets and Rice.

## **2.6 Payment of cost of food grains to FCI.**

### **2.6.1 System for payment of cost of food grains to FCI; whether payments made at district level or State level**

The payment to FCI is made at State level. FCI raised the bills towards lifted food grains to district, which in turn verified the same and forwarded to the Directorate for making payment to FCI. After scrutiny payment is made to FCI from Directorate level.

### **2.6.2 Status of pending bills of FCI of the previous year(s) and the reasons for pendency.**

All bills submit to Directorate were cleared. There is no pendency for previous years

### **2.6.3 Timelines for liquidating the pending bills of previous year(s).**

There is no pendency for previous year hence it is not required.

### **2.6.4 Whether meetings are held regularly in the last week of the month by the District Nodal Officers with FCI as per guidelines dated 10.02.2010 to resolve the issues relating to lifting, quality of food grains and payment of bills.**

10 meetings conducted with FCI Officials in the current year at district level. There are no such issues with the food grains and FCI.

### **2.6.5 Whether the District Nodal Officers are submitting the report of such meeting to State Head quarter by 7<sup>th</sup> of next month.**

Review is taken in state level meeting.

**2.6.6 The process of reconciliation of payment with the concerned offices of FCI.**

Quarterly meetings were arranged regarding this reconciliation of payment.

**2.6.7 Relevant issues regarding payment to FCI.**

There is no relevant issue regarding payment to FCI.

**2.6.8 Whether there is any delay in payment of cost of food grains to FCI. If so, the steps taken to overcome the delay.**

There is no delay in payment to FCI.

**2.7 Cook-cum-helpers**

**2.7.1 Whether the State follows the norms prescribed by MHRD for the engagement of cook-cum-helpers or it has its own norms.**

State has its own norms for the engagement of CCH.

**2.7.2 In case, the State follows different norms, the details of norms followed may be indicated.**

The State Govt. has fixed the norms for honorarium to be paid to cook-cum-helpers as per the different enrolment categories. The same is mentioned below:

**In Rural Area**

Sr.no	Enrollment 1 to 8	Grant approved per month
1	Upto 25 students	Rs.1000/-
2	26 to 199 students	Rs.2000/-
3	200 to 299 students	Rs.3000/-
4	300 to 399 students	Rs.4000/-
5	400 to 499 students	Rs.5000/-
6	500 to 599 students	Rs.6000/-
7	600 to 699 students	Rs.7000/-
8	700 to 799 students	Rs.8000/-

9	800 to 899 students	Rs.9000/-
10	900 and more	Rs.10000/-

**For Urban Area**

Sr.no	Enrollment 1 to 8	Grant approved per month
1	500 students	Rs.2000/-
2	1000 students	Rs.4000/-
3	5000 students	Rs.6000/-
4	10000 students	Rs.8000/-
5	10000 and more students	Rs.10000/-

Total no of approved Cook cum helpers –175336

Total no of engaged cook cum helpers – 167269

**2.7.3 Is there any difference in the number of cook-cum-helpers eligible for engagement as per norms and the CCH actually engaged?**

State has different norms for engagement of cook-cum-helpers in rural and urban area. The schools having very low enrollment have been merged with nearby school, thus there is a difference between PAB approval and actually engaged in schools. All the approved cook-cum-helpers will be engaged during 2019-20.

**2.7.4 System and mode of payment, of honorarium to cook-cum-helpers and implementing agencies viz. NGOs / SHGs / Trust / Centralized kitchens etc.**

Honorarium to cook-cum-helpers is paid directly from district to CCH bank accounts through e-transfer.

**2.7.5 Whether the CCH were paid on monthly basis.**

All CCH are paid their honorarium at two monthly bases.

**2.7.6 Whether there was any instance regarding irregular payment of honorarium to cook-cum-helpers and reason thereof. Measures taken to rectify the problem.**

There is no such instance regarding irregular payment of honorarium to cook-cum-helpers, **and it proposed in the year 2019-20, that the honorarium of cook cum helpers transfer directly Directorate to SMC then after SMC to CCH.**

**2.7.7 Number of cook-cum-helpers having bank accounts,**

All engaged 167269 are having their own bank accounts

**2.7.8 Number of cook-cum-helpers receiving honorarium through their bank accounts,**

All 167269 cook-cum-helpers are receiving their honorarium through their bank accounts.

**2.7.9 Provisions for health check-ups of Cook-cum-Helpers,**

Health check-ups of Cook cum Helper are carried out at nearest District Rural Hospitals or PHC. In every six months it is compulsory that CCH need to submit their medical fitness certificate of health check up to the school.

**2.7.10 Whether cook-cum-helpers are wearing head gears and gloves at the time of cooking of meals.**





Instructions have been issued for keeping the head covered while preparing the meal. In some school cook-cum-helpers used head gears while cooking food and in some schools they used their scarf as head gears at the time of cooking.

**2.7.11 Modalities for apportionment of cook-cum-helpers engaged at school level and working at centralized kitchens, in case of schools being served through centralized kitchens,**

School Management Committees appoints Cook cum helpers as per the enrollment of their respective school. First they publish notice regarding the engagement of CCH. Interested SHG/NGO/Persons, submits their application to schools, after scrutiny and as per their requirement SMC appoint cook-cum-helpers.

Where the centralized kitchen run by NGO/SHG, they appoint CCH as per total enrollment of attached school to their centralized kitchen. The same CCH are working at school level for serving food to students and at centralized kitchen also.

**2.7.12 Mechanisms adopted for the training of cook cum helpers. Total number of trained cook cum helpers engaged in the cooking of MDMs. Details of the training modules; Number of Master Trainers available in the State; Number of trainings organized by the Master Trainers for training cook-cum-helpers.**

In the year 2018-19 , in the month of June and July Account Officer and atleast 2 Superintendent of each districts were trained as a Master trainer at state level. All training programme were arranged by Directorate, Experts from Impact Million Lives Foundation, Mumbai conducted the training session. Afterwards at block level each Master trainers took training of minimum 3 person. Total master trainers at block level are 1071. 54326 CCH are already given training in this regard, and rest CCH's training is proposed in the year 2019-20. Training modules is already developed for this purpose.

**2.7.13 Whether any steps have been taken to enroll cook-cum-helpers under any social security schemes i.e Pradhan Mantri Jan Dhan Yojana, Pradhan Mantri Suraksha Bima Yojana, Pradhan Mantri Jeevan Jyoti Bima Yojana etc. and number of cooks benefitted through the same.**

In the year 2019-20 so many districts are enrolled cook-cum-helpers under Pradhan Mantri Shram Yogi Yojna. As per first information 13607 CCH got the benefit of the same.

**2.8 Procurement and storage of cooking ingredients and condiments**

**2.8.1 System for procuring good quality pulses, vegetables including leafy ones, salt, condiments, oil etc. and other commodities.**

In case of school based kitchen, Separate supplier for each district are appointed for transportation of rice and supply of other ingredients to school, ingredients like pulses, salt, condiments and oil are purchased by these agencies and supplied to schools. In urban area the ingredients are purchased by the cooking agencies. Cooking ingredients and Food grains are generally stored in the kitchen itself.



**2.8.2 Whether pulses are being procured from NAFED or otherwise.**

In 2018-19 Govt. of Maharashtra procured Turdal from Mahafed and provided it to schools for cooking in Mid Day Meal.

**2.8.3 Whether 'First-in: First-out' (FIFO) method has been adopted for using MDM ingredients such as pulses, oil/fats. Condiments salt etc. or not.**

Yes, all schools are adopting FIFO method.

**2.8.4 Arrangements for safe storage of ingredients and condiments in kitchens.**

Some schools use storage bins to storage ingredients and condiments. Rice bags are stored at slightly higher elevations than the ground



**2.8.5 Steps taken to ensure implementation of guidelines dated 13.02.2015 on food safety and hygiene in school level kitchens under Mid-Day Meal Scheme.**

Circular vide letter dated 3<sup>rd</sup> Sep. 2016, regarding guidelines of food safety and to maintain hygiene at school level kitchen was issued by Directorate. Also all supervisory officers are instructed to check in this regard during visit the school.

**2.8.6 Information regarding dissemination of the guidelines up-to school level.**

Banners regarding emergency, precautions, instruction, recipes and MDM logo with duties of SMC provided to each MDM school, it is displayed at prominent place at school .

**2.9 Type of Fuel used for cooking of Mid-Day Meals -LPG, Smokeless Chulha, Fire wood etc.**

**2.9.1 Number of schools using LPG for cooking MDM**

48.52 % schools are using LPG as fuel.



### **2.9.2 Steps taken by State to provide LPG as fuel in MDM in all schools.**

All Collectors of respective district where the LPG % is very poor are informed that, to raise the fund demand for procurement of LPG connections to school, under the head of innovative scheme from District Planning and Development Committee. In 2019-20, planned to take meeting with HP/IOL/BP and other companies for smooth supply of LPG connections to remaining school.

### **2.9.3 Expected date by which LPG would be provided in all schools.**

Upto May 2020.

## **2.10 Kitchen-cum-stores.**

### **2.10.1 Procedure for construction of kitchen-cum-store,**

Responsibility of construction of kitchen sheds sanctioned during 2005-06, 2006-07, 2009-10,2010-11 was of School Management Committee and it was monitored by Maharashtra Prathmik Shikshan Parishad (MPSP) and Funds released under the Mid-day meal programme. 1566 kitchen cum stores completed out of 6000 Kitchen cum stores sanctioned for Private aided schools.



**2.10.2 Whether any standardized model of kitchen cum stores is used for construction.**

Kitchen cum store sanction during 2005-06, 2006-07, 2009-10, 2010-11 and 2013-14 is RCC type and in RCC, there are three type of models as per Plinth Area Norms i.e. A/B/C type of kitchen shed as per school enrolment. Kitchen shed sanctioned during 2008-09 was pre-fabricated .



**2.10.3 Details of the construction agency and role of community in this work.**

Responsibility of getting work completion of RCC type kitchen shed is of SMC and monitored by MPSP.



**2.10.4 Kitchen cum stores constructed through convergence, if any**

- Nil-

**2.10.5 Progress of construction of kitchen-cum-stores and target for the next year.**

Progress of construction of Kitchen-cum-stores

Sr.no	Year of sanctioned	No of work sanctioned	completed	In progress	Yet to Start	surrendered
1	2006-2007	18417	17825	167	0	425
2	2007-2008	87	38	0	49	0
3	2008-2009	38048	32355	0	0	5693
4	2009-2010	1355	1277	0	78	0
5	2010-2011	7876	5440	76	1418	942
6	2011-2012	0	0	0	0	0
7	2012-2013	0	0	0	0	0
8	2013-2014	6000	1566	392	4042	0
9	2015-2016	0	0	0	0	0
10	2016-2017	0	0	0	0	0
	<b>Total</b>	<b>71783</b>	<b>58501</b>	<b>635</b>	<b>5587</b>	<b>7060</b>

**2.10.6 The reasons for slow pace of construction of kitchen cum stores, if applicable.**

Pace is slow, due to non availability of 25 % fund which is compulsory share of private aided school management and at so many places there are issues regarding land.

**2.10.7 How much interest has been earned on the unutilized central assistance lying in the bank account of the State/implementing agencies.**

Interest of Rs. 39.88 crore was earned on the unutilized assistance lying in the bank account, which was already submitted to Govt. of India vide letter dated 27.03.2019.

**2.10.8 Details of the kitchen cum stores constructed in convergence. Details of the agency engaged for the construction of these kitchen cum stores.**

- Nil-

**2.11 Kitchen Devices**

**2.11.1 Procedure of procurement of kitchen devices from funds released under the Mid-Day Meal Programme**

Fund released from Govt. of India towards procurement of kitchen devices was released to state. As per demands of districts, funds transferred to district for procurement of utensils.



### 2.11.2 Status of procurement of kitchen devices

In PAB 2018-19, MHRD sanctioned funds against kitchen devices to state. As per revised norms issued vide letter dated 28<sup>th</sup> Feb. 2019, the state has submitted a revised proposal to MHRD and reply is awaited.

### 2.11.3 Procurement of kitchen devices through convergence or community/CSR

In various schools in Maharashtra, kitchen devices provided by local community and through CSR, but actual data is not available.

### 2.11.4 Availability of eating plates in the schools. Source of procurement of eating plates.



an local bodies schools are having schools, it requires.

## 2.12 Measures taken to rectify

### 2.12.1 Inter-district low and uneven utilization of food grains and cooking cost



There is no uneven utilization of food grains and cooking cost.

**2.12.2 Intra-district mismatch in utilization of food grains and cooking cost.**

There is no intra-district mismatch in utilization of food grains and cooking cost.

**2.12.3 Mismatch of data reported through various sources (QPR, AWP&B, MIS etc)**

Review was taken at the time of QPR submission and make corrections regarding the mismatch data.

**2.13 Quality of food**

**2.13.1 System of Tasting of food by teachers/community. Maintenance of tasting register at school level.**

Every day School Management Committee member / community members/teachers and parents whom were present at the time of serving of MDM, tasted cooked food at each school in Maharashtra and also a food taste register maintained at school.

**2.13.2 Maintenance of roster of parents, community for the presence of at least two parent in the school on each day at the time of serving and tasting of mid day meal.**

Every school maintains register for tasting of meals. Before serving of cooked food to children, teacher, cook cum helper and parents present at that time in school, taste the cooked food and record their remarks in taste register.

**2.13.3 Testing of food sample by any recognized labs for prescribed nutrients and presence of contaminants such as microbe's e-coli. Mechanism to check the temperature of the cooked MDM.**

Total sampled collected	Sample Tested by	Sample found in within	Sample not found as per	Report Awaited
-------------------------	------------------	------------------------	-------------------------	----------------

	LAB	norms	norms	
612	606	580	34	26

**2.13.4 Engagement of / recognized labs for the testing of Meals.**

Mumbai corporation health lab and district government health labs are engaged for testing of meals. It is proposed to form a panel of private NABL accredited lab in 2019-20 for testing of at least 1000 sample per month of cooked meals.

**2.13.5 Details of protocol for testing of Meals, frequency of lifting and testing of samples.**

As per Lab.

**2.13.6 Details of samples taken for testing and the results thereof.**

Total sampled collected	Sample Tested by LAB	Sample found in within norms	Sample not found as per norms	Report Awaited
612	606	580	34	26

**2.13.7 Steps taken to ensure implementation of guidelines issued with regard to quality of food.**

Instruction and training regarding guidelines for quality of food and hygiene given to cook cum helpers, head master and all supervisory officials.

**2.14 Involvement of NGOs / Trusts / Temples / Gurudwara / Jails etc.**

**2.14.1 Modalities for engagement of NGOs / Trusts/ Temples / Gurudwara / Jails etc. for serving of MDM through centralized kitchen.**

NGOs submitted their proposal to concern authority regarding their engagement for MDM through centralized kitchen. After scrutiny concern authority i.e. Zilha Parishad/ Corporations decide if it is allowed or not.

**2.14.2 Whether NGOs / Trusts/ Temples / Gurudwara / Jails etc. are serving meal in rural areas**

No of NGO/ Trusts/ Temples / Gurudwara / Jails etc.	Districts covered	No. of schools covered	No. of children covered
NGO	6	1852	237347

**2.14.3 Maximum distance and time taken for delivery of food from centralized kitchen to schools**

Between 15 to 55 kms and time to be taken for delivery is 20 min. to 1.15 min.

**2.14.4 Measures taken to ensure delivery of hot cooked meals to schools**

Sealed steel containers used to deliver the hot cooked meals to schools



**2.14.5 Responsibility of receiving cooked meals at the schools from the centralized kitchen,**

Head Master and SMC members are responsible for receiving cooked meals at the schools and responsibility of distribution of meal is towards CCH provided by centralized kitchen.

**2.14.6 Whether sealed/insulated containers are used for supply of meals to schools,**

Yes, sealed / insulated containers are used for supply of meals to schools.



**2.14.7 Tentative time of delivery of meals at schools from centralized kitchen.**

Near about 15 minutes to 1 hour 15 minutes.

**2.14.8 Availability of weighing machines for weighing the cooked MDM at school level prepared at centralized kitchen.**

Some schools are having weighing machines. Now it is require to provide weighing machine to school.

**2.14.9 Testing of food samples at centralized kitchens.**

Number of samples		Result (No. of samples)		Remarks
Collected	Tested	Meeting norms	Below norms	
1	2	3	4	5
196	196	162	34	0

**2.14.10 Whether NGOs / Trusts/ Temples / Gurudwara / Jails etc. is receiving grant from other organizations for the mid day meal. If so, the details thereof.**

--

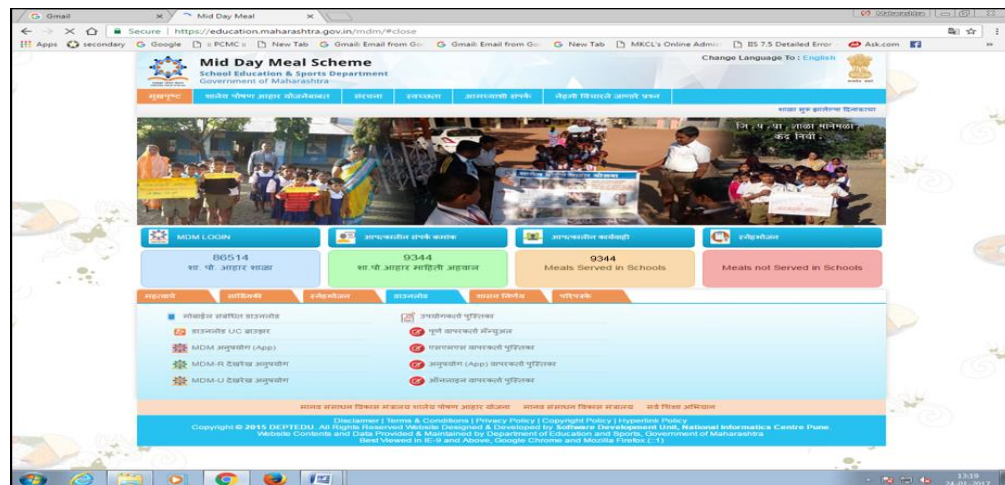
## 2.15 Systems to ensure transparency and accountability in all aspects of programme implementation,

### 2.15.1 Display of logo, entitlement of children and other information at a prominent visible place in school

Flex banners regarding containing MDM logo, emergency, precautions, SMC role supplied to every school and displayed at prominent place in school.



### 2.15.2 Dissemination of information through MDM website



### 2.15.3 Provisions for community monitoring at school level i.e. Mother Roaster, Inspection register,

Feedback registers are available at every school. When supervisory authority inspected or visited the school, they written their feedback in this register.

#### **2.15.4 Tasting of meals by community members,**

SMC members or parents or any other persons present in school at the time of serving of MDM, they tasted the meal and write their feedback regarding taste of meal in the Taste Register.

#### **2.15.5 Conducting Social Audit**

##### **2.15.5.1 Whether Social Audit has been carried out or not**

In year 2018-19, no social audit has been carried out.

##### **2.15.5.2 If no, in 2.15.5.1, reasons thereof.**

--

##### **2.15.5.3 Details of action taken by the State on the findings of Social Audit.**

--

##### **2.15.5.4 Impact of social audit in the schools**

--

##### **2.15.5.5 Action plan for Social Audit during 2019-20.**

In the year 2019-20, social audit will be proposed with the help of Planning Department.

#### **2.16 Capacity building and training for different stakeholders**

##### **2.16.1 Details of the training programme conducted for State level officials, SMC members, school teachers and others stakeholders**

District and block officials are given training regarding AMS, MIS, Aadhar feeding, Food Security, PFMS and other issues regarding MDM





### 2.16.2 Details about Modules used for training, Master Trainers, Venues etc.

In year 2018-19 training modules were developed by Impact Million Lives. Training session was conducted at Directorate in June-18 and July-18. Experts from Impact Million Lives Foundation attend these training sessions. All District Accounts Officer and 2 Superintendent were trained as a Master Trainer.

### 2.16.3 Targets for the next year.

In the year 2019-20, all stakeholders whom engaged at different level, should get proper training of technical as well as administrative issues. All engaged CCH should properly get the training regarding quality of cooking and hygiene

## 2.17 Management Information System at School, Block, District and State level and its details.

### 2.17.1 Procedure followed for data entry into MDM-MIS Web portal

At block level the monthly data should be collected from school and cluster level and Data Entry Operator pasted all school data to MDM – MIS web portal.

### 2.17.2 Level (State/ District/ Block/ School) at which data entry is made

At block level all MDM MIS data entry made by data entry operators

### 2.17.3 Availability of manpower for web based MIS

Data entry operator posts are created for this purpose.

### 2.17.4 Mechanism for ensuring timely data entry and quality of data

Making review time to time regarding ensuring that all districts were complete their MDM MIS data entry within time limit

### 2.17.5 Whether MIS data is being used for monitoring purpose and details thereof.

Yes MDM MIS used for monitoring of performance of scheme and that districts also.

## 2.18 Automated Monitoring System (AMS) at School, Block, District and State level and its details.

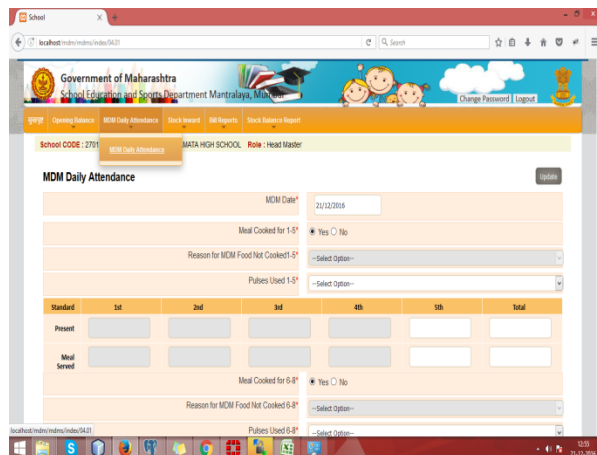
### 2.18.1 Status of implementation of AMS

- In Maharashtra AMS was started in June 2016.

### 2.18.2 Mode of collection of data under AMS (SMS/IVRS/Mobile App/Web enabled)

- AMS data collected through following 3 sources of information. Mobile App, Web portal and SMS

 <b>शालेय शिक्षण व क्रीडा विभाग</b> <b>महाराष्ट्र शासन</b>		
<b>शाळा : 27251100701 (ZPPS KODIT NO. 1)</b> <b>आजचा दिनांक : 08-06-2016</b>		
<b>1 ली ते 5 वी पोषण आहार तयार आहे का : नाही</b> <b>तांदूळ आणि इतर साठा संपला</b>		
वर्ग	हजर संख्या	लाभार्थी संख्या
1 ली	30	0
2 वी	0	0
3 वी	32	0
4 वी	0	0
5 वी	35	0
एकूण	97	0
<b>6 वी ते 8 वी पोषण आहार तयार आहे का : नाही</b>		
वर्ग	हजर संख्या	लाभार्थी संख्या
 <b>महाराष्ट्र शासन</b>		



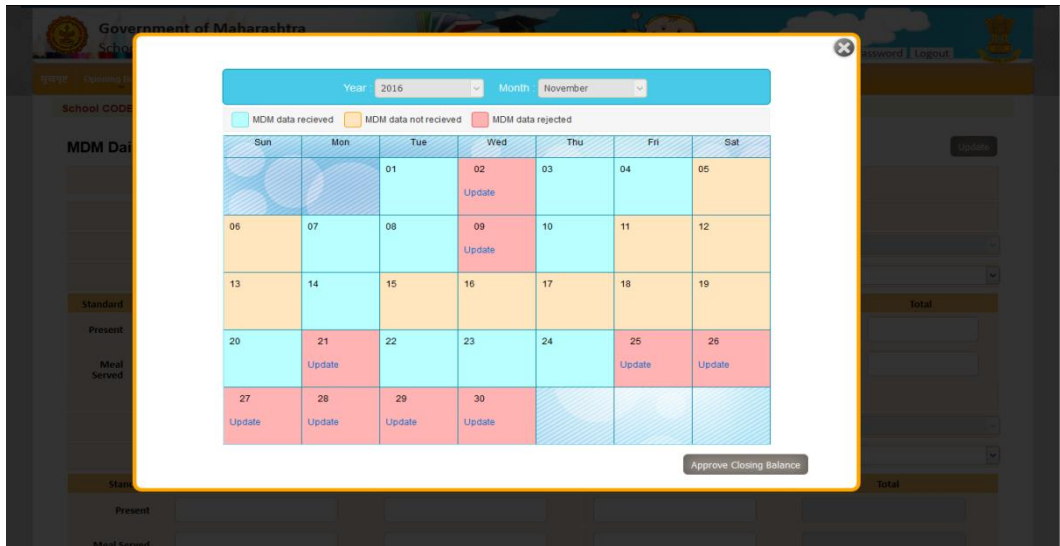
### 2.18.3 Tentative unit cost for collection of data.



- Not applicable

#### 2.18.4 Mechanism for ensuring timely submission of information by schools

- A provision regarding send a notice to school as well as a monthly calendar that displays how many days school had submit the data and how many days are pending. Also Block and district officials take timely review of AMS.



#### 2.18.5 Whether the information under AMS is got validated.

- Yes at the time of school visit supervisory officials cross checks the details of information send by school and actual position in school.

#### 2.18.6 Whether AMS data is being used for monitoring purpose and details thereof.

- Yes, this data used for monitoring purpose. In Maharashtra fuel and vegetable bills generated and paid to all MDM schools, according to this AMS information.

#### 2.18.7 In case, AMS has not been rolled out, the reasons therefore may be indicated along with the time lines by which it would be rolled out.

- If there were any technical issue regarding AMS, in that situation we provide them facility of back dated data entry.

## 2.19 Details of Evaluation studies conducted by State/UT and summary of its findings.

- In Maharashtra state no evaluation studies conducted by State. A Joint Review Mission was conducted by MHRD, Govt. of India in Jalgaon and Satara District in Dec.2018.

## 2.20 Case Studies / Write up on best/ innovative practices followed in the State along with some high resolution photographs of these best / innovative practices.

### a. Cooking competitions



### b. Kitchen Gardens –



In Maharashtra 10856 school already have kitchen gardens and 6411 schools are in progress to set up the their kitchen garden. All vegetables produces from these gardens used in cooking .







### c. Snehbhojan –

At School level specially in rural areas people on various occasions offer sweets, fruits and meals to students. In Maharashtra near by 6885 schools have get benefited of shehbhojan and the amount of this is 1.32 crore. Also other schools have snehbhojan but actual figure of its not available.





**d. Provide milk, fruits and eggs in drought affected district.**

The Maharashtra Government has provided special funds for drought affected district to provide milk, fruits and eggs to students.





**e. Use of double fortified salt and fortified edible oil in cooking.**

As per instructions given by GOI, Maharashtra state uses double fortified salt and fortified edible oil for cooking mid day meal.

**f. Direct grant distribution from Directorate to School.**

According to complaints of delay in grant distribution from district level , Govt. of Maharashtra decided to distribute the fuel and vegetable grant from directorate to direct school account.

**g. Compulsory Health of Cook-cum-helper within every six month.**

All cook-cum-helpers have been compulsorily got health checked by nearest Primary Health Centre within every six month.

**h. Mock drill regarding emergency situations.**

With the help of Health Dept., Fire Brigade mock drill conducted and many schools.

**2.21 Untoward incidents**

**2.21.1 Instances of unhygienic food served, children falling ill**

- No

**2.21.2 Sub-standard supplies,**

- No

**2.21.3 Diversion/ misuse of resources,**

- No

**2.21.4 Social discrimination**

- No

**2.21.5 Action taken and safety measures adopted to avoid recurrence of such incidents. Whether Emergency Plan exists to tackle any untoward incident.**

- No.

**2.22 Status of Rastriya Bal Swasthya Karyakram.**

**2.22.1 Provision of micro- nutrients, de-worming medicine, Iron and Folic acid (WIFS).**

Items	Iron & folic acid tablets	De-worming tablets
No of schools	40197	47788
No of student get benefitted	3459766	4486911

**2.22.2 Distribution of spectacles to children with refractive error,**

- 82267 spectacles were distributed to the children with refractive error

**2.22.3 Recording of height, weight etc.**

- In all 86547 schools teachers were record height and weight of students.

**2.22.4 Number of visits made by the RBSK team for the health check- up of the children (Please ensure to upload at least two photographs of the visit of the medical team in each school on MDM-MIS portal).**

- 76473 visits made by RBSK team for health check-up of the children.

**2.22.5 Present monitoring structure at various levels. Strategy for establishment of monitoring cell at various levels viz. Block, District and State level for effective monitoring of the scheme.**

- At present, at block Cluster head, Education Extension officer, Superintendent and Block Education Officer are monitored the scheme which implemented at school.
- At district level in the guidance of Chief Executive Officer, Education officer and Account Officer (MDM) monitored the scheme and also made visits according to monitoring and inspection purpose. Flying squads arranged for surprise visit to randomly selected schools.
- At State level, for monitoring purpose a special separate Mid Day Meal cell has been set up. State level Flying Squads arranged for surprise visit.

**2.23 Meetings of Steering cum Monitoring Committees at the Block, District and State level**

**2.23.1 Number of meetings held at various level and gist of the issues discussed in the meeting,**

- 39 meeting were held at district level.

**2.23.2 Action taken on the decisions taken during these meetings.**

- Action should be taken by district officials according to the decision taken during the meetings.

-

**2.24 Frequency of meeting of District Level Committee held under the chairmanship of senior most MP of the District to monitor the scheme. Gist of the issues discussed and action taken thereon.**

- Quarterly or Six monthly.



**2.25 Arrangement for official inspections to MDM centers/schools and percentage of schools inspected and summary of findings and remedial measures taken.**

- 6 flying squads arranged for officials inspections to MDM schools in different region and findings of this squads were sent to Govt. of Maharashtra. Best practices found during this visit, should be implemented all over the Maharashtra and issued proper instructions regarding overcome on loopholes found during the visit

**2.26 Details of the Contingency Plan to avoid any untoward incident. Printing of important phone numbers (eg. Primary health center, Hospital, Fire brigade etc) on the walls of school building.**

- All schools are instructed to display the emergency contact number on notice board and kitchen shed also. Banner regarding precautions and measures taken during the emergency provided to all school. School having enrollment more than 500 children. Special contingency plan is prepared for those schools.

**2.27 Grievance Redressal Mechanism**

**2.27.1 Details regarding Grievance Redressal at all levels,**

At state, district and block level – A grievance complaint register was maintained about grievances and their redressal as well as communication with concern authorities, schools at various level.

**2.27.2 Details of complaints received i.e. Nature of complaints etc.**

Total number of complaints received was 74 and the nature is i.e. delay in fund transfer, quality of food supplied, quality of food grain etc.

**2.27.3 Time schedule for disposal of complaints,**

Within 7 to 10 days.

#### 2.27.4 Details of action taken on the complaints.

Complaints received with the state, registered in complaint register and forwarded to concern district for emergency dismissal and take report from such district according this.

Toll free helpline for lodging complaints has been activated.

No. of complaints received under MDMS - 74

Nature of complaint are shortage of rice, spices & condiments due to late supply, complaints regarding quality of food grains, delay in receiving cooking cost and honorarium to CCH.

As soon as the cell receives the complaint, officials contact the Education officer of the particular district and ask them to take necessary action immediately.

#### 2.28 Details regarding Awareness Generation & Information, Education and Communication (IEC) activities and Media campaign, carried out at State/district/block/school level.

Banners have been provided to schools which display information about Midday Meal scheme and instructions about displaying the necessary information in prominent places are given to district officials. With the help of Path-natya, Banners, media advertisement, gathering, public awareness programme and meetings of parents, SMC members has been arranged for this purpose.



**2.29 Overall assessment of the manner in which implementation of the programme is contributing to the programme objectives and an analysis of strengths and weaknesses of the programme implementation.**

The scheme is popular all over the state and particularly in rural and tribal areas. The students are developing better eating habits. The parents are also satisfied with quantity & quality of food. Since the scheme has been totally decentralized, the community participation has increased. Mothers' involvement in supervision of cooked meal is helping children to participate in this programme. This scheme has helped retain children in the school for the entire day. Mid day meal scheme is implemented with full decentralization at village & school level. SMC is fully authorized to implement the mid day meal scheme at school level. Funds are provided to SMC and are authorized to extend.

**2.30 Action Plan for ensuring enrolment of all school children under Aadhaar before the stipulated date.**

Govt. of Maharashtra should take initiative regarding the enrollment of students under Aadhar. 95 % students had already enrolled under Aadhar. Rest of students will be enrolled under Aadhar before Sep. 2019.

**2.31 Contribution by community in the form of Sneh bhojan or any other similar practices in the State/ UT etc.**

As per GR dated 13<sup>th</sup> Aug 2015, SnehBhojan is done in various districts of Maharashtra . In snehbhojan foods like fruits, cooked food provides to students. Programme Of Sneh Bhojan is done all over Maharashtra, specially above mentioned in Kolhapur district.

Govt. of Maharashtra by the resolution dated 13th August, 2015 conveyed all schools to distribute sweet items, non-veg like chickenbiryani, fruits to students on the occasion of birth-days, anniversaries, festivals etc of eminent people of the area like

Sarpanch, SMC presidents, Local Political leaders. Head master should convince them to do so.

In the year 2018-19, Rs. 1.36 crore rupees sneh bhojan was distributed at school.

## 2.32 Kitchen Gardens

2.32.1 Status of availability of kitchen gardens in the schools. (Please furnish school wise details for all districts in the table given at Annexure - W 1.).

In Maharashtra 10856 schools having their own kitchen garden and 4541 schools are in progress to set up them in nearby month. All set up and maintenance made by local students with the help of SMC members.







**2.32.2 Mapping of schools with the corresponding Krishi Vigyan Kendras (KVK)**

- Not any school mapping with the corresponding with KVK.

**2.32.3 Details of the mechanisms adopted for the setting up and Maintenance of kitchen gardens.**

- With the help of local resources and SMC member and CCH.

**2.32.4 Whether the produce of these kitchen gardens is used in MDM.**

- Yes, all produce of these kitchen gardens products used in MDM.



### **2.32.5 Action plan for setting up of kitchen gardens in all schools.**

Even though there is drought in many districts in Maharashtra, so many schools are being implemented kitchen gardens in a good manner. Next year we will make progress in it.

### **2.33 Details of action taken to operationalize the MDM Rules, 2015.**

With the help of various training session and circulars all Education officer has been aware with MDM Rules, 2015 and with the regards to this, they were asked to make awareness regarding the MDM Rules , 2015.

### **2.34 Details of payment of Food Security Allowances and its mechanism.**

There is no interruption in serving meals to students hence there is no question to paid Food Security Allowances to beneficiaries.

### **2.35 Cooking Competition**

#### **2.35.1 Whether cooking competitions have been organized at different levels in 2018-19,**

Yes, in 2018-19 cooking competitions have been organized at school and cluster level.

#### **2.35.2 if yes in 2.36.1,**

##### **2.35.2.1 the number of participants in these competitions**

- Especially in Satara District, 96 clusters had arranged Cooking competitions. Total 596 participants in these competitions.

##### **2.35.2.2 Details of judges**

- SMC members and cluster head worked as judges.

##### **2.35.2.3 How many participants were awarded**

- 96 women awarded in these competitions.

**2.35.2.4 Was the awarded participants given any cash prizes**

- No cash prizes were distributed to winners.

**2.35.2.5 Whether the awarded recipes have been shared with schools**

- Yes, recipes of winner, shared with all peoples present at that time.

**2.35.3 Details of action plan for year 2019-20**

In the year 2019-20, state action plan is as follows.

Rules	
1	Two schools from one cluster will participate in this competition.
2	Two cook cum helpers will be allowed to take participation from participating schools.
3	The participants will prepare recipes with the material and cooking cost admissible for 15 students as per MDM norms with the use of local vegetables.
4	Judges will include children, local home science teachers and nutrition experts.
5	Evaluation should be made on following points. Dress code, hygiene and cleanliness, time taken in preparation of meal, nutrition value of cooked food and local taste.
6	Only first 3 contestants will be awarded with cash prize.
7	Travelling allowance will be provided to participant cooks.
8	The winners at each level will participate in next level competition.

**Time Schedule**

Sr.No.	Competition Level	Time schedule
1	Block Level	August 2019
2	District Level	October 2019
3	State Level	November 2019

<b>Expected Budget Provision for cooking competition</b>					
Sr.No	Level	Particulars	Number	Expected Expenditure	Total in Lac
1	Block Level	Organization	403	10000	40.30
		Prize	3	6000	24.18
2	District Level	Organization	36	20000	7.20
		Prize	3	20000	7.20
3	State Level	Organization	1	250000	2.50
		Prize	5	50000	0.5
<b>Total</b>					<b>83.68</b>

**2.36 Details of minor modifications from the existing guidelines carried out by District Level Committee chaired by the District Magistrate.**

Total 55 meetings carried out under the chairperson of District Magistrate. Modification regarding guidelines made by time to time.

**2.37 Details of new interventions envisaged under 5% flexi funds - For each intervention, please provide detailed information in the below template**

- 2.37.1 Background Note
- 2.37.2 Objectives
- 2.37.3 Rationale for the intervention
- 2.37.4 Time lines
- 2.37.5 Coverage
  - 2.37.5.1 Number of Districts
  - 2.37.5.2 Number of schools
  - 2.37.5.3 Number of children
  - 2.37.5.4 Number of working days
- 2.37.6 Requirement of Funds
- 2.37.7 Monitoring
- 2.37.8 Outcome measurement



## 2.37.9 Impact assessment

### Intervention No. 1 : Set up of Kitchen Gardens

Sr.No.	Particulars	Details
2.38.1	Background Note	In Maharashtra , Satara and Kolhapur districts most of the school set their kitchen gardens. Vegetables and fruits for MDM is available at school. To develop primary knowledge of agriculture and farming , nourish the habit of labour, co-operation and social culture.
2.38.2	Objectives	<ol style="list-style-type: none"> <li>1. To make vegetables and fruits are easily available at school level.</li> <li>2. To improve the skill of agriculture and farming.</li> <li>3. To improve the dignity of labour and co-operation .</li> <li>4. Improve the quality of MDM.</li> </ol>
2.38.3	Rationale for the intervention	If a school develop kitchen garden, all students get learning experience , vegetables and fruits for MDM is available at school level and develop primary knowledge of agriculture and farming among children and helping to improve dignity of labour, co-operation and social culture.
2.38.4	Timelines	12 months
2.38.5.1	No of Districts	34 Districts
2.38.5.2	No of Schools	20000
2.38.5.3	No of children's	--
2.38.5.4	No. of working days	All working days
2.38.6	Requirement of funds	10 Crore ( 20000*5000)
2.38.7	Monitoring	District, block officials regularly make their visit to school. Also separate mechanism regarding uploading HD photos with details description of garden uploaded on MDM portal.
2.38.8	Outcome	<ol style="list-style-type: none"> <li>1. Vegetables and fruits are easily available at school level.</li> <li>2. To improve the skill &amp; knowledge of agriculture and farming.</li> <li>3. To improve the labour, co-operation and social. Improve the quality of MDM.</li> <li>4. Improve environment awareness.</li> </ol>
2.38.9	Impact assessment	

**Intervention No. 2 : Supply of eggs.**

Sr.No.	Particulars	Details
2.38.1	Background Note	As per health survey, it was found that children covered from these remote and tribal district does not get sufficient protein content from their daily food. So it is need to be provide them eggs twice in a week as a additional source of protein with regular MDM.
2.38.2	Objectives	<ol style="list-style-type: none"> <li>1. Eggs is a source of full meal.</li> <li>2. Calories are sufficient i.e. 70 per eggs.</li> <li>3. Big source of protein i.e. 6 gm per eggs.</li> <li>4. Vit A,D and B12 source.</li> <li>5. Increase the attendance percentage.</li> <li>6. Improve the quality of MDM.</li> </ol>
2.38.3	Rationale for the intervention	Eggs are a very good source of inexpensive, high quality protein. Eggs is the rich source of vitamins and minerals.
2.38.4	Timelines	50 days
2.38.5.1	No of Districts	4 Districts
2.38.5.2	No of Schools	6250
2.38.5.3	No of children's	450000
2.38.5.4	No. of working days	50 days
2.38.6	Requirement of funds	11,25,00,000 ( 450000*5*50)
2.38.7	Monitoring	District, block officials regularly make their visit to school. Also separate mechanism regarding uploading HD photos with details description of garden uploaded on MDM portal.
2.38.8	Outcome	<ol style="list-style-type: none"> <li>1. Increase in the percentage of attendance of children and improvement in health.</li> </ol>
2.38.9	Impact assessment	It will studied as per comparisons between total attendance in last year and achieved percentage of attendance in current as well as health status.

**Intervention No. 3 : Supply of Millet Laddus**

Sr.No.	Particulars	Details
2.38.1	Background Note	Supply of millets laddu to children. Millets is one the oldest foods known to mankind. It is describes as power house of nutrition.
2.38.2	Objectives	<ol style="list-style-type: none"> <li>1. It is rich in unsaturated fats, proteins, calcium and minerals.</li> <li>2. It is also high micronutrients and antioxidants.</li> <li>3. Protein % is 10.5 per gram.</li> </ol>
2.38.3	Rationale for the intervention	Millet is a wonderful grain for children. It is gluten free, nutritious, versatile, easily digestible and least allergenic grain. It is easily available grain in everywhere in Maharashtra.
2.38.4	Timelines	50 days
2.38.5.1	No of Districts	12 Districts
2.38.5.2	No of Schools	27750
2.38.5.3	No of children's	2600000
2.38.5.4	No. of working days	50 days
2.38.6	Requirement of funds	19,50,00,000 ( 2600000*1.5*50)
2.38.7	Monitoring	District, block officials regularly make their visit to school. Also separate mechanism regarding uploading HD photos with details description of garden uploaded on MDM portal.
2.38.8	Outcome	Increase in the percentage of attendance of children and improvement in health.
2.38.9	Impact assessment	It will studied as per comparisons between total attendance in last year and achieved percentage of attendance in current as well as health status.

#### Intervention No. 4: Supply of Oranges

Sr.No.	Particulars	Details
2.38.1	Background Note	Supply of oranges to children. Orange is super source of Vitamin C. It satisfy children sweet teeth without all the added sugar candy or cookies.
2.38.2	Objectives	<ol style="list-style-type: none"> <li>1. It is rich source of Vit "C".</li> <li>2. It contains soluble fiber.</li> <li>3. Easy to eat.</li> </ol>
2.38.3	Rationale for the intervention	Juices does not have the filling fiber that whole fruit does. That's why it is need to give them whole orange.
2.38.4	Timelines	50 days
2.38.5.1	No of Districts	6 Districts
2.38.5.2	No of Schools	11800
2.38.5.3	No of children's	1200000
2.38.5.4	No. of working days	50 days
2.38.6	Requirement of funds	9,00,00, 000 ( 1200000*1.5*50)
2.38.7	Monitoring	District, block officials regularly make their visit to school. Also separate mechanism regarding uploading HD photos with details description of garden uploaded on MDM portal.
2.38.8	Outcome	Increase in the percentage of attendance of children and improvement in health.
2.38.9	Impact assessment	It will studied as per comparisons between total attendance in last year and achieved percentage of attendance in current as well as health status.

**Intervention No. 5 : Supply of Bananas**

<b>Sr.No.</b>	<b>Particulars</b>	<b>Details</b>
2.38.1	Background Note	Supply of Bananas to children. Banana are high in potassium and contains good levels of protein and dietary fiber. Bananas are rich in minerals.
2.38.2	Objectives	<ol style="list-style-type: none"> <li>1. It is rich source vitamins like A,D &amp; B6</li> <li>2. It contains soluble fiber.</li> <li>3. Easy to eat.</li> <li>4. Contains high calories.</li> </ol>
2.38.3	Rationale for the intervention	It is easily available in all over Maharashtra and also good for children health.
2.38.4	Timelines	50 days
2.38.5.1	No of Districts	5 Districts
2.38.5.2	No of Schools	12500
2.38.5.3	No of children's	1650000
2.38.5.4	No. of working days	50 days
2.38.6	Requirement of funds	12,37,50, 000 ( 1650000*1.5*50)
2.38.7	Monitoring	District, block officials regularly make their visit to school. Also separate mechanism regarding uploading HD photos with details description of garden uploaded on MDM portal.
2.38.8	Outcome	Increase in the percentage of attendance of children and improvement in health.
2.38.9	Impact assessment	It will studied as per comparisons between total attendance in last year and achieved percentage of attendance in current as well as health status.

**Intervention No. 6 : Supply of Flavored Milk Powder.**

<b>Sr.No.</b>	<b>Particulars</b>	<b>Details</b>
2.38.1	Background Note	Supply of flavored Milk powder. Milk is a rich source of protein, calories vitamins and minerals.
2.38.2	Objectives	<ol style="list-style-type: none"> <li>1. It is rich source vitamins like A,C &amp; B6</li> <li>2. It contains calcium also.</li> <li>3. Easy to consume.</li> <li>4. Contains high calories.</li> </ol>
2.38.3	Rationale for the intervention	Flavors added milk powder is a rich source of vitamins. Children mostly like to drink milk
2.38.4	Timelines	25 days
2.38.5.1	No of Districts	6 Districts
2.38.5.2	No of Schools	23000
2.38.5.3	No of children's	2480000
2.38.5.4	No. of working days	25 days
2.38.6	Requirement of funds	27,28,00, 000
2.38.7	Monitoring	District, block officials regularly make their visit to school. Also separate mechanism regarding uploading HD photos with details description of garden uploaded on MDM portal.
2.38.8	Outcome	Increase in the percentage of attendance of children and improvement in health.
2.38.9	Impact assessment	It will studied as per comparisons between total attendance in last year and achieved percentage of attendance in current as well as health status.

**2.38 Any other issues and Suggestions.**

- 1) MDM should make available for those children studied in aided school but in non grant divisions which are now not admissible for MDM.
- 2) Centre share of cook-cum-helper should be increased.
- 3) This scheme is formulated in 1995. At present financial status of the some of the parents is increased. So Mid Day Meal Scheme should be made optional. it must not be compulsory for those students who can afford and like Tiffin from home.
- 4) Cooking cost should be increased
- 5) Quantity of rice for primary and upper primary should be cut off as per requirement.
- 6) Payment made as per weight of cooked food served by centralized kitchen.
- 7) Cluster Kitchen (At remote area and less enrollment school)
- 8) Cook cum helpers payment through School management committee.
- 9) Lifting of rice from FCI godown within every two months.
- 10) Use of double fortified salt and fortified edible oil.

\*\*\*\*\*

School wise information on kitchen gardens

*Annexure - W 1*

S. No.	Name of District	Name of Block	Name of school	Type of kitchen field (open field, terrace, containers)	Size of kitchen garden (approx. sq mt)	Main produce	Quantity of produce (in Kg)	Participating agencies (KVK, Horticulture Dept., Community, School's own initiative)
Details are shown in AWP & B Tabel AT- 10E								

Note : At least three photographs to be uploaded on MDM-MIS portal

### MME Expenditure 2018-19

1	2	3	4	5	6	7	8
	Activities (Please list item-wise details as far as possible)	Allocation for 2018-19	Opening Balance as on 01.04.18	Central Assistance Received from Gol	Released by State Govt. if any	Expenditure	Unspent balance as on 31.03.2019 [Col: (4+5)-7]
<b>I</b>	<b>School Level Expenses</b>					691.20	
	i) Form & Stationery					320.00	
	ii) Training of cook cum helpers					0.00	
	iii) Replacement/repair/maintenance of cooking device, utensils, etc.					0.00	
	<b>Sub Total</b>	<b>876.54</b>				<b>1011.20</b>	
<b>II</b>	<b>Management, Supervision, Training, Internal Monitoring and External Monitoring</b>						
	i) Hiring charges of manpower at various levels					657.54	
	ii) Transport & Conveyance					0.00	
	iii) Office expenditure					79.50	
	iv) Furniture, hardware and consumables etc.					0.00	
	v) Capacity building of officials					0.00	
	vi) Publicity, Preparation of relevant manuals					0.00	



vii) External Monitoring & Evaluation						0.00	
<b>Sub Total</b>	<b>876.53</b>					<b>737.04</b>	
<b>Grand Total</b>	<b>1753.07</b>	<b>104.83</b>	<b>1648.24</b>	<b>0</b>		<b>1748.24</b>	<b>0</b>