

Govt. of India
Ministry of Human Resource Development
Dept. of School Education and Literacy
Mid-Day Meal Division

PAB-MDM meeting
to consider and approve AWP&B 2020-21

(Date of the meeting: 14.05.2020)



मध्याह्न भोजन योजना
Mid Day Meal Scheme

APPRAISAL NOTE

STATE:UTTAR PRADESH

INDEX

Sl. No.	CHAPTER	Page no.
	Pre-requisite steps for submission of AWP&B	1
Part-A	General Information	2
Part-B	Review of performance during 2019-20	3-23
Part-C	Recommendations of Appraisal team and quantification of variables for central assistance during 2020-21	24-30
Part-D	Fact sheet.	31-49

Status on Pre requisite steps required for submission of AWP&B

Pre-requisite step	Status
Plan should be approved by SSMC Meeting	Yes
100% payment of honorarium shall be made to cook cum helpers up to March, 2020.	Yes
100% payment of cost of food grains shall be made to FCI up to 31st March, 2020.	No
Separate and detailed MME plan.	No
Bank account should be opened for cook cum helpers	Yes
Plan should also be submitted through MDM-MIS	Yes
Action Taken Note on the assurances given by the State during PAB meeting 2019-20.	No
Annual and Monthly data entry for the FY 2019-20 should be completed up to March, 2020.	Yes
Plan should be submitted within the scheduled date in hard and soft copies both.	Yes

Issues

- i. State has not yet provided MDM or FSA during closure of schools due to COVID-19.
- ii. State's proposal to provide MDM or FSA meant for COVID-19 closure of school days and summer vacations, after reopening of schools, is against the spirit of providing food security and immunity retention of children.
- iii. Upto 3 months delay in release of funds to schools.
- iv. Coverage vis-à-vis enrollment in primary (57%) and Upper Primary (56%) is less than national average (76%)
- v. 42% children not covered under health check up.
- vi. State is yet to surrender central assistance granted prior to 2010, for 9473 kitchen-cum-stores amounting to Rs 77.25 Cr alongwith interest.
- vii. State yet to utilize central assistance of Rs 11.74 Cr sanctioned during 2014-15 for procurement of Kitchen devices in 23,487 schools.
- viii. Only 67% monthly data entry in MDM-MIS.
- ix. Social Audit not conducted.

Best Practices

- i. Additional honorarium of Rs. 500 per month to CCH.
- ii. "MAA Samuh" supervises mid day meal.
- iii. Cooking competitions organized.
- iv. A short film 'Poshana' has been developed with the help of UNICEF for the training of Cook-cum-helpers regarding Hygiene, Safety, Nutrition and equality.

National Programme of Nutritional Support to Primary Education also known as Mid-Day Meal Programme, was launched as a Centrally Sponsored Scheme on 15th August 1995. It's objective is to boost universalization of primary education and to improve the nutritional status of children by the food being given to them.

On 28th November 2001, the Hon'ble Supreme Court passed the following order:-

"1- We direct the State Government/Union territories to implement the mid-day meal scheme by providing every child in every government and government assisted primary schools with a prepared mid-day meal with minimum contents of 300 calories of energy and 8-12 grams of protein each day of school for a minimum of 200 days. Those governments providing dry rations instead of cooked meals must within 3 months start providing cooked meals in all government aided primary schools in all of the districts of the state (in order of poverty) and must within a further period of 3 months extend the provisions of cooked meals to the remaining parts of the state.

2- We direct the Union of India and the FCI to ensure provision of fair average quality grain for the scheme on time. The State/Union Territories and the FCI are directed to do joint inspection of food grains. If the food grain is found, on joint inspection, not to be of fair average quality, it will be replaced by the FCI prior to lifting."

In compliance of the Hon'ble Supreme Court's order dated 28-11-2001 cooked meal is being served to the beneficiaries of Mid-Day Meal from 1st September 2004. The food being served has been enriched by raising its protein contents and calorific value from 15th August 2006 and now it must have 450 calories of energy and 12 grams of protein in Primary Schools. In Upper Primary Schools, it should provide 700 calories and 20 grams of protein. In Upper Primary Schools, the mid-day meal programme has started from 17th October, 07 in 695 Educationally Backward Blocks and Forest Areas of 66 districts. Now this programme is running in upper primary schools of all blocks of the State. Improved weekly menu has been circulated. The menu provides for such a diet so as to meet the enhanced energy level and protein contents.

The objective of the scheme is to increase enrolment, retention and the learning abilities of the beneficiaries, especially of children belonging to poor and downtrodden sections of the society, and, to provide a delicious meal to school going children. It is also visualized that such a meal would promote friendship and feelings of brotherhood among the children belonging to different caste, colour and creed.

1. Basic Information:

(Year 2019-20)

S. No.	INDICATORS	STATUS		
		PRY	U PRY	TOTAL
1. No. of Institutions		PRY	U PRY	TOTAL
i)	Approved by MDM-PAB for 2019-20	113203	54372	167575
ii)	Covered during the year	113162	54031	167193
1. No. of Children				
i)	Approved by MDM-PAB	7619345	3318872	10938217
ii)	Enrollment as on 30.9.2019	12454832	5738832	18193664
ii)	Average No. of children availed MDM during 01.04.2019 to 31.12.19	7117560 (57%)	3132659 (55%)	10250219 (56%)
2. Coverage of children as per Quarterly Progress Report (QPR)				
i)	Average no. of children availed MDM as per QPR-1	6049547	2602836	8652383 (48%)
ii)	Average no. of children availed MDM as per QPR-2	7393408	3245653	10639061 (58%)
iii)	Average no. of children availed MDM as per QPR-3	7595649	3337441	10933090 (60%)
3. No. of Working Days				
i)	Approved for 2019-20 for first three quarters	182	182	.
ii)	Covered during 2019-20	166	166	
4. Per unit cooking cost per child per day (in Rs.)				
AVERAGE UNIT COOKING COST PCPD		4.48	6.71	
State's contributions in cooking cost per child per day		1.79	2.68	

The minimum mandatory State Share is Rs. 1.79 and Rs. 2.68 per child per day for primary and upper primary respectively.

Part-B : Review of Performance in 2019-20 (01.04.19 to 31.03.2020)

2. Based on the information provided by the State Government in its AWP&B 2020-21, the performance during 2019-20 (01.04.19 to 31.12.2019) was reviewed. The major issues in implementation during 2019-20 are summarized as under: -

2.0 Coverage of Institutions :

Coverage in terms of No. of institutions

Difference between PAB Approval (Target) Vs No. of institutions covered (Achievement) –

i) PRIMARY

The number of existing institutions = 113203
Number of institutions covered during 01.04.19 to 31.12.19 = 113162 (100%)

ii) UPPER PRIMARY WITH PRIMARY CLASSES

The number of existing institutions = 2304
Number of institutions covered during 01.04.19 to 31.12.19 = 2229 (97%)

iii) UPPER PRIMARY

The number of existing institutions = 52068
Number of institutions covered during 01.04.19 to 31.12.19 = 51802 (99%)

The information reveals that all the 382 eligible institutions in the State have not been covered under MDMS. Due to the reasons that Principal in 19 schools are not accepting mid-day meal; 82 schools have zero enrolment; Students refused in 1 school; 10 New Schools; 8 Schools in Rented building and negligible enrollment, No Space for Kitchen in 8 schools; 64 schools not provided account details, 7 7 STC schools closed, 17 Madarasa not accepting and mid-day meal is not being served in 174 schools due to management dispute

2.1 Coverage of Children

2.1.1 Coverage against Enrolment :

a) Primary - Coverage in terms of No. of children.

Difference between Enrolment vs Average No. of Children Availed MDM (Achievement) (Refer Table 2.3 of the Analysis Sheet).

Total Enrolment as on 30.09.2019 = 12454832
Average number of children availed MDM during 01.04.19 to 31.12.19 = 7117560(57%)

The average coverage in primary classes in Uttar Pradesh is 19% less than the national average. It is pertinent to mention coverage (49%) in Shravasti is consistently below the State average during the last six-seven years. The

coverage in Firozabad was also very low (33%).The State needs to examine the less coverage in Shravasti and also in other poor performing districts.

b) Upper Primary : Coverage in terms of No. of children. Difference between Enrolment vs Average No. of Children Aailed MDM (Achievement) – UPPER PRIMARY (Refer Table 2.4 of the Analysis Sheet).

Total Enrolment as on 30.09.2019	= 5738832
Average number of children aailed MDM during 01.04.19 to 31.31.19	= 3132659 (55 %)

The average coverage in upper primary classes in Uttar Pradesh is 21% less than the national average of 76%. 13 districts (Agra, Azamgarh, Badaun, Bahraich, Bareilly, Bulundshahar, Firozabad, Ghaziabad, Hathras, Jaunpur, Lalitpur, Pilibhit, and Sharawasti have less than 50% coverage.The State may be advised to inquire the reasons for the less coverage in Firozabad only (33%),Agra & Bulandshahar (44%), Badaun (46%), Bahraich, Ghaziabad, Lalitpur & Shrawasti (47%) and in Pilibhit (48%) and also in other poor performing districts.

2.1.2 Coverage against PAB-MDM approval:

a) Primary: Coverage in terms of No. of children. Difference between PAB Approvals (Target) vs Average No. of Children Availing MDM (Achievement) (Refer Table 2.5 of the Analysis Sheet).

The number of children approved by MDM PAB for 2019-20	= 7619345
Average number of children aailed MDM during 01.04.19 to 31.12.19	= 7117560 (93%)

b) Upper Primary: Coverage in terms of No. of children.

Difference between PAB Approval (Target) Vs Average No. of Children Availing MDM (Achievement) (Refer Table 2.6 of the Analysis Sheet).

The number of children approved by MDM PAB for 2019-20	= 3318872
Average number of children aailed MDM during 01.04.19 to 31.12.19	= 3132659 (94%)

2.1.3 No. of Meals: Difference between No. of meal to be served (Target) Vs. No. of meals served (Achievement)- PY+U PY (Refer Table 2.7 of the Analysis Sheet).

The number of meals to be served during 01.04.19 to 31.12.19 = 19906.81 **Lakh**

The number of meals served during 01.04.19 to 31.12.19 = **16984.04Lakh(85%)**

2.2 FOODGRAINS (PRIMARY + UPPER PRIMARY)

2.2.1 Level of Opening balance as on 01.04.19 :(Refer Table 3.2 of the Analysis Sheet).

The opening balance of food grain with the State as on 01.04.2019 was 17158.75 MTs (6%). The total allocation of food grains during 2019-20 is 300346.87 MTs. However 21 districts had the negative in the range of (-) 1% to (-) 29% and 2 districts had nil opening balance as on 01.04.2019. But 9 districts had more than 30% in the range of 30% to 52% opening balance. Such a huge unutilized food grain indicates that either there were interruptions in the scheme or the scheme was not implemented properly in these districts. State needs to look into the reasons of having more than 30% of unutilized or negative of food grains in the above districts

2.2.2 Level of unspent balance as on 31.12.2019 : (Refer Table 3.3 of the Analysis Sheet).

The unutilized food grain with the State as on 31.12.2019 was 43616.64 MTs which is 15% of the food grain allocation of 300346.87 MTs during 2019-20. Whereas some districts had negative closing balance of food grains, the other districts had surplus food grain with them. Therefore, the State may streamline supply chain management of food grains to ensure uniform availability of food grains in all districts.

2.2.3 Availability of Food grains: (01.04.19 to 31.12.19)_(Refer Table 3.5 of the Analysis sheet).

The State Government Lifted 221738.30 MTs of food grain from Food Corporation of India. The State had unutilized food grain of 17158.75 MTs with it at the beginning of the year. Thus the total availability of food grain with the State was 238897.05 MTs (80%). The district wise analysis of availability of food grains as on 31.12.2019 indicates that more than 100% up to 128% food grain was available in 10 districts. The State needs to look into wide gap in the food grains availability in these districts.

2.2.4 Utilization of food grains: (Refer Table 3.7 of the Analysis sheet)

The State utilized 195280.41 MTs (65%) of food grains against the allocation of 300346.87 MTs. Inter district variations in the utilization of food grains ranged from 48% (Mau) and Aligarh (102%). Such a wide variation needs to be streamlined.

2.2.5 Payment of cost of foodgrains to FCI: (Refer Table 3.9 of the Analysis sheet)

The FCI has submitted bills for Rs. 4581.56 lakh during 2019-20 towards cost of food grains. The State has made payment of Rs. 3536.72 lakh (77%) to FCI till 31st December, 2019. Thus the State had FCI pending bills for Rs. 1044.83 lakh.

It appears, the State has made further payment to FCI because as per the FCI statement of outstanding bills as on 31st March, 2020, bills for Rs. 744.37 lakh are pending. State Government during the appraisal informed that total Rs. 7731.94 Lakh

have been paid against the bill raised by FCI up to March 2020. The State may ensure timely payment of all the bills received from FCI.

2.3 COOKING COST (PRIMARY + UPPER PRIMARY)

2.3.1 Level of Opening balance as on 01.04.19:(Refer Table 4.1.1 of the Analysis Sheet)

The State had opening balance of Rs. 6415.91 lakh as on 01.04.2019 which is 4% of the allocation of Rs.142776.38 lakh during 2019-20. The district wise analysis of opening balance of cooking cost as on 1.04.19 shows that in 20 districts reported negative opening balance at the beginning of the year and in the 3 districts Bharich, Etah and Maharajghanj reported (0%) opening balance. However 6 districts reported more than 20% opening balance in the beginning of the year. How the meals were cooked when there was negative balance or Zero Opening Balance of cooking cost. The State may look into the issue

2.3.2 Level of closing balance as on 31.12.19:(Refer Table 4.1.2 of the Analysis Sheet)

The closing balance of Rs. 6415.91lakh (4%) towards cooking cost. The inter-district closing balance ranged from (-30%) in Unnao to 37% in Aligarh. Thus, there is a wide gap in the closing balance of cooking cost in various districts. The State may look into this aspect.

2.3.3 Utilization of Cooking cost :(Refer Table 4.5 of the Analysis Sheet).

The State has utilized Rs. 86090.60 lakh (60%) against the allocation of Rs.142776.38 lakh up to 31.12.2019 during 2019-20. Ideally, the State should have utilized 75% of the allocated funds by 31.12.2019.

2.4 Reconciliation of utilization and performance during 2019-20 (1.4.19 to 31.03.2020)

2.4.1 Mismatch in utilization of Food grains vis-à-vis cooking cost: (Refer Table – 5.1 of Analysis Sheet)

Ideally the percentage utilization of cooking costs and food grains should tally with each other. The data furnished in the AWP&B reveals that the level in utilization of cooking cost (60%) and food grains (65%). Thus, there is mismatch of 5% in the utilization of cooking cost and food grains and districts wise its vary (-) 12% to 42%. This needs to be looked into.

2.5 Cook-Cum-Helper (PRIMARY + UPPER PRIMARY): (Refer Table – 6.2 of Analysis Sheet).

The State has engaged 384475 cook-cum-helpers (CCH) against PAB approval of 396959. Thus, 12484 CCH are yet to be engaged by the State. The CCH are paid honorarium @ Rs.1000.00 per month per cook-cum-helper for ten months in a year.

This honorarium is shared between the Centre and the State in 60:40 ratio. However, States can contribute more from their own resources. State Government of Uttar Pradesh is making additional contribution of Rs.500/- per CCH per month from its share. These cook-cum-helpers receiving honorarium through their bank accounts.

The State had opening balance of Rs.777.92 lakh on 01.04.2019. An amount of Rs.47554.01lakh was released for payment of honorarium to CCH. Thus Rs.48331.93 lakh (81%) were made available to the State as on 31.12.2019 during 2019-20. The expenditure is Rs. 36780.46 lakh (62%).

2.6 Utilization of MME(Refer Table – 7.2 of Analysis Sheet)

The annual allocation for MME during 2019-20 is Rs. 3317.03 lakh. There was opening balance of Rs.37.89 lakh with the State on 01.04.2019. Rs3257.80 lakh were released to the State. Thus the State had total availability of Rs.3295.69 lakh with during 2019-20. The State has utilized Rs.1472.58 lakh (44%) of the annual allocation.

2.7 Utilization of Transportation Assistance(Refer Table – 8.2 of Analysis Sheet)

The State had nil opening balance on 01.04.2019. The annual allocation for Transport Assistance during 2019-20 is Rs.4783.28 lakh. The State had lifted 221738.30 MTs of food grain from FCI during the year. Thus, permissible transportation assistance @ 150 per quintal for carrying the food grains to schools is Rs.3326.07 lakh. The State has incurred the expenditure of Rs. 827.15lakh (17%) on transportation of food grains from FCI godowns to schools. State Government during the appraisal informed that total Rs. 2086.39 Lakh have been paid against the bill raised by lifting agency up to March 2020. The State may ensure timely payment of all the Transportation Assistance bills.

2.8 Construction of Kitchen-cum-stores (Reference Table -9.1.3 of Analysis Sheet)

The non-recurring central assistance of Rs. 75000.66 lakh has been released to the State for construction of kitchen-cum-stores in 122572schools from 2006-07-2009-10. No additional kitchen-cum-stores was sanctioned to the State from 2010-11 till 2017-18. The State has constructed 112810 kitchen-cum-stores (92%) of the sanctioned units and utilized 89% of the allocated funds and construction work is in progress for 81 kitchen-cum-stores. The Construction for the remaining 9681 (8%) kitchen-cum-stores is yet to start. The construction for these units could not be started due to the non-availability of land in the schools. The State would be able to construct kitchen-cum-stores in 218 schools where land is now available. The central assistance for the remaining kitchen-cum-stores would be refunded to MHRD. The State may be advised to complete the construction of 293 kitchen-cum-stores by 30.12.2020 and refund central assistance for the remaining kitchen-cum-stores along with the interest earned thereon.

2.9 Procurement of Kitchen devices (Reference Table -9.2.3 of Analysis sheet)

Central assistance of Rs. 9143.75lakh has been released from 2006-07 to 2015-16 towards procurement of 1,82,875 units of kitchen devices. The State has reported that 1,75,961 (96%) units of kitchen devices have been procured. Central Assistance of Rs 4425.15 lakh was further released during 2012-13 to 2015-16 for the replacement of 1,44,403 units of kitchen devices, against this the State has replaced 1,27,830 units of Kitchen devices .It was observed that 23,487(6914 sanctioned for procurement and 16573 for replacement) Kitchen devices are yet to be procured by the State. The State is advised to thatthe remaining kitchen devices should be procured by 31.12.2020.The State has proposed replacement of 140671 kitchen devices during 2020-21with an outlay of Rs.21884.50 Lakh, which comprises of Rs.13130.70 lakh as central share and Rs. 8753.80 Lakh as State share. The State may be advised to procure the remaining 23487 kitchen devices as soon as possible during the 2020-21 and then send the proposal for replacement of 140671 kitchen devices along with the physical and financial progress report in form of GFR 12-C.

3. Data Entry Status on the MIS Web Portal

3.1. Annual and Monthly Data Entries during 2019-20

In order to smooth function of MDMS, Ministry of HRD, MDM Division has developed web based monitoring system i.e. Web based MIS in collaboration with NIC. In this web portal UT/District/Block users have to make Annual and Monthly data entry into the web portal through online. The UT should monitor data entry activities to be made timely manner by District/Block users into the portal. The Annual and monthly data entry status as on December, 2019 of the UT is given below: -

3.1.1 Annual Data Entry Status:

Annual Data Entry Status :: Fy 2019-20

S. No.	District	Total Schools	Completed Schools	% completed
1	AMROHA	1618	1618	100%
2	BALRAMPUR	2296	2296	100%
3	BANDA	2011	2011	100%
4	BIJNOR	2700	2700	100%
5	ETAH	2030	2030	100%
6	ETAWAH	1884	1884	100%
7	FAIZABAD	2146	2146	100%
8	GAUTAM BUDDHA NAGAR	735	735	100%
9	GORAKHPUR	3003	3003	100%
10	HAPUR	701	701	100%
11	HARDOI	3689	3689	100%
12	MAHARAJGANJ	2145	2145	100%
13	RAE BARELI	2325	2325	100%
14	SAMBHAL	1520	1520	100%
15	SHAHJAHANPUR	3271	3271	100%
16	SHRAWASTI	1294	1294	100%
17	SULTANPUR	2443	2443	100%
18	UNNAO	3144	3144	100%
19	KANNAUJ	1777	1776	100%
20	FARRUKHABAD	1984	1982	100%
21	RAMPUR	1984	1982	100%

Annual Data Entry Status :: Fy 2019-20

S. No.	District	Total Schools	Completed Schools	% completed
22	SHAMLI	759	758	100%
23	AMBEDKAR NAGAR	2031	2028	100%
24	MATHURA	1842	1839	100%
25	JALAUN	1927	1921	100%
26	HATHRAS	1593	1586	100%
27	JAUNPUR	3178	3156	99%
28	MIRZAPUR	2304	2288	99%
29	BHADOHI	1141	1132	99%
30	FATEHPUR	2793	2768	99%
31	CHANDAULI	1546	1530	99%
32	GONDA	3051	3009	99%
33	CHITRAKOOT	1477	1456	99%
34	BASTI	2535	2492	98%
35	GHAZIABAD	673	661	98%
36	HAMIRPUR	1231	1207	98%
37	JHANSI	1856	1816	98%
38	KAUSHAMBI	1426	1394	98%
39	ALIGARH	2493	2430	97%
40	VARANASI	1452	1413	97%
41	DEORIA	2836	2748	97%
42	KANPUR NAGAR	2464	2386	97%
43	MORADABAD	1853	1776	96%
44	SAHARANPUR	2064	1962	95%
45	KAASGANJ	1461	1360	93%
46	BAHRAICH	3506	3250	93%
47	SONBHADRA	2333	2158	92%
48	MUZAFFARNAGAR	1293	1167	90%
49	SITAPUR	4182	3768	90%
50	LAKHIMPUR KHERI	3723	3338	90%
51	PILIBHIT	1843	1583	86%
52	BAGHPAT	743	635	85%
53	AURAIYA	1652	1396	85%
54	PRATAPGARH	2922	2443	84%
55	PRAYAGRAJ	3886	3204	82%
56	AZAMGARH	3300	2624	80%
57	BARABANKI	3047	2411	79%
58	MEERUT	1470	1162	79%
59	KUSHINAGAR	2881	2087	72%
60	BALLIA	2623	1881	72%
61	AMETHI	1607	1116	69%
62	BAREILLY	2970	2024	68%
63	SANT KABIR NAGAR	1590	1028	65%
64	FIROZABAD	2071	1320	64%
65	MAINPURI	2044	1281	63%
66	BULANDSHAHR	2483	1335	54%
67	MAU	1713	666	39%
68	KANPUR DEHAT	2346	904	39%
69	GHAZIPUR	2786	768	28%

Annual Data Entry Status :: Fy 2019-20

S. No.	District	Total Schools	Completed Schools	% completed
70	MAHOBA	1054	247	23%
71	BUDAUN	2490	577	23%
72	SIDDHARTHANAGAR	2643	587	22%
73	AGRA	2746	527	19%
74	LALITPUR	1560	297	19%
75	LUCKNOW	2003	191	10%
	Total	162196	135786	84%

3.1.2. Monthly Data entry Status:

S.No.	District	% of Schools data entered on monthly basis : Fy 2019-20												
		Apr	May	Jun	Jul	Aug	Sep	Oct	Nov	Dec	Jan	Feb	Mar	Avg.
1	AMROHA	100	100	100	100	100	100	100	100	100	100	100	100	100
2	BALRAMPUR	100	100	100	100	100	100	100	100	100	100	100	100	100
3	ETAH	100	100	100	100	100	100	100	100	100	100	100	100	100
4	ETAWAH	100	100	100	100	100	100	100	100	100	100	100	100	100
5	FARRUKHABAD	100	100	100	100	100	100	100	100	100	100	100	100	100
6	RAMPUR	100	100	100	100	100	100	100	100	100	100	100	100	100
7	SULTANPUR	100	100	100	100	100	100	100	100	100	100	100	99	100
8	HARDOI	100	100	100	100	100	100	100	100	100	100	100	27	94
9	BHADOHI	99	99	99	99	98	98	98	98	97	97	94	37	93
10	BIJNOR	100	100	100	100	100	100	100	100	100	100	100	0	92
11	HAPUR	100	100	100	100	100	100	100	100	100	100	100	0	92
12	UNNAO	100	100	100	100	100	100	100	100	100	97	82	24	92
13	MORADABAD	100	100	100	100	100	100	100	99	98	84	66	45	91
14	GONDA	100	99	99	99	99	98	96	95	94	94	77	17	89
15	SHAHJAHANPUR	100	100	100	100	100	100	100	96	89	84	68	32	89
16	MIRZAPUR	99	99	99	99	99	99	99	99	99	94	65	8	88
17	GHAZIABAD	100	100	100	99	99	99	99	99	99	80	54	0	86
18	HAMIRPUR	100	100	100	100	100	100	100	99	98	69	44	0	84
19	KANNAUJ	99	98	98	98	97	96	95	95	94	81	53	0	84
20	SHAMLI	100	100	100	100	99	97	97	97	97	73	45	0	84
21	BARABANKI	90	90	90	90	90	90	88	86	83	83	63	32	81
22	JALAUN	99	98	98	98	98	98	81	79	79	77	54	0	80
23	ALIGARH	99	99	99	99	99	99	99	98	89	56	16	0	79
24	MATHURA	100	100	100	100	100	100	100	100	100	38	10	0	79
25	BANDA	100	100	100	100	100	100	100	100	100	21	0	0	77
26	GAUTAM BUDDHA NAGAR	98	98	98	98	76	76	76	76	76	76	75	0	77
27	JHANSI	98	97	97	95	93	86	79	76	74	58	50	13	76
28	SHRAWASTI	100	100	100	100	100	100	100	100	100	16	0	0	76
29	LALITPUR	98	98	98	98	98	98	98	98	98	0	0	0	74
30	LAKHIMPUR KHERI	97	91	91	91	90	89	76	75	75	58	28	0	72
31	SITAPUR	78	78	78	73	73	72	70	70	69	68	67	66	72

S.No.	District	% of Schools data entered on monthly basis : Fy 2019-20												
		Apr	May	Jun	Jul	Aug	Sep	Oct	Nov	Dec	Jan	Feb	Mar	Avg.
32	BASTI	99	99	99	99	96	86	56	56	56	49	38	21	71
33	SAMBHAL	99	99	99	87	82	82	82	81	35	34	34	34	71
34	FATEHPUR	94	93	92	91	90	86	74	63	57	48	31	23	70
35	AMBEDKAR NAGAR	98	95	95	93	93	90	74	57	54	37	22	7	68
36	SAHARANPUR	91	90	90	80	78	76	70	67	63	53	38	24	68
37	KUSHINAGAR	89	89	89	85	71	70	70	70	60	48	27	9	65
38	MUZAFFARNAGAR	94	93	91	90	83	83	71	65	65	28	18	0	65
39	KAUSHAMBI	95	95	95	94	93	88	69	54	51	24	9	0	64
40	CHANDAULI	95	92	92	91	91	90	85	72	29	12	2	1	63
41	GORAKHPUR	69	68	68	68	68	67	67	67	67	61	42	42	63
42	JAUNPUR	95	93	92	87	79	70	65	57	50	38	24	4	63
43	KAASGANJ	97	97	97	81	68	68	59	50	50	50	37	0	63
44	AZAMGARH	82	80	80	78	77	72	72	68	63	59	14	2	62
45	GHAZIPUR	82	82	81	72	71	70	70	54	54	54	53	0	62
46	BAHRAICH	92	91	91	79	68	56	52	50	44	42	35	27	61
47	VARANASI	95	90	84	80	80	61	58	57	52	41	25	15	61
48	AMETHI	94	89	89	79	69	69	60	59	58	29	29	0	60
49	SONBHADRA	90	79	73	72	72	72	70	69	58	55	9	0	60
50	DEORIA	89	89	89	76	74	71	58	58	46	18	5	0	56
51	HATHRAS	85	84	84	84	84	72	56	49	49	0	0	0	54
52	KANPUR NAGAR	75	71	71	70	70	69	61	53	50	20	15	0	52
53	BALLIA	81	78	77	73	64	60	49	48	42	35	11	1	51
54	RAE BARELI	85	84	84	73	72	65	39	32	30	21	10	0	50
55	BAGHPAT	86	85	85	80	70	44	29	29	29	18	9	0	47
56	AURAIYA	96	81	81	51	46	32	32	32	32	32	14	0	44
57	MEERUT	74	73	72	61	54	50	39	36	35	20	9	0	44
58	BULANDSHAHR	71	64	63	50	50	50	50	43	31	19	2	0	41
59	CHITRAKOOT	97	96	96	85	58	28	15	4	3	2	0	0	40
60	PRAYAGRAJ	64	62	62	58	50	49	39	29	28	18	11	7	40
61	BAREILLY	54	54	54	46	41	41	41	41	41	17	9	0	37
62	FAIZABAD	100	100	100	42	26	16	16	16	16	0	0	0	36
63	FIROZABAD	73	60	60	47	41	40	27	21	19	12	1	0	33
64	PRATAPGARH	49	48	48	47	36	34	30	25	16	14	11	3	30
65	PILIBHIT	70	50	50	42	35	35	26	23	17	4	0	0	29
66	AGRA	65	65	64	55	14	11	9	9	7	1	1	0	25
67	MAHARAJGANJ	62	52	48	44	36	33	17	3	3	3	0	0	25
68	KANPUR DEHAT	72	72	72	32	24	0	0	0	0	0	0	0	23
69	MAINPURI	42	30	30	30	30	18	17	17	17	17	17	1	22
70	LUCKNOW	97	88	48	0	0	0	0	0	0	0	0	0	20
71	MAU	54	22	21	15	14	14	14	14	14	14	14	3	18
72	BUDAUN	30	29	29	10	10	10	10	9	2	2	1	0	12
73	SIDDHARTHANAGAR	5	5	5	5	5	5	5	5	5	5	5	0	4
74	MAHOPA	0	0	0	0	0	0	0	0	0	0	0	0	0
75	SANT KABIR	0	0	0	0	0	0	0	0	0	0	0	0	0

S.No.	District	% of Schools data entered on monthly basis : Fy 2019-20												
		Apr	May	Jun	Jul	Aug	Sep	Oct	Nov	Dec	Jan	Feb	Mar	Avg.
	NAGAR													
	TOTAL	88	86	86	81	78	75	70	67	64	52	40	20	67

3.2. AUTOMATED MONITORING SYSTEM

SMS based Automated Monitoring System (AMS) is in operation in the State. SMS is sent by the schools mid-day-meal in charge on registered number Information collected under AMS is validated.

S.No.	District	Total Institutions	Maximum number of institutions for which daily data transferred during the month												
			Apr	May	Jun	Jul	Aug	Sep	Oct	Nov	Dec	Jan	Feb	Mar	Avg
			2019	2019	2019	2019	2019	2019	2019	2019	2019	2020	2020	2020	2423
1	AGRA	2956	2690	2683	0	2680	2666	2663	2665	2666	2658	2677	2675	0	2672
2	ALIGARH	2608	2438	2430	0	2449	2450	2450	2439	2436	2431	2426	2436	0	2439
3	ALLAHABAD	3809	3472	3457	0	3471	3473	3483	3477	3479	3476	3477	3480	0	3475
4	AMBEDKARNAGAR	1998	1977	1976	0	1977	1977	1977	1970	1970	1968	1969	1969	0	1973
5	AMETHI	1747	1730	1722	0	1736	1730	1731	1730	1728	1728	1730	1728	0	1729
6	AMROHA	1614	1529	1528	0	1530	1529	1525	1526	1527	1523	1526	1523	0	1527
7	AURAIYA	1621	1556	1553	0	1556	1562	1563	1563	1561	1559	1560	1558	0	1559
8	AZAMGARH	3506	3428	3419	0	3423	3425	3429	3424	3427	3420	3425	3428	0	3425
9	BADAUN	2503	2359	2349	0	2341	2317	2306	2273	2274	2285	2307	2302	0	2311
10	BAGHPAT	764	738	733	0	731	739	743	742	743	745	741	738	0	739
11	BAHRAICH	3463	3399	3392	0	3401	3401	3401	3394	3393	3391	3391	3391	0	3395
12	BALLIA	2724	2647	2618	0	2624	2642	2650	2636	2639	2640	2638	2642	0	2638
13	BALRAMPUR	2271	2186	2180	0	2202	2206	2202	2202	2199	2202	2203	2201	0	2198
14	BANDA	1939	1878	1851	0	1878	1879	1870	1865	1871	1870	1871	1869	0	1870
15	BARABANKI	2978	2856	2857	0	2845	2860	2862	2866	2861	2855	2839	2856	0	2856
16	BAREILLY	2989	2722	2699	0	2704	2720	2722	2710	2707	2703	2704	2710	0	2710
17	BASTI	2515	2435	2432	0	2430	2441	2439	2436	2437	2434	2434	2432	0	2435
18	BHADOH(SR NAGAR)	1125	1118	1116	0	1124	1123	1123	1121	1120	1118	1119	1116	0	1120
19	BIJNOR	2608	2409	2400	0	2387	2397	2439	2428	2426	2417	2425	2422	0	2415
20	BULANDSHAHR	2376	2287	2285	0	2276	2275	2280	2277	2268	2266	2269	2270	0	2275
21	CHANDAULI	1519	1467	1465	0	1465	1465	1462	1463	1460	1463	1463	1462	0	1464

S.No.	District	Total Institutions	Maximum number of institutions for which daily data transferred during the month												
			Apr	May	Jun	Jul	Aug	Sep	Oct	Nov	Dec	Jan	Feb	Mar	Avg
			2019	2019	2019	2019	2019	2019	2019	2019	2019	2019	2020	2020	2020
22	CHITRAKOT	1442	1425	1416	0	1422	1413	1415	1412	1418	1420	1421	1420	0	1418
23	DEORIA	2793	2691	2686	0	2684	2688	2691	2692	2690	2684	2689	2689	0	2688
24	ETAH	2027	1966	1959	0	1965	1968	1966	1966	1964	1959	1966	1967	0	1965
25	ETAWAH	1849	1750	1751	0	1759	1771	1758	1758	1758	1747	1756	1747	0	1756
26	FAIZABAD	2141	2039	2031	0	2045	2044	2028	2025	2022	2015	2021	2033	0	2030
27	FARRUKHABAD	1963	1792	1781	0	1782	1804	1811	1802	1789	1788	1746	1705	0	1780
28	FATEHPUR	2764	2676	2673	0	2676	2683	2676	2673	2670	2668	2666	2659	0	2672
29	FIROZABAD	2173	2070	2069	0	2068	2074	2074	2063	2068	2063	2067	2065	0	2068
30	G.B.NAGAR	735	707	707	0	709	709	706	692	691	694	694	688	0	700
31	GHAZIABAD	648	460	455	0	450	459	455	453	454	463	462	460	0	457
32	GHAZIPUR	2958	2778	2768	0	2783	2787	2783	2776	2772	2773	2768	2772	0	2776
33	GONDA	3178	3042	3033	0	3051	3064	3069	3068	3066	3075	3072	3070	0	3061
34	GORAKHPUR	3162	2948	2933	0	2932	2938	2926	2895	2879	2881	2879	2871	0	2908
35	HAMIRPUR	1209	1148	1140	0	1143	1145	1151	1149	1151	1149	1151	1152	0	1148
36	HAPUR	703	635	629	0	633	636	627	628	627	627	629	625	0	630
37	HARDOI	3775	3665	3648	0	3649	3674	3680	3668	3657	3662	3653	3653	0	3661
38	HATHRAS	1569	1455	1442	0	1450	1445	1456	1450	1452	1449	1449	1445	0	1449
39	JALAUN	1903	1722	1716	0	1721	1728	1727	1725	1719	1723	1722	1720	0	1722
40	JAUNPUR	3498	3293	3290	0	3355	3388	3383	3390	3383	3386	3386	3379	0	3363
41	JHANSI	1854	1688	1687	0	1691	1691	1683	1679	1686	1680	1683	1681	0	1685
42	KAASGANJ	1462	1413	1409	0	1412	1414	1414	1413	1412	1410	1410	1410	0	1412
43	KANNAUJ	1747	1644	1637	0	1655	1671	1685	1684	1680	1678	1690	1684	0	1671
44	KANPUR DEHAT	2323	2250	2246	0	2246	2250	2258	2255	2260	2262	2262	2265	0	2255
45	KANPUR NAGAR	2458	1975	1974	0	1975	1976	1974	1972	1972	1971	1973	1975	0	1974
46	KAUSHAMBI	1444	1434	1427	0	1438	1437	1439	1429	1429	1427	1428	1428	0	1432
47	KUSHINAGAR	3023	2939	2929	0	2922	2923	2924	2929	2927	2923	2931	2935	0	2928
48	LAKHIMPUR KHERI	3898	3822	3806	0	3816	3827	3820	3819	3812	3813	3818	3814	0	3817
49	LALITPUR	1549	1487	1481	0	1480	1483	1495	1482	1487	1487	1484	1483	0	1485
50	LUCKNOW	2061	1589	1587	0	1589	1585	1578	1575	1576	1573	1570	1573	0	1580

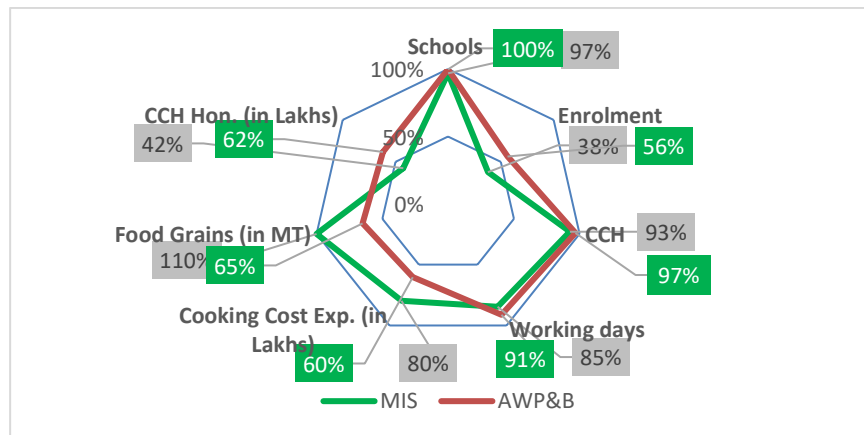
S.No.	District	Total Institutions	Maximum number of institutions for which daily data transferred during the month												
			Apr	May	Jun	Jul	Aug	Sep	Oct	Nov	Dec	Jan	Feb	Mar	Avg
			2019	2019	2019	2019	2019	2019	2019	2019	2019	2019	2020	2020	2020
51	MAHOBA	1039	934	930	0	934	930	932	934	937	931	938	939	0	934
52	MAHRAJGANJ	2170	2088	2079	0	2082	2100	2110	2102	2095	2092	2098	2094	0	2094
53	MAINPURI	2081	1972	1962	0	1968	1961	1966	1956	1951	1938	1952	1953	0	1958
54	MATHURA	2005	1845	1829	0	1852	1843	1843	1827	1821	1802	1826	1829	0	1832
55	MAU	1658	1547	1537	0	1541	1574	1587	1587	1587	1587	1589	1589	0	1573
56	MEERUT	1528	1207	1194	0	1207	1208	1215	1213	1210	1213	1212	1207	0	1209
57	MIRZAPUR	2228	2135	2131	0	2138	2152	2141	2148	2149	2147	2147	2147	0	2144
58	MORADABAD	1794	1597	1592	0	1593	1601	1595	1591	1588	1590	1592	1588	0	1593
59	MUZAFFARNAGAR	1280	1185	1180	0	1178	1175	1179	1182	1183	1184	1184	1187	0	1182
60	PILIBHIT	1786	1707	1704	0	1706	1699	1713	1706	1705	1699	1708	1711	0	1706
61	PRATAPGARH	2860	2781	2773	0	2793	2779	2779	2771	2784	2782	2786	2786	0	2781
62	RAEBARELI	2564	2477	2477	0	2479	2486	2502	2496	2495	2490	2493	2492	0	2489
63	RAMPUR	1967	1786	1785	0	1783	1798	1804	1794	1795	1792	1801	1797	0	1794
64	SAHARANPUR	1968	1790	1784	0	1783	1778	1781	1780	1783	1781	1782	1786	0	1783
65	SAMBHAL	1577	1426	1422	0	1423	1438	1448	1445	1446	1444	1448	1449	0	1439
66	SANTKABIRNAGAR	1591	1583	1574	0	1577	1579	1582	1582	1578	1580	1576	1578	0	1579
67	SHAHJAHANPUR	3237	3084	3080	0	3073	3081	3080	3072	3072	3069	3072	3071	0	3075
68	SHAMLI	777	686	683	0	685	685	684	685	686	682	685	685	0	685
69	SHRAWASTI	1272	1245	1247	0	1249	1241	1237	1233	1236	1243	1245	1253	0	1243
70	SIDDHARTH NAGAR	2713	2626	2599	0	2626	2629	2627	2600	2584	2583	2625	2643	0	2614
71	SITAPUR	4174	4006	3994	0	4013	4017	4013	4009	4010	4000	4003	4011	0	4008
72	SONBHADRA	2480	2454	2440	0	2443	2457	2455	2441	2433	2432	2436	2433	0	2442
73	SULTANPUR	2442	2384	2380	0	2379	2382	2384	2381	2385	2386	2387	2387	0	2384
74	UNNAO	3191	3117	3110	0	3117	3121	3122	3120	3122	3118	3118	3117	0	3118
75	VARANASI	1566	1330	1325	0	1327	1325	1327	1331	1331	1330	1328	1327	0	1328
	TOTAL	163890	154816	154266	0	154680	154991	155078	154715	154629	154497	154671	154635	0	154698

S.No.	District	% of Schools daily reported in AMS during 2019-20													
		Apr	May	Jun	Jul	Aug	Sep	Oct	Nov	Dec	Jan	Feb	Mar	Avg.	
1	AGRA	91	91	0	91	90	90	90	90	90	91	90	0	90	
2	ALIGARH	93	93	0	94	94	94	94	93	93	93	93	0	94	
3	ALLAHABAD	91	91	0	91	91	91	91	91	91	91	91	0	91	
4	AMBEDKAR NAGAR	99	99	0	99	99	99	99	99	99	98	99	99	0	99
5	AMETHI	99	99	0	99	99	99	99	99	99	99	99	99	0	99
6	AMROHA	95	95	0	95	95	94	95	95	94	95	94	0	95	
7	AURAIYA	96	96	0	96	96	96	96	96	96	96	96	0	96	
8	AZAMGARH	98	98	0	98	98	98	98	98	98	98	98	0	98	
9	BADAUN	94	94	0	94	93	92	91	91	91	92	92	0	92	
10	BAGHPAT	97	96	0	96	97	97	97	97	98	97	97	0	97	
11	BAHRAICH	98	98	0	98	98	98	98	98	98	98	98	0	98	
12	BALLIA	97	96	0	96	97	97	97	97	97	97	97	0	97	
13	BALRAMPUR	96	96	0	97	97	97	97	97	97	97	97	0	97	
14	BANDA	97	95	0	97	97	96	96	96	96	96	96	0	96	
15	BARABANKI	96	96	0	96	96	96	96	96	96	95	96	0	96	
16	BAREILLY	91	90	0	90	91	91	91	91	90	90	91	0	91	
17	BASTI	97	97	0	97	97	97	97	97	97	97	97	0	97	
18	BHADOHI(SR NAGAR)	99	99	0	100	100	100	100	100	99	99	99	0	100	
19	BIJNOR	92	92	0	92	92	94	93	93	93	93	93	0	93	
20	BULANDSHAHR	96	96	0	96	96	96	96	95	95	95	96	0	96	
21	CHANDAULI	97	96	0	96	96	96	96	96	96	96	96	0	96	
22	CHITRAKOOT	99	98	0	99	98	98	98	98	98	99	98	0	98	
23	DEORIA	96	96	0	96	96	96	96	96	96	96	96	0	96	
24	ETAH	97	97	0	97	97	97	97	97	97	97	97	0	97	
25	ETAWAH	95	95	0	95	96	95	95	95	94	95	94	0	95	
26	FAIZABAD	95	95	0	96	95	95	95	94	94	94	95	0	95	
27	FARRUKHABAD	91	91	0	91	92	92	92	91	91	89	87	0	91	
28	FATEHPUR	97	97	0	97	97	97	97	97	97	96	96	0	97	
29	FIROZABAD	95	95	0	95	95	95	95	95	95	95	95	0	95	
30	G.B.NAGAR	96	96	0	96	96	96	94	94	94	94	94	0	95	
31	GHAZIABAD	71	70	0	69	71	70	70	70	71	71	71	0	71	
32	GHAZIPUR	94	94	0	94	94	94	94	94	94	94	94	0	94	
33	GONDA	96	95	0	96	96	97	97	96	97	97	97	0	96	
34	GORAKHPUR	93	93	0	93	93	93	92	91	91	91	91	0	92	
35	HAMIRPUR	95	94	0	95	95	95	95	95	95	95	95	0	95	
36	HAPUR	90	89	0	90	90	89	89	89	89	89	89	0	90	
37	HARDOI	97	97	0	97	97	97	97	97	97	97	97	0	97	
38	HATHRAS	93	92	0	92	92	93	92	93	92	92	92	0	92	
39	JALAUN	90	90	0	90	91	91	91	90	91	90	90	0	91	
40	JAUNPUR	94	94	0	96	97	97	97	97	97	97	97	0	96	
41	JHANSI	91	91	0	91	91	91	91	91	91	91	91	0	91	
42	KAASGANJ	97	96	0	97	97	97	97	97	96	96	96	0	97	
43	KANNAUJ	94	94	0	95	96	96	96	96	96	97	96	0	96	

S.No.	District	% of Schools daily reported in AMS during 2019-20												
		Apr	May	Jun	Jul	Aug	Sep	Oct	Nov	Dec	Jan	Feb	Mar	Avg.
44	KANPUR DEHAT	97	97	0	97	97	97	97	97	97	97	98	0	97
45	KANPUR NAGAR	80	80	0	80	80	80	80	80	80	80	80	0	80
46	KAUSHAMBI	99	99	0	100	100	100	99	99	99	99	99	0	99
47	KUSHINAGAR	97	97	0	97	97	97	97	97	97	97	97	0	97
48	LAKHIMPUR KHERI	98	98	0	98	98	98	98	98	98	98	98	0	98
49	LALITPUR	96	96	0	96	96	97	96	96	96	96	96	0	96
50	LUCKNOW	77	77	0	77	77	77	76	76	76	76	76	0	77
51	MAHOBA	90	90	0	90	90	90	90	90	90	90	90	0	90
52	MAHRAJGANJ	96	96	0	96	97	97	97	97	96	97	96	0	96
53	MAINPURI	95	94	0	95	94	94	94	94	93	94	94	0	94
54	MATHURA	92	91	0	92	92	92	91	91	90	91	91	0	91
55	MAU	93	93	0	93	95	96	96	96	96	96	96	0	95
56	MEERUT	79	78	0	79	79	80	79	79	79	79	79	0	79
57	MIRZAPUR	96	96	0	96	97	96	96	96	96	96	96	0	96
58	MORADABAD	89	89	0	89	89	89	89	89	89	89	89	0	89
59	MUZAFFAR NAGAR	93	92	0	92	92	92	92	92	93	93	93	0	92
60	PILIBHIT	96	95	0	96	95	96	96	95	95	96	96	0	96
61	PRATAPGARH	97	97	0	98	97	97	97	97	97	97	97	0	97
62	RAE BARELI	97	97	0	97	97	98	97	97	97	97	97	0	97
63	RAMPUR	91	91	0	91	91	92	91	91	91	92	91	0	91
64	SAHARANPUR	91	91	0	91	90	90	90	91	90	91	91	0	91
65	SAMBHAL	90	90	0	90	91	92	92	92	92	92	92	0	91
66	SANT KABIR NAGAR	99	99	0	99	99	99	99	99	99	99	99	0	99
67	SHAHJAHANPUR	95	95	0	95	95	95	95	95	95	95	95	0	95
68	SHAMLI	88	88	0	88	88	88	88	88	88	88	88	0	88
69	SHRAWASTI	98	98	0	98	98	97	97	97	98	98	99	0	98
70	SIDDHARTH NAGAR	97	96	0	97	97	97	96	95	95	97	97	0	96
71	SITAPUR	96	96	0	96	96	96	96	96	96	96	96	0	96
72	SONBHADRA	99	98	0	99	99	99	98	98	98	98	98	0	98
73	SULTANPUR	98	97	0	97	98	98	98	98	98	98	98	0	98
74	UNNAO	98	97	0	98	98	98	98	98	98	98	98	0	98
75	VARANASI	85	85	0	85	85	85	85	85	85	85	85	0	85
	TOTAL	94	94	0	94	95	95	94	94	94	94	94	0	94

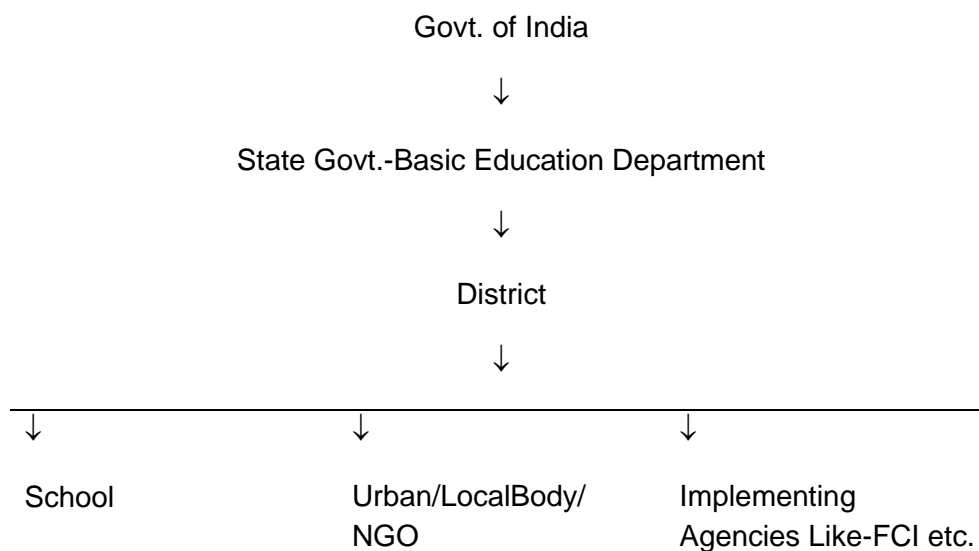
3.3. Comparison of Data from MIS and AWP&B

Component	MIS	AWP&B
Schools	162196	167193
Enrolment	6867453	10250219
CCH	367642	384475
Working days	154	166
Cooking Cost Exp. (in Lakhs)	113794	86090.6
Food Grains (in MT)	330062	195280
CCH Hon. (in Lakhs)	25275.4	36780.5



5. Fund Flow

Existing mechanism for release of funds up to school/implementing agency levels is given below:



The State Government makes budgetary provision for different objects and grants and nodal department of the State Government releases financial sanctions directly to the

District Collectors. The District Collectors draw funds according to their requirements from district treasuries and send directly to Madhyan Bhojan Nidhi in the schools of rural areas; and in urban areas Nagar Nigams, Nagar Palika, Nagar Panchayats, town areas, FCI and Transportation agencies etc, as the case may be. In urban areas where NGO's are in operation, the conversion cost is given to them according to the bills raised by them after verification from the education department. **Honorarium to cook-cum-helper is being directly send to Cook's Bank Account.** MME fund is sent through RTGS to districts who sent to the schools through NEFT

S.No.	Instalment / Component	Amount (Rs. In lakhs)			Date of receiving of funds by the State / UT	Status of Releasing of Funds by the State / UT	
		Gen	SC	ST		Directorate / Authority	District*
						Date	Date
1	2	3	4	5	6	10	14
(A) Recurring Assistance							
1	Adhoc Grant (25%)	20059.25	7919.39	214.26	29.04.2019		
	Cost of Foodgrain	1972.89					03.06.2019
	Cooking Cost	13094.85	6088.88	164.74			19.07.2019
							19.07.2019
	Cooks Honorarium	3936.74	1830.51	49.52			16.07.2019
							16.07.2019
							19.07.2019
							16.07.2019
	Transportation Cost	556.27					28.05.2019
	MME	498.50					11.05.2019
2	Balance of 1st Instalment	29139.76	11198.29	302.98	16.09.2019		
	Cost of Foodgrain	2828.18					30.10.2019
	Cooking Cost	17528.11	8046.47	217.70			26.11.2019
							05.12.2019
	Cooks Honorarium	6865.80	3151.82	85.28			26.11.2019
							26.11.2019
							05.12.2019
							26.11.2019
	Transportation Cost	476.63					08.11.2019
	MME	1441.04				30.10.2019	

Funds are released by district into the MDM accounts 'Madhyanh Bhojan Nidhi' of the schools directly through e-payment within a month. The State released ad-hoc grant and balance of 1st installment of central assistance to the schools after 2.5 months.

6. Management Structure

In Uttar Pradesh Basic Education Department is a nodal department for running Mid-Day Meal Scheme, Which coordinates with different departments like Food Department, Food Corporation of India, Panchayati Raj Department, Health and other Departments to run smoothly Mid-Day Meal Scheme in the State. State Steering-cum-

monitoring Committee has been constituted under the chairmanship of Chief Secretary, Govt. of Uttar Pradesh which meets on Quarterly basis to discuss performance of the Scheme. Also, a full-fledged Mid-Day Meal Authority with proper staff has been constituted in 2006 to act as a Nodal body at State level for running Mid-Day Meal Scheme. District Magistrates have been designated as the Nodal Officer of this scheme at District level. For frequent & effective supervision of MDM scheme in Schools, various MDM Task forces have been formed at District & Block level under the leadership of District Magistrate & Sub Divisional Magistrate respectively. The Task Forces comprise of officers from the Education department as well as other departments. At Divisional & District level, MDM cells have been established, in the office of Asst. Director (Basic)/District Basic Education Officer respectively. There is one Coordinator & one Computer Operator appointed on contractual basis in MDM cells. At the school level Mid Day Meal is provided mostly through Gram Panchayats in rural areas. In urban areas, the Ward Members & NGOs are responsible for providing MDM. The official (accountants and computer operators) at block level made available under SSA have been instructed to work for MDM scheme too. An innovative mechanism of IVRS based monitoring system has been deployed to take information directly from schools on daily basis.

6. Capacity Building

377301 cook-cum-helpers (98%) have been trained by 14090 Master Trainers out of 384475 cook-cum-helpers engaged under Mid Day Meal Scheme for preparing the hygienic and wholesome mid day meal.

7. Grievance Redressal Mechanism

A toll free Number **1800-4190-102** has been installed at Mid Day Meal Authority for grievance redressal. Complaints regarding Mid day meal not being cooked regularly and appointment / honorarium of cook cum helpers are mostly received through toll free number. After, receiving the complaints, the MDM Authority obtains the comments of district level authorities. The report submitted by the district authorities are scrutinized and necessary instructions are issued for taking remedial action. The State Government received 987 grievances up to 31st December, 2019 and all have been resolved.

8. Testing of Meal by accredited labs

Since the inception of the scheme, the State has encouraged the testing of cooked food samples with the help of the concerned departments. At present, the Food Safety Officers at district level are given this responsibility to collect the samples from schools and provide their laboratory test reports to the concerned BSA. It has been seen that the regularity is not been maintained in most of the districts even after continuous requisition to the concerned department. The State however, propose to choose few laboratories and take up this activity from the authority level as an intervention in the year 2020-21.

There are 05 functional FDA laboratories in UP in Lucknow, Varanasi, Agra, Gorakhpur and Meerut. The samples collected by the Food Safety Officers are tested in these FDA laboratories. Instructions have been issued to pick at least four samples in a month in each district by the concerned food safety officers.

Around 1049 samples have been randomly collected out of which 799 samples tested in laboratories, out of which only 13 samples were found substandard for which necessary actions were taken by the district authorities.

9. Community participation:

- i) **Tasting of meal:** Instructions have been issued for the food to be tasted by the teachers/Gram Pradhan and one or two of the parent, and when they certify that the food is palatable, delicious and harmless food is to be given to the children. Daily record of tasting of food by teachers/cook/community is maintained in Mid day meal register itself. The MDM is served tasting it by teacher & cook. Instructions have been issued for maintenance of roster of presence of at least two parents in the school at the time of serving and tasting of mid day meal. The mid day meal Register itself contains a column in this regard, which is regularly being signed by the parents tasting the meal. "MAA Samuh" have also been created in all schools, under which a group of 6 mothers is formed and they regularly visit the schools according to their roaster and supervise the food being cooked and served to the students.
- ii) **Tithi Bhojan:** Community participation in the form of "Tithi Bhojan" is not available in the State. The State Government may encourage participation of community in Mid Day Meal Scheme because it will promote ownership of the scheme by community and also the supervision of mid day meal.
- iii) **Community Contribution:** Community has donated eating plates, R.O. purifier etc in some districts. Keeping in mind the sensitiveness of the scheme and health issues of children, the state, somehow, does not accept pre cooked food from the community.

10. Social Audit

The Social Audit completed in 15 districts through Social Audit Department of U.P. Due to the lockdown, the report is pending. Social Audit has been planned for all districts in U.P during 2020-21.

It is relevant to mention that the State PAB-MDM meeting held on 13th June, 2019 advised the State that Social Audit covers the issues of equity and equality along with expenditure in programme implementation. State was further informed that under the provisions of section 28 of National Food Security Act, 2013 Social Audit of the scheme is mandatory. As per the MDM guidelines also, it is mandatory to conduct Social Audit in at least 20 schools in all districts. The Social Audit Units (SAU) set up under MNREGS, may be actively involved in conducting Social Audit of MDM in all districts.

The State may be take necessary action for conducting social audit as per the above decision of PAB-MDM and share the findings of Social Audit with Department of School Education and Literacy, Ministry of Human Resource Development, Government of India.

11. Monitoring & Supervision

State Steering-cum-monitoring Committee has been constituted under the chairmanship of Chief Secretary, Govt. of Uttar Pradesh which meets on Quarterly basis to discuss performance of the Scheme. For frequent & effective supervision of MDM scheme in Schools, various MDM Task forces have been formed at District & Block level under the leadership of District Magistrate & Sub Divisional Magistrate respectively. The Task Forces comprise of officers from the Education department as well as other departments. The members of Task Force have to inspect 5 schools per month & submit their report in monthly task force meeting. State level officers of Mid Day Meal Authority also visit & inspect the programme every month in various district of State. State Level Task Force is formed every year comprising Officers of different departments to inspect Mid-Day Meal Scheme in Schools of various Districts.

In addition with IVRS Based monitoring System Mobile App based Prerna Inspection & MDM Module has been started on 04.09.2019. Prerna Inspection & MDM module helps us to provide real time data from ground level with Geo Tagged photos of school based activity like MDM etc.

12. Rashtriya Bal Swasthya Karyakaram (RBSK):

Health checkup of 10464859 children in 144511 schools has been carried out during 2019-20 under RBSK. Weekly Iron Folic Supplementation were provided to 10464859 school children in 144511 schools. De-worming tablets were given to 10464859 children in 144511 schools. 94021 school children were identified with refractive error and spectacles were distributed to all the 94021 children identified children in 5602 schools.

13. School Nutrition Gardens:

School Nutrition Gardens have been set up in 9118 schools out of 43747 schools where setting up of SNGs is possible. The setting up of kitchen gardens is in progress in 3689 schools. The State proposes to set up kitchen gardens in 30,000 schools during 2020-21.

14. Non-Government Organization (NGO):

The State has engaged 126 Centralized kitchens in Twenty Three districts for supplying mid day meal to 1134627 children in 8,355 schools. The honorarium is apportioned between the cook-cum-helpers engaged at the Centralized Kitchen for preparing mid day meal and schools for serving it to the students and washing of utensils etc.

Part: C - State Govt.'s Proposals and Recommendations of Appraisal Team for 2020-21

S. No.	Component	PAB Approval 2019-20	Proposal for 2020-21	Recommendations for 2020-21
1	Institutions			
1.1	Primary	113916	112848	112848
1.2	Upper Primary	54386	54031	54031
1.3	NCLP	466	314	314
2	Children			
2.1	Primary	7619345	7975431	7595649
2.2	Upper Primary	3300302	3503168	3336156
2.3	NCLP	18570	1285	1285
3	Working Days			
3.1	Primary	253	249	249
3.2	Upper Primary	253	249	249
3.3	NCLP	312	310	310
4	Cook cum Helper			
4.1	Primary	339695	390574	390574
4.2	Upper Primary			
5	Drought			
5.1	Children (Pry)	0	0	0
5.2	Children (U Pry)	0	0	0
5.3	Working days	0	0	0
5.4	Cook-cum-helpers	0	0	0
6	Non Recurring			
6.1	Kitchen-cum-Stores	0	0	0
6.2	Repair of kitchen-cum-stores	0	0	0
6.3	Kitchen Devices	0	0	0
6.4	Kitchen Devices (Replacement)	60257	140671	140671
6.5	Flexible funds for new interventions			
6.5.1	Supplementary Nutrition over and above existing provisions (including additional items already being provided by State) –	Seasonal fruit 10938217children in 168768schools in 75 districts for 10 days (once in a month) (i.e. all	Chikki, Gur Patti & Besan ka Halwa for 211 days to	Chikki, Gur Patti & Besan ka Halwa for 211 days to 13,52,253 Primary

	<i>to children</i>	students covered under MDM)	13,52,253 Primary and Upper primary enrolled children in 8 Aspirational districts	and Upper primary enrolled children in 8 Aspirational districts
6.5.2	School Kitchen Gardens	113473	30000	30000
7	Central Assistance (Rs in Lakh)			
7.1	Regular	126170.09	139017.43	133542.08
7.2	Drought	0.00	0.00	0.00
7.3	Kitchen cum Store	0.00	0.00	0.00
7.4	Repair of kitchen-cum-stores	0.00	0.00	0.00
7.5	Kitchen Devices (new)	0.00	0.00	0.00
7.6	Kitchen Devices (Replacement)	5534.25	13130.70	13130.70
7.7	Grand Total	131704.34	152148.13	146672.78

Part: D - State Govt.'s Proposals and Recommendations of Appraisal Team for Provision of MDM during summer vacations 2020-21 as one time measure

S. No.	Component	PAB Approval 2019-20	Proposal for 2020-21	Recommendations for 2020-21
1	Children			
1.1	Primary	NA	12454832	12454832
1.2	Upper Primary	NA	5738832	5738832
2	Working Days			
2.1	Primary	NA	32	32
2.2	Upper Primary	NA	32	32
3	Central Assistance (Rs in Lakh)			
3.1	One time assistance	NA	22896.41	22896.41

State: UTTAR PRADESH

QUANTIFICATION OF CENTRAL ASSISTANCE FOR 2020-21**A. Food grains**

Sl. No.	Stage	No. of Children	Working days	Quantity (in MTs)		
				Rice	Wheat	Total
1	Primary (@ 100 gms per child per school day)	7595649	249	126718.21	62413.45	189131.66
2	U. Primary (@150 gms per child per school day)	3336156	249	83485.64	41119.79	124605.43
3	NCLP (@150 gms per child per school day)	1285	310	40.03	19.72	59.75
4	Drought					
4.1	Primary	0	0	0	0	0
4.2	Upper Primary	0	0	0	0	0
TOTAL		10933090		210243.88	103552.96	313796.84
5	For summer vacations as an one time measure					
5.1	Primary (@ 100 gms per child per school day)	12454832	32	26703.16	13152.30	39855.46
5.2	U. Primary (@150 gms per child per school day)	5738832	32	18456.08	9090.31	27546.39
TOTAL		18193664		45159.24	22242.61	67401.85
Grand Total				255403.12	125795.57	381198.70

B. Cost of Food-grains, Cooking cost, Transport Assistance, Hon. to cook-cum-helpers and Management Monitoring and Evaluation (MME)

Sl. No.	Component/norm	Amount admissible
		(Rs. in lakh)
1	2	3
Primary		
1	Cost of Food grains @ Rs. 3000 per MT for rice and Rs.2000 per MT for wheat	5049.82
2	Unit Cooking Cost- Rs. 4.97 per child per day	
2.1	Central Share @ Rs 2.98 per child per day	56361.23
2.2	Minimum Mandatory State Share @ Rs.1.99 per child per day	37637.20
3	Transportation Cost @ Rs150/ Per MT food grains	2836.97
4	Honorarium for cook cum Helper (Primary +Upper Primary)	
4.1	Central Share - @ Rs600/- for 10 months)	23434.44
4.2	State Share - @ Rs400/- for 10 months)	15622.96
5	Management Monitoring and Evaluation (MME) @ 2.7% of the i) Cost of food grains ii) Cooking cost	2367.43

	iii) Cost of transportation and iv) Honorarium to cook – cum-helpers	
Total Central Share for Primary		90049.89

Upper Primary		
6	Cost of Food grains @ Rs. 3000 per MT for rice and Rs.2000 per MT for wheat	3326.96
7	Unit Cooking Cost- Rs. 7.45 per child per day	
7.1	Central share @ Rs. 4.47 per child per day	37132.42
7.2	Minimum Mandatory State Share @ Rs 2.98 per child per day	24754.94
8	Transportation cost @ Rs.150/-Per MT food grains	1869.08
9	Honorarium for cook cum Helper included in Primary	
9.1	Central Share - @ Rs 600/- for 10 months)	0.00
9.2	State Share - @ Rs 400/- for 10 months)	0.00
10	Management Monitoring and Evaluation (MME) @ 2.7% of the 1) Cost of food grains 2) Cooking cost 3) Cost of transportation and 4) Honorarium to cook – cum-helpers	1142.87
Total Central Share for Upper Primary		43471.33
NCLP		
11	Cost of Food grains @ Rs. 3000 per MT for rice and Rs.2000 per MT for wheat	1.60
12	Unit Cooking Cost- Rs. 7.45 per child per day	
12.1	Central share @ Rs. 4.47 per child per day	17.81
12.2	Minimum Mandatory State Share @ Rs 2.98 per child per day	11.87
12.3	Transportation cost @ Rs 150/- Per MT food grains	0.90
12.4	Management Monitoring and Evaluation (MME) @ 2.7% of the 1) Cost of food grains 2) Cooking cost and 3) Cost of transportation	0.55
Total Central Share for NCLP		20.86
Total of Central Share (Primary + Upper Primary + NCLP)		133542.08

C. Drought (If Applicable) - Not Applicable

Sl. No.	Component/norm	Amount admissible
		(Rs. in lakh)
1	2	3
Primary		
1	Cost of Food grains @ Rs. 3000 per MT for rice and Rs.2000 per MT for wheat	0
2	Unit Cooking Cost- Rs. per child per day	
2.1	Central Share @ Rs. per child per day	0
2.2	Minimum Mandatory State Share @ Rs per child per day	0

3	Transportation Cost @ Rs. Per MT food grains	
4	Honorarium for cook cum Helper	
4.1	Central Share - @ Rs for..... months)	0
4.2	State Share - @ Rs for..... months)	0
5	Management Monitoring and Evaluation (MME) @ 2.7% of the i) Cost of food grains ii) Cooking cost iii) Cost of transportation and iv) Honorarium to cook – cum-helpers	0
Total Central Share for Primary (Drought)		0
Upper Primary		
6	Cost of Food grains @ Rs. 3000 per MT for rice and Rs.2000 per MT for wheat	0
7	Unit Cooking Cost- Rs. 6.51 per child per day	
7.1	Central share @ Rs.per child per day	0
7.2	Minimum Mandatory State Share @Rs. per child per day	0
8	Transportation cost @ Rs Per MT food grains	0
9	Honorarium for cook cum Helper	
9.1	Central Share - @ Rs for..... months)	0
9.2	State Share - @ Rs for..... months)	0
10	Management Monitoring and Evaluation (MME) @ 2.7% of the i) Cost of food grains ii) Cooking cost iii) Cost of transportation and iv) Honorarium to cook – cum-helpers	0
Total Central Sharefor Upper Primary (Drought)		0
Total Primary + Upper Primary (Drought)		0

D. Non-recurring

Sl. No.	Component	Amount admissible (Rs in Lakh)
1	Kitchen-cum-store	
1.1	Central share -	0
1.2	Minimum Mandatory State Share -	0
2	Repair of kitchen-cum-store – 226 units	
2.1	Central share -	
2.2	Minimum Mandatory State Share	
3	Kitchen Devices (New)	
3.1	Central share -	0
3.2	Minimum Mandatory State Share -	0
4	Kitchen Devices (Replacement)- 140671 units	
4.1	Central share – (24612 units x Rs. 6000 + 83423 units x Rs. 9000 + 24983 units x Rs.12000 per units +7653 units x Rs.	13130.70

	15000 per units)	
4.2	Minimum Mandatory State Share - (24612 units x Rs.4000 + 83423 units x Rs. 6000 + 24983 units x Rs.8000 per units +7653 units x Rs. 10000 per units)	8753.80
Total Central Share (Non-recurring)		21884.50

E. Flexible funds for new interventions

(Rs in Lakh)

S. No.	Component	Centre Share	Minimum Mandatory State share	Total
1	Serving of MDM during regular school working days – from Table B	133542.08	78026.98	211569.06
2	Serving of MDM in Drought affected areas during summer vacations– from Table C	0.00	0.00	0.00
3	Total (1+2)	133542.08	78026.98	211569.06
4	Maximum admissible Funds for Flexibility for new interventions (5% of 3 above)	6347.07	4231.38	10578.45
PAB Approvals for flexible funds				
i)	School Nutrition (Kitchen) Gardens (30000 SNG @ Rs 5000 each)	900.00	600.00	1500.00
ii)	Chikki, Gur Patti & Besan ka Halwa for 211 days to 13,52,253 Primary and Upper primary enrolled children in 8 Aspirational districts	5447.07	3631.38	9078.45
Total of (E)		6347.07	4231.38	10578.45

F. Cost of Food-grains, Cooking cost, Transport Assistance for providing MDM or FSA during summer vacations as one time measure

Sl. No.	Component/norm	Amount admissible
		(Rs. in lakh)
1	2	3
Primary		
1	Cost of Food grains @ Rs. 3000 per MT for rice and Rs.2000 per MT for wheat	1064.14
2	Unit Cooking Cost- Rs. 4.97 per child per day	
2.1	Central Share @ Rs 2.98 per child per day	11876.93
2.2	Minimum Mandatory State Share @ Rs.1.99 per child per day	7931.24
3	Transportation Cost @ Rs150/ Per MT food grains	597.83
Total Central Share for Primary		13538.90
Upper Primary		
4	Cost of Food grains @ Rs. 3000 per MT for rice and Rs.2000 per MT for wheat	735.49
5	Unit Cooking Cost- Rs. 7.45 per child per day	
5.1	Central share @ Rs. 4.47 per child per day	8208.82
5.2	Minimum Mandatory State Share @ Rs 2.98 per child per day	5472.55
6	Transportation cost @ Rs.150/-Per MT food grains	413.20
Total Central Share for Upper Primary		9357.51
Total central share for primary and upper primary		22896.41

F. Total Requirement of Funds for 2020-21

(Rs. in lakh)

Component		Centre Share	Minimum Mandatory State share	
Recurring	Normal	133542.08	78026.98	211569.06
	Drought	0.00	0.00	0.00
Non- recurring		13130.70	8753.80	21884.50
Grand Total		146672.78	86780.78	233453.56
For summer vacations as one time measure		22896.41	13403.79	36300.20
Grand Total including summer vacations		169569.19	100184.6	269753.76

--oOo--