



Government of India
Ministry of Education
Department of School Education & Literacy



Report of 13th Joint Review Mission
PM POSHAN SCHEME

Telangana State

Districts : Khammam and Yadadri Bhuvanagiri

(21st to 26th November, 2022)

ACKNOWLEDGEMENT

The Thirteenth Joint Review Mission (JRM) Team 2022 would like to thank the Commissioner and Director of School Education, Government of Telangana for their support rendered in facilitating the Team to undertake the present Joint Review successfully. We would also like to thank Dr. R. Hemalatha, Director, ICMR-National Institute of Nutrition, Hyderabad for permitting NIN Research team to participate in the JRM -Telangana.

The members of the Mission acknowledge the support extended by the State PM POSHAN team and the District Education Officers of Khamman and Yadadri Bhongiri Districts and other officials. The team also gratefully acknowledge the help received from all the headmasters, PM POSHAN in-charges, other staff and Cook Cum Helpers and SMC members of the villages

Last but not the least, our thanks are also due to all the school children and their parents who were participated in the rapid evaluation and their full co-operation in the entire process of data collection on anthropometry, clinical examination for nutrition deficiency signs and food & nutrients consumption through hot cooked meals under PM POSHAN.

The JRM Team

**29th November 2022
HYDERABAD**

INDEX

CONTENT PAGE

Executive Summary

Good Practices observed

Areas of Concern

Recommendations

Acknowledgements

Chapter: 1 Overview of PM POSHAN Scheme

1.1 The Scheme

1.2 Inception of scheme

1.3 Legal Mandate

1.4 Objectives of the Scheme

1.5 Importance of the Scheme

1.6 Major components of scheme

1.7 Food and Nutrition norms under the Scheme

1.8 Finance Sharing pattern between Center and States under the Scheme

1.9 Initiatives towards greater quality

Chapter: 2 The Joint Review Mission

2.1 Need and objective of Joint Review Mission

2.2 Composition of the Joint Review Mission

2.3 Terms of references of the Joint Review Mission

2.4 Terms of Reference for Nutritional aspects:

Chapter: 3 Profile and Selection of Different Units for Visit of Joint Review Mission

3.1 Methodology

3.2 Sample Size

3.3 Investigations

Chapter :4 Trend analysis of the Implementation of PM Poshan in Telengana

4.1 Coverage of Schools

4.2 Coverage of working days in Primary school

4.3 Engagement of Cook cum Helpers in school

4.4 Payment of Honararium to cook cum helper

4.5 Food grain utilization

4.6 Utilization of material cost

4.7 Utilization of Transportation allowances

4.8 Utilization of Management Monitoring and evaluation

4.9 Development of school nutrition gardens

Chapter:5 Observations from the Field as Per The ToR

5.1 Review of the fund flow mechanism

5.2 Review of the coverage of the scheme

5.3 Review of the Management structure

- 5.4 Review the delivery mechanism of food grains from State to Schools
 - 5.5 Review the smooth implementation of the Scheme with particular reference to Interruptions
 - 5.6 Construction of Kitchen-cum-stores
 - 5.7 Procurement/Replacement of Kitchen Devices
 - 5.8 Review the convening the meetings of District Level Committee under Chairpersonship of senior most Member of Parliament (LS)
 - 5.9 Review the Management Information System (MIS)
 - 5.10 Convergence with Rastriya Bal Swasthya Karyakram
 - 5.11 Operationalization of Mid-Day Meal Rules, 2015
 - 5.12 Enrolment of children and Cook-cum-Helpers under Aadhaar
 - 5.13 Payment of Honorarium to Cook-cum-Helpers
 - 5.14 System of Storage food grains and other ingredients
 - 5.15 Role of Teachers in PM POSHAN Scheme
 - 5.16 Testing of meals
 - 5.17 Awareness of the Scheme
 - 5.18 School Nutrition Gardens
 - 5.19 Cooking Competitions
 - 5.20 Social Audit
 - 5.21 Mode of Fuel
 - Chapter: 6 Nutritional Evaluation of PM Poshan Scheme meal
 - 6.1 Methodology
 - 6.2 Investigations
 - 6.3 Data collection
 - 6.4 Results
 - 6.4.1 Coverage particulars
 - 6.4.2. Infrastructure facilities available at school
 - 6.4.3 Food and Nutrient intakes through PM Poshan Scheme
 - 6.4.4 *Organoleptic characters of PM Poshan Scheme meal*
 - 6.4.5 Nutritional status of Children: Anthropometric Indicators
 - 6.4.6 Perceptions of different stake holders
 - Chapter: 7 Summary And Recommendations
 - 7.1 Good Practices observed
 - 7.2 Areas of Concern
 - 7.3 Recommendations
- Annexure (Recipes)

Executive Summary

The Joint Review Mission visited 78 schools (40 in district of Khammam and 38 in Yadadri Bhuvanagiri) during 21-28 November, 2022 to review the implementation of PM Poshan Scheme in the State of Telangana. Anthropometric measurements of children were done in 44 schools (22 in district of Khammam and 22 in Yadadri Bhuvanagiri).

During the visits, the team collected information as per the Terms of References, held discussions and conduct in-depth interviews with the select stakeholders i.e. students, teachers, Cook-Cum-Helpers, community members, parents of the students and PM Poshan Scheme administrative functionaries of mandals of the above two districts as well as state officials.

The JRM team has covered 1919 children (in 1002 Khammam district and 917 in Yadadri district) for nutritional status assessment including anthropometric measurements, clinical examination for nutrition deficiency signs, food and nutrient intakes in the sub-sample of children. In-depth interviews were conducted among various PM Poshan Scheme functionaries in two districts on the various aspects of scheme implementation and opinion of children and their selective parents.

The analysis of data reveals that overall prevalence of stunting was 13% among boys and girls and it was marginally higher in Yadadri Bhuvanagiri (14%) compared to Khammam (12%). The overall prevalence of thinness was 25%; it was significantly higher among boys (31%) as compared to girls (19%) and higher in Yadadadri Bhuvanagiri district (29%) than Khammamdistrict (22%). Overall, the prevalence of overweight and obesity was 7% and it was marginally higher in girls (7.3%) and higher in Yadadri Bhuvanagiri district (7.3%) compared to Khammam (6.4%). About 4% of girls and 1.3% of boys were found to have goiter, with overall prevalence of 3%. Majority of the students and parents opined that the PM Poshan Scheme meal is very much beneficial to the students and that they are getting a variety of food groups in their daily week long menus.

The team has summarized recommendations which are feasible and practical with a higher objective to accrue maximum benefits out of the resources and efforts mobilized for the scheme. The team reiterates that besides nutritional adequacy of PM Poshan Scheme Meal, nutrition education, appropriately utilizing School Nutrition Gardens should serve as an effective tool for the child, teacher and parents.

The following good practices observed, areas of further improvements and recommendations which are feasible and practical are provided below:

Good Practices observed

- State has been providing eggs / bananas thrice a week by providing additional cost of Rs 5 per egg from its own resources.
- State has been providing meals to the students of classes IX & X from its own resources.
- Ragi java has been providing as breakfast in 5 mandals in Yadadri Bhuvanagiri district by Sri Satya Sai Trust.
- Divi's Laboratory has been providing benches, water coolers, water bottles for children, aprons for cook-cum-helpers in Yadadri Bhuvanagiri district.
- Periodically regular School Health programmes has been conducting State Health services as well as RBSK teams and they are providing IFA tablets, deworming tablets, and immunization services to the school going children.
- Women Self Help Groups have been engaged for providing meals in the schools.
- Super fine quality rice is being provided by the State and students are eating with good taste
- drinking water facility available to almost all schools under 'Mission Bhageeratha' and in almost all the school's toilet facilities are also available for the boys and girls separately.
- Daily PM Poshan Scheme meal testing register is maintained at almost all schools. Every day one teacher and one student has been tasting the meal and recording their opinion in the above registers.

Areas of Concern

- The Govt of India has increased the material cost (earlier known as cooking cost) w.e.f. 1st October, 2022 to Rs 5.45 per child per day in primary and Rs 8.17 per child per day in upper primary. However, in this State, still old rates only being followed (Rs 4.97 and Rs 7.45 per child per day for primary and upper primary, respectively).
- The PAB-PM POSHAN has approved the proposal of State to provide supplementary nutrition items i.e. i) Millet soup (Ragi Java) to 7.75 lakh children for 59 days in 16,828 schools in primary classes and ii) Sprouts with Jaggery to 4.48 lakh children for 61 days in 7277 schools in upper primary classes at an estimated expenditure of Rs 1370.62 Lakh, comprising of Rs 822.37 lakh as central share and Rs 548.25 lakh as State share. However, State Govt has not implemented the same as on date.
- About 25% of school children were suffering from undernutrition and it was high in Yadadri Bhuvanagiri district as compared to Khammam (22%).

- It was observed in the diet surveys, the norms macronutrients like energy 450Kcal/child/day for primary school children and 700Kcal/child/day of energy for upper primary school children are not meeting through the PM Poshan Scheme
- Most of the students and parents requested to provide eggs daily and some of them also requested to provide milk/butter milk daily, then only children eat enough food in the lunch.
- Almost all the CCHs informed that they did not receive any training programme on cooking methods, sanitation, hygiene and food safety aspects.
- The entitlement of nutrition norms of children, PM Poshan menu and its logo are not displayed in many of the schools visited at a prominent place.
- Most of the SMC members /chair/co-chairs/parents were not aware of food and nutrition norms and its entitlement.
- State has not yet conducted Social Audit.
- The food grains allocation system needs to be further strengthened as some schools are managing the scheme by borrowing rice from nearby schools, because they are not getting timely supply, at the same time some schools are having huge stocks.
- Kitchen devices have not been procured even after 2 and half year of release of central Govt. Funds.
- Kitchen-cum-stores not available in majority of the schools.
- Firewood was used for cooking in almost all the schools and lot of smoke is being accumulated in the premises.
- Monitoring at school level is not adequate, even though sometimes cluster resource persons, mandal education officers are visiting, but most of the times they are recording generic remarks about the scheme, not focusing on specific aspects.
- Schools are maintaining lot of records such as daily enrolment, daily social group wise attendance which can be avoided to reduce burden on the teachers. There is no uniform register for maintaining information on implementation of the Scheme. Different formats were also used in different schools, for record keeping.
- Emergency telephone numbers such as fire, police and Medical services were not displayed in prominent places in most of the schools.
- Storage bins were not available in majority of the schools for keeping food grains/vegetables/other cooking items

Recommendations

- State should adopt stringent mechanism to ensure that children receive the prescribed quantities of foodgrains, pulses, vegetables and other ingredients as per their entitlement.
- The entitlement of children, PM Poshan logo and PM Poshan menu should be painted at a prominent place in the school premises.
- It was observed that on three days in a week, there is no inclusion of pulses in the Poshan menu. Pulses should be provided daily as per the norms under the PM POSHAN in various forms to get quality protein daily.
- It was observed in the diet surveys, the norms macronutrients like energy 450Kcal/child/day for primary school children and 700Kcal/child/day of energy for upper primary school children are not meeting through the PM Poshan Scheme. Steps may be taken to ensure that the children should get adequate/stipulated energy under the scheme.
- Periodical orientation training may be arranged for Members of School Management Committees on the PM Poshan Scheme objectives, nutrition norms and entitlements of children under the scheme to enable them to monitor the programme in a better manner.
- Since most of the students and parents requested to provide eggs daily and some of them also requested to provide milk/butter milk daily, then only children eat enough food in the lunch, the authorities may look into these aspects for its feasibility implementation.
- Training of CCHs on cooking methods, sanitation, hygiene and food safety aspects.
- Social Audit to be conducted in all districts as per the PM POSHAN Scheme guidelines.
- Kitchen devices to be procured immediately.
- Construction of kitchen-cum-stores to be completed on priority basis.
- Storage bins for safe storage of food grains may be provided to all schools.
- State level/District level officials should also visit in a samples of schools regularly to oversee the implementation of scheme.
- State Government may also constitute a State Level Review Missions to oversee the overall implementation of the scheme.
- State may also constitute a monitoring and supervision (5-6 officers from State/ Districts/ Mandal levels) for concurrent monitoring and supervision of the scheme.
- LPG connections may be provided to the schools as all the schools are using fire wood for cooking.

- Emergency numbers such as police, fire and medical should be painted on school walls on prominent places
- A simple format may be devised for keeping records of important components of the scheme and these may be circulated to schools, to ease out the burden on teachers and also for uniformity of record keeping and ease of data maintenance.
- Awareness generation of the Scheme may be carried out by publicity through print and electronic media and with judicious use of social media.
- Kitchen garden developed by some schools should be replicated in other school wherever it can be possible.
- Millets may be included in the menu once in a week.
- Training and sensitization of cook-cum-helpers and officials at different level.
- Honorarium to cook cum helper needs to be increased as it is difficult to engage CCH with the present honorarium.
- Sensitization of teachers, and officials at different levels.

Chapter 1: Overview of PM POSHAN Scheme

1.1 The scheme

Pradhan Mantri Poshan Shakti Nirman (PM POSHAN) Scheme earlier known as ‘National Programme for Mid-Day Meal in Schools’ is one of the foremost rights based Centrally Sponsored Scheme covered under National Food Security Act, 2013. National Food Security Act, 2013 (NFSA) provides for Right to Food, i.e. food and nutritional security through human life cycle approach. The PM POSHAN Scheme covers all school children studying in Bal Vatika (just before class I) and Classes I-VIII of Government and Government-Aided schools. About 12 crore children studying in about 11 lakh institutions have been benefitted under the Scheme.

1.2 Inception of scheme

The erstwhile MDM Scheme was launched on 15th August 1995 with the objective to increase enrolment, attendance and retention of children studying in primary classes (I-V) in Government and Local Body Schools in 2408 blocks and through providing the food-grains for nutritional support to them. The Scheme was universalised to all the blocks in 1997-98. The cooked mid-day meal was started under the Scheme on the directions of Hon’ble Supreme Court order dated 28th November, 2001. The coverage of the scheme was extended to upper primary classes in 2008-09.

1.3 Legal Mandate

National Food Security Act, 2013 provides that every child up to the age of fourteen years shall have the entitlements for his / her nutritional needs. Section 5 (1) (b), inter-alia, reads as under:

“in the case of children, up to class VIII or within the age group of six to fourteen years, whichever is applicable, one mid-day meal, free of charge, every day, except on school holidays, in all schools run by local bodies, Government and Government aided schools, so as to meet the nutritional standards specified in Schedule II.”

Schedule II of the NFSA, 2013 mandates provision of hot cooked meal containing 450 calories and 12 gms protein for primary and 700 calories and 20 gms protein for upper primary class children.

1.4 Objectives of the Scheme

The objectives of the PM POSHAN Scheme are to address two of the pressing problems for majority of children in India, viz. hunger and education by:

- Improving the nutritional status of children studying in classes Bal Vatika (just before class I) and I – VIII in Government and Government-Aided Schools.
- Encouraging poor children, belonging to disadvantaged sections, to attend school more regularly and help them concentrate on classroom activities.
- Providing nutritional support to children of elementary stage in drought-affected areas during summer vacation and in disaster affected areas.

1.5 Importance of the Scheme

There are evidences to suggest that apart from enhancing school attendance and child nutrition, this scheme has a very important in fostering social values and equality. The Scheme is also very significant in terms of the following aspects:

- Preventing classroom hunger:** National Education Policy observes that children are unable to learn optimally when they are undernourished or unwell. Many children belonging to disadvantaged sections of society reach school with an empty stomach. Even children, who have a meal before they leave for school, get hungry by the afternoon and are not able to concentrate. The Scheme help the children from families which cannot afford a lunch box or are staying far away from schools, to overcome “classroom hunger”.
- Promoting school participation:** The Scheme has a significant effect on school participation alongwith better enrollment and enhanced attendance.
- Facilitating healthy growth of children with intrinsic educational values:** The Scheme acts as a regular source of “supplementary nutrition” for children and facilitate their healthy growth. It also helps in imparting good habits like hand washing and educates them about clean water and good hygiene etc.
- Fostering social equality and enhancing gender equity:** The Scheme helps in spreading egalitarian values, as children from various social backgrounds learn to sit

together and share a common meal. In particular, it helps to break the barriers of caste and class among school children. The Scheme helps girls to attend school and thus reduces gender gap. The Scheme also provides gainful employment for women.

iv. Cognitive and Wellness Benefits: Physiological deprivation leads to low self-esteem, consequent insecurity, anxiety and stress. The Scheme can help address these and facilitate cognitive, emotional and social development.

1.6 Major components of scheme

- 1) **Food Grains:** Supply of food grains @ 100 grams per child per school day for primary and 150 grams for upper primary through Food corporation of India @ subsidised rates of Rs 2 per kg for wheat and Rs 3 per kg for rice.
- 2) **Material Cost:** Previously known as cooking cost, It includes cost of ingredients, e.g. pulses, vegetables, cooking oil and other condiments. It also includes cost of fuel. At present the cooking cost is Rs 5.45 for primary and Rs 8.17 for Upper primary.
- 3) **Honorarium to Cook-cum-helpers (CCH):** There is provision of honorarium of Rs. 1000 to each CCH per month for 10 months in a year.
- 4) **Transportation Assistance:** Transportation Assistance is provided to States and UTs for transportation of food grains from FCI godown to the school level. At present the Transportation Assistance is at par with PDS rates or maximum of Rs. 1500 per MT, whichever is less for transportation of food grains from FCI godown to school except 8 NER and 2 Himalayan States and UTs, where it is at par with PDS rates.
- 5) **Management, Monitoring and Evaluation (MME):** MME funds are provided @ 3% of cost of food grains, cooking cost, honorarium to CCH and transportation assistance. 50% of the MME funds are earmarked for school level expenses. These funds may be used for Supervision, Social Audit and other monitoring activities etc.
- 6) **Kitchen-cum-store:** There is provision of kitchen-cum-stores for cooking of meals in hygienic manner. Construction of Kitchen-cum-stores has been linked with the enrolment in schools (20 sq. meter for schools having enrolment of up to 100 students, and addition of 4 sq. meter for every addition of up to 100 students) and State Schedule of Rates.
- 7) **Kitchen devices:** Kitchen devices are provided to schools for procuring utensils for cooking and serving of meals to children. It is linked with enrolment as detailed below:

Enrolment (No. of Children) per school	Unit Cost (In ₹)
Up to 50	10,000
51-150	15,000
151-250	20,000
251 & above	25,000

- 8) **Repair of kitchen-cum-stores: Rs 10,000/-** per unit, for the kitchen-cum-stores, which were constructed 10 years ago.
- 9) **Innovation / Flexibility component with no separate budgetary support:** Five percent of the aggregate of the cost of foodgrains, cooking cost, transport assistance, honorarium to cook-cum-helpers, and MME with no separate additional budgetary support for this component. This component may be used mainly for provision of supplementary nutrition items in aspirational districts or districts having higher prevalence of malnutrition and development of School Nutrition Gardens in schools.

1.7 Food and Nutrition norms under the Scheme

For children of Bal Vatika and primary classes, a hot cooked meal per child consists of 100 grams of food grain (rice/wheat/nutri-rich cereals), 20 grams of pulses, 50 grams of vegetables and 5 grams of oil/fat to provide 450 calories of energy and 12 grams of protein. For children of upper primary classes, it consists of 150 grams of food grain (wheat/rice/nutri-rich cereals), 30 grams of pulses, 75 grams of vegetables and 7.5 grams of oil/fat per child to provide 700 calories of energy and 20 grams of proteins.

Nutrition and food norms - Per child per day

S. No.	Items	Primary	Upper Primary
A) Nutritional Norms as per National Food Security Act (NFSA), 2013			
1	Calorie	450	700
2	Protein	12 gms	20 gms
B) Food Norms			
1	Food grains	100 gms	150 gms
2	Pulses	20 gms	30 gms
3	Vegetables	50 gms	75 gms
4	Oil & fat	5 gms	7.5 gms
5	Salt & condiments	As per need	As per need

Micronutrients like IFA etc and de-worming medicines are provided in convergence with M/H&FW

1.8 Finance Sharing pattern between Center and States under the Scheme

Under the Scheme, the Central Government provides 100% Assistance towards i) cost of food grains, ii) transportation cost and iii) Monitoring, Management and Evaluation (MME).

The expenditure towards Material cost, honorarium to cook-cum-helpers, cost of the construction of kitchen-cum-stores, cost for procurement of kitchen devices, cost for repair of kitchen-cum-stores and cost towards flexi component is shared between the Centre and the NER States & Himalayan States on 90:10 basis, 100% for UTs without legislature and with other States and UTs with Legislature on 60:40 basis.

1.9 Initiatives towards greater quality

In the revised Scheme, a lot of emphasis is on achieving greater quality by involving community and enhanced supervision. Following are some of the initiatives:

- i) **Usage of locally grown food items** like millets, vegetables, condiments etc. will be systematically undertaken by states/UTs under the Scheme. This not only promotes nutrition through local traditional food items, but it also contributes to local economic growth.
- ii) **Social Audit** in all districts is made mandatory. Social Audit is collective monitoring of a scheme by people's active involvement covering issues of equity, equality and expenditure management.
- iii) The concept of **Tithi Bhojan** is being encouraged extensively. Tithi Bhojan is a community participation programme in which people provide special food to children on special occasions/festivals.
- iv) **Development of School Nutrition Gardens** in all schools and produce be used in cooking the meal in schools
- v) Enhanced involvement of Farmers' Producers Organizations (FPO), Women's Self-Help Groups (SHG) etc. in implementation of Scheme.
- vi) **Provision for supplementary nutrition** in aspirational districts / districts with identified high cases of malnutrition etc.

- vii) Strengthening of the existing system of **tasting of meals** by parents / teachers / community members before serving to children
- viii) **Organization of cooking competitions** in order to motivate cook-cum-helpers towards use of locally available food material and to promote variety menu.
- ix) **Field inspections** by students of eminent Universities / Institutions and also trainee teachers of District Institute of Education Training and Regional Institutes of Education, for enhanced monitoring of implementation of scheme at field level.

Chapter 2: The Joint Review Mission

2.1. Need and objective of Joint Review Mission

Under-nutrition is one of the most important constraints in achieving the Sustainable Development Goals. Consequences of under-nutrition and hidden hunger are very serious on health and nutrition status leading to negative economic growth of the country.

PM POSHAN Scheme is one of world's biggest school meal programme and is being implemented all over India for primary and upper primary school children. It addresses to the nutritional requirement of children and simultaneously has an important role to address the multiple challenges of poverty, hunger, and access to education. On all school days meals are served to more than 10 crore children studying in about 11 lakh schools spread across this vast nation.

For a programme with such magnitude, continuous monitoring is paramount. Joint Review Mission is one of the many initiatives adopted by the Govt of India to monitor the implementation of the Scheme across the country. The JRM review the implementation of the Scheme on a defined Terms of References (ToR).

2.2. Composition of the Joint Review Mission

The composition of the 13th JRM for the State of Telangana is as under:

- i Dr. A. Laxmaiah, Scientist G and Head, Public Health Nutrition, ICMR-National Institute of Nutrition – Team Leader
- ii Shri. G. Vijaya Bhaskar, Director (PM POSHAN), DoSE&L, MoE, Govt. of India– Member
- iii Mrs. A. Sridevasena, Director (School Education), Govt of Telangana – Member(Not attended)
- iv Dr N. Arlappa, Scientist F, Public Health Nutrition, ICMR-NIN-Hyderabad - Member
- v Representative of UNICEF – Member(Not attended)
- vi Shri Bhupendra Kumar, Chief Consultant, TSG-PM POSHAN – Member
- vii Shri Dinesh Pradhan, Senior Consultant, TSG-PM POSHAN – Member

The 13th Joint Review Mission in Telangana State was also assisted by Dr. Anwar Basha (Scientist B), Mr. K. Sree Ramakrishna (T.O), Ms. G. Neeraja (T.O), and Mr. PV. Sunu

(T.O), as Research Assistants from Division of Public Health Nutrition, ICMR-National Institute of Nutrition, Hyderabad, during its visit to Khammam and Yadadri Bhuvanagiri districts for monitoring the implementation of PM POSHAN Scheme as per the defined terms of reference.

2.3. Terms of references of the Joint Review Mission

- i Review the fund flow from State to Schools/implementing agencies.
- ii Review the coverage of the Scheme
- iii Review the availability of Management Structure at State, District, Block level
- iv Review the delivery mechanism of food grains from State to Schools
- v Review the smooth implementation of the Scheme with particular reference to Interruptions.
- vi Review the Creation of Capital Assets
- vii Construction of Kitchen-cum-stores
- viii Procurement/Replacement of Kitchen Devices
- ix Review the involvement of NGO's/Trust/Centralized kitchens in the Scheme
- x Review the payment of Cost of Food grains to Food Corporation of India
- xi Review the convening the meetings of District Level Committee under Chairpersonship of senior most Member of Parliament (Lok Sabha).
- xii Review the Management Information System (MIS)
- xiii Review the implementation of Automated Monitoring System
- xiv Convergence with Rastriya Bal SwasthyaKaryakram for health check-up, supplementation of micronutrients under WIFS & de-worming against intestinal parasite under National de-worming day and health check-ups and supply of spectacles to children suffering from refractive errors.
- xv Review the following
 - a. Operationalization of Mid-Day Meal Rules, 2015
 - b. Dissemination of Food Safety Guidelines up to District, Block and School
 - c. Enrolment of children and Cook-cum-Helpers under Aadhaar
 - d. Payment of Honorarium to Cook-cum-Helpers
 - e. System of Storage food grains and other ingredients
 - f. Role of Teachers in PM POSHAN Scheme.
 - g. Tasting of meals by Teacher, Parents and Community.

- h. Testing of meals
- i. Involvement of Community
- j. Bank Account of Cook-cum-helpers
- k. Awareness of the Scheme
- l. Contingency Plan

2.4 Terms of Reference for Nutritional aspects:

- a) To assess the anthropometric measurements of a sample of children availing meals under PM POSHAN Scheme
- b) Height ii. Weight iii. Mid arm Circumference
- c) To Calculate the Body Mass Index (BMI) on the basis of measurement of height and weight.
- d) To identify the children who are undernourished and over nourished.
- e) To review the quality and quantity of the served meals.
- f) To review the satisfaction of the children parents and community on the served meal under PM POSHAN Scheme in respect of quality and quantity.
- g) To suggest some nutritionally balanced region-specific recipes.

Chapter 3: Profile and selection of different units for visit of Joint Review Mission

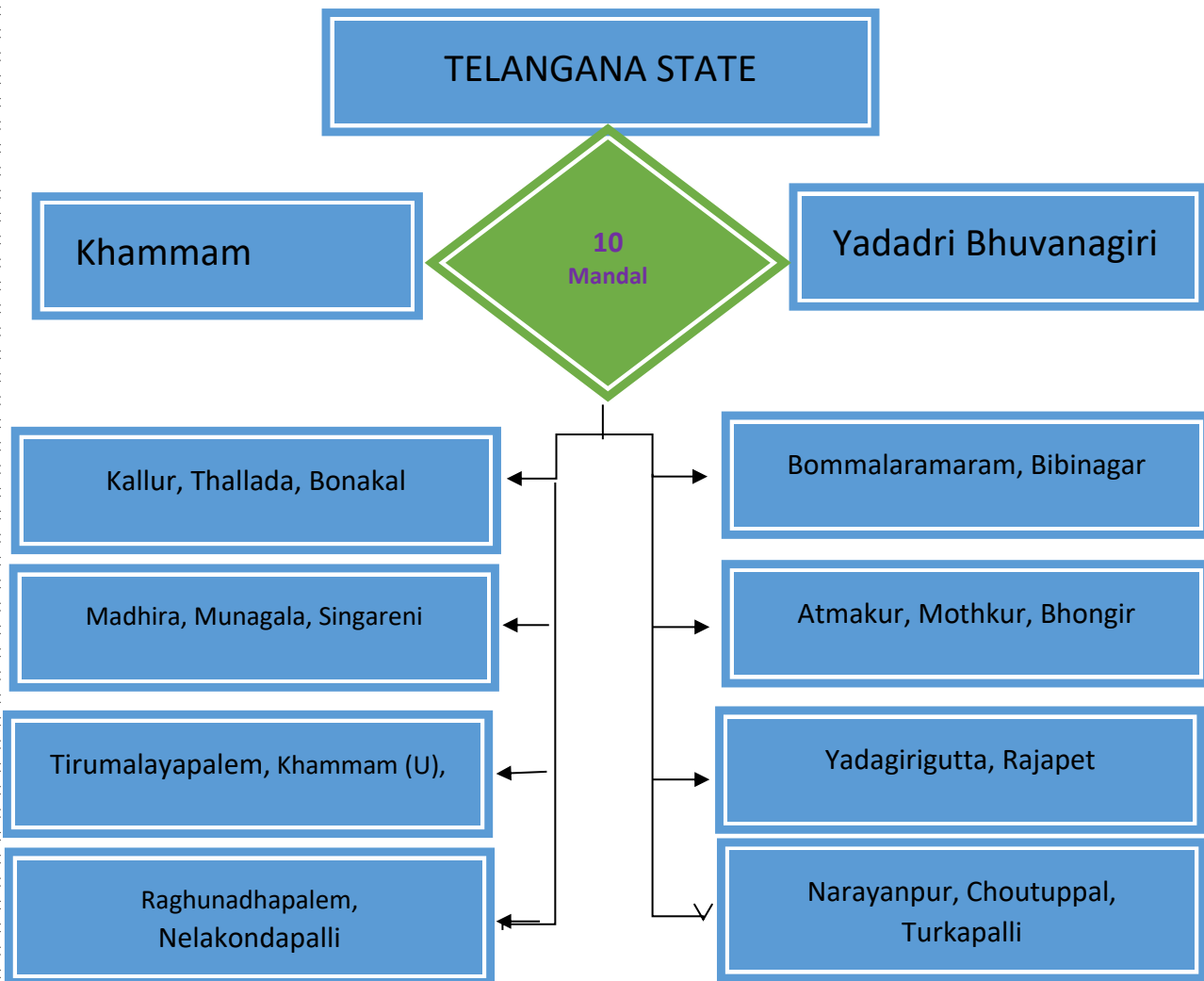
3.1. METHODOLOGY

The study was conducted in the primary and upper primary government run schools, where the PM Poshan Scheme is in operation. Two districts viz. Khammam and Yadadri Bhuvanagiri were selected for the 13th JRM review, by the Ministry of Education, GoI. In each district, 10 mandals were randomly selected. The selected blocks in Kammam district, were namely Kallur, Bonakal, Madhira, Thallada, Tirumalayapalem, Raghunadhapalem, Kamma-Urban, Siongareni and in Yadadri Bhuvanagairi district, Bommalamaram, Bibinagar, Atmakur, Mothkur, Bhongiri, Narayanpur, Yadagirigutta, Rajapet, Nelakondapalli, Turkapalli, Choutuppal.

3.2. Sample Size:

In order to get required sample of children for statistical analysis, 1919 children were covered from 44 schools (Kammam 22, Yadadri Bhuvanagiri 22) from 10 mandals from each of districts, Kammam (n=917), and Yadadri Bhuvanagiri (n=1002) selected for the purpose. Out of 44 schools covered, 55% were Primary and 45% Upper Primary schools. Various aspects of the implementation of the PM POSHAN Scheme was studied in detail from the children enrolled in the classes' I-VIII as well as their parents, teachers, members of SMC and other functionaries.

STUDY DESIGN



From each mandal, 2-4 schools and 4 boys and 4 girls from each class were covered for anthropometric measurements, clinical examination and history of morbidity during previous 15 days.

Institutional diet survey was carried out in 2 Primary and 2 Upper primary schools in both the districts.

3.3. Investigations

3.3.1. Nutritional Status Assessment:

Anthropometry: Anthropometric measurements such as height, weight was carried out by the NIN team using standard procedure and equipment. Clinical examination for any nutritional deficiency signs such as Bitot's spot, fluorosis, caries, goiter etc. was carried out.

Height for age and BMI for age were used as nutrition indices for assessing nutritional status of children by using WHO growth standards 2007.

Weight: SECA weighing scale was used for measuring weight (Kg) of children at an accuracy of 100g. The balances were calibrated and standardized daily before weighing the children. Children were asked to remove their shoes and stand straight on the weighing balance.

Height: Height of the children was measured using anthropometer rod. Children were asked to remove their shoes and headgear and were asked to stand straight with heels touching together and looking straight ahead, head held comfortable erect, and arms hanging loosely by the sides.

BMI: Body Mass Index (BMI) was calculated using the following formula:

$$\text{BMI} = \text{Weight (Kg)} / \text{Height (m}^2\text{)}$$

Age: It is important to know the child's age in complete months for calculating the anthropometric indices in order to assess their nutritional status using anthropometry. This information was collected from the school admission registers.

3.3. Anthropometric Indices:

Height-for-age: Height-for-age reflects long term nutritional status. Low height for age is known as stunting. Thus, stunting indicates chronic undernutrition.

BMI for age: Low BMI for age is known as thinness. Thinness serves as an indicator of short-term under nutrition.

Table 6: Anthropometric Indicators for Nutritional Status Assessment

Anthropometric Indices	Nutritional grades
Height for Age	<-3SD- Severe Stunting
	-3SD to -2SD- moderate Stunting
BMI for Age	<-3 SD- Severe Thinness
	-3SD to -2SD- Moderate Thinness
	-2SD to +1SD- Normal
	+1SD to +2SD- Overweight
	>+2SD Obese
	>+3SD Morbidly Obese

Diet survey and children's perceptions regarding the MDM:

Institutional diet survey was conducted in 4 schools to measure the quantity and quality of food intakes by the school children. The data pertaining to the number of meals consumed and the dietary pattern was collected for 497 children.

The following information was collected about PM POSHAN:

- The children's perceptions regarding the PM POSHAN Scheme and their preferences of various foods served in the PM POSHAN was collected through a detailed questionnaire.
- A Semi structured proforma was used for obtaining information regarding the menu, quality as well as quantity of Meal served under PM POSHAN Scheme in the schools.
- The parents (who came on request) as well as the teachers' perceptions of the PM POSHAN scheme was assessed using a structured and pretested questionnaire
- The cook-cum-helpers (CCH) were also interviewed about the quality and quantity of ingredients used for the preparation as well as serving of food on a daily basis.
- The teachers and the principals' views on the implementation of the PM POSHAN was collected.
- Data pertaining to the number of children enrolled and the attendance of the students in the school along with the number of beneficiaries of PM POSHAN was collected.
- Information was also collected about the taste of the meals by the teachers, maintenance of the tasting and other registers, kitchen facilities, storage of the grains and quantity of food cooked on the day of the visit.
- Information was collected from the head teachers as per the records maintained for cook-cum-helpers and maintained at schools. Spot observations were also made regarding the aspects related to safety, hygiene, cleanliness etc.
- **Data Analysis:** Data analysis was done using Microsoft Excel and SPSS Version 22. WHO Anthro Plus software used for analysis of anthropometric data. Mean \pm SD for continuous variables and proportion for other variables were carried out.

Chapter – 4 : Trend analysis of the implementation of PM POSHAN in Telangana

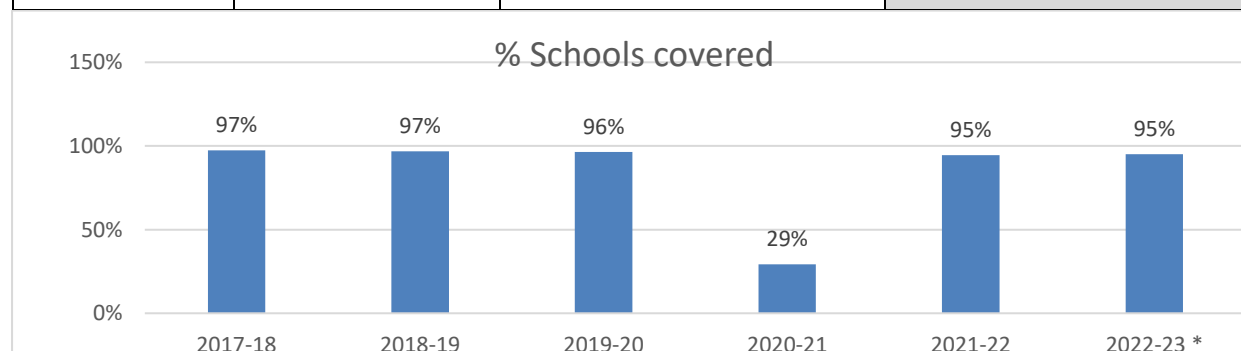
Trend analysis of the implementation of PM POSHAN in Telangana 2017-18 to 2022-23 :

This chapter attempts to analysis the data on important parameters in implementation of PM POSHAN scheme in Telangana over the years. In this context, it is important to mention here that during the closure of schools due to COVID-19 pandemic, the Central Government has issued advisories to all States to provide Food Security Allowance to all eligible children in lieu of hot cooked meals. However, in the State of Telangana Food Security Allowance was not provided to children under PM POSHAN Scheme. Since primary schools remain closed during 2020-21, none of the enrolled children could be covered under the Scheme. At the upper primary level, schools were opened for only 22 days.

4.1 Coverage of Schools

There are 28606 Govt and Govt Aided schools having classes I-VIII in the State. Out of which 27202 are covered under PM POSHAN Scheme. As informed by the State Government 1404 schools have zero enrolment and thus not covered. During 2020-21, primary schools remain closed due to COIVD-19 pandemic and only upper primary schools were opened. The details of year-wise coverage of Schools in the State of Telangana are as under :-

Year	Total Schools	Schools covered under PM POSHAN	% schools covered
2017-18	28623	27896	97%
2018-19	28623	27732	97%
2019-20	28333	27329	96%
2020-21	28636	8357	29%
2021-22	28963	27380	95%
2022-23 *	28606	27202	95%



*upto 2nd quarter of 2022-23.

Coverage of Children

As is elucidated in the previous chapters, under PM POSHAN Scheme hot cooked meals are served to children studying in classes Bal Vatika and I-VIII in Govt and Govt aided schools.

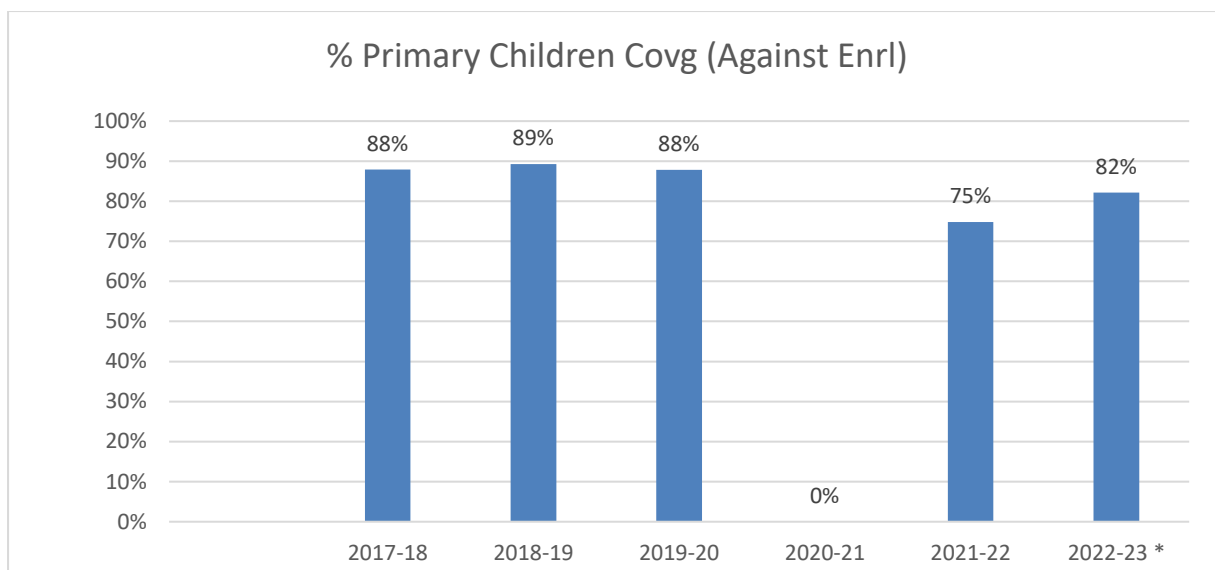
4.1.1 Coverage of Children in Primary

The information on number of children availed hot cooked meals reveals that during the period preceding the pandemic times i.e. till 2019-20 on an average about 88% of the enrolled children have availed hot cooked meals in eligible schools. However, the coverage has gone down significantly to 75% during 2021-22. There is a slight improvement as during 2022-23, on an average 82% children are availing hot cooked meals in schools. During the closure of schools due to COVID-19 pandemic, the Central Government has issued advisories to all States to provide Food Security Allowance to all eligible children in lieu of hot cooked meals. However, in the State of Telangana Food Security Allowance was not provided to children under PM POSHAN Scheme. Since primary schools remain closed during 2020-21, none of the enrolled children could be covered under the Scheme. The year wise coverage of children vis-à-vis enrolment is given below:

Year	Primary (I to V) Children		% Primary Children Covg (Against Enrl)
	Enrolment	Coverage	
2017-18	1193149	1048493	88%
2018-19	1193149	1065382	89%
2019-20	1136170	997690	88%
2020-21	1121789	0	0%
2021-22	1122390	839893	75%
2022-23 *	1412161	1160231	82%

* till 2nd Qtr

A perusal on the data above reveals that there is a significant increase of about 2.9 lakh children in the enrolment in primary section. The increase in enrolment is primarily due to shifting of children to Govt schools from private school during the post pandemic scenario.

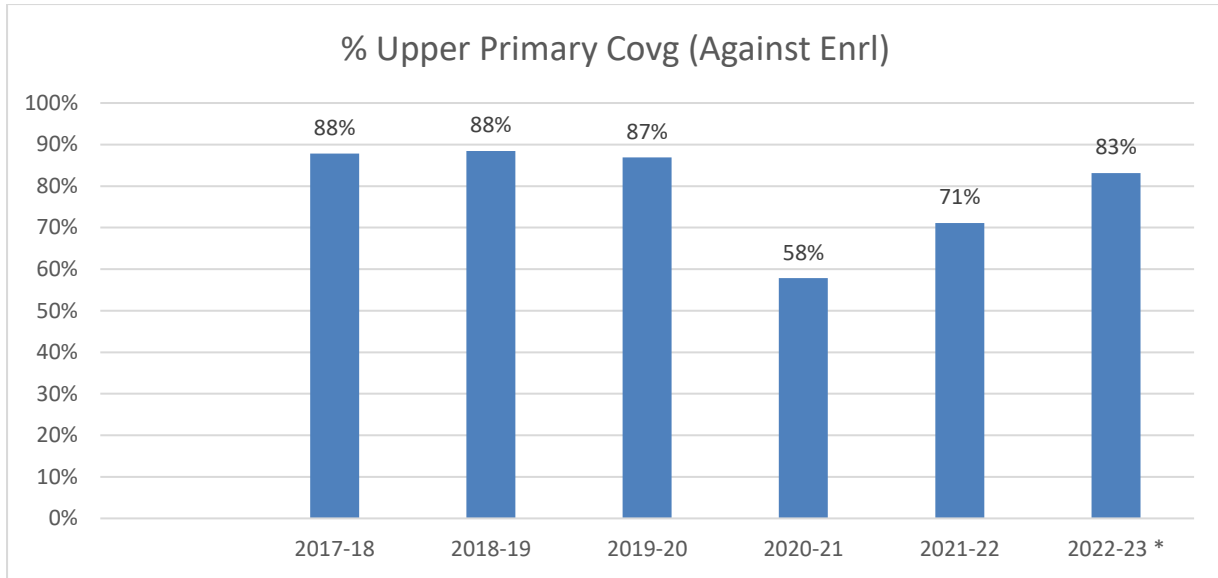


4.1.2 Coverage of children in Upper Primary

Likewise the coverage of primary children, there is a sharp decline in coverage of children vis-à-vis enrolment in the upper primary section also. The schools were opened only for 22 days for upper primary section and during this period about 58% of the enrolled children availed hot cooked meals in schools. In 2021-22, only about 71% children have availed meals on an average basis. The coverage has improved to 83% of the enrolled children during 2022-23, still is about 5% less than the pre-pandemic times. The coverage details over the years are given below:

Upper Primary (VI-VIII)			
Year	Children		% Upper Primary Covg (Against Enrl)
	Enrolment	Coverage	
2017-18	720719	633096	88%
2018-19	720719	637565	88%
2019-20	659786	573354	87%
2020-21	630625	364641	58%
2021-22	668357	475403	71%
2022-23 *	687678	571873	83%

* till 2nd Qtr



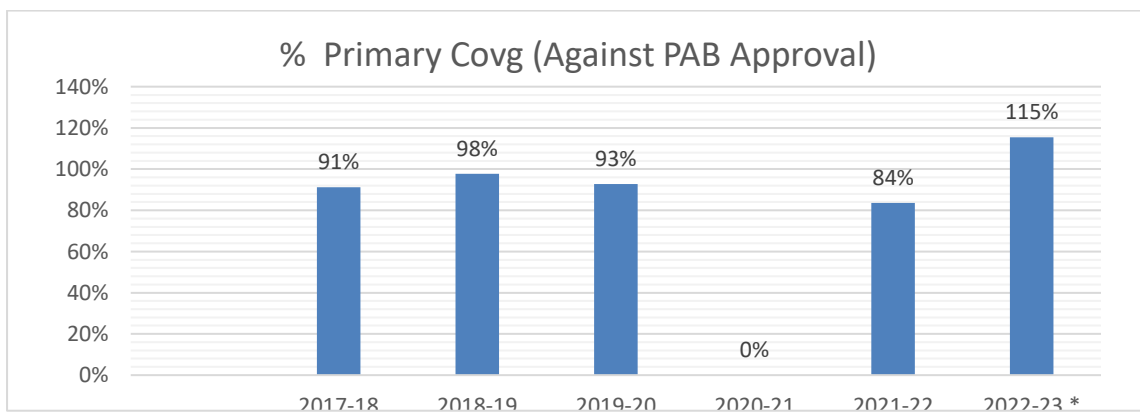
* Upto 2nd quarter

Coverage of Primary children against the PAB approval

State has covered more children than the PAB approval during 2022-23.

Primary (I to V)			
Year			% Primary Covg (Against PAB Approval)
	PAB Approval	Coverage	
2017-18	1150000	1048493	91%
2018-19	1091000	1065382	98%
2019-20	1075656	997690	93%
2020-21	1005000	0	0%
2021-22	1005000	839893	84%
2022-23 *	1005000	1160231	115%

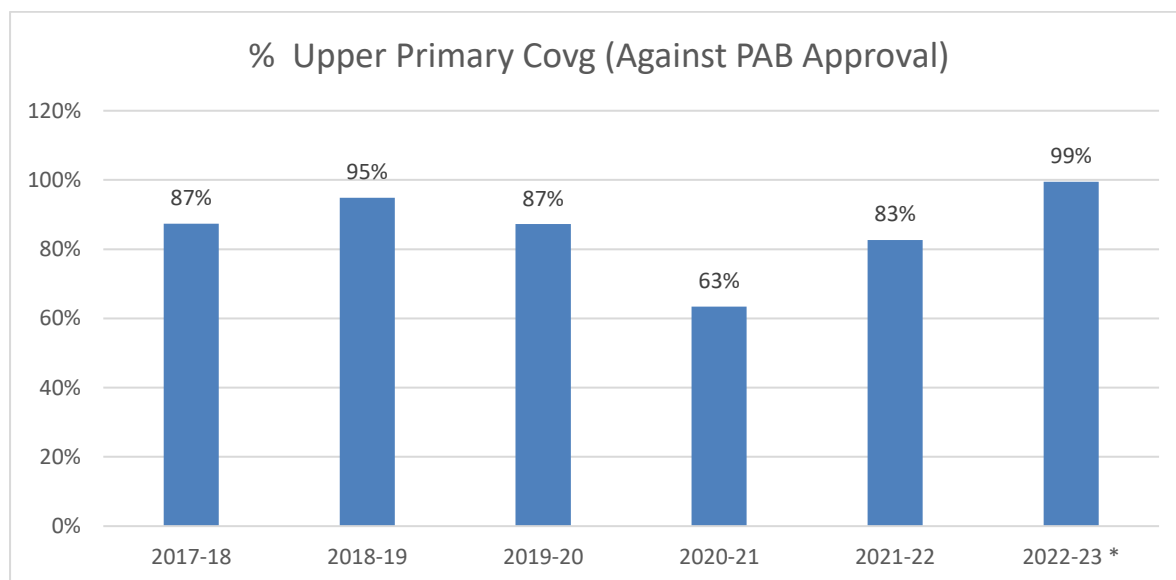
* till 2nd Qtr



Coverage of Upper Primary children against the PAB approval

Upper Primary (VI-VIII)			
Year	PAB Approval	Coverage	% Upper Primary Covg (Against PAB Approval)
2017-18	725000	633096	87%
2018-19	672000	637565	95%
2019-20	657000	573354	87%
2020-21	575000	364641	63%
2021-22	575000	475403	83%
2022-23 *	575000	571873	99%

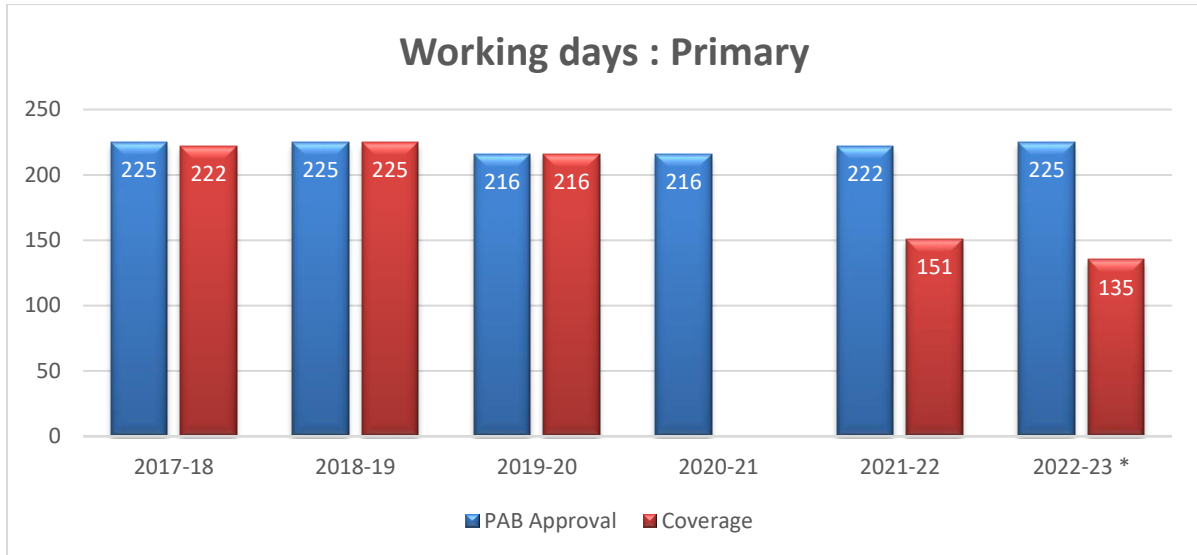
* till 2nd Qtr



4.2 Coverage of working days in Primary

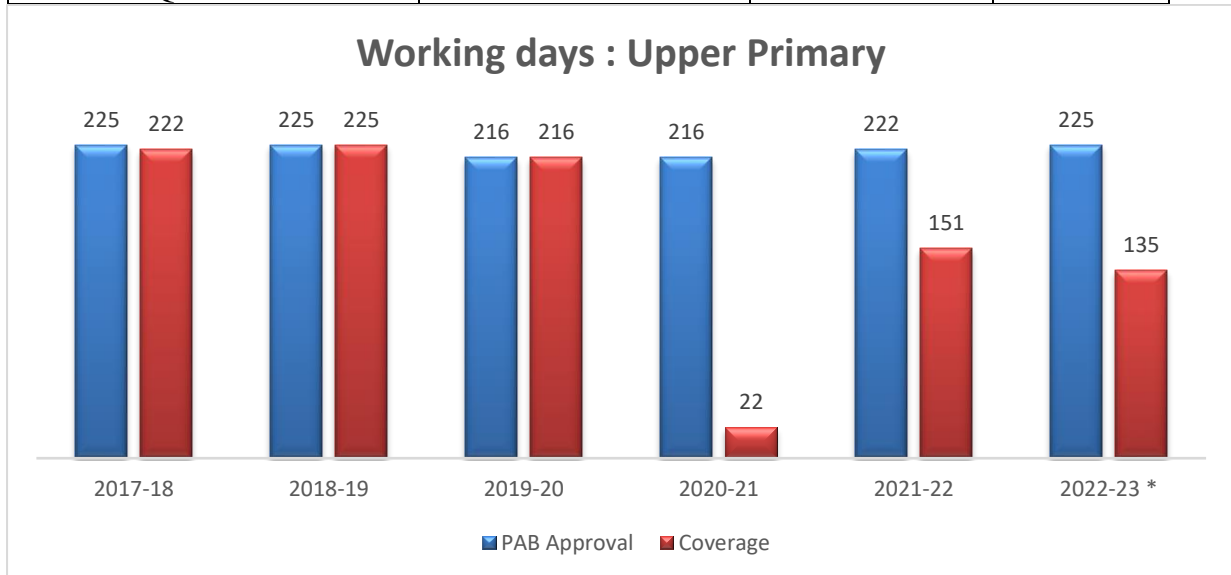
Year-wise coverage of working days in primary level is given below:

Primary (I to V)			
Year	PAB Approval	Coverage	% Covg
2017-18	225	222	99%
2018-19	225	225	100%
2019-20	216	216	100%
2020-21	216	0	0%
2021-22	222	151	68%
2022-23 (as on 24.11.2022)	225	135	60%



Year wise coverage of working days in upper primary level is given below:

Upper Primary (Vi-VIII)			
Year	PAB Approval	Coverage	% Covg
2017-18	225	222	99%
2018-19	225	225	100%
2019-20	216	216	100%
2020-21	216	22	10%
2021-22	222	151	68%
2022-23 *	225	135	60%
As on 2 nd Qrt			

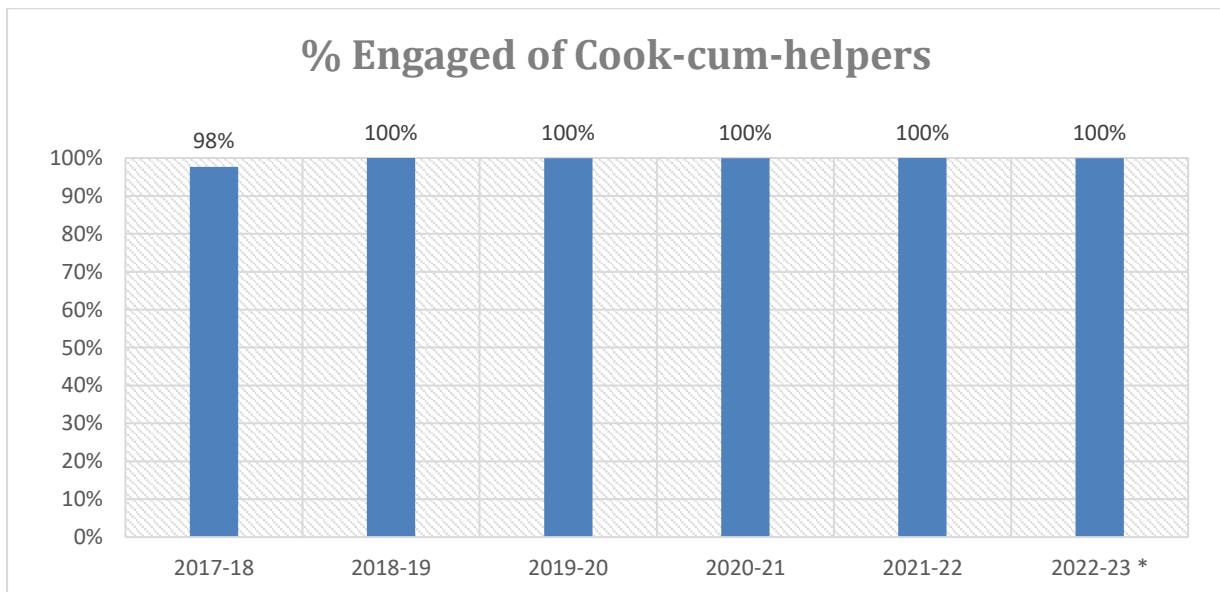


During 2020-21, in Upper Primary opened for only 22 days' schools, whereas, in 2021-22, schools were opened from September 2021 onwards.

4.3 Engagement of Cook-cum-helpers in schools

The engagement of the cook-cum-helpers for the preparation of hot meals at schools was 100% engagement. The year-wise details are given below: -

Cook-cum-helpers			
Year	PAB Approval	Engaged	% Engaged of Cook-cum-helpers
2017-18	54232	52961	98%
2018-19	54232	54232	100%
2019-20	54232	54201	100%
2020-21	54232	54201	100%
2021-22	54232	54232	100%
2022-23 *	54232	54201	100%
* till 2nd Qtr			

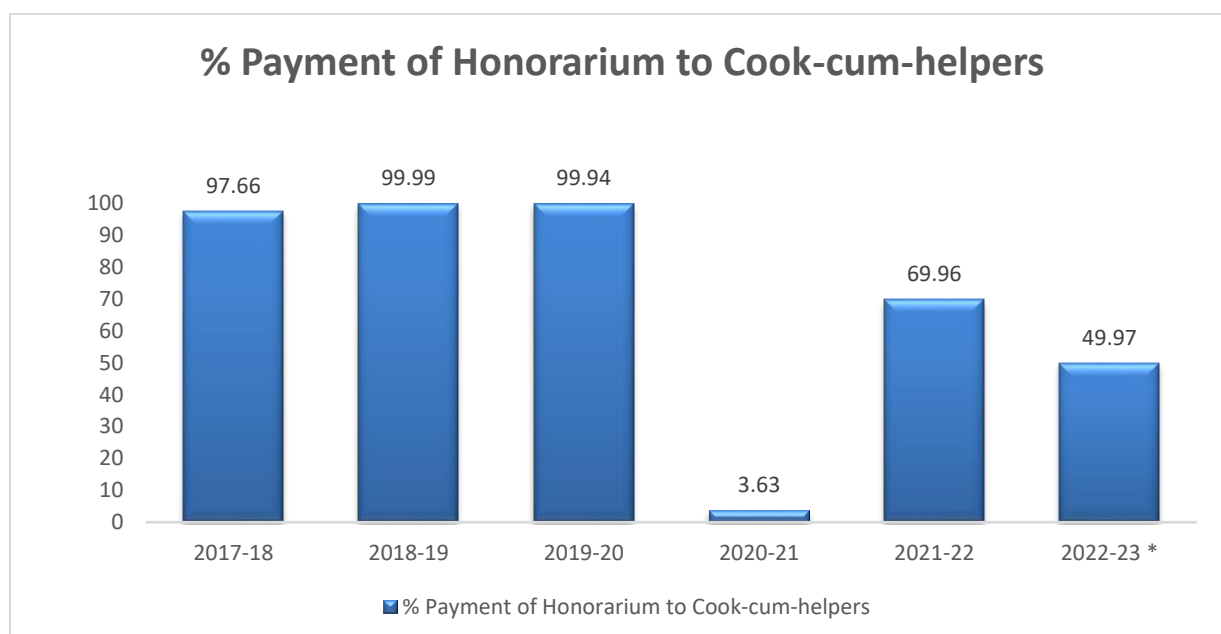


4.4 Payment of Honorarium to Cook-cum-helpers

State Govt. is making the payment of honorarium to cook-cum-helpers on monthly basis Rs. 1000/- per cook-cum-helper. During 2020-21 primary schools remain closed for entire year and upper primary schools opened for 22 days only. Thus resulting in less utilisation of funds towards honorarium to CCH. The year wise utilization of payment to cook-cum-helpers are given below:

Year	Payment of Honorarium to CCH (Rs in lakh)		
	Allocation	Payment to CCH	% Payment of Honorarium to Cook-cum-helpers
2017-18	5423.20	5296.10	97.66
2018-19	5423.20	5422.78	99.99
2019-20	5423.20	5420.10	99.94
2020-21	5423.20	196.98	3.63
2021-22	5423.20	3794.07	69.96
2022-23 *	5423.20	2710.05	49.97

*Upto Sep, 2022



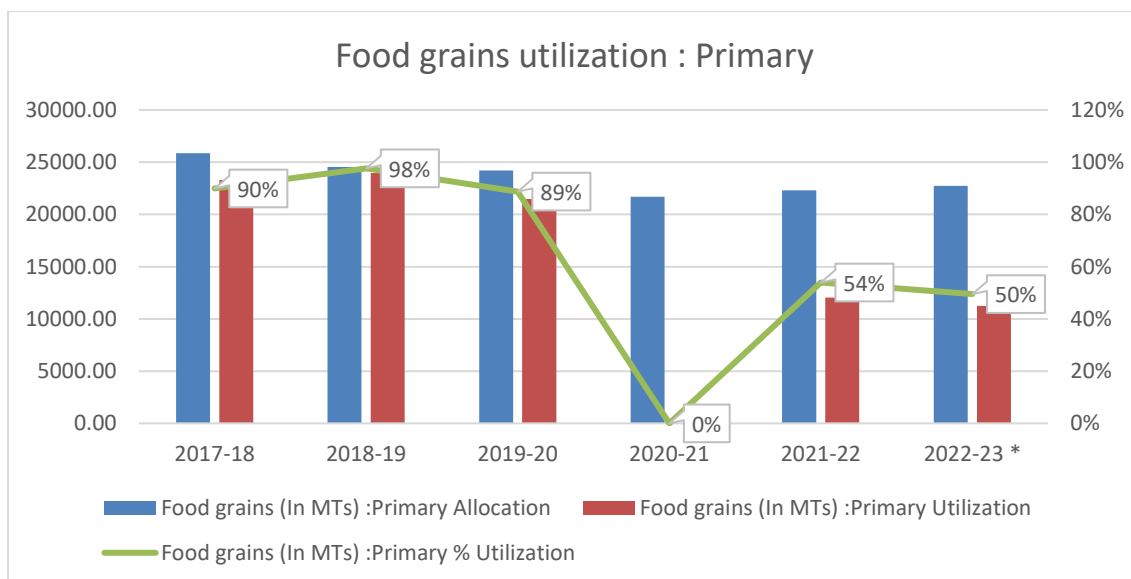
4.5 Food grain utilization

Food grain utilization in Primary level

As per the food norms under the Scheme, 100 gram foodgrain is provided for each meal.

According to the PAB approvals foodgrains are allocated to the State. The year-wise food grain utilization of food grains at primary level are given in the table below:

Food grains (In MTs) :Primary			
Year	Allocation	Utilization	% Utilization
2017-18	25875.04	23276.56	90%
2018-19	24547.50	23971.10	98%
2019-20	24202.25	21481.81	89%
2020-21	21708.00	0.00	0%
2021-22	22311.00	12033.85	54%
2022-23 *	22735.44	11254.24	50%

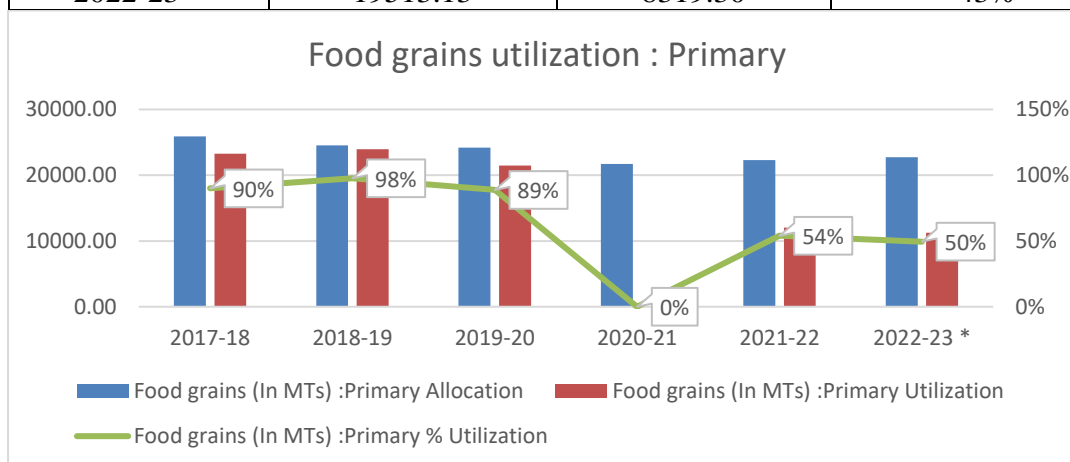


Over the year utilization of the food grains at primary level is less than the PAB approval. During 2017-18 the utilization of food grains was 90%, slight increased by 8% in 2018-19. However 10 % less consumption of food grains in 2019-20. During 202-21 utilization of food grains was zero due to pandemic. In 2021-22, utilization of food grain was 54% only due to less no. of day schools were opened. Current financial year the utilization was 50% till 2nd quarter.

Food grains utilization in Upper Primary level

Year wise utilization of food grain in upper primary level are given below:-

Food grains (In MTs) : Upper Primary			
Year	Allocation	Utilization	%Utilization
2017-18	24749.32	21105.83	85%
2018-19	22778.90	21541.07	95%
2019-20	22148.00	18466.18	83%
2020-21	18758.59	1209.55	6%
2021-22	19273.23	9921.52	51%
2022-23 *	19513.13	8319.30	43%

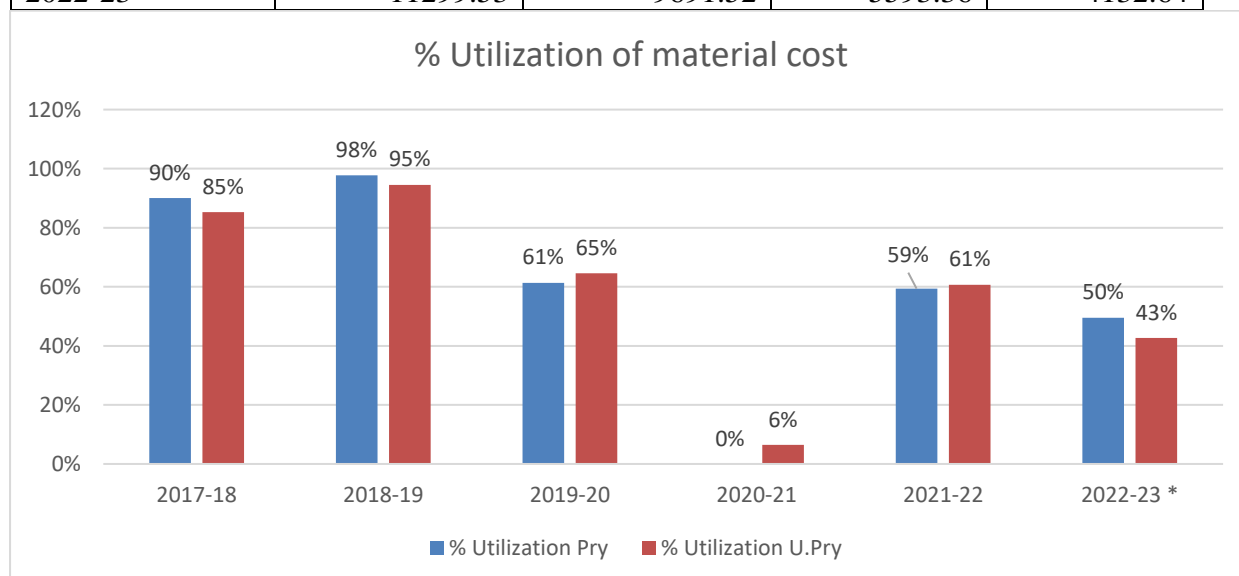


Trends for utilisation of foodgrains at upper primary level are almost same as in primary.

4.6 Utilization of material cost

Material cost (earlier known as cooking cost) is provided for procurement of pulses, vegetables, oil, condiments and fuel. At present it is provided @ Rs 5.45 per child per day for primary and Rs 8.17 per child per day in upper primary w.e.f. 01.10.2022. However, State Government has not yet enhanced the rate and instead meals are provided at the earlier rate of Rs 4.97 per child per day in primary and Rs 7.45 per child per day in upper primary. Year wise utilization of material cost is given in the table below:-

Material Cost (Rs. in Lakh)				
Year	Allocation		Utilization	
	Pry	U.Pry	Pry	U.Pry
2017-18	10686.38	10196.72	9620.91	8690.53
2018-19	10138.12	9384.91	9908.05	8870.11
2019-20	15683.03	12816.76	9623.86	8271.84
2020-21	10788.86	9316.77	0.00	600.74
2021-22	11088.57	9572.37	6583.46	5810.92
2022-23 *	11299.53	9691.52	5593.36	4132.64



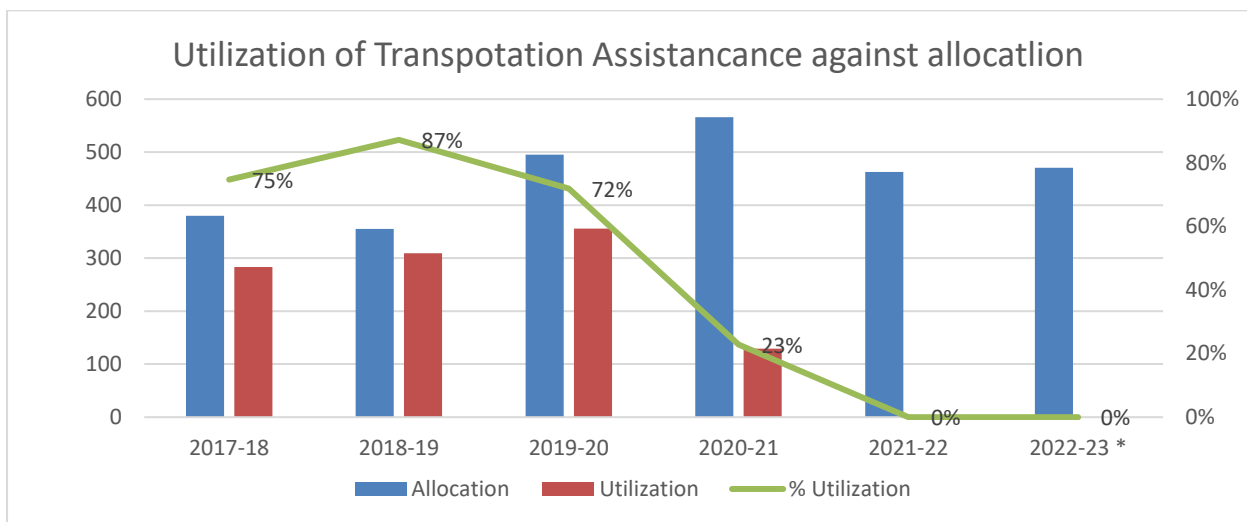
It is depicted from the above graphs that utilization of material cost also shows decreasing trends. In 2017-18 the material cost utilization was 90% at primary level and 85% at upper primary level against the allocation. In 2018-19 it is slightly increased by 8% in primary and 10% in upper primary from the previous year. However, during 2019-20 the expenditure of material costs decreased by 37% in primary and 30% in upper primary from the previous year. Utilization of material cost was zero in 2020-21 because schools remains closed due to the

pandemic. In 2021-22, the material cost utilization was only 61% against the allocation. Upto the 2nd quarter of the current finance only 50% in primary and 43% in upper primary level.

4.7 Utilization of Transportation Allowance

Year wise utilization of Transportation allowance is given below:

Transportation Assistance (Rs in lakh)			
Year	Allocation	Utilization	% Utilization
2017-18	379.68	283.46	75%
2018-19	354.95	309.5	87%
2019-20	495.36	355.81	72%
2020-21	566.18	129.23	23%
2021-22	462.83	0	0%
2022-23 *	470.23	0	0%



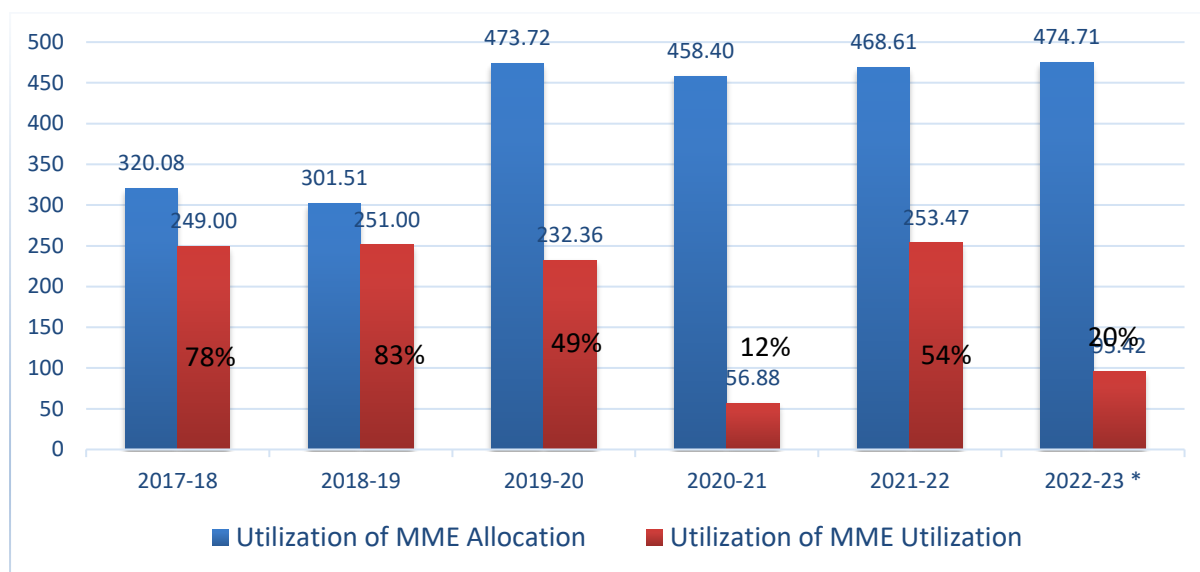
The above graph depicted that over the year the utilization of transportation is decreasing order from 2018-19 to current financial year.

4.8 Utilization of Management Monitoring and Evaluation (MME)

Central assistance is provided for Management, Monitoring and Evaluation purposes. Utilisation of these funds is a good indicator towards the supervision and monitoring being carried out in the State. As may be seen in the table below, the utilisation of MME funds is very poor. During 2021-22 only 54% of the allocated funds were utilised while during the first six months of 2022-23 only 20% of the earmarked funds have been utilised.

Over the year the utilization of MME funds by the State Govt. is also in decreasing trends. The year wise utilization of MME funds is given below:-

Utilization of MME (Rs in Lakh)			
Year	Allocation	Utilization	% Utilization
2017-18	320.08	249.00	78%
2018-19	301.51	251.00	83%
2019-20	473.72	232.36	49%
2020-21	458.40	56.88	12%
2021-22	468.61	253.47	54%
2022-23*	474.71	95.42	20%

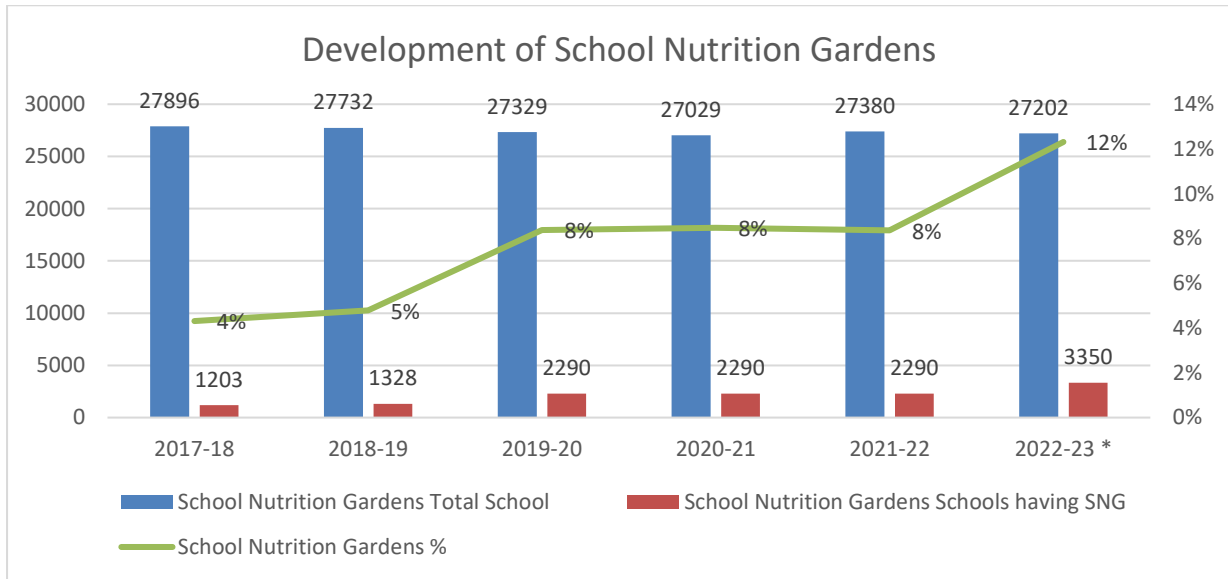


The above graphs depicted that the utilization of MME funds is very low.

4.9 Development of School nutrition gardens

School Nutrition Gardens are a very good source of freshly grown vegetables which can be used in cooking of meals at schools. The PAB-PN POSHAN has advised the State to develop SNGs in all schools, however the performance is very slow on this account. The year-wise progress on development of school nutrition gardens is given below:

School Nutrition Gardens			
Year	Total School	Schools having SNG	%
2017-18	27896	1203	4%
2018-19	27732	1328	5%
2019-20	27329	2290	8%
2020-21	27029	2290	8%
2021-22	27380	2290	8%



CHAPTER: 5 - Observations from the Field as per the ToR

5.1 Review of the fund flow mechanism

The recurring central assistance as approved by the Programme Approval Board under the scheme is released to State was released in two instalments in the ratio of 60% and 40% of. Till 2021-22, the first instalment was bi-furcated into two parts i.e. ad-hoc release and balance of first instalment. The ad-hoc release was made @ 25% of the PAB approval to ensure uninterrupted implementation of the scheme without asking for any information on the unspent balances.

Since the implementation of new procedure of release of funds under PFMS, new set of guidelines have been issued by Department of Expenditure, Ministry of Finance, Govt of India. One important aspect is opening of State Nodal Agency Account at the State level and zero balance accounts down the line for all implementing agencies. In compliance to this State has opened SNA and IA accounts in Canara Bank.

As per the information provided, in Telangana, State Government releases the funds to the SNA Account of Director of School Education. In-turn, the Director releases the funds to the DEOs SNA Account. The District Educational Officer releases the funds to MEO SNA Account through PFMS. As per the bills submitted by the Head Masters (HMs) the MEO will enter the bills in PFMS and submit the signed PPA copy at the concerned bank branch. Bank authorities will transfer the amount to the bank accounts of concerned Implementing Agencies.

As per the new guidelines the State Treasury has to release the central share to SNA within 21 days and the corresponding State share to be released within 40 days of release of central share from GoI. During 2022-23, the Central Government released Rs 81.35 crore as central assistance on 18.08.2022, however, till date State treasury has released only Rs 61.35 crore to the SNA account.

Women Self Help Groups have been engaged for preparing and serving hot cooked meals under the scheme. At the end of the month the school Head Teacher submits bill to the office of the Mandal Education Officer. The MEO then verifies the bills and submit request for release of funds to the concerned Implementing agencies. During the field visit, JRM team was informed

that there was generally a delay of 2-3 months in releasing of funds to the implementing agencies. However, at the time of visit all implementing agencies were paid till the month of October. It is important to mention here that all the stakeholders including district officers, Mandal Officers, teachers and SHGs are appreciative of implementation of PFMS, as it has significantly reduced the time lag in payment being made to the implementing agencies. It was also observed that many of the SHGs were not even aware, that the payment is already made. State may devised some mechanism through which the implementing agencies may be informed by the concerned teachers about the status of payment.

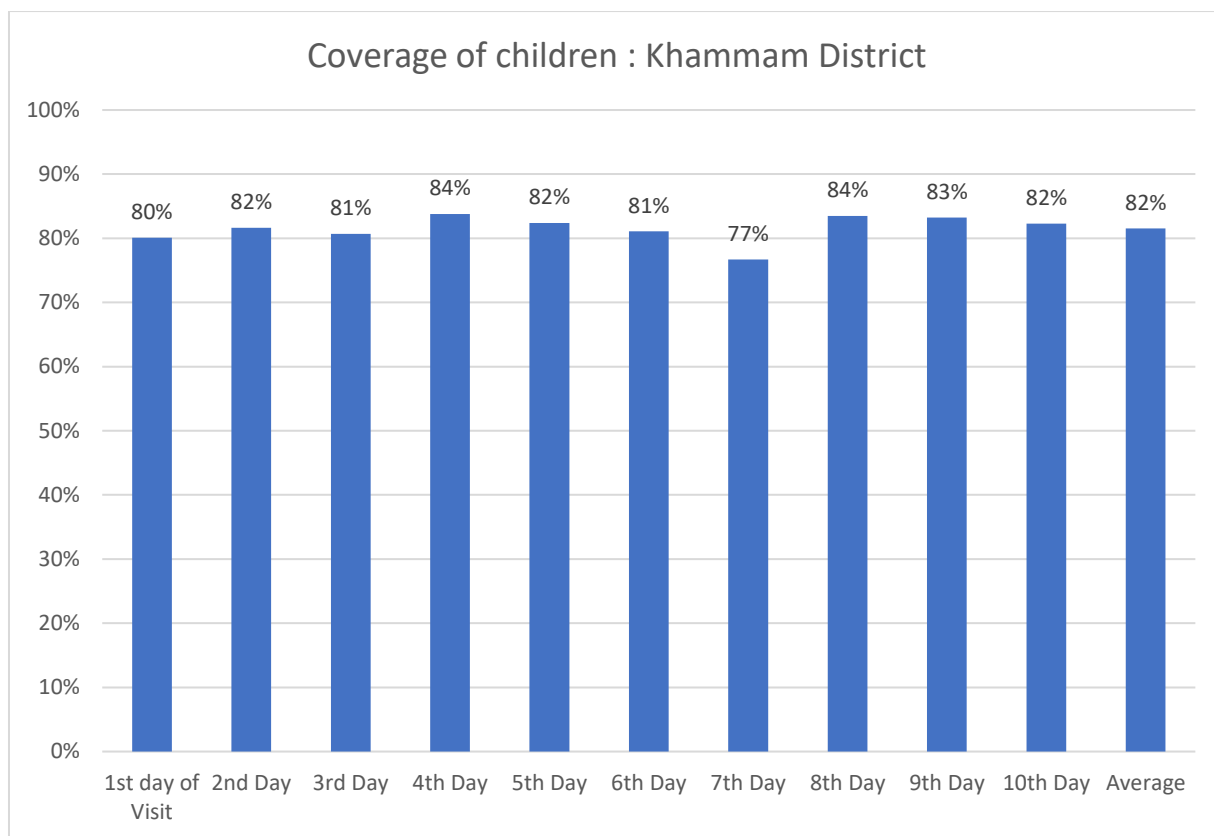
5.2. Review of the coverage of the scheme

During the visit JRM team collected information on enrolment and the number of children availing meals for last 10 days. Total 5695 children were enrolled in the visited schools, out of which 4199 Children (74%) availed hot cooked meals on average basis during the last 10 days. The coverage is about 82% in Khammam and 67% in Yadadri Bhuvangiri.

District Khammam

In the 29 visited schools in Khammam, 2704 children were enrolled. Out of these 2207 children have availed meals on an average basis during the last ten days of the day of visit.

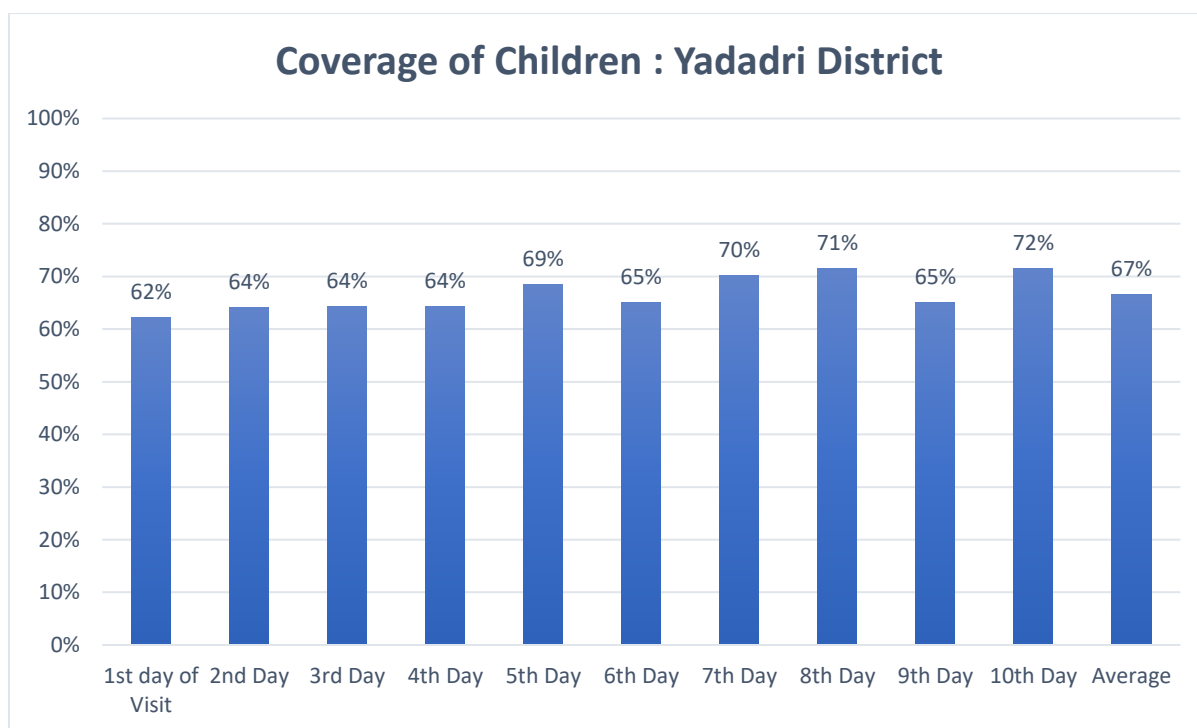
Graph 8: Day wise average students availing MEALS in the visited schools in district – Khammam



District – Yadadri Bhuvangiri

In the 20 visited schools in the district 2991 children were enrolled. Out of these 1994 children (67%) have availed MEALS on an average basis during the last ten days from the day of visit.

Graph 8: Day wise average students availing MEALS in the visited schools in district – Yadadri Bhuvangiri



It may be seen from the graph that the least coverage of children (62%) is recorded on the day of visit.

State may analyse the reasons for less coverage of children in Yadadri district, as the coverage (67%) is much less than the average coverage generally reported by the State (82%).

5.3 Review of the Management structure

Education Department is nodal department for implementation of PM POSHAN Scheme in the State. Education Department also coordinates with different departments like Food Department, Civil Supply Corporation, MNREGS, Health and other Departments for smooth implementation of the Scheme in the State. State Steering-cum-monitoring Committee has been constituted under the chairmanship of Chief Secretary, Govt. of Telangana to oversee the implementation and performance of the Scheme.

In all the visited schools self help groups have been engaged as the implementing agency for PM POSHAN Scheme. These SHGs procure pulses, condiments etc, prepare hot cooked meals and serve to children in the visited schools.

Supervision of the scheme in the visited schools is being done by Head Teacher and other school Staff, Members of School Management Committees and Members of Parent-Teacher Committee. Tasting registers have also been maintained at all schools. Every day one teacher

and one student taste the food and put their remarks in the register about the quality of the food being served. Students also communicated their observation on the quality of food to the cook-cum-helpers.

The Joint Review Mission observed that schools were being inspected regularly on monthly basis by the cluster coordinators. At times Mandal Education Officer also visit the schools. However, it was also observed that the inspection most of the times may be more focused as most of the times inspecting officials are not looking into vital parameters in implementation of the Scheme.

Regarding record keeping it was also noticed that schools were using different formats for recording information on implementation of PM POSHAN in different schools. At the same time a lot of record keeping is being done at school level while maintaining too many registers. State level officers should also visit districts and schools to oversee the implementation of scheme. State Government may also constitute State level Review Missions to oversee the implementation of the scheme. State may also form two groups of 5-6 officers in each group including officers from State, Districts and Mandal levels. These groups may be entrusted to visit a different district on alternative month to monitor the implementation of scheme. In this manner, atleast one district may be covered every month.

A uniform register for capturing information on implementation of PM POSHAN Scheme may also be developed and conveyed to all schools in the State for uniformity of data maintenance at the school level.

5.4 Review the delivery mechanism of food grains from State to Schools

Govt of Telangana is providing Super Fine Quality rice under PM POSHAN. The State Civil Supplies Corporation is the nodal agency for transporting and supply of foodgrains to the schools. It lifts the rice from FCI godown and deliver super fine quality rice at school door steps. Every month district wise rice requirement will be given to the Civil Supplies Department. State Civil Supplies Department has introduced E-PoS (Electronic Point of Sale) to approve the indents raised at Mandal Level. In E-PoS the Mandal Educational Officers raise the indents duly entering the closing balances available at school level. In turn the indents will be approved by the District Educational Officers by using digital token assigned to them. After confirmation by the DEOs indents will be approved at HoD level. The District Civil Supplies

authorities generates R.Os and issue rice to the schools by taking the thumb impression of the concerned MEO / Head Master at MLS points.

The JRM team was informed that in some schools which are located at some distance away from the motorable road, the hamali (labourer) are charging about Rs 20-30 per bag for delivering up to the school door steps.

During the field visit it was observed that registers are maintained at the school level showing details about the quantity of rice received and consumed every day. The storage of food grains is made at schools only in most cases. However, storage bins for food grains were not available in any schools. It is recommended that storage bins may be provided to schools for safe and hygienic storage of food grains.

The team observed that allocation of foodgrains to schools is not being done in a systematic manner. There was huge stock piling in some schools, on the other hand many schools having negative unspent balances every month. This needs to be looked into and the system for allocation of foodgrains needs strengthening.

5.5 Review the smooth implementation of the Scheme with particular reference to Interruptions.

JRM team did not observe any interruption in provision of hot cooked meals under PM POSHAN Scheme.

5.6 Construction of Kitchen-cum-stores

Availability of kitchen-cum-store is essential for ensuring that meals are cooked in a safe and hygienic environment. Govt. of India released central assistance of Rs. 234.69 crore during 2006-2012 for construction of 30,408 Kitchen-cum-Stores. So far State has been able to construct 17,483 Kitchen-cum-stores only.

It was observed that proper kitchen-cum-store was available only in few schools. In most of the schools meals are cooked in open spaces only. The JRM team is informed that construction of kitchen would be taken up in the programme 'Mana Ooru Mana Badi' which is being initiated for development of infrastructure facilities in schools.

5.7 Procurement/Replacement of Kitchen Devices

Under PM POSHAN Scheme, non-recurring central assistance is admissible to all the schools for procuring cooking utensils, serving devices and storage bins. The implementing agencies in all schools complaining about non-availability of adequate kitchen devices, and in absence of these, they have to bring their own utensils from home for cooking and serving of meals. Here it is important to mention that Central Government released Rs 14.25 crore towards procurement of kitchen devices in 17414 school on 4th March, 2020. However, State has not yet started the process for procurement of these kitchen devices. In all visited schools students bring their own plates from home for eating the meals.

The JRM recommends that the kitchen devices may be procured immediately as the implementing agencies are facing problems at the school level.

5.8 Review the convening the meetings of District Level Committee under Chairpersonship of senior most Member of Parliament (LS)

The Ministry of Education has constituted a District level committee under the chairpersonship of the senior most Member of Parliament (Lok Sabha) in the district. The committee is supposed to meet at least once in a quarter. As per the information provided by the district authorities one meeting of this committee has taken place in both the visited districts.

5.9. Review the Management Information System (MIS)

The web based portal has been developed by the Ministry of Education, Govt. of India in 2012 for the online monitoring of the PM POSHAN Scheme. All the State/UTs have been feeding basic school's indicators data in Annual module once a year at the beginning of the Financial Year i.e. in April month of every year. Similarly, in Monthly Data entry modules, school wise monthly expenditure, meal served, payment of honorarium etc. indicators data have to be entered on monthly basis and complete within 10th day of the every month. Various types of key indicators reports were available on the website. The State Govt. of Telangana has completed data Annual Data entry of 99.51% schools' data in Annual Data Entry module. The district wise Annual data entry status as under:-

Annual Data Dentry for FY : 2022-23

S. No.	District	Total Schools	Completed (Saved)	% of School Annual data entry completed
1	ADILABAD	1136	1136	100%
2	BHADRADRI	1337	1337	100%
3	HANUMAKONDA	499	499	100%
4	HYDERABAD	848	846	99.8%
5	JAGTIAL	791	790	99.9%
6	JANGAON	478	478	100%
7	JAYASHANKAR	426	419	98%
8	JOGULAMBA	459	457	100%
9	KAMAREDDY	1003	1003	100%
10	KARIMNAGAR	641	641	100%
11	KHAMMAM	1254	1227	98%
12	KOMARAM BHEEM	993	993	100%
13	MAHABUBABAD	926	902	97%
14	MAHBUBNAGAR	833	833	100%
15	MANCHERIAL	764	764	100%
16	MEDAK	891	891	100%
17	MEDCHAL	495	492	99%
18	MULUGU	477	470	99%
19	NAGARKURNOOL	843	841	100%
20	NALGONDA	1482	1478	100%
21	NARAYANPET	492	492	100%
22	NIRMAL	762	751	99%
23	NIZAMABAD	1181	1170	99%
24	PEDDAPALLI	527	526	100%
25	RAJANNA	495	486	98%
26	RANGAREDDY	1264	1263	100%
27	SANGAREDDY	1267	1267	100%
28	SIDDIPET	948	947	100%
29	SURYAPET	974	954	98%
30	VIKARABAD	1052	1050	100%
31	WANAPARTHY	512	512	100%
32	WARANGAL	613	613	100%
33	YADADRI	681	681	100%
	Total	27344	27209	99.51%

State has informed the JRM Team that these 135 schools, for which annual data entry is pending have zero enrolments and will be closed within the month.

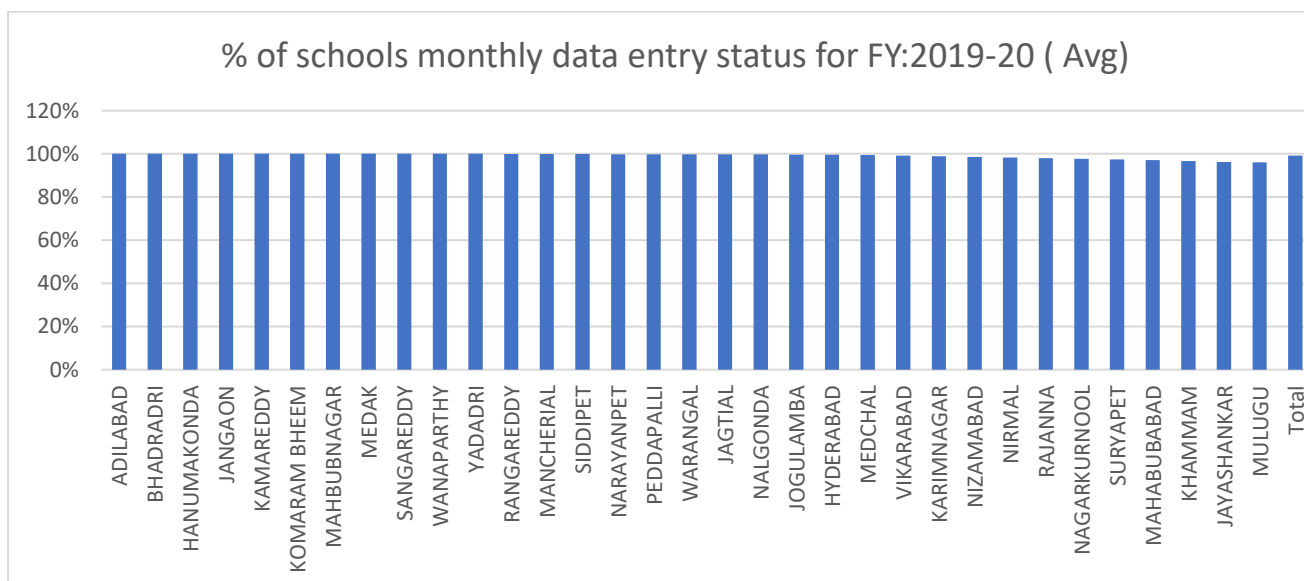
5.9.1 Monthly Data Entry Status:

State Govt. of Telangana completed monthly data entry on an average 99% of schools' data.

The district wise monthly data entry status is given below:-

Monthly data entry status for FY:2022-23										
S. No.	District	Freeze Schools	Apr	May	Jun	Jul	Aug	Sep	Oct	Avg
1	ADILABAD	1136	1136	1136	1136	1136	1136	1136	1136	1136
2	BHADRADRI	1337	1337	1337	1337	1337	1337	1337	1337	1337
3	HANUMAKONDA	499	499	499	499	499	499	499	499	499
4	HYDERABAD	848	846	844	844	844	844	844	844	844
5	JAGTIAL	791	790	789	789	789	789	789	789	789
6	JANGAON	478	478	478	478	478	478	478	478	478
7	JAYASHANKAR	426	419	413	407	407	407	407	407	410
8	JOGULAMBA	459	457	457	457	457	457	457	457	457
9	KAMAREDDY	1003	1003	1003	1003	1003	1003	1003	1003	1003
10	KARIMNAGAR	641	641	632	632	632	632	632	632	633
11	KHAMMAM	1254	1227	1210	1210	1210	1210	1210	1210	1212
12	KOMARAM BHEEM	993	993	993	993	993	993	993	993	993
13	MAHABUBABAD	926	902	899	899	899	899	899	899	899
14	MAHBUBNAGAR	833	833	833	833	833	833	833	833	833
15	MANCHERIAL	764	764	764	763	763	763	763	763	763
16	MEDAK	891	891	891	891	891	891	891	891	891
17	MEDCHAL	495	492	492	492	492	492	492	492	492
18	MULUGU	477	470	465	465	465	465	463	416	458
19	NAGARKURNOOL	843	841	841	841	826	823	798	797	824
20	NALGONDA	1482	1478	1478	1478	1478	1478	1478	1478	1478
21	NARAYANPET	492	492	492	492	492	491	491	488	491
22	NIRMAL	762	751	750	748	748	748	748	748	749
23	NIZAMABAD	1181	1170	1164	1164	1164	1164	1164	1164	1165
24	PEDDAPALLI	527	526	526	526	526	526	526	526	526

Monthly data entry status for FY:2022-23										
S. No.	District	Freeze Schools	Apr	May	Jun	Jul	Aug	Sep	Oct	Avg
25	RAJANNA	495	486	485	485	485	485	485	485	485
26	RANGAREDDY	1264	1263	1263	1263	1263	1263	1263	1263	1263
27	SANGAREDDY	1267	1267	1267	1267	1267	1267	1267	1267	1267
28	SIDDIPET	948	947	947	947	947	947	947	947	947
29	SURYAPET	974	954	954	954	954	954	954	911	948
30	VIKARABAD	1052	1050	1044	1044	1044	1043	1043	1038	1044
31	WANAPARTHY	512	512	512	512	512	512	512	512	512
32	WARANGAL	613	613	612	612	612	612	612	609	612
33	YADADRI	681	681	681	681	681	681	681	681	681
	Total	27344	27209	27151	27142	27127	27122	27095	26993	27120

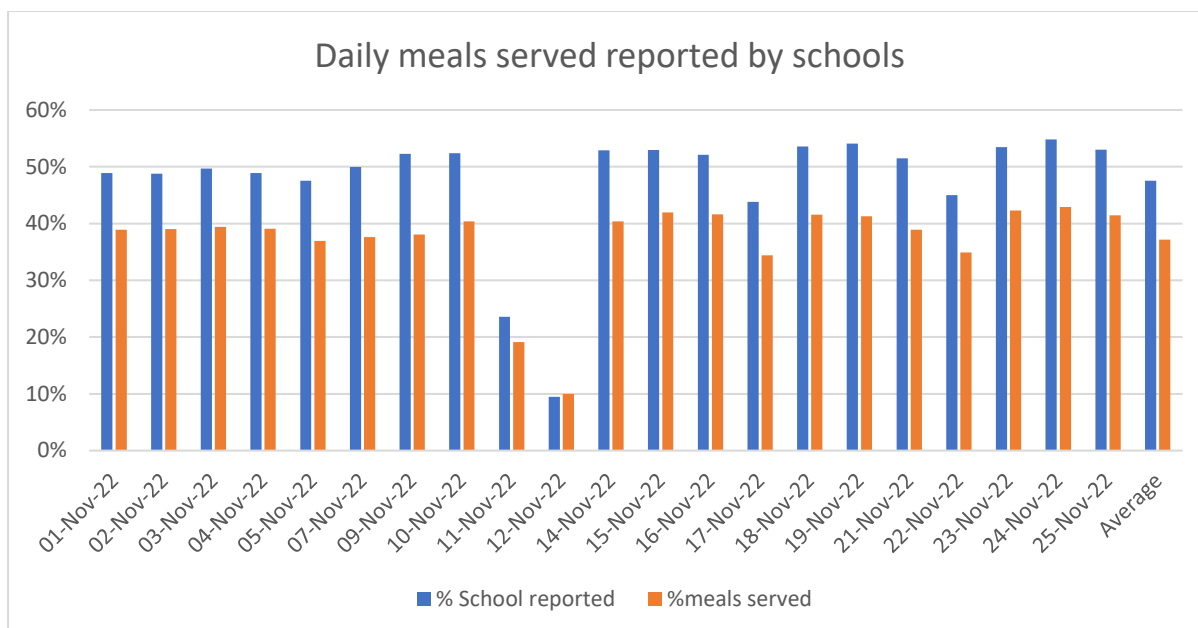


The monthly data entry process is satisfactory. As state Govt. informed us that some of the zero enrolment schools are not yet closed in the system. Some of the zero-enrolment schools will be closed soon. It is observed that the reports of the MIS available on the website are not used for monitoring purposes and also no analysis has been done. The State also need to ensure the quality of data being entered into the system and is in sync with QPR data, food grains consumption, material cost and coverage of children etc. for maintaining of good quality data.

5.9.2. Review of implementation of Automated Monitoring System

State Govt. of Telangana has developed TS MDM App with the help of TS Online and the same is fully operationalized from 11-07-2022. In this app, some of the main indicators related with PM POSHAN are captured such as attendance of the Children, social category wise number of children availing meals, attendance of CCH, distribution of eggs etc. The school headmaster/head teacher is required to submit this information through app on the same day itself. If the data not submitted by the teacher on the same day, then the alert SMS send to Mandel Education Office (MEO) for further necessary action. The same data has been pushed through the web services to the NIC Server from Telangana. The district wise information on daily reported school for the month of November, 2022 report is given below:-

Daily reported through SMS				
Date	Reported Schools	Meal served	% School reported	% meals served
01-Nov-22	14028	804452	49%	39%
02-Nov-22	13993	806787	49%	39%
03-Nov-22	14246	815042	50%	39%
04-Nov-22	14022	808200	49%	39%
05-Nov-22	13646	764113	48%	37%
07-Nov-22	14336	777728	50%	38%
09-Nov-22	14994	787276	52%	38%
10-Nov-22	15035	835468	52%	40%
11-Nov-22	6756	395232	24%	19%
12-Nov-22	2719	206771	9%	10%
14-Nov-22	15181	834899	53%	40%
15-Nov-22	15188	868172	53%	42%
16-Nov-22	14955	860414	52%	42%
17-Nov-22	12571	711425	44%	34%
18-Nov-22	15372	859519	54%	42%
19-Nov-22	15524	853646	54%	41%
21-Nov-22	14776	805435	52%	39%
22-Nov-22	12918	721805	45%	35%
23-Nov-22	15346	874503	53%	42%
24-Nov-22	15729	888133	55%	43%
25-Nov-22	15203	857498	53%	41%
Average	13645	768406	48%	37%



It is observed that 48% of schools have been reported through mobile app on daily basis. The state Govt. of Telangana must encourage all the schools to send daily meal-served reports through their mobile app. And monthly review meetings on the reported schools should be taken for the smooth functioning of the PM POSHAN Scheme.

5.10 Convergence with Rastriya Bal Swasthya Karyakram for health check-up, supplementation of micronutrients under WIFS & de-worming medicine under National de-worming day and health check-ups and supply of spectacles to children suffering from refractive errors.

The Scheme Guidelines envisage health check-up of the students through Rashtriya Bal Swasthya Karyakaram (RBSK) under National Health Mission of the Ministry of Health & Family Welfare. This is going on very well in the State. However, School Health Cards (SHC) of the students were not kept in the visited schools as these are available with the RBSK teams.

JRM team observed that the medical teams have been conducting the health check-up of the children in all the schools. In both the districts health checkups are being carried out even twice a month in some of the visited schools.

The JRM team was informed that medical teams have been formed at Mandal levels, and they have a target to screen 150 children per day.

5.11. Operationalization of Mid-Day Meal Rules, 2015

The State Government has issued instructions to all the field functionaries for implementation of the MDM Rules'2015 scrupulously duly communicating a copy of the Gazette Publication issued by the Government of India. However, in all visited schools, most of the teachers and Mandal and district officials were unaware of the provisions of MDM rules. It is recommended that the stakeholders may be sensitised about the provisions of MDM rules.

5.12 Enrolment of children and Cook-cum-Helpers under Aadhaar

The State informed that more than 93% of the enrolled children and 100% cook-cum-helpers are having Aadhaar card. The JRM team also noticed in the visited schools that more than 95% of the enrolled children are having Aadhaar card. It is advised to ensure that all enrolled children are registered for Aadhaar.

The State has supplied Aadhaar kits to the MIS coordinators at all Mandal Headquarters to complete 100% Aadhaar enrolment of all children.

5.13 Payment of Honorarium to Cook-cum-Helpers

The JRM observed that in most of visited schools honorarium to cook-cum-helpers was paid up to the month of October in both the districts. The CCHs informed that generally there was a delay of 2-3 months in payment of honorarium, however, situation has improved now. The officials informed that payment system has streamlined after the implementation of PFMS system.

5.14 System of Storage food grains and other ingredients

Buffer stock of food grains was available in only in about 40% of the visited schools. However, storage bins are not provided to any of the visited schools and sacks of food grains are placed on the floor. It is recommended to provide storage bins to schools for safe and hygienic storage of food grains and other ingredients.

5.15 Role of Teachers in PM POSHAN Scheme.

As per the Scheme guidelines, the role of the teacher is to organize, supervise and ensure that the meals are served in an orderly manner. The JRM interacted with the teachers in the visited schools. Almost all the teachers informed that they are able to keep the PM POSHAN record easily because Self Help Groups and Cook-cum-Helpers are responsible for cooking and serving the meals. This has relieved them for attending to their teaching and learning activities. The JRM team observed that at present teachers are maintaining daily information on caste

wise and gender wise data on coverage of children under PM POSHAN. Different formats were also used in different schools, for record keeping. *It is suggested that a simple format may be devised for keeping records of important components of PM POSHAN Scheme and these may be circulated to schools, to ease out the burden on teachers and also for uniformity of record keeping.*

5.16 Testing of meals

State has not undertaken testing of meals during 2022-23.

5.17 Awareness of the Scheme

Entitlement of children under the scheme, Menu and logo were not displayed at a prominent place in almost 80% of the visited schools. During interaction the community members express their satisfaction with both the quality and quantity of the meals served. However, they could not comment on the prescribed quantities, as they were not aware of the same. It is recommended to display the entitlement of children, menu and logo at a visible place, preferably on the outer walls of the school, so that these are visible to all.

5.18 School Nutrition Gardens

School Nutrition Gardens were maintained only in 14% of the visited schools. During interaction the team was informed that the area has plenty of monkey and thus it is not possible to maintain the school nutrition gardens. However, the team observed that sufficient land is available in most of the visited schools and efforts may be made for development of SNGs. During interaction, the District Collector, YAdadri informed that they have devised a new name for SNGs and calling these 'Vitamin Garden'.

5.19 Cooking Competitions

Cooking competitions have not been organised.

5.20 Social Audit

Social Audit has not been conducted.

5.21 Mode of Fuel

All the visited schools using firewood as fuel.

CHAPTER-6 : NUTRITIONAL EVALUATION OF PM POSHAN SCHEME

6.1 Methodology

A cross sectional survey was conducted in government run primary and upper primary schools availing PM Poshan Scheme meal in the two districts i.e., Khammam and Yadadri Bhonagiri in Telangana state by adopting multistage random sampling procedure. A multi stage, random sampling design was used for the selection of schools and the children in the selected districts

6.2 Investigations

The following investigations were carried out using pretested and validated questionnaires:

1. Institutional and individual diet surveys
2. Anthropometric measurements
3. Clinical examination for nutritional deficiency signs
4. Current morbidity for previous 15 days
5. Organoleptic/sensory evaluation of students about PM POSHAN Scheme
6. Personal and environmental hygiene
7. Parents perceptions and knowledge about PM POSHAN Scheme
8. Knowledge and practices of functionaries

6.3 Data collection

Two teams, each team consists 6 persons, one medical officer, one nutritionist and one anthropologist/social scientist in each team, along with other two experts in multi-fields were assisted in the team. The data was collected by using pretested and validated questionnaires designed to capture the information on administrative/educational objectives and pertaining to diet and nutritional status of school children, including their personal and environmental hygiene. Hygiene of the kitchen, cook-cum-helpers of the selected schools were also assessed for hygiene and practices with respective to the PM POSHAN Scheme. Knowledge, perceptions, practices and opinions of 4 parents of the select children from all the schools covered for anthropometry was also The quantity of meals prepared on the day of the visit was checked keeping in mind the exact amounts of raw ingredients used and the number of children present on that day to find whether the “food norms” as recommended for PM POSHAN Scheme are adhered to by each of the school. Additionally, weightment diet survey was used to assess cooked food, whether the serving of meals was as per the recommendations for primary & upper primary children. The calories and proteins per serving was calculated.

6.4 Results

6.4.1 Coverage particulars

A total of 1919 school children were covered for anthropometry, clinical examination from 44 schools from both the districts (Khammam: 22; Yadadri Bhuvanagiri 22). Institutional diet and Individual diet survey was carried out in 4 schools covering 595 children from both the districts. In-depth interviews were carried out on 51 PM Poshan Scheme In-Charge teachers/Head Masters, 155 parents, 41 SMC members, 45 Cook-Cum Helpers (CCH) and 11 PM Poshan Scheme functionaries were interviewed for their opinion about PM POSHAN (Table 1).

Table 1: Coverage Particulars

Particulars	Districts		Pooled	
	Khammam	Yadadri Bhongiri		
Number of Schools covered	22	22	44	
No. of students covered for Anthropometry	Boys	521	460	981
	Girls	481	457	938
	Total	1002	917	1919
No. of Schools covered for Institutional Diet survey	2	2	4	
No of children covered for individual Diet Survey	52	48	100	
No of PM POSHAN in-charge teachers interviewed	25	26	51	
No of Parents interviewed	83	72	155	
No of SMC Members interviewed	24	17	41	
PM POSHAN Functionaries (block/district level officers) interviewed	8	3	11	
No of Cook Cum Helpers (CCH) interviewed	24	21	45	

Particulars of schools covered

Total 44 schools (Khammam: 22; Yadadri Bhuvanagiri: 22) were covered for physical facilities available at school. About 86% schools are located in rural areas, while 14% were in tribal area in the Khammam district and corresponding figure for the district of Yadadri-Bhuvanagiri was 91% and 9%, respectively. About 55% were primary, while 45% were upper primary schools (Table 2).

	Khammam	Yadadri	Total
Rural	19	20	39
Tribal	3	2	5
Total	22	22	44

6.4.2. Infrastructure facilities available at school

All the schools covered were being operated in government ‘pucca’ buildings. Kitchen facility was available for 56% of the schools and 89% had hand washing facility. About 86% had water taps and drinking water within the school premises. 82% of the schools have the toilets facility separate for girls. (Table 3).

		Khammam (N=28)		Yadadri (N=27)		Districts Pooled (N=55)	
Type of School Building (Pucca)		28	100.0	27	100.0	55	100.0
Government Building		28	100.0	27	100.0	55	100.0
No of Rooms in the school	<= 5	14	50.0	14	51.9	28	50.9
	>=6	15	53.6	12	44.4	27	49.1
Availability of PM POSHAN Infrastructure							
Kitchen		16	57.1	15	55.6	31	56.4
Kitchen devices		23	82.1	22	81.5	45	81.8
Eating Plates		14	50.0	5	18.5	19	34.5
Hand washing Facility		26	92.9	23	85.2	49	89.1
Availability of Drinking water at school premises		23	95.8	17	81.0	40	88.9
Water Taps		25	89.3	22	81.5	47	85.5
Toilets		24	85.7	21	77.8	45	81.8
Separate toilet for girls		24	85.7	21	77.8	45	81.8
Dining hall		1	3.6	6	22.2	7	12.7
Kitchen Garden		4	14.3	7	25.9	11	20.0
Fire Extinguisher		0	0	4	14.8	4	7.3
First Aid Kit		17	60.7	21	77.8	38	69.1

6.4.3. Food and Nutrient intakes through PM Poshan Scheme:

Food intake of School children through PM Poshan Scheme Meal: Institutional diet surveys in Khammam

On the day of visit the meals were prepared as per the prescribed quantities. However, average cereal intake of some of the children was 88g as against the stipulated nutrition norms of 100g/day, while among upper primary school children, it was 130g as against 150g/day.

The consumption of pulses was about 27g among upper primary school children against the stipulated 30g/day. The intake



of fats and oils (2.2g against stipulated 5g), vegetables (41g against stipulated 50g) for primary school children. Similarly, the intake of fats and oils (4g against stipulated 7.5g), vegetables (49g against stipulated 75g) for upper primary school children also found insufficient in Khammam district. (Table 4).

As per the ration drawn, the mean Consumption of Foodstuffs (g/student/day of visit) by some school children in the district of Khammam through PM Poshan Scheme Meal: Institutional diet survey

Khammam				
Foods	PM POSHAN Norms (g)	Primary	PM POSHAN Norms (g)	Upper primary
Cereals	100	88	150	129.9
Pulses	20	NA	30	27.4
Fats & oils	5	4.5	7.5	6.2
Vegetables	50	62.5	75	10.1
Egg	-	50	-	NA

Nutrient intake of School children through PM Poshan Scheme Meal: Institutional diet surveys in Khammam

రాజు	మెను	పల్లవాలకి ఒక్కరాజు ఉపయోగించాలి	స. No.
1. పోషవారం	అన్నం, గుడ్డు, కూరగాయలు	బియ్యం 150 గ్రా.	1
2. మంగళవారం	అన్నం, ఉక్కు కూర పప్పు	పప్పులు 30 గ్రా.	2
3. బుధవారం	అన్నం, గుడ్డు, కూరగాయలు	కూరగాయలు 75 గ్రా.	3
4. గురువారం	అన్నం, కూరగాయలతో పోషం	నూనె 7.5 గ్రా.	4
5. శుక్రవారం	అన్నం, గుడ్డు, పప్పు	బియ్యం: 7.45 గ్రా.	5
6. శనివారం	వెజిటబుల్ చికెన్		

The intake of energy (448 Kcal/student/day) and protein (14.5g/student/day) through PM Poshan Scheme Meal among primary school children was adequate according to the PM POSHAN nutrition norms (energy: 450 Kcal; protein: 12g). However, among upper school children, the intake of energy (624 Kcal/student/day) and protein (17g/student/day) shows a marginal deficit as per stipulated norms in Khammam district. Table 5.

Average intake of Nutrients (per child /day of visit) through PM POSHAN meal among some children in the district of Khammam: Institutional diet survey

Nutrient intake -PM POSHAN	Energy (Kcal)	Protein (g)	Total fat (g)	Thiamine [mg]	Riboflavin [mg]	Niacin [mg]	Total Foliates [ug]	Vitamin C [mg]	Vit A [ug]	Calcium [mg]	Iron [mg]	Zinc [mg]	Vitamin B12 [mg]
Primary	447.8	14.5	9.9	0.10	0.16	2.01	52.5	15.90	193.8	43.0	4.4	1.8	0.9
PM POSHANR recommended	450	12	-	-	-	-	-	-	-	-	-	-	-
Secondary	623.9	17.0	7.5	0.2	0.1	2.9	51.3	6.0	112.9	60.7	2.7	2.4	0.0
PM POSHANR recommended	700	20	-	-	-	-	-	-	-	-	-	-	-

Food intake of School children through PM Poshan Scheme Meal: Institutional diet surveys in Yadadri

On the day of visit the meals were cooked as per the specified quantities. However, the average cereal intake of some of primary school children was found low as 67g/day as against the stipulated PM POSHAN nutrition norms of 100g/day, and among some of the upper primary school children, it was 92g/day as against 150g/day. The intake of fats and oils (2.2g against stipulated 5g), vegetables (41g against stipulated 50g) for primary school children. Similarly, the intake of fats and oils (4g against stipulated 7.5g), vegetables (49g against stipulated 75g) for upper primary school children also found insufficient in yadadri district. (Table 6).



Mean Consumption of Foodstuffs (g/student/ day of visit) by some school children in the district of Yadadri through PM Poshan Scheme Meal: Institutional diet survey

Yadadri				
Foods	PM POSHAN Norms (g)	Primary	PM POSHAN Norms (g)	Upper primary
Cereals	100	67.1	150	91.8
Pulses	20	NA	30	NA
Fats & oils	5	2.22	7.5	4.0
Vegetables	50	41.2	75	48.7
Egg	-	50	-	NA

Nutrient intake of School children through PM Poshan Scheme Meal: Institutional diet surveys in Yadadri district

The intake of energy (345 Kcal/student/day) was inadequate and protein intake (14.5g/student/day) through meals among primary school children was adequate according to the PM POSHAN nutrition norms (energy: 450 Kcal; protein: 12g). However, among upper school children, the intake of energy (394 Kcal/student/day) and protein (8g/student/day) shows a crucial deficit as per stipulated norms in Yadadri district. **Table 7.**

Average intake of Nutrients (per child /day) through PM Poshan Scheme Meal among the school children in the district of Yadadri: Institutional diet survey

Nutrient intake -PM POSHAN	Energy (Kcal)	Protein (g)	Total fat (g)	Thiamine [mg]	Riboflavin [mg]	Niacin [mg]	Total Folate [ug]	Vitamin C [mg]	Retinol [ug]	Calcium [mg]	Iron [mg]	Zinc [mg]	Vitamin B12 [mg]
Primary	344.6	12.9	7.4	0.1	0.16	1.5	41.8	10.7	166.3	43.6	1.9	1.6	0.9
PM POSHAN Recommended	450	12	-	-	-	-	-	-	-	-	-	-	-
Secondary	394.4	8.2	4.7	0.08	0.07	2.0	20.3	12.8	68.1	19.3	1.3	1.3	0.0
PM POSHAN Recommended	700	20	-	-	-	-	-	-	-	-	-	-	-

6.4.4 Organoleptic characters of PM Poshan Scheme Meal

The quality of meals was also assessed by Sensory Evaluation. The parameters included appearance of meal, colour, odour, texture, taste and overall palatability of recipes prepared as a part of PM POSHAN. The evaluation was carried out on the school site by PM POSHAN team using 5-point Hedonic rating test.

Six batches of students were served meals (2 primary schools and 2 upper primary schools) and in each school about 20 students were covered. Each student was served rice, subji, dal and egg separately on the day of visit and with help of structured schedule organoleptic evaluation was carried out. All the children studying in upper primary classes stated that the meal appearance, colour, odour, texture, taste and overall palatability were either good or very good.

Table 8: Level of satisfaction of school children (class 6th to 8th) about the foods served in PM POSHAN

	Level of Satisfaction	Food stuffs served				
		Rice	Curry(sabji)	Glw Dhal	Rasam	Egg
N		113	53	40	53	30
Appearance	Good/very good	100	100	100	94.3	100
	Satisfactory	0	0	0	5.7	0
Colour	Good/very good	100	100	100	94.3	100
	Satisfactory	0	0	0	5.7	0
Odour/Aroma	Good/very good	100	100	100	94.3	100
	Satisfactory	0	0	0	5.7	0
Texture	Good/very good	100	100	100	94.3	100
	Satisfactory	0	0	0	5.7	0
Taste	Good/very good	100	100	100	94.3	100
	Satisfactory	0	0	0	5.7	0
Overall Palatability	Good/very good	100	100	100	94.3	100
	Satisfactory	0	0	0	5.7	0

6.4.5. Nutritional status of Children Nutritional Anthropometry)

The anthropometric measurements such as weight (Kg) and height (Cm) were taken in 1919 school children from both Khammam and Yadadri Bhuvanagiri districts in the State of Telangana. The mean height and weight were more among boys (134.6 cm and 28.4kg) compared to girls (132.5cm and 28.1kg). The mean anthropometric parameters like height and weight had increased with increase of age in both the genders and all the mean anthropometric parameters were less than the WHO standards (**Table 9**).

All the mean anthropometric parameters of these children were less, when compared to the



WHO standards. The distance charts for heights and weights of boys and girls of the present survey compared to the WHO growth standards and NNMB 2011-12 (states pooled) were presented in **Fig. 1 to 4.**

Table 9: Mean Height & Weight of school age and adolescents by Gender and Age Group

Boys			Age (yrs)	Girls		
N	Height (Cm)	Weight (Kg)		N	Height (Cm)	Weight (Kg)
61	108.4	16.5	5+	69	107.2	15.8
72	113.9	17.8	6+	87	113.4	17.6
84	120.2	20.0	7+	80	118.7	20.2
88	125.9	22.6	8+	100	125.0	23.1
90	130.9	25.4	9+	105	130.6	25.3
116	136.2	28.3	10+	126	137.8	30.7
162	140.3	30.1	11+	154	142.1	33.4
170	145.9	35.1	12+	140	146.3	35.5
93	149.7	38.0	13+	56	150.2	40.5
35	153.1	41.1	14+	17	150.0	41.7
9	161.2	47.7	15+	3	151.8	48.4
981	134.6	28.4	Pooled	938	132.5	28.1

Fig 1: Height - Boys

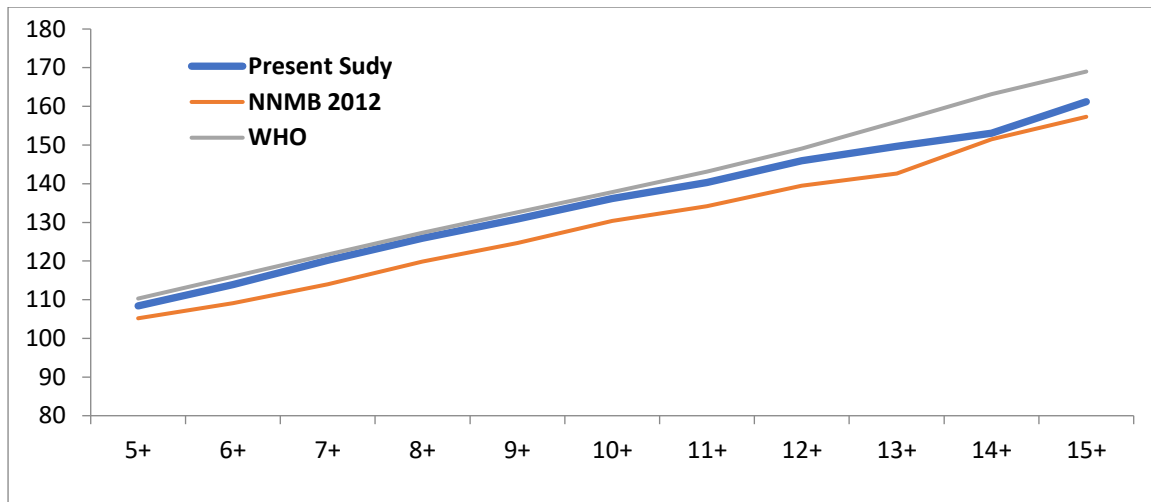


Fig 2: Height - Girls

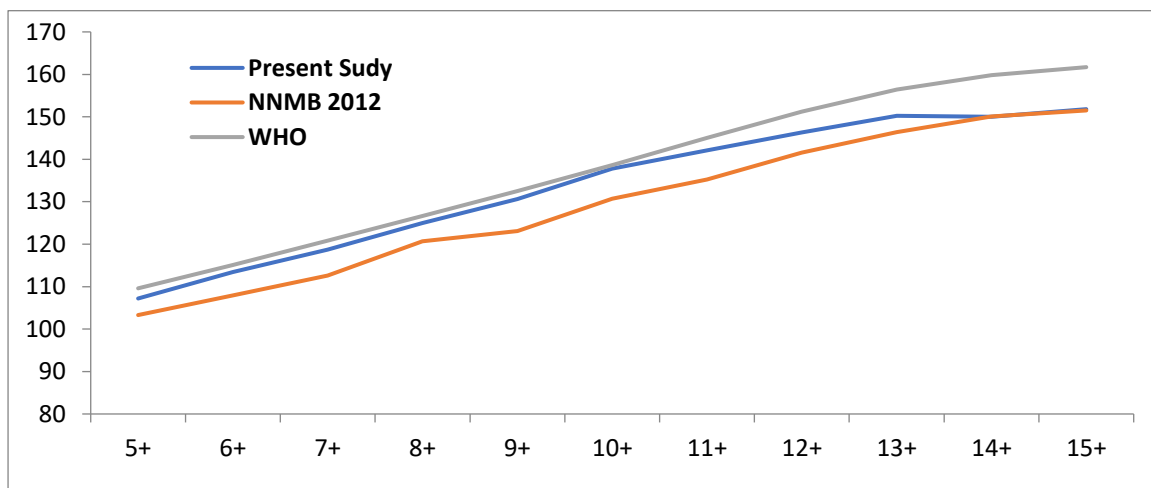


Fig 3: Weight - Boys

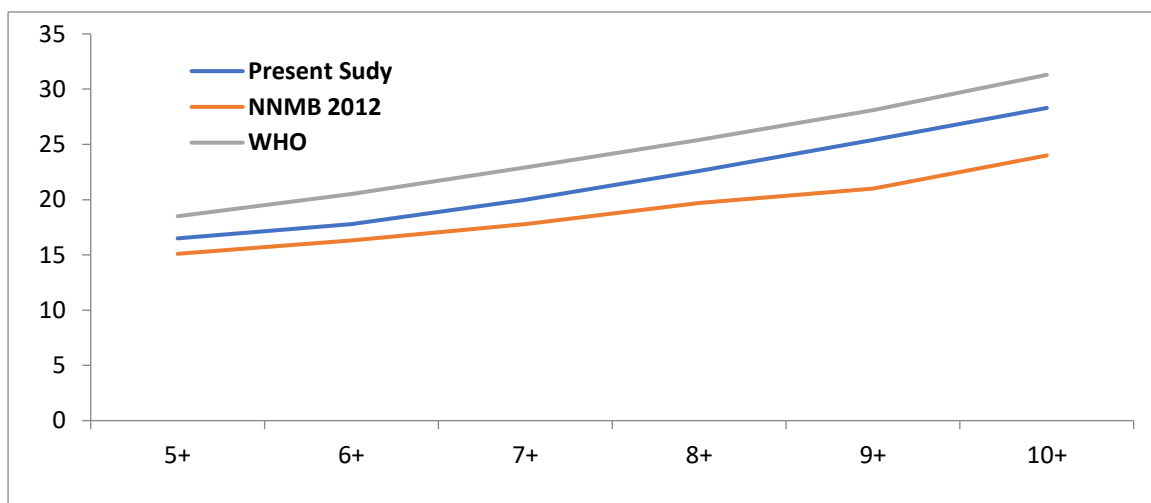
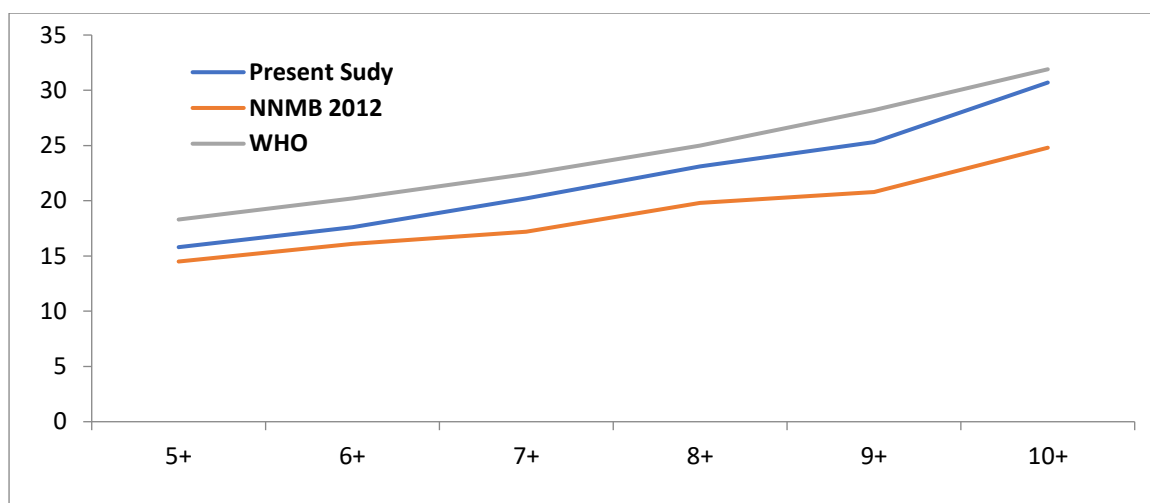


Fig 4: Weight - Girls



PREVALENCE OF THINNESS (BMI Z SCORES)

The prevalence of thinness as measured as the BMI Z Scores by districts and gender of the school age and adolescents was presented in **Table 10,11 & 12** and **Fig 5 & 6**.

Overall, the prevalence of thinness was 25% and it was higher among boys (31%) when compared with the girl counterparts (19%). Among the districts Yadadri-Bhongiri showed higher prevalence of thinness (29%) than the Khammam (22%). The overall prevalence of Overweight and Obesity was 7%, which was marginally higher among girls (7%) than that of the boys (6%) (**Table 10**). The percent of severe thinness was also significantly higher boys (10%) than that of the girls (5%) (**Table 11**). No significant differentials were observed among different age groups. (**Table 12**)



Table 10: Distribution of School going children according to BMI Z Scores by Districts & Gender

District	Gender	N	Overall Thinness	Normal	OW + Obese
Khammam	Male	521	27.3	66.8	5.9
	Female	481	16.0	77.2	6.8
	Pooled	1002	21.9	71.7	6.4
Yadadri Bhongiri	Male	460	34.8	59.4	5.8
	Female	457	22.3	70.0	7.7

	Pooled	917	28.6	64.7	6.7
Districts Pooled	Male	981	30.8	63.3	5.9
	Female	938	19.0	73.7	7.3
	Pooled	1919	25.1	68.3	6.6

Table 11: Distribution of School age and adolescents according to BMI Z Scores by Districts & Gender

Districts	Gender	N	Severe Thinness	Moderate Thinness	Normal	OW	Obese
			<-3SD	-2SD to -3SD	-2SD to +1SD	+1SD to +2SD	> +2SD
Khammam	Male	521	7.9	19.4	66.8	4.6	1.3
	Female	481	3.7	12.3	77.2	6.2	0.6
	Pooled	1002	5.9	16.0	71.7	5.4	1.0
Yadadri Bhongiri	Male	460	11.3	23.5	59.4	4.3	1.5
	Female	457	7.2	15.1	70.0	5.9	1.8
	Pooled	917	9.3	19.3	64.7	5.1	1.6
Districts Pooled	Male	981	9.5	21.3	63.3	4.5	1.4
	Female	938	5.4	13.6	73.7	6.1	1.2
	Pooled	1919	7.5	17.6	68.3	5.3	1.3

Table 12: Distribution of School age and adolescents according to BMI Z Scores by Age Group & Gender

Age Group	Gender	N	Overall Thinness	Normal	OW + Obese
School Age (6+ to 11+)	Male	673	31.6	63.9	4.5
	Female	721	17.8	75.3	6.9
	Pooled	1394	24.4	69.8	5.8
Adolescents (12+ to 17+)	Male	308	28.9	62.0	9.1
	Female	217	23.5	68.2	8.3
	Pooled	525	26.6	64.7	8.7
Pooled	Male	981	30.8	63.3	5.9
	Female	938	19.0	73.7	7.3
	Pooled	1919	25.1	68.3	6.6

Fig 5: Prevalence (%) of thinness by districts and Gender

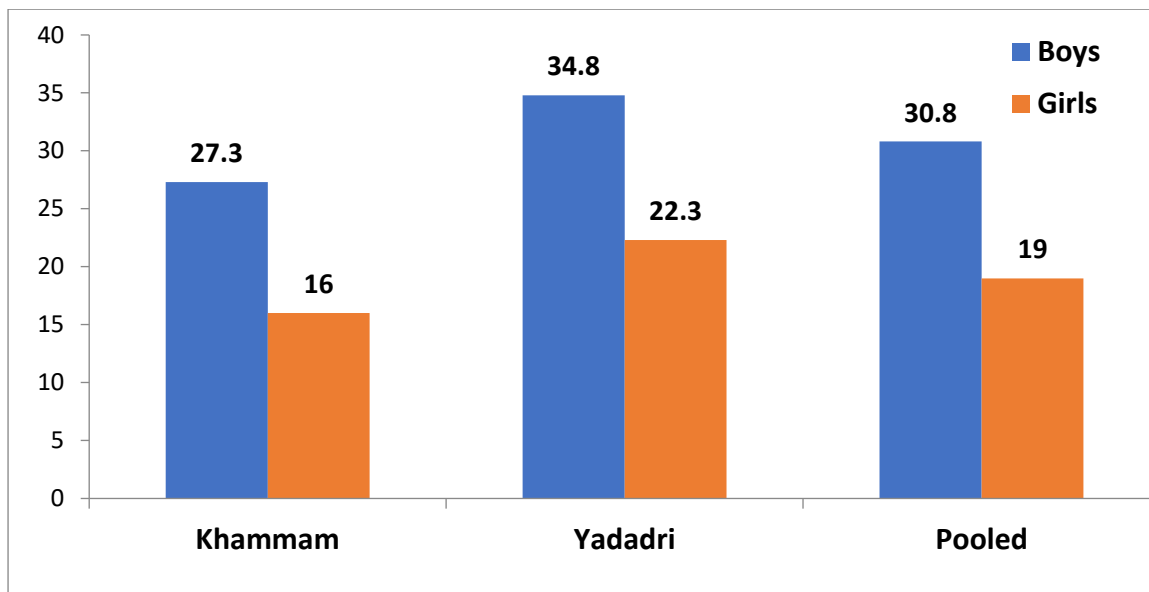
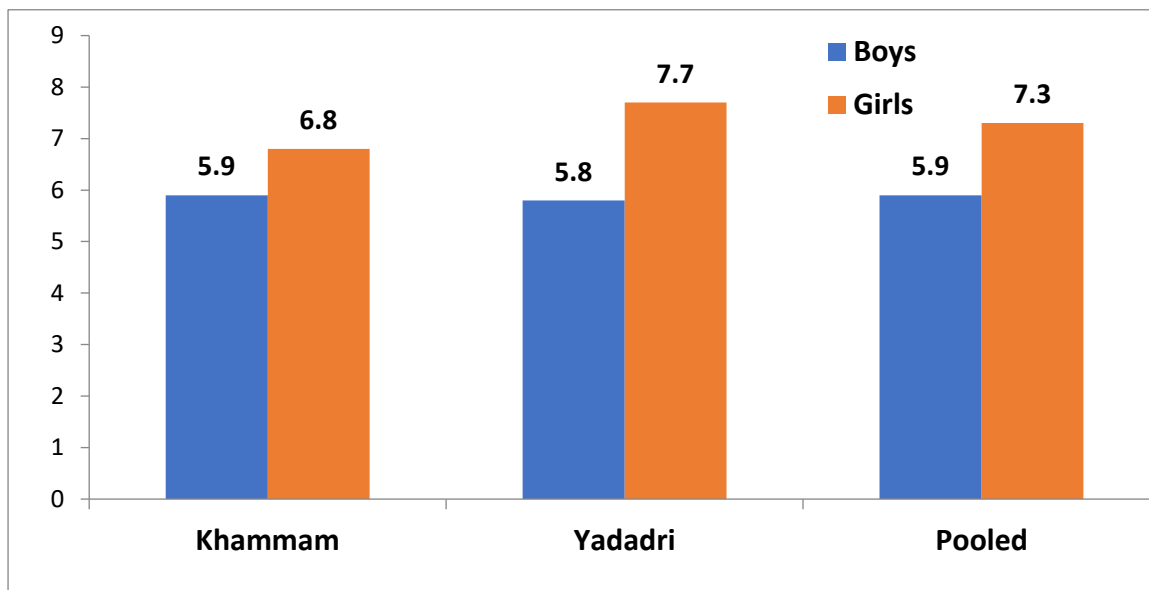


Fig 6: Prevalence (%) of OW & Obesity by districts and Gender



PREVALENCE OF STUNTING (HEIGHT FOR AGE)

The prevalence of stunting as measured as Height for Age by districts and gender of the school age and adolescents was presented in **Table 12 & 14**.

The overall prevalence of Stunting was 13% and it was more or less same among boys and girls.

The prevalence of Stunting was found slightly higher among the children of Yadadri district (14%) than that of the Khammam (12%). (Table 13)

No difference in the prevalence of stunting was observed among the age groups. (Table 14)



Table 13: Distribution of School age and adolescents according to Height for Age by Districts & Gender

Age Group	Gender	N	Severe Stunting	Moderate	Normal
Khammam	Male	521	1.7	10.9	87.3
	Female	481	1.7	8.7	89.6
	Pooled	1002	1.7	9.9	88.4
Yadadri Bhongiri	Male	460	2.0	11.1	87.0
	Female	457	2.6	12.7	84.7
	Pooled	917	2.3	11.9	85.8
Districts Pooled	Male	981	1.8	11.0	87.2
	Female	938	2.1	10.7	87.2
	Pooled	1919	2.0	10.8	87.2

Table 14: Distribution of School age and adolescents according to Height for Age & Gender

Age Group	Gender	N	Severe Stunting	Moderate	Normal
6+ to 11+	Male	673	0.9	8.6	90.5
	Female	721	1.2	9.2	89.6
	Pooled	1394	1.1	8.9	90.0
12+ to 17+	Male	308	3.9	16.2	79.9
	Female	217	5.1	15.7	79.3
	Pooled	525	4.4	16.0	79.6
Pooled	Male	981	1.8	11.0	87.2
	Female	938	2.1	10.7	87.2
	Pooled	1919	2.0	10.8	87.2

PREVALENCE OF NUTRITIONAL DEFICIENCY SIGNS

Number of children with different Nutritional Deficiency signs was presented in Table 15.

Palpable Goitre was observed among 37 children (2%) of the children. The prevalence of Goitre was higher among the girls (3%) than that of Boys (1%). The prevalence of other signs was less than 1%.



Table 15: Nutritional Deficiency signs (number of children)

			Palpable Goitre	Dental Florosis	Angular Stomatitis
Khammam	Boys	521	7	3	1
	Girls	481	14	3	0
	Pooled	1002	21	6	1
Yadadri	Boys	460	2	3	1
	Girls	457	14	7	0
	Pooled	917	16	10	1
Pooled	Boys	981	9 (1%)	6	2
	Girls	938	28 (3%)	10	0
	Pooled	1919	37 (2%)	16	2

PREVALENCE OF CURRENT MORBIDITY

Prevalence current morbidity was collected from all the students for previous 15 days of the survey visit. Very few children were reported with Fever (6 nos) and ARI (7 Nos).

6.4.6. Perceptions of different stake holders of the programme

Knowledge and practices of students about PM POSHAN and hygiene practices

Majority of the students (97%) stated that the served quantity of meals was sufficient to meet their hunger. About 50% of students aware of weekly menu of PM POSHAN, however, all the students surveyed were satisfied with the present menu.

Majority (80%) of the children stated that they were bringing their plates from home. Only 29% of the students stated that they are washing hands before taking the meal. (**Table 16**).

Table 16: Knowledge and practices of students about PM POSHAN and hygiene practices

SL No	About PM POSHAN	Per cent
1	Breakfast before coming to school	85.8
2	Knowledge about PM POSHAN menu	49.6
3	meals served hot	100
4	Like the taste of meals	100
5	Sufficiency of food served	96.5
6	Asking for second serving	100
7	Second serving served	98.2
8	Washing of plates and glasses with water -before food	100
9	Washing of hands with soap –before food	29.2
10	Bring Plates from home	79.6
11	Hand washing with soap after defecation	85.0
12	Brushing teeth with Brush	98.2
13	Daily bathing	100
14	Wearing washed clothes daily	96.5
15	Eating place for meals - by sitting in campus premises	100

Knowledge and perceptions of parents of School children about PM POSHAN

From each of the selected schools, about 4 to 5 parents of the children were interviewed for their knowledge and perceptions about PM POSHAN Scheme. More than one third of parents were either illiterates or had only primary education. Only 7% were educated up to graduation and above. Almost all the parents said that their children were availing meals under PM POSHAN. More than half of the parents (57%) stated that the PM POSHAN is useful for improvement of health and nutritional status of their children and about one third said that the PM POSHAN is providing an additional meal to their children. Almost all the parents stated that their children consuming meals, they were liking the taste of meals and felt that the quantity of the meals served to their children was adequate.

About 42% of the parents opined that they observed improvement in health and nutritional status of their children because of consumption of meals. Nearly 65% of the parents stated that there is a School management Committee (SMC) in the village to monitor the PM POSHAN activities and 14% of them were the members in the SMC.

Majority of the parents (94%) suggested that quality of menu should be enhanced by adding daily egg, daily fruit and milk.

Table 17: Knowledge and perceptions of parents of School children about PM POSHAN

		Khammam (N=83)		Yadadri (N=72)		Dist Pooled (N=155)	
Education	Illiterate	17	20.5	9	12.5	26	16.8

	1-5 th class	11	13.3	9	12.5	20	12.9
	6-7 th class	9	10.8	9	12.5	18	11.6
	8-10 th class	25	30.1	24	33.3	49	31.6
	Intermediate	17	20.5	13	18.1	30	19.4
	Graduation and above	4	4.8	8	11.1	12	7.7
Do you think PM POSHAN programme is beneficial to the children?		82	98.8	68	94.4	150	96.8
Reasons	Improve the school enrolment	9	10.8	17	23.6	26	16.8
	Improve the attendance	43	51.8	35	48.6	78	50.3
	Reduce school dropouts	26	31.3	25	34.7	51	32.9
	Improve the Health & Nutritional Status	52	62.7	36	50.0	88	56.8
	It provides additional food	18	21.7	27	37.5	45	29.0
	Improve the scholastic performance	15	18.1	11	15.3	26	16.8
Your child participate in PM POSHAN		83	100.0	71	98.1	154	99.4
Your child like the taste of the food		77	92.8	69	95.8	146	94.2
Do you think the amount of food served per child is sufficient		75	90.4	68	94.4	143	92.3
Did you notice any changes in your child after participating in the PM POSHAN	Nutritional status improved	39	47.0	27	37.5	66	42.6
	Health status improved	15	18.1	32	44.4	47	30.3
	Regularly going to school	20	24.1	37	51.4	57	36.8
	Performance in school exams improved	21	25.3	25	34.7	46	29.7
Is there any committee in the village to supervise the programme		45	54.2	55	76.4	100	64.5
Are you a member in that committee		12	14.5	10	13.8	22	14.2
What are your suggestions to strengthen the programme	Regular supply of food materials	24	28.1	18	25.0	42	27.1
	Increase the quality	36	43.4	29	40.3	65	42.0
	Increase the quantity	24	29.0	22	30.6	46	29.7
	Change of menu	20	24.1	21	29.2	41	26.5
	Daily Egg/Fruits	79	90.3	67	93.1	146	94.2

Knowledge and perceptions of PM POSHAN Scheme In-charges at School

In-depth interviews were conducted on 51 PM POSHAN Centre In-charges about their knowledge, perceptions and practices about PM POSHAN Scheme. About 45% had education level of graduation with Bed. Majority of these functionaries (94%) had more than 12 years of service. Majority (98%) on the in-charges were aware that PM POSHAN Scheme will “Improve the Health & Nutritional Status” of the children and 59% were aware that PM POSHAN Scheme will “Reduce school dropouts”. As per the report of functionaries, all the schools were serving meals as per the menu.

It was observed that the supervisory component was slightly neglected in the districts. As per the report of PM POSHAN Scheme in-charges, one third of the schools (31%) were supervised either by MEOs or Cluster HMs during the previous month, while only 12% of schools were supervised



by the DEO. The important activities carried out during supervisory visit were checking of meals (45%), followed by verification of records (39%) and hygiene (37%).

Majority of these functionaries suggested increasing the contingency amount and honorarium for cook-cum-helpers and few of them suggested to supply the Eggs through Govt supply.

Majority of the in-charges (71%) reported that they were spending around 1 hr for PM POSHAN Scheme activity in the school and 8% of them the PM POSHAN Scheme work was burdensome to them and affecting the class work.

Table 18: Knowledge and perceptions of PM POSHAN In-charges at School

		Khammam (N=25)		Yadadri (N=26)		Districts Pooled (N=51)	
Education	Graduates with BEd	10	40.0	13	50.0	23	45.1
	PG with BEd	10	40.0	12	46.2	22	43.1
Duration of Service (>= 12 yrs)		22	88.0	26	100.0	48	94.1
Aware of PM POSHANO bjectives	Improve the Health & Nutritional Status	24	96.0	26	100.0	50	98.0
	Improve the school enrolment	13	52.0	8	30.8	21	41.2
	Improve the attendance	14	56.0	16	61.5	30	58.8
	Reduce school dropouts	11	44.0	13	50.0	24	47.1

	Improve the scholastic performance	5	20.0	3	11.5	8	15.7
Supervision of PM POSHANat Schools	Inspector	3	12.0	2	7.7	5	9.8
	Mandal Education Officer	7	28.0	9	34.6	16	31.4
	District Education Officer	4	16.0	2	7.7	6	11.8
	Local Committee	2	8.0	3	11.5	5	9.8
	Cluster HM	7	28.0	8	30.8	15	29.4
Activity during Supervision	Verification of registers/stock	11	44.0	9	34.6	20	39.2
	Identify problems& suggest solutions	5	20.0	5	19.2	10	19.6
	Motivate community	3	12.0	2	7.7	5	9.8
	Check the hygienic practices	7	28.0	12	46.2	19	37.3
	Checking of cooked food	12	48.0	11	42.3	23	45.1
Difficulties in implementing PM POSHAN		21	84.0	23	88.5	44	86.3
If Yes.....	Irregular food supply	5	20.0	2	7.7	7	13.7
	Problem of transport	2	8.0	0	0.0	2	3.9
	Problems with cook	5	20.0	13	50.0	18	35.3
	Contingent amount is less	15	60.0	20	76.9	35	68.6
	Inferior quality of food	1	4.0	4	15.4	5	9.8
	Problems with the society	1	4.0	1	3.8	2	3.9
	Quantity supplied is not sufficient	1	4.0	3	11.5	4	7.8
Suggestions	Regular supply of food materials	5	20.0	6	23.1	11	21.6
	Increase contingency amount	20	80.0	21	80.8	41	80.4
	Increase honorarium for cook	22	88.0	22	84.6	44	86.3
	Change menu	8	32.0	6	23.1	14	27.5
	Eggs from Govt	11	44.0	8	30.8	19	37.3
Time Spent on PM POSHAN(<= 1 Hr)		19	67.9	20	74.1	39	70.9
PM POSHAN affecting class work		4	14.3	4	14.8	8	14.5

Knowledge and perceptions of SMC Chairman/Members

In-depth interviews were also conducted on 25 SMC members. Most of them were men had good education level. Majority of the SMC members were not aware of the entitlements of the PM POSHAN. More than 50% of them have reported that they were attending all the SMC meetings conducted. Majority of them were checking the MEALS preparation and tasting the MEALS also. Around 40% of the members of SMCs were involved in fund raising.

Table 19: Knowledge, perception & practices of SMC Member /Chairman

		N	%
Gender	Male	25	60.98
	Female	14	34.15
Education	Illiterate	4	9.76

	Primary	6	14.63
	Middle	16	39.02
	Intermediate and above	7	17.07
Correct Knowledge on Food Entitlements	Food Grain	4	9.76
	Pulses	4	9.76
	Vegetables	3	7.32
	Oil	2	4.88
Frequency of SMC meetings	Attend every meeting	24	58.54
	Attend 75 % of meeting	3	7.32
	Attend 50 % of meeting	6	14.63
	Not attending	1	2.44
Check MEALS preparation		34	82.93
Taste the MEALS		34	82.93
Raising Funds For PM POSHAN		18	43.90
Fund contribution used to PM POSHAN by Community	Construction of Kitchen	3	7.32
	Helping in Food grains	4	9.76
	Supervise cooking	12	29.27
	Provided Donations	1	2.44
	Others	3	7.32

Knowledge and perceptions of Functionaries of PM POSHAN Scheme

In-depth interviews were also conducted on 11 PM POSHAN Scheme functionaries for assessing their knowledge and perceptions about PM POSHAN Scheme. The knowledge of the functionaries on PM POSHAN Scheme objectives and entitlements was good. Most of the functionaries were reportedly overloaded with extra work as in-charges in other areas of operation.



Table 20: Knowledge and perceptions of Functionaries of PM POSHAN Scheme

		N=11	%
Education	Graduate	2	18.2
	Postgraduate	9	81.8
Aware of PM POSHAN Objectives	Improve the Health & Nutritional Status	11	100.0
	Improve the school enrolment	10	90.9
	Improve the attendance	8	72.7
	Reduce school dropouts	10	90.9
	Improve the scholastic performance	3	27.3
Schools under jurisdiction	<=100	4	36.4
	101-200	5	45.5
	>=200	2	18.2

Frequency of school visit to supervise of PM POSHAN (Daily)		8	72.7
Assess of functioning of PM POSHAN at school	Verification of registers/stock	11	100.0
	Identify problems & suggest solutions	8	72.7
	Motivate community for successful implementation of the programme	4	36.4
	Check the hygienic practices	9	81.8
	Checking of cooked food	11	100.0
Entitlements of food stuffs/ nutrients received by beneficiaries	Cereals	11	100.0
	Pulses	9	81.8
	Oil	9	81.8
	Vegetables	10	90.9
	Calories	11	100.0

Knowledge and perceptions of Cook cum Helper (CCH)

In-depth interviews were conducted on 45 Cook cum Helpers (CCH) about their knowledge and practices of meals cooking. Most of the CCHs were aged ≥ 40 yrs of age (67%) and illiterates (62%). More than half of the CCHs (53%) said that they will follow the instructions of the PM POSHAN in-charge in measurement of the ration and they will measure the ration using the fixed measure. About 44% of the CCHs have received training on best practices.

Table 21: Knowledge and perceptions of Cook cum Helper

		Khammam (N=24)		Yadadri (N=21)		Dist Pooled (N=45)	
Age	25- 40 Yrs	8	33.3	7	33.3	15	33.3
	≥ 40 Yrs	16	66.7	14	66.7	30	66.7
Education	Illiterate	15	62.5	13	61.9	28	62.2
	1-5 standard	5	20.8	3	14.3	8	17.8
Decision on quantity of MEALS	No. of Children present	9	37.5	7	33.3	16	35.6
	Instruction by teacher	13	54.2	11	52.4	24	53.3
Measurement of ration	Standard weighing scale	2	8.3	2	9.5	4	8.9
	Fixed measure	13	54.2	14	66.7	27	60.0
	Approximation	9	37.5	5	23.8	14	31.1
Tasting of meal	CCH	11	45.8	9	42.9	20	44.4
	Teacher	9	37.5	10	47.6	19	42.2
Training received		12	50.0	8	38.1	20	44.4

Cooking facilities in the School/kitchen

More than half (58%) of the schools were observed to cook the meals in the open areas and majority (84%) were using fire wood for cooking. About 89% of the schools were having drinking water facility (tap) within the school premises and around 50% of the children taking the water directly from the source.

All the CCHs reported that they were using Iodised salt for cooking and 75% were storing it in the closed containers. More than half (53%) of the schools were using SF oil for cooking. Only 62% of the schools reportedly have sufficient vessels for cooking. Most of the schools were keeping the grains in the ‘gunny’ bags only as they don’t have the closed containers.

Table 22: Cooking facilities at the School/Kitchen

		Khammam (N=24)		Yadadri (N=21)		Dist Pooled (N=45)	
Cooking place	Openly cooking	15	62.5	11	52.4	26	57.8
	Closed	7	29.2	7	33.3	14	31.1
	Cooking from home	2	8.3	3	14.3	5	11.1
Type of cooking fuel	LPG	3	12.5	4	19.0	7	15.6
	Fire wood	21	87.5	17	81.0	38	84.4
Source of drinking water	Tap	18	75.0	18	85.7	36	80.0
	Bore well	4	16.7	2	9.5	6	13.3
	RO water	2	8.3	1	4.8	3	6.7
Availability of Drinking water at school premises		23	95.8	17	81.0	40	88.9
Utensil for storage of Drinking water	Pot	3	12.5	2	9.5	5	11.1
	Steel Container	5	20.8	3	14.3	8	17.8
	Other container	7	29.2	4	19.0	11	24.4
	Directly from source	9	37.5	12	57.1	21	46.7
Use of Iodised Salt		24	100.0	21	100.0	45	100.0
Storage of iodised salt	Closed container	18	75.0	16	76.2	34	75.6
	Open container	4	16.7	3	14.3	7	15.6
	openly left pouch	2	8.3	2	9.5	4	8.9
Oil for cooking	Palm oil	2	8.3	1	4.8	3	6.7
	Groundnut oil	6	25.0	4	19.0	10	22.2
	Sunflower oil	14	58.3	10	47.6	24	53.3
Sufficient vessels for cooking		15	62.5	13	61.5	28	62.2
Store room facility		12	50.0	9	42.9	21	46.7
Dunnage facility		7	29.2	3	14.3	10	22.2
Storage of food materials	Closed containers	6	25.0	5	23.8	11	24.4
	In closed gunny/polythene bags	16	66.7	14	66.7	30	66.7
	Openly left	2	8.3	2	9.5	4	8.9
	Presence of insects in the store room	1	4.2	1	4.8	2	4.4
	Insecticidal measures followed	1	4.2	1	4.8	2	4.4

Chapter 7

Summary and Recommendations

The team has summarized following good practices observed, areas of further improvements and recommendations which are feasible and practical with a bigger objective to accrue maximum benefits out of the resources and efforts mobilized for the scheme.

7.1. Good Practices observed

- State has been providing eggs / bananas thrice a week by providing additional cost of Rs 5 per egg from its own resources.
- State has been providing meals to the students of classes IX & X from its own resources.
- Ragi java has been provided as breakfast in 5 mandals in Yadadri Bhuvanagiri district by Sri Satya Sai Trust.
- Divi's Laboratory has been providing benches, water coolers, water bottles for children, aprons for cook-cum-helpers in Yadadri Bhuvanagiri district.
- Periodically regular School Health programmes have been conducting State Health services as well as RBSK teams and they are providing IFA tablets, deworming tablets, and immunization services to the school going children.
- Women Self Help Groups have been engaged for providing meals in the schools.
- Super fine quality rice is being provided by the State and students are eating with good taste
- Drinking water facility available to almost all schools under 'Mission Bhageeratha' and in almost all the school's toilet facilities are also available for the boys and girls separately.



- Daily PM Poshan Scheme meal testing register is maintained almost the schools. Every day one teacher and one student has been tasting the meal and recording their opinion in the above registers.

7.2. Areas of Concern

- The Govt of India has increased the material cost (earlier known as cooking cost) w.e.f. 1st October, 2022 to Rs 5.45 per child per day in primary and Rs 8.17 per child per day in upper primary. However, in this State, still old rates only being followed (Rs 4.97 and Rs 7.45 per child per day for primary and upper primary, respectively).
- The PAB-PM POSHAN has approved the proposal of State to provide supplementary nutrition items i.e. i) Millet soup (Ragi Java) to 7.75 lakh children for 59 days in 16,828 schools in primary classes and ii) Sprouts with Jaggery to 4.48 lakh children for 61 days in 7277 schools in upper primary classes at an estimated expenditure of Rs 1370.62 Lakh, comprising of Rs 822.37 lakh as central share and Rs 548.25 lakh as State share. However, State Govt has not implemented the same as on date.
- Most of the functionaries and SMC were not aware of the PM Poshan Scheme objectives and nutrition norms/entitlement
- Most of the students and parents requested to provide eggs daily and some of them also requested to provide milk/butter milk daily.
- Almost all the CCHs said that they did not receive any training programme on cooking methods, sanitation, hygiene and food safety aspects.
- About 25% of school children were suffering from undernutrition and it was high in Yadadri Bhuvanagiri district as compared to Khammam (22%).
- The entitlement of nutrition norms of children, PM Poshan menu and its logo are not displayed in many of the schools visited at a prominent place.
- State has not yet conducted Social Audit.

Draining of cooked water should be discouraged



- The food grains allocation system needs to be further strengthened as some schools are managing the scheme by borrowing rice from nearby schools, because they are not getting timely.
- Kitchen devices have not been procured even after 2 and half year of release of central Govt. Funds.
- Kitchen-cum-stores not available in majority of the schools.
- Firewood was used for cooking in almost all the schools and lot of smoke is being accumulated in the premises.
- Monitoring at school level is not adequate, even though sometimes cluster resource persons, mandal education officers are visiting, but most of the times they are recording generic remarks about the scheme, not focusing on specific aspects.
- Schools are maintaining lot of records such as daily enrolment, daily social group wise attendance which can be avoided to reduce burden on the teachers. There is no uniform register for maintaining information on implementation of the Scheme. Different formats were also used in different schools, for record keeping.
- Emergency telephone numbers such as fire, police and Medical services were not displayed in prominent places in most of the schools.
- Storage bins were not available in majority of the schools for keeping food grains/vegetables/other cooking items

GLV not to BE WASHED AFTER CUTTING



7.3. Recommendations


- State should adopt stringent mechanism to ensure that children receive the prescribed quantities of foodgrains, pulses, vegetables and other ingredients as per their entitlement.
- The entitlement of children, PM Poshan logo and PM Poshan menu should be painted at a prominent place in the school premises.
- It was observed that on three days in a week, there is no inclusion of pulses in the Poshan menu. Pulses should be provided daily as per the norms under the PM POSHAN in various forms to get quality protein daily.

- It was observed in the diet surveys, the norms macronutrients like energy 450Kcal/child/day for primary school children and 700Kcal/child/day of energy for upper primary school children are not meeting through the PM Poshan Scheme. Steps may be taken to ensure that the children should get adequate/stipulated energy under the scheme.
- Periodical orientation training may be arranged for Members of School Management Committees on the PM Poshan Scheme objectives, nutrition norms and entitlements of children under the scheme to enable them to monitor the programme in a better manner.
- Since most of the students and parents requested to provide eggs daily and some of them also requested to provide milk/butter milk daily, then only children eat enough food in the lunch, the authorities may look into these aspects for its feasibility implementation.
- Training of CCHs on cooking methods, sanitation, hygiene and food safety aspects.
- Social Audit to be conducted in all districts as per the PM POSHAN Scheme guidelines.
- Kitchen devices to be procured immediately.
- Construction of kitchen-cum-stores to be completed on priority basis.
- Storage bins for safe storage of food grains may be provided to all schools.
- State level/District level officials should also visit in a samples of schools regularly to oversee the implementation of scheme.
- State Government may also constitute a State Level Review Missions to oversee the overall implementation of the scheme.
- State may also constitute a monitoring and supervision (5-6 officers from State/ Districts/ Mandal levels) for concurrent monitoring and supervision of the scheme.
- LPG connections may be provided to the schools as all the schools are using fire wood for cooking.
- Emergency numbers such as police, fire and medical should be painted on school walls on prominent places
- A simple format may be devised for keeping records of important components of the scheme and these may be circulated to schools, to ease out the burden on teachers and also for uniformity of record keeping and ease of data maintenance.
- Awareness generation of the Scheme may be carried out by publicity through print and electronic media and with judicious use of social media.
- Kitchen garden developed by some schools should be replicated in other school wherever it can be possible.


- Millets may be included in the menu once in a week.
- Training and sensitization of cook-cum-helpers and officials at different level.
- Honorarium to cook cum helper needs to be increased as it is difficult to engage CCH with the present honorarium.
- Sensitization of teachers, and officials at different levels.


(Dinesh Prasad)


(Bhupendra Kumar)


(N. ARLAPPA)


(G. Vijaya Bhaskar)


Team Leader
(B. S. LAKSHMI)

Annexures

Annexure-I

Visited Schools in Khammam and Yadadri							
Sl.	District	Block	School Name	School Type	Category	Enrolment	Data of Visits
1	Khammam	Kalluar	MPS Kalluar	Co-Education	Govt.	155	21-11-2022
2	Khammam	Kalluar	Govt. High School Kalluar	Co-Education	Govt.	183	21-11-2022
3	Khammam	Kalluar	MPPS Narayananpuran	Co-Education	Govt.	73	21-11-2022
4	Khammam	Kalluar	ZPSH Chennar	Co-Education	Govt.	113	21-11-2022
5	Khammam	Kalluar	MPPSPochavaran	Co-Education	Govt.	31	21-11-2022
6	Khammam	Kalluar	MPPS Chinnakarukondhi	Co-Education	Govt.	64	21-11-2022
7	Khammam	Kalluar	ZPSH Chhakarukondi	Co-Education	Govt.	122	21-11-2022
8	Khammam	Kalluar	ZPSH Nuthankal	Co-Education	Govt.	67	21-11-2022
9	Khammam	Konuerla	MPUPS Salebanjar	Co-Education	Govt.	40	21-11-2022
10	Khammam	Konuerla	MPPS Teegala Banjar	Co-Education	Govt.	41	22-11-2022
11	Khammam	Konuerla	MPPS Pallipadu	Co-Education	Govt.	36	22-11-2022
12	Khammam	Konuerla	ZPHS Pallipadu	Co-Education	Govt.	66	22-11-2022
13	Khammam	Konuerla	MPHS Kornerla HW	Co-Education	Govt.	103	22-11-2022
14	Khammam	Konuerla	MPPS Konuerla	Co-Education	Govt.	86	22-11-2022
15	Khammam	Konuerla	ZPHS Konuerla	Co-Education	Govt.	328	22-11-2022
16	Khammam	Enkuru	ZPSH Enkuru	Co-Education	Govt.	134	22-11-2022
17	Khammam	Enkuru	MPPS BN Thanda	Co-Education	Govt.	29	22-11-2022
18	Khammam	Kominepally	ZPHS Kominepally	Co-Education	Govt.	100	21-11-2022
19	Khammam	Kominepally	ZPSS Koyachalaka	Co-Education	Govt.	85	21-11-2022
20	Khammam	Raghunadapalem	MPPS Davedu	Co-Education	Govt.	42	21-11-2022
21	Khammam	Raghunathpalem	MPPS Janbad Thanda	Co-Education	Govt.	17	21-11-2022

Visited Schools in Khammam and Yadadri

Sl.	District	Block	School Name	School Type	Category	Enrolment	Data of Visits
22	Khammam	Kominepally	MPPS Kominepally	Co-Education	Govt.	47	21-11-2022
23	Khammam	Kominepally	ZPHS Ponnekal	Co-Education	Govt.	132	21-11-2022
24	Khammam	Bonkal	ZPSS Ravinthula	Co-Education	Govt.	94	22-11-2022
25	Khammam	Bonkal	MPPS Peddabeeravalli	Co-Education	Govt.	58	22-11-2022
26	Khammam	Bonkal	ZPHS Motamari	Co-Education	Govt.	46	22-11-2022
27	Khammam	Madhira	UPS Vangaveedu	Co-Education	Govt.	111	22-11-2022
28	Khammam	Wyra	ZPSS (Girls) Wyra	Girls	Govt.	168	22-11-2022
29	Khammam	Wyra	MPPS Wyra	Co-Education	Govt.	133	22-11-2022
30	Yadadri	Chautoppal	MPUPS Bangarigadda	Co-Education	Govt.	360	23-11-2022
31	Yadadri	Chautoppal	MPPS Thangadpelly	Co-Education	Govt.	204	23-11-2022
32	Yadadri	Chautoppal	ZPHS Koyyalagudum	Co-Education	Govt.	213	23-11-2022
33	Yadadri	Chautoppal	MPPS Koyyalagudum	Co-Education	Govt.	125	23-11-2022
34	Yadadri	Chautoppal	MPPS Lakhiram	Co-Education	Govt.	264	24-11-2022
35	Yadadri	Chautoppal	Telangana State Model School	Co-Education	Govt.	294	24-11-2022
36	Yadadri	Chautoppal	MPPS BC Colony	Co-Education	Govt.	136	24-11-2022
37	Yadadri	Chautoppal	MPPS Pantangi	Co-Education	Govt.	133	24-11-2022
38	Yadadri	Chautoppal	ZPHS Panthangi	Co-Education	Govt.	58	24-11-2022
39	Yadadri	Narajanpur	MPPS Surval	Co-Education	Govt.	64	24-11-2022
40	Yadadri	Narajanpur	ZPHS Sarval	Co-Education	Govt.	75	24-11-2022
41	Yadadri	Narajanpur	MPPS Kankanalagudem	Co-Education	Govt.	14	24-11-2022
42	Yadadri	Pochampally	MPPS Dothigudem	Co-Education	Govt.	47	23-11-2022
43	Yadadri	Pochampally	MPPS Jalalpur	Co-Education	Govt.	50	23-11-2022
44	Yadadri	Pochampally	ZPHS Girls Pochampally	Girls	Govt.	85	23-11-2022
45	Yadadri	Pochampally	ZPHS Pochampally	Co-Education	Govt.	280	23-11-2022
46	Yadadri	Bommala RamaRam	PS Machanpally	Co-Education	Govt.	23	24-11-2022
47	Yadadri	Bommala RamaRam	ZPHS Cheekatimamidi	Co-Education	Govt.	207	24-11-2022

Visited Schools in Khammam and Yadadri

Sl.	District	Block	School Name	School Type	Category	Enrolment	Data of Visits
48	Yadadri	Bhongir	MPUPS Wadaparthi	Co-Education	Govt.	68	24-11-2022
49	Yadadri	Thurkapally	TS Model School Thurkapally	Co-Education	Govt.	291	24-11-2022
Total Enrolment of the visited Schools						5695	

Annexure- II

Coverage of Children during 10 days of JRM Visit																
Sl.	District	Block	School	Enrolment	1st day of Visit	2nd Day	3rd Day	4th Day	5th Day	6th Day	7th Day	8th Day	9th Day	10th Day	Average	%age Attendance
1	Khammam	Kalluar	MPS Kalluar	155	110	131	126	125	131	126	129	130	129	131	127	82%
2	Khammam	Kalluar	Govt. High School Kalluar	183	126	118	123	141	126	126	153	130	130	130	130	71%
3	Khammam	Kalluar	MPPS Narayanapuram	73	67	70	70	69	68	70	69	68	71	69	69	95%
4	Khammam	Kalluar	ZPSH Chennar	113	71	82	92	93	92	85	79	80	94	86	85	75%
5	Khammam	Kalluar	MPPSPochavaran	31	31	30	30	28	31	30	30	30	29	30	30	97%
6	Khammam	Kalluar	MPPS Chinnakarukondhi	64	52	53	53	52	45	45	59	59	58	59	54	84%
7	Khammam	Kalluar	ZPSH Chhakarukondi	122	85	102	97	93	85	85	67	100	97	80	89	73%
8	Khammam	Kalluar	ZPSH Nuthankal	67	67	49	47	53	62	59	56	63	63	51	57	85%
9	Khammam	Konuerla	MPUPS Salebanjar	40	36	30	37	35	34	29	26	30	36	35	33	83%
10	Khammam	Konuerla	MPPS Teegala Banjar	41	34	36	35	38	38	37	38	39	39	35	37	90%
11	Khammam	Konuerla	MPPS Pallipadu	36	30	31	35	36	36	35	35	35	36	36	35	97%
12	Khammam	Konuerla	ZPHS Pallipadu	66	53	52	54	54	52	56	53	55	56	58	54	82%



Coverage of Children during 10 days of JRM Visit

Sl.	District	Block	School	Enrolment	1st day of Visit	2nd Day	3rd Day	4th Day	5th Day	6th Day	7th Day	8th Day	9th Day	10th Day	Average	%age Attendance
13	Khammam	Konuerla	MPHS Kornuerla HW	103	92	93	92	92	96	91	94	97	96	94	94	91%
14	Khammam	Konuerla	MPPS Konuerla	86	76	81	78	82	82	81	63	73	82	84	78	91%
15	Khammam	Konuerla	ZPHS Konuerla	328	291	281	292	295	294	278	176	286	265	289	275	84%
16	Khammam	Enkuru	ZPSH Enkuru	134	92	87	86	102	95	102	88	108	87	86	93	69%
17	Khammam	Enkuru	MPPS BN Thanda	29	29	26	25	23	25	26	25	28	26	24	26	90%
18	Khammam	Kominepally	ZPHS Kominepally	100	72	79	68	75	81	77	71	63	67	73	73	73%
19	Khammam	Kominepally	ZPSS Koyachalaka	85	82	80	80	78	64	72	89	72	72	71	76	89%
20	Khammam	Raghnadapalem	MPPS Davedu	42	34	35	36	37	35	34	34	35	34	33	35	83%
21	Khammam	Raghnathpalem	MPPS Janbad Thanda	17	16	12	12	12	14	11	13	14	11	15	13	76%
22	Khammam	Kominepally	MPPS Kominepally	47	34	36	43	44	43	42	41	40	34	41	40	85%
23	Khammam	Kominepally	ZPHS Ponnekal	132	103	117	118	103	103	103	107	107	107	95	106	80%
24	Khammam	Bonkal	ZPSS Ravinthula	94	76	73	72	69	74	81	80	77	80	73	76	81%
25	Khammam	Bonkal	MPPS Peddabeeravalli	58	47	42	45	49	50	50	51	45	52	55	49	84%



Coverage of Children during 10 days of JRM Visit

Sl.	District	Block	School	Enrolment	1st day of Visit	2nd Day	3rd Day	4th Day	5th Day	6th Day	7th Day	8th Day	9th Day	10th Day	Average	%age Attendance
26	Khammam	Bonkal	ZPHS Motamari	46	35	37	33	40	42	37	38	37	43	37	38	83%
27	Khammam	Madhira	UPS Vangaveedu	111	89	92	85	101	96	102	93	88	87	87	92	83%
28	Khammam	Wyra	ZPSS (Girls) Wyra	168	113	131	115	129	113	108	98	146	145	143	124	74%
29	Khammam	Wyra	MPPS Wyra	133	123	122	103	118	121	115	119	123	125	125	119	89%
30	Yadadri	Chautoppal	MPUPS Bangarigadda	360	258	245	222	194	246	227	276	256	232	269	243	68%
31	Yadadri	Chautoppal	MPPS Thangadpelly	204	182	162	155	172	171	177	169	176	157	173	169	83%
32	Yadadri	Chautoppal	ZPHS Koyyalagudum	213	183	184	160	172	177	153	202	203	151	203	179	84%
33	Yadadri	Chautoppal	MPPS Koyyalagudum	125	93	101	106	104	150	105	106	103	104	104	108	86%
34	Yadadri	Chautoppal	MPPS Lakhiram	264	33	46	53	53	52	44	54	49	43	37	46	17%
35	Yadadri	Chautoppal	Telangana State Model School	294	113	130	226	226	233	223	209	258	246	238	210	71%
36	Yadadri	Chautoppal	MPPS BC Colony	136	61	98	105	110	107	113	102	114	108	105	102	75%
37	Yadadri	Chautoppal	MPPS Pantangi	133	95	108	119	105	115	111	118	115	114	121	112	84%
38	Yadadri	Chautoppal	ZPHS Panthangi	58	42	45	46	38	41	42	42	44	44	37	42	72%



Coverage of Children during 10 days of JRM Visit

Sl.	District	Block	School	Enrolment	1st day of Visit	2nd Day	3rd Day	4th Day	5th Day	6th Day	7th Day	8th Day	9th Day	10th Day	Average	%age Attendance
39	Yadadri	Narajanpur	MPPS Surval	64	52	51	56	52	55	52	55	55	53	53	53	83%
40	Yadadri	Narajanpur	ZPHS Sarval	75	65	68	61	60	63	55	58	72	73	65	64	85%
41	Yadadri	Narajanpur	MPPS Kankanalagudem	14	10	12	11	9	10	11	12	13	11	13	11	79%
42	Yadadri	Pochampally	MPPS Dothigudem	47	43	42	44	44	43	41	45	47	45	46	44	94%
43	Yadadri	Pochampally	MPPS Jalalpur	50	37	33	44	38	42	43	42	41	44	46	41	82%
44	Yadadri	Pochampally	ZPHS Girls Pochampally	85	53	52	47	40	42	31	64	62	50	58	50	59%
45	Yadadri	Pochampally	ZPHS Pochampally	280	195	195	132	181	185	188	204	190	161	194	183	65%
46	Yadadri	Bommam RamaRam	PS Machanpally	23	18	20	20	23	21	21	21	21	23	23	21	91%
47	Yadadri	Bommam RamaRam	ZPHS Cheekatimamidi	207	170	162	151	142	157	139	184	187	132	192	162	78%
48	Yadadri	Bhongir	MPUPS Wadaparthi	68	56	57	64	53	66	68	64	65	66	65	62	91%
49	Yadadri	Thurkapally	TS Model School Thurkapally	291	104	104	101	108	73	100	75	67	89	97	92	32%

Coverage of Children during 10 days of JRM Visit

Sl.	District	Block	School	Enrolment	1st day of Visit	2nd Day	3rd Day	4th Day	5th Day	6th Day	7th Day	8th Day	9th Day	10th Day	Average	%age Attendance
Total				5695	4029	4123	4105	4190	4277	4137	4176	4396	4197	4364	4199	74%
Percentage					71%	72%	72%	74%	75%	73%	73%	77%	74%	77%	74%	



Annexure- III

Publicity and awareness of the MP POSHAN

Sl.	District	Block	School	Enrolment	Display Menu	Menu decided by	Display of MDM Logo	Display of children entitlement	Logo of PM POSHAN
1	Khammam	Kalluar	MPS Kalluar	155	Yes	State	Flexi-board hanging on the wall of school	No	No
2	Khammam	Kalluar	Govt. High School Kalluar	183	Yes	State	-do-	No	No
3	Khammam	Kalluar	MPPS Narayanapuram	73	Yes	State	-do-	No	No
4	Khammam	Kalluar	ZPSH Chennar	113	Yes	State	-do-	No	No
5	Khammam	Kalluar	MPPSPochavaran	31	Yes	State	-do-	No	No
6	Khammam	Kalluar	MPPS Chinnakarukondhi	64	Yes	State	-do-	No	No
7	Khammam	Kalluar	ZPSH Chhakarukondi	122	Yes	State	-do-	No	No
8	Khammam	Kalluar	ZPSH Nuthankal	67	Yes	State	-do-	No	No
9	Khammam	Konuerla	MPUPS Salebanjar	40	Yes	State	-do-	No	No
10	Khammam	Konuerla	MPPS Teegala Banjar	41	Yes	State	-do-	No	No
11	Khammam	Konuerla	MPPS Pallipadu	36	Yes	State	-do-	No	No
12	Khammam	Konuerla	ZPHS Pallipadu	66	Yes	State	-do-	No	No
13	Khammam	Konuerla	MPHS Kornerla HW	103	Yes	State	-do-	No	No
14	Khammam	Konuerla	MPPS Konuerla	86	Yes	State	-do-	No	No
15	Khammam	Konuerla	ZPHS Konuerla	328	Yes	State	-do-	No	No
16	Khammam	Enkuru	ZPSH Enkuru	134	Yes	State	-do-	No	No
17	Khammam	Enkuru	MPPS BN Thanda	29	Yes	State	-do-	No	No
18	Khammam	Kominepally	ZPHS Kominepally	100	No	State	No	No	No
19	Khammam	Kominepally	ZPSS Koyachalaka	85	Yes	State	Yes	yes	Yes
20	Khammam	Raghunadapalem	MPPS Davedu	42	No	State	No	No	No
21	Khammam	Raghunathpalem	MPPS Janbad Thanda	17	Yes	State	Yes	No	Yes

Publicity and awareness of the MP POSHAN

Sl.	District	Block	School	Enrolment	Display Menu	Menu decided by	Display of MDM Logo	Display of children entitlement	Logo of PM POSHAN
22	Khammam	Kominepally	MPPS Kominepally	47	No	State	No	No	No
23	Khammam	Kominepally	ZPHS Ponnekal	132	Yes	State	Yes	yes	Yes
24	Khammam	Bonkal	ZPSS Ravinthula	94	No	State	Yes	No	Yes
25	Khammam	Bonkal	MPPS Peddabeeravalli	58	No	State	No	No	No
26	Khammam	Bonkal	ZPHS Motamari	46	Yes	State	Yes	yes	Yes
27	Khammam	Madhira	UPS Vangaveedu	111	Yes	State	Yes	yes	Yes
28	Khammam	Wyra	ZPSS (Girls) Wyra	168	Yes	State	Yes	yes	Yes
29	Khammam	Wyra	MPPS Wyra	133	Yes	State	Yes	yes	Yes
30	Yadadri	Chautoppal	MPUPS Bangarigadda	360	Yes	State	Yes	Yes	No
31	Yadadri	Chautoppal	MPPS Thangadpelly	204	Yes	State	Yes	Yes	No
32	Yadadri	Chautoppal	ZPHS Koyyalagudum	213	Yes	State	Yes	Yes	No
33	Yadadri	Chautoppal	MPPS Koyyalagudum	125	Yes	State	Yes	Yes	No
34	Yadadri	Chautoppal	MPPS Lakhiram	264	Yes	State	Yes	Yes	No
35	Yadadri	Chautoppal	Telangana State Model School	294	Yes	State	Yes	Yes	No
36	Yadadri	Chautoppal	MPPS BC Colony	136	Yes	State	Yes	Yes	No
37	Yadadri	Chautoppal	MPPS Pantangi	133	Yes	State	Yes	Yes	No
38	Yadadri	Chautoppal	ZPHS Panthangi	58	Yes	State	Yes	Yes	No
39	Yadadri	Narajanpur	MPPS Surval	64	Yes	State	Yes	Yes	No
40	Yadadri	Narajanpur	ZPHS Sarval	75	Yes	State	Yes	Yes	No
41	Yadadri	Narajanpur	MPPS Kankanalgudem	14	Yes	State	Yes	Yes	No
42	Yadadri	Pochampally	MPPS Dothigudem	47	Yes	State	Yes	yes	Yes
43	Yadadri	Pochampally	MPPS Jalalpur	50	Yes	State	Yes	yes	Yes
44	Yadadri	Pochampally	ZPHS Girls Pochampally	85	Yes	State	Yes	yes	Yes

Publicity and awareness of the MP POSHAN

Sl.	District	Block	School	Enrolment	Display Menu	Menu decided by	Display of MDM Logo	Display of children entitlement	Logo of PM POSHAN
45	Yadadri	Pochampally	ZPHS Pochampally	280	No	State	No	No	Yes
46	Yadadri	Bommal RamaRam	PS Machanpally	23	Yes	State	Yes	yes	Yes
47	Yadadri	Bommal RamaRam	ZPHS Cheekatimamidi	207	Yes	State	Yes	yes	Yes
48	Yadadri	Bhongir	MPUPS Wadaparthi	68	Yes	State	Yes	yes	Yes
49	Yadadri	Thurkapally	TS Model School Thurkapally	291	No	State	No	No	No

Annexure-IV

Infrastructure available at schools level									
Sl.	District	Block	School	Enrolment	Avaibility			Mode of Cooking	Remarks
					Kitchen	Kitchen devices	Eating plates		
1	Khammam	Kalluar	MPS Kalluar	155	Yes	Yes	Yes	Firewood	Cook-cum-helpers arrange the firewood for cooking
2	Khammam	Kalluar	Govt. High School Kalluar	183	Yes	Yes	Yes	Firewood	-do-
3	Khammam	Kalluar	MPPS Narayananpuran	73	Yes	Yes	Yes	Firewood	-do-
4	Khammam	Kalluar	ZPSH Chennar	113	Yes	Yes	Yes	Firewood	-do-
5	Khammam	Kalluar	MPPSPochavaran	31	Yes	Yes	Yes	Firewood	-do-
6	Khammam	Kalluar	MPPS Chinnakarukondhi	64	Yes	Yes	Yes	Firewood	-do-
7	Khammam	Kalluar	ZPSH Chhakarukondi	122	Yes	Yes	Yes	Firewood	-do-
8	Khammam	Kalluar	ZPSH Nuthankal	67	Yes	Yes	Yes	Firewood	-do-
9	Khammam	Konuerla	MPUPS Salebanjar	40	No (cooking outside)	Yes	Yes	Firewood	-do-
10	Khammam	Konuerla	MPPS Teegala Banjar	41	Yes	Yes	Yes	Firewood	-do-
11	Khammam	Konuerla	MPPS Pallipadu	36	Yes	Yes	Yes	Firewood	-do-
12	Khammam	Konuerla	ZPHS Pallipadu	66	No (under construction)	Yes	Yes	Firewood	-do-
13	Khammam	Konuerla	MPHS Kornuerla HW	103	Yes	Yes	Yes	Firewood	-do-
14	Khammam	Konuerla	MPPS Konuerla	86	Yes	Yes	Yes	Firewood	-do-

Infrastructure available at schools level

Sl.	District	Block	School	Enrolment	Avaibility			Mode of Cooking	Remarks
					Kitchen	Kitchen devices	Eating plates		
15	Khammam	Konuerla	ZPHS Konuerla	328	Yes	Yes	Yes	Firewood	-do-
16	Khammam	Enkuru	ZPSH Enkuru	134	Yes	Yes	Yes	Firewood	-do-
17	Khammam	Enkuru	MPPS BN Thanda	29	No	Yes	Yes	Firewood	-do-
18	Khammam	Kominepally	ZPHS Komninepally	100	No	Yes	Yes	Firewood	-do-
19	Khammam	Kominepally	ZPSS Koyachalaka	85	Yes	Yes	Yes	Firewood	-do-
20	Khammam	Raghunadapalem	MPPS Davedu	42	Yes	Yes	Yes	Firewood	-do-
21	Khammam	Raghunathpalem	MPPS Janbad Thanda	17	Yes	Yes	Yes	Firewood	-do-
22	Khammam	Kominepally	MPPS Kominepally	47	Yes	Yes	Yes	Firewood	-do-
23	Khammam	Kominepally	ZPHS Ponnekal	132	Yes	Yes	Yes	Firewood	-do-
24	Khammam	Bonkal	ZPSS Ravinthula	94	Yes	Yes	Yes	Firewood	-do-
25	Khammam	Bonkal	MPPS Peddabeeravalli	58	Yes	Yes	Yes	Firewood	-do-
26	Khammam	Bonkal	ZPHS Motamari	46	Yes	Yes	Yes	Firewood	-do-
27	Khammam	Madhira	UPS Vangaveedu	111	Yes	Yes	Yes	Firewood	-do-
28	Khammam	Wyra	ZPSS (Girls) Wyra	168	Yes	Yes	Yes	Firewood	-do-
29	Khammam	Wyra	MPPS Wyra	133	Yes	Yes	Yes	Firewood	-do-
30	Yadadri	Chautoppal	MPUPS Bangarigadda	360	Yes	Yes	Yes	Firewood	-do-
31	Yadadri	Chautoppal	MPPS Thangadpelly	204	Yes	Yes	Yes	Firewood	-do-
32	Yadadri	Chautoppal	ZPHS Koyyalagudum	213	Yes	Yes	Yes	Firewood	-do-
33	Yadadri	Chautoppal	MPPS Koyyalagudum	125	Yes	Yes	Yes	Firewood	-do-
34	Yadadri	Chautoppal	MPPS Lakhiram	264	Yes	Yes	Yes	Firewood	-do-

Infrastructure available at schools level

Sl.	District	Block	School	Enrolment	Avaibility			Mode of Cooking	Remarks
					Kitchen	Kitchen devices	Eating plates		
35	Yadadri	Chautoppal	Telangana State Model School	294	Yes	Yes	Yes	Firewood	-do-
36	Yadadri	Chautoppal	MPPS BC Colony	136	Yes	Yes	Yes	Firewood	-do-
37	Yadadri	Chautoppal	MPPS Pantangi	133	Yes	Yes	Yes	Firewood	-do-
38	Yadadri	Chautoppal	ZPHS Panthangi	58	Yes	Yes	Yes	Firewood	-do-
39	Yadadri	Narajanpur	MPPS Surval	64	Yes	Yes	Yes	Firewood	-do-
40	Yadadri	Narajanpur	ZPHS Sarval	75	Yes	Yes	Yes	Firewood	-do-
41	Yadadri	Narajanpur	MPPS Kankanalagudem	14	Yes	Yes	Yes	Firewood	-do-
42	Yadadri	Pochampally	MPPS Dothigudem	47	Yes	Yes	Yes	Firewood	Cook-cum-helpers arrange the firewood for cooking
43	Yadadri	Pochampally	MPPS Jalalpur	50	Yes	Yes	Yes	Firewood	-do-
44	Yadadri	Pochampally	ZPHS Girls Pochampally	85	No (Addl class room used)	Yes	Yes	Firewood	-do-
45	Yadadri	Pochampally	ZPHS Pochampally	280	No (Cooking in open)	Yes	Yes	Firewood	-do-
46	Yadadri	Bommam RamaRam	PS Machanpally	23	Yes	Yes	Yes	Firewood	-do-
47	Yadadri	Bommam RamaRam	ZPHS Cheekatimamidi	207	Yes	Yes	Yes	Firewood	-do-
48	Yadadri	Bhongir	MPUPS Wadaparthi	68	Yes	Yes	Yes	Firewood	-do-

Infrastructure available at schools level

Sl.	District	Block	School	Enrolment	Avaibility			Mode of Cooking	Remarks
					Kitchen	Kitchen devices	Eating plates		
49	Yadadri	Thurkapally	TS Model School Thurkapally	291	No	Yes	Yes	Firewood	-do-



Annexure-V

Cook-cum-helpers details

Sl.	District	Block	School	Enrolment	Cook-cum-helpers			Payment of Honorarium	Honorarium per cook per month (in Rs.)	Mode of payment	Honorarium received	Training provided
					Male	Female	Total	Regular				
1	Khammam	Kalluar	MPS Kalluar	155	0	3	3	yes	1000	E-transfer	Yes	Yes
2	Khammam	Kalluar	Govt. High School Kalluar	183	0	3	3	yes	1000	E-transfer	Yes	Yes
3	Khammam	Kalluar	MPPS Narayananpura	73	0	2	2	yes	1000	E-transfer	Yes	Yes
4	Khammam	Kalluar	ZPSH Chennar	113	0	6	6	yes	1000	E-transfer	Yes	Yes
5	Khammam	Kalluar	MPPSPochavaran	31	0	1	1	yes	1000	E-transfer	Yes	Yes
6	Khammam	Kalluar	MPPS Chinnakarukondhi	64	1	2	3	yes	1000	E-transfer	Yes	Yes
7	Khammam	Kalluar	ZPSH Chhakarukondi	122	0	3	3	yes	1000	E-transfer	Yes	Yes
8	Khammam	Kalluar	ZPSH Nuthankal	67	0	2	2	yes	1000	E-transfer	Yes	Yes
9	Khammam	Konuerla	MPUPS Salebanjar	40	0	1	1	yes	1000	E-transfer	Yes	Yes
10	Khammam	Konuerla	MPPS Teegala Banjar	41	0	1	1	yes	1000	E-transfer	Yes	Yes
11	Khammam	Konuerla	MPPS Pallipadu	36	0	2	2	yes	1000	E-transfer	Yes	Yes
12	Khammam	Konuerla	ZPHS Pallipadu	66	0	2	2	yes	1000	E-transfer	Yes	Yes
13	Khammam	Konuerla	MPHS Kornuerla HW	103	0	3	3	yes	1000	E-transfer	Yes	Yes
14	Khammam	Konuerla	MPPS Konuerla	86	0	3	3	yes	1000	E-transfer	Yes	Yes
15	Khammam	Konuerla	ZPHS Konuerla	328	0	4	4	yes	1000	E-transfer	Yes	Yes

Cook-cum-helpers details

Sl.	District	Block	School	Enrolment	Cook-cum-helpers			Payment of Honorarium	Honorarium per cook per month (in Rs.)	Mode of payment	Honorarium received	Training provided
					Male	Female	Total	Regular				
16	Khammam	Enkuru	ZPSH Enkuru	134	0	1	1	yes	1000	E-transfer	Yes	Yes
17	Khammam	Enkuru	MPPS BN Thanda	29	0	1	1	yes	1000	E-transfer	Yes	Yes
18	Khammam	Kominepally	ZPHS Kominepally	100	0		0			E-transfer	Yes	Yes
19	Khammam	Kominepally	ZPSS Koyachalaka	85	0	3	3	yes	1000	E-transfer	Yes	Yes
20	Khammam	Raghnadapalem	MPPS Davedu	42	0	3	3	yes	1000	E-transfer	Yes	Yes
21	Khammam	Raghnathpalem	MPPS Janbad Thanda	17	0	2	2	yes	1000	E-transfer	Yes	Yes
22	Khammam	Kominepally	MPPS Kominepally	47	0	1	1	yes	1000	E-transfer	Yes	Yes
23	Khammam	Kominepally	ZPHS Ponnekal	132	0	2	2	yes	1000	E-transfer	Yes	Yes
24	Khammam	Bonkal	ZPSS Ravinthula	94	0	3	3	yes	1000	E-transfer	Yes	Yes
25	Khammam	Bonkal	MPPS Peddabeeravalli	58	0	4	4	yes	1000	E-transfer	Yes	Yes
26	Khammam	Bonkal	ZPHS Motamari	46	0	3	3	yes	1000	E-transfer	Yes	Yes
27	Khammam	Madhira	UPS Vangaveedu	111	0	2	2	yes	1000	E-transfer	Yes	Yes
28	Khammam	Wyra	ZPSS (Girls) Wyra	168	0	2	2	yes	1000	E-transfer	Yes	Yes
29	Khammam	Wyra	MPPS Wyra	133	0	2	2	yes	1000	E-transfer	Yes	Yes
30	Yadadri	Chautoppal	MPUPS Bangarigadda	360			0			E-transfer	Yes	Yes
31	Yadadri	Chautoppal	MPPS Thangadpelly	204	0	3	3	yes	1000	E-transfer	Yes	Yes
32	Yadadri	Chautoppal	ZPHS Koyyalagudum	213	0	3	3	yes	1000	E-transfer	Yes	Yes

Cook-cum-helpers details

Sl.	District	Block	School	Enrolment	Cook-cum-helpers			Payment of Honorarium	Honorarium per cook per month (in Rs.)	Mode of payment	Honorarium received	Training provided
					Male	Female	Total	Regular				
33	Yadadri	Chautoppal	MPPS Koyalagudum	125	0	3	3	yes	1000	E-transfer	Yes	Yes
34	Yadadri	Chautoppal	MPPS Lakhiram	264	0	3	3	yes	1000	E-transfer	Yes	Yes
35	Yadadri	Chautoppal	Telangana State Model School	294	0	2	2	yes	1000	E-transfer	Yes	Yes
36	Yadadri	Chautoppal	MPPS BC Colony	136	2	2	4	yes	1000	E-transfer	Yes	Yes
37	Yadadri	Chautoppal	MPPS Pantangi	133	0	2	2	yes	1000	E-transfer	Yes	Yes
38	Yadadri	Chautoppal	ZPHS Panthangi	58	0	3	3	yes	1000	E-transfer	Yes	Yes
39	Yadadri	Narajanpur	MPPS Surval	64	0	3	3	yes	1000	E-transfer	Yes	Yes
40	Yadadri	Narajanpur	ZPHS Sarval	75	0	3	3	yes	1000	E-transfer	Yes	Yes
41	Yadadri	Narajanpur	MPPS Kankanalagudem	14	0	3	3	yes	1000	E-transfer	Yes	Yes
42	Yadadri	Pochampally	MPPS Dothigudem	47	0	1	1	yes	1000	E-transfer	Yes	Yes
43	Yadadri	Pochampally	MPPS Jalalpur	50	0	1	1	yes	1000	E-transfer	Yes	Yes
44	Yadadri	Pochampally	ZPHS Girls Pochampally	85	0	1	1	yes	1000	E-transfer	Yes	Yes
45	Yadadri	Pochampally	ZPHS Pochampally	280	0	2	2	yes	1000	E-transfer	Yes	Yes
46	Yadadri	Bommal RamaRam	PS Machanpally	23	0	4	4	yes	1000	E-transfer	Yes	Yes
47	Yadadri	Bommal RamaRam	ZPHS Cheekatimamidi	207	0	1	1	yes	1000	E-transfer	Yes	Yes

Cook-cum-helpers details

Sl.	District	Block	School	Enrolment	Cook-cum-helpers			Payment of Honorarium	Honorarium per cook per month (in Rs.)	Mode of payment	Honorarium received	Training provided
					Male	Female	Total	Regular				
48	Yadadri	Bhongir	MPUPS Wadaparthi	68	1	4	5	yes	1000	E-transfer	Yes	Yes
49	Yadadri	Thurkapally	TS Model School Thurkapally	291	0	2	2	yes	1000	E-transfer	Yes	Yes

Annexure-VI

Inspection by higher authorities							
Sl.	District	Block	School	Enrolment	Inspection	Inspected by	
					Carried out	Cluster / Block officials	District officials
1	Khammam	Kalluar	MPS Kalluar	155	Yes	Monthly	Sometimes
2	Khammam	Kalluar	Govt. High School Kalluar	183	Yes	Monthly	Sometimes
3	Khammam	Kalluar	MPPS Narayananpura	73	Yes	Monthly	Sometimes
4	Khammam	Kalluar	ZPSH Chennar	113	Yes	Monthly	Sometimes
5	Khammam	Kalluar	MPPSPochavarana	31	Yes	Monthly	No
6	Khammam	Kalluar	MPPS Chinnakarukondhi	64	Yes	Monthly	No
7	Khammam	Kalluar	ZPSH Chhakarukondi	122	Yes	Monthly	No
8	Khammam	Kalluar	ZPSH Nuthankal	67	Yes	Monthly	No
9	Khammam	Konurula	MPUPS Salebanjar	40	Yes	Monthly	No
10	Khammam	Konurula	MPPS Teegala Banjar	41	Yes	Monthly	No
11	Khammam	Konurula	MPPS Pallipadu	36	Yes	Monthly	No
12	Khammam	Konurula	ZPHS Pallipadu	66	Yes	Monthly	No
13	Khammam	Konurula	MPHS Kornurula HW	103	Yes	Monthly	No
14	Khammam	Konurula	MPPS Konurula	86	Yes	Monthly	No
15	Khammam	Konurula	ZPHS Konurula	328	Yes	Monthly	No
16	Khammam	Enkuru	ZPSH Enkuru	134	Yes	Monthly	No
17	Khammam	Enkuru	MPPS BN Thanda	29	Yes	Monthly	No
18	Khammam	Kominepally	ZPHS Kominepally	100	Yes	Monthly	No
19	Khammam	Kominepally	ZPSS Koyachalaka	85	Yes	Monthly	Sometimes
20	Khammam	Raghunadapalem	MPPS Davedu	42	Yes	Monthly	No
21	Khammam	Raghunathpalem	MPPS Janbad Thanda	17	Yes	Monthly	Sometimes
22	Khammam	Kominepally	MPPS Kominepally	47	Yes	Monthly	No

Inspection by higher authorities

Sl.	District	Block	School	Enrolment	Inspection	Inspected by	
					Carried out	Cluster / Block officials	District officials
23	Khammam	Kominepally	ZPHS Ponnekal	132	Yes	Monthly	No
24	Khammam	Bonkal	ZPSS Ravinthula	94	Yes	Monthly	No
25	Khammam	Bonkal	MPPS Peddabeeravalli	58	Yes	Monthly	No
26	Khammam	Bonkal	ZPHS Motamari	46	Yes	Monthly	Sometimes
27	Khammam	Madhira	UPS Vangaveedu	111	Yes	Monthly	Sometimes
28	Khammam	Wyra	ZPSS (Girls) Wyra	168	Yes	Monthly	Sometimes
29	Khammam	Wyra	MPPS Wyra	133	Yes	Monthly	No
30	Yadadri	Chautoppal	MPUPS Bangarigadda	360	Yes	Monthly	No
31	Yadadri	Chautoppal	MPPS Thangadpelly	204	Yes	Monthly	No
32	Yadadri	Chautoppal	ZPHS Koyyalagudum	213	Yes	Monthly	No
33	Yadadri	Chautoppal	MPPS Koyyalagudum	125	Yes	Monthly	No
34	Yadadri	Chautoppal	MPPS Lakhiram	264	Yes	Monthly	No
35	Yadadri	Chautoppal	Telangana State Model School	294	Yes	Monthly	No
36	Yadadri	Chautoppal	MPPS BC Colony	136	Yes	Monthly	No
37	Yadadri	Chautoppal	MPPS Pantangi	133	Yes	Monthly	No
38	Yadadri	Chautoppal	ZPHS Panthangi	58	Yes	Monthly	No
39	Yadadri	Narajanpur	MPPS Surval	64	Yes	Monthly	No
40	Yadadri	Narajanpur	ZPHS Sarval	75	Yes	Monthly	No
41	Yadadri	Narajanpur	MPPS Kankanalagudem	14	Yes	Monthly	No
42	Yadadri	Pochampally	MPPS Dothigudem	47	Yes	Monthly	No
43	Yadadri	Pochampally	MPPS Jalalpur	50	Yes	Monthly	No
44	Yadadri	Pochampally	ZPHS Girls Pochampally	85	Yes	Monthly	No
45	Yadadri	Pochampally	ZPHS Pochampally	280	Yes	Monthly	No



Inspection by higher authorities

Sl.	District	Block	School	Enrolment	Inspection	Inspected by	
					Carried out	Cluster / Block officials	District officials
46	Yadadri	Bommal RamaRam	PS Machanpally	23	Yes	Monthly	No
47	Yadadri	Bommal RamaRam	ZPHS Cheekatimamidi	207	Yes	Monthly	No
48	Yadadri	Bhongir	MPUPS Wadaparthi	68	Yes	Monthly	No
49	Yadadri	Thurkapally	TS Model School Thurkapally	291	Yes	Monthly	No



Annexure – VII

School Health Programme											
Sl.	District	Block	School	Enrolment	Children Health Card available	Health Check-up	Doctor Visit	Distribution of (IFA, Deworming)	Any teacher as ambassador for SHP	How many children identified as anemic	Ramarks
1	Khammam	Kalluar	MPS Kalluar	155	Yes	Yes	Bi-annual	IFA & Demoring	No	8	
2	Khammam	Kalluar	Govt. High School Kalluar	183	Yes	Yes	Bi-annual	IFA & Demoring	No	12	-do-
3	Khammam	Kalluar	MPPS Narayanapuram	73	Yes	Yes	once in a year	IFA & Demoring	No	0	-do-
4	Khammam	Kalluar	ZPSH Chennar	113	Yes	Yes	once in a year	IFA & Demoring	No	15	-do-
5	Khammam	Kalluar	MPPSPochavaran	31	Yes	Yes	once in a year	IFA & Demoring	No	0	-do-
6	Khammam	Kalluar	MPPS Chinnakarukondhi	64	Yes	Yes	once in a year	IFA & Demoring	No	0	-do-

School Health Programme

Sl.	District	Block	School	Enrolment	Children Health Card available	Health Check-up	Doctor Visit	Distribution of (IFA, Deworming)	Any teacher as ambassador for SHP	How many children identified as anemic	Remarks
7	Khammam	Kalluar	ZPSH Chhakarukondi	122	Yes	Yes	once in a year	IFA & Demoring	No	0	-do-
8	Khammam	Kalluar	ZPSH Nuthankal	67	Yes	Yes	once in a year	IFA & Demoring	No	0	-do-
9	Khammam	Konuerla	MPUPS Salebanjar	40	Yes	Yes	once in a year	IFA & Demoring	No	0	-do-
10	Khammam	Konuerla	MPPS Teegala Banjar	41	Yes	Yes	once in a year	IFA & Demoring	No	0	-do-
11	Khammam	Konuerla	MPPS Pallipadu	36	Yes	Yes	once in a year	IFA & Demoring	No	0	-do-
12	Khammam	Konuerla	ZPHS Pallipadu	66	Yes	Yes	once in a year	IFA & Demoring	No	0	-do-

School Health Programme

Sl.	District	Block	School	Enrolment	Children Health Card available	Health Check-up	Doctor Visit	Distribution of (IFA, Deworming)	Any teacher as ambassador for SHP	How many children identified as anemic	Remarks
13	Khammam	Konuerla	MPHS Kornuerla HW	103	Yes	Yes	once in a year	IFA & Demoring	No	0	-do-
14	Khammam	Konuerla	MPPS Konuerla	86	Yes	Yes	once in a year	IFA & Demoring	No	0	-do-
15	Khammam	Konuerla	ZPHS Konuerla	328	Yes	Yes	once in a year	IFA & Demoring	No	0	-do-
16	Khammam	Enkuru	ZPSH Enkuru	134	Yes	Yes	once in a year	IFA & Demoring	No	0	-do-
17	Khammam	Enkuru	MPPS BN Thanda	29	Yes	Yes	once in a year	IFA & Demoring	No	0	-do-
18	Khammam	Kominepally	ZPHS Komninepally	100	Yes	Yes	once in a year	IFA & Demoring	No	0	-do-

School Health Programme

Sl.	District	Block	School	Enrolment	Children Health Card available	Health Check-up	Doctor Visit	Distribution of (IFA, Deworming)	Any teacher as ambassador for SHP	How many children identified as anemic	Remarks
19	Khammam	Kominepally	ZPSS Koyachalaka	85	Yes	Yes	Monthly	IFA & Demoring	No	0	-do-
20	Khammam	Raghunadapalem	MPPS Davedu	42	Yes	Yes	thrice a year	IFA & Demoring	No	NA	-do-
21	Khammam	Raghunathpalem	MPPS Janbad Thanda	17	Yes	Yes	Monthly	IFA & Demoring	No	0	-do-
22	Khammam	Kominepally	MPPS Kominepally	47	Yes	Yes	Monthly	IFA & Demoring	No	0	-do-
23	Khammam	Kominepally	ZPHS Ponnekal	132	Yes	Yes	Monthly	IFA & Demoring	No	0	-do-
24	Khammam	Bonkal	ZPSS Ravinthula	94	Yes	Yes	Monthly	IFA & Demoring	No	7	-do-

School Health Programme

Sl.	District	Block	School	Enrolment	Children Health Card available	Health Check-up	Doctor Visit	Distribution of (IFA, Deworming)	Any teacher as ambassador for SHP	How many children identified as anemic	Remarks
25	Khammam	Bonkal	MPPS Peddabeeravalli	58	Yes	Yes	Monthly	IFA & Demoring	No	2	-do-
26	Khammam	Bonkal	ZPHS Motamari	46	Yes	Yes	Monthly	IFA & Demoring	No	12	-do-
27	Khammam	Madhira	UPS Vangaveedu	111	Yes	Yes	Monthly	IFA & Demoring	No	20	-do-
28	Khammam	Wyra	ZPSS (Girls) Wyra	168	Yes	Yes	Monthly	IFA & Demoring	No	5	-do-
29	Khammam	Wyra	MPPS Wyra	133	Yes	Yes	Monthly	IFA & Demoring	No	5	-do-
30	Yadadri	Chautoppa I	MPUPS Bangarigadda	360	Yes	Yes	once in a year	IFA & Demoring	No	0	-do-

School Health Programme

Sl.	District	Block	School	Enrolment	Children Health Card available	Health Check-up	Doctor Visit	Distribution of (IFA, Deworming)	Any teacher as ambassador for SHP	How many children identified as anemic	Remarks
31	Yadadri	Chautoppa I	MPPS Thangadpelly	204	Yes	Yes	once in a year	IFA & Demoring	No	0	-do-
32	Yadadri	Chautoppa I	ZPHS Koyyalagudum	213	Yes	Yes	once in a year	IFA & Demoring	No	0	-do-
33	Yadadri	Chautoppa I	MPPS Koyyalagudum	125	Yes	Yes	once in a year	IFA & Demoring	No	0	-do-
34	Yadadri	Chautoppa I	MPPS Lakhiram	264	Yes	Yes	once in a year	IFA & Demoring	No	0	-do-
35	Yadadri	Chautoppa I	Telangana State Model School	294	Yes	Yes	once in a year	IFA & Demoring	No	0	-do-
36	Yadadri	Chautoppa I	MPPS BC Colony	136	Yes	Yes	once in a year	IFA & Demoring	No	0	-do-

School Health Programme

Sl.	District	Block	School	Enrolment	Children Health Card available	Health Check-up	Doctor Visit	Distribution of (IFA, Deworming)	Any teacher as ambassador for SHP	How many children identified as anemic	Remarks
37	Yadadri	Chautoppa I	MPPS Pantangi	133	Yes	Yes	once in a year	IFA & Demoring	No	0	-do-
38	Yadadri	Chautoppa I	ZPHS Panthangi	58	Yes	Yes	once in a year	IFA & Demoring	No	0	-do-
39	Yadadri	Narajanpur	MPPS Surval	64	Yes	Yes	once in a year	IFA & Demoring	No	0	-do-
40	Yadadri	Narajanpur	ZPHS Sarval	75	Yes	Yes	once in a year	IFA & Demoring	No	0	-do-
41	Yadadri	Narajanpur	MPPS Kankanalagudem	14	Yes	Yes	once in a year	IFA & Demoring	No	0	-do-
42	Yadadri	Pochampally	MPPS Dothigudem	47	Yes	Yes	once in a year	IFA & Demoring	No	0	-do-

School Health Programme

Sl.	District	Block	School	Enrolment	Children Health Card available	Health Check-up	Doctor Visit	Distribution of (IFA, Deworming)	Any teacher as ambassador for SHP	How many children identified as anemic	Remarks
43	Yadadri	Pochampally	MPPS Jalalpur	50	Yes	Yes	once in a year	IFA & Demoring	No	0	-do-
44	Yadadri	Pochampally	ZPHS Girls Pochampally	85	Yes	Yes	once in a year	IFA & Demoring	No	0	-do-
45	Yadadri	Pochampally	ZPHS Pochampally	280	Yes	Yes	once in a year	IFA & Demoring	No	0	-do-
46	Yadadri	Bommala RamaRam	PS Machanpally	23	Yes	Yes	once in a year	IFA & Demoring	No	1	-do-
47	Yadadri	Bommala RamaRam	ZPHS Cheekatimamidi	207	Yes	Yes	once in a year	IFA & Demoring	No	0	-do-
48	Yadadri	Bhongir	MPUPS Wadaparthi	68	Yes	Yes	once in a year	IFA & Demoring	No	6	-do-

School Health Programme

Sl.	District	Block	School	Enrolment	Children Health Card available	Health Check-up	Doctor Visit	Distribution of (IFA, Deworming)	Any teacher as ambassador for SHP	How many children identified as anemic	Remarks
49	Yadadri	Thurkapally	TS Model School Thurkapally	291	Yes	Yes	once in a year	IFA & Demoring	No	0	-do-

Annexure- VIII

School Nutrition Garden at school level						
Sl.	District	Block	School	Enrolment	Availability of School Nutrition Garden	Availability of space for development of Kitchen Garden
1	Khammam	Kalluar	MPS Kalluar	155	No	Yes
2	Khammam	Kalluar	Govt. High School Kalluar	183	No	Yes
3	Khammam	Kalluar	MPPS Narayanapuram	73	No	Yes
4	Khammam	Kalluar	ZPSH Chennar	113	No	Yes
5	Khammam	Kalluar	MPPSPochavarani	31	No	Yes
6	Khammam	Kalluar	MPPS Chinnakarukondi	64	No	Yes
7	Khammam	Kalluar	ZPSH Chhakarukondi	122	No	Yes
8	Khammam	Kalluar	ZPSH Nuthankal	67	No	Yes
9	Khammam	Konuerla	MPUPS Salebanjar	40	No	Yes
10	Khammam	Konuerla	MPPS Teegala Banjar	41	No	Yes
11	Khammam	Konuerla	MPPS Pallipadu	36	No	Yes
12	Khammam	Konuerla	ZPHS Pallipadu	66	No	Yes
13	Khammam	Konuerla	MPHS Konuerla HW	103	No	Yes
14	Khammam	Konuerla	MPPS Konuerla	86	No	Yes
15	Khammam	Konuerla	ZPHS Konuerla	328	No	Yes
16	Khammam	Enkuru	ZPSH Enkuru	134	No	Yes
17	Khammam	Enkuru	MPPS BN Thanda	29	No	Yes
18	Khammam	Kominepally	ZPHS Kominepally	100	No	Yes
19	Khammam	Kominepally	ZPSS Koyachalaka	85	yes	Yes
20	Khammam	Raghunadapalem	MPPS Davedu	42	No	Yes
21	Khammam	Raghunathpalem	MPPS Janbad Thanda	17	No	Yes
22	Khammam	Kominepally	MPPS Kominepally	47	No	Yes
23	Khammam	Kominepally	ZPHS Ponnekal	132	Yes	Yes

School Nutrition Garden at school level

Sl.	District	Block	School	Enrolment	Availability of School Nutrition Garden	Availability of space for development of Kitchen Garden
24	Khammam	Bonkal	ZPSS Ravinthula	94	Yes	Yes
25	Khammam	Bonkal	MPPS Peddabeeravalli	58	No	Yes
26	Khammam	Bonkal	ZPHS Motamari	46	yes	Yes
27	Khammam	Madhira	UPS Vangaveedu	111	yes	Yes
28	Khammam	Wyra	ZPSS (Girls) Wyra	168	No	Yes
29	Khammam	Wyra	MPPS Wyra	133	No	Yes
30	Yadadri	Chautoppal	MPUPS Bangarigadda	360	No	Yes
31	Yadadri	Chautoppal	MPPS Thangadpelly	204	No	Yes
32	Yadadri	Chautoppal	ZPHS Koyyalagudum	213	No	Yes
33	Yadadri	Chautoppal	MPPS Koyyalagudum	125	No	Yes
34	Yadadri	Chautoppal	MPPS Lakhiram	264	No	Yes
35	Yadadri	Chautoppal	Telangana State Model School	294	No	Yes
36	Yadadri	Chautoppal	MPPS BC Colony	136	No	Yes
37	Yadadri	Chautoppal	MPPS Pantangi	133	No	Yes
38	Yadadri	Chautoppal	ZPHS Panthangi	58	No	Yes
39	Yadadri	Narajanpur	MPPS Surval	64	No	Yes
40	Yadadri	Narajanpur	ZPHS Sarval	75	No	Yes
41	Yadadri	Narajanpur	MPPS Kankanalagudem	14	No	Yes
42	Yadadri	Pochampally	MPPS Dothigudem	47	No	Yes
43	Yadadri	Pochampally	MPPS Jalalpur	50	No	Yes
44	Yadadri	Pochampally	ZPHS Girls Pochampally	85	No	Yes
45	Yadadri	Pochampally	ZPHS Pochampally	280	No	Yes
46	Yadadri	Bommala RamaRam	PS Machanpally	23	Yes	Yes
47	Yadadri	Bommala RamaRam	ZPHS Cheekatimamidi	207	No	Yes

School Nutrition Garden at school level

Sl.	District	Block	School	Enrolment	Availability of School Nutrition Garden	Availability of space for development of Kitchen Garden
48	Yadadri	Bhongir	MPUPS Wadaparthi	68	Yes	Yes
49	Yadadri	Thurkapally	TS Model School Thurkapally	291	No	Yes

Annexure-IX

Contingency plan at school level							
Sl.	District	Block	School	Enrolment	Availability of contingency plan	Tasting Roster	Before Sering meal tasted by
1	Khammam	Kalluar	MPS Kalluar	155	Yes	Yes	HM/Teacher/ Sometimes Parents/sometimes SMC mengers
2	Khammam	Kalluar	Govt. High School Kalluar	183	Yes	Yes	-do-
3	Khammam	Kalluar	MPPS Narayananpuran	73	Yes	Yes	-do-
4	Khammam	Kalluar	ZPSH Chennar	113	Yes	Yes	-do-
5	Khammam	Kalluar	MPPSPochavarana	31	Yes	Yes	-do-
6	Khammam	Kalluar	MPPS Chinnakarukondhi	64	Yes	Yes	-do-
7	Khammam	Kalluar	ZPSH Chhakarukondi	122	Yes	Yes	-do-
8	Khammam	Kalluar	ZPSH Nuthankal	67	Yes	Yes	-do-
9	Khammam	Konuerla	MPUPS Salebanjar	40	Yes	Yes	-do-
10	Khammam	Konuerla	MPPS Teegala Banjar	41	Yes	Yes	-do-
11	Khammam	Konuerla	MPPS Pallipadu	36	Yes	Yes	-do-
12	Khammam	Konuerla	ZPHS Pallipadu	66	Yes	Yes	-do-
13	Khammam	Konuerla	MPHS Kornuerla HW	103	Yes	Yes	-do-
14	Khammam	Konuerla	MPPS Konuerla	86	Yes	Yes	-do-
15	Khammam	Konuerla	ZPHS Konuerla	328	Yes	Yes	-do-
16	Khammam	Enkuru	ZPSH Enkuru	134	Yes	Yes	-do-
17	Khammam	Enkuru	MPPS BN Thanda	29	Yes	Yes	-do-
18	Khammam	Kominapally	ZPHS Komninpally	100	No	Yes	Yes

Contingency plan at school level

Sl.	District	Block	School	Enrolment	Availability of contingency plan	Tasting Roster	Before Siring meal tasted by
19	Khammam	Kominepally	ZPSS Koyachalaka	85	Yes	Yes	Yes
20	Khammam	Raghunadapalem	MPPS Davedu	42	Yes	Yes	Yes
21	Khammam	Raghunathpalem	MPPS Janbad Thanda	17	Yes	Yes	Yes
22	Khammam	Kominepally	MPPS Kominepally	47	No	Yes	Yes
23	Khammam	Kominepally	ZPHS Ponnekal	132	Yes	Yes	Yes
24	Khammam	Bonkal	ZPSS Ravinthula	94	Yes	Yes	Yes
25	Khammam	Bonkal	MPPS Peddabeeravalli	58	Yes	Yes	Yes
26	Khammam	Bonkal	ZPHS Motamari	46	Yes	Yes	Yes
27	Khammam	Madhira	UPS Vangaveedu	111	Yes	Yes	Yes
28	Khammam	Wyra	ZPSS (Girls) Wyra	168	Yes	Yes	Yes
29	Khammam	Wyra	MPPS Wyra	133	Yes	Yes	Yes
30	Yadadri	Chautoppal	MPUPS Bangarigadda	360	Yes	Yes	-do-
31	Yadadri	Chautoppal	MPPS Thangadpelly	204	Yes	Yes	-do-
32	Yadadri	Chautoppal	ZPHS Koyyalagudum	213	Yes	Yes	-do-
33	Yadadri	Chautoppal	MPPS Koyyalagudum	125	Yes	Yes	-do-
34	Yadadri	Chautoppal	MPPS Lakhiram	264	Yes	Yes	-do-
35	Yadadri	Chautoppal	Telangana State Model School	294	Yes	Yes	-do-
36	Yadadri	Chautoppal	MPPS BC Colony	136	Yes	Yes	-do-
37	Yadadri	Chautoppal	MPPS Pantangi	133	Yes	Yes	-do-
38	Yadadri	Chautoppal	ZPHS Panthangi	58	Yes	Yes	-do-
39	Yadadri	Narajanpur	MPPS Surval	64	Yes	Yes	-do-
40	Yadadri	Narajanpur	ZPHS Sarval	75	Yes	Yes	-do-
41	Yadadri	Narajanpur	MPPS Kankanalagudem	14	Yes	Yes	-do-
42	Yadadri	Pochampally	MPPS Dothigudem	47	Yes	Yes	-do-



Contingency plan at school level

Sl.	District	Block	School	Enrolment	Availability of contingency plan	Tasting Roster	Before Sering meal tasted by
43	Yadadri	Pochampally	MPPS Jalalpur	50	Yes	Yes	-do-
44	Yadadri	Pochampally	ZPHS Girls Pochampally	85	Yes	Yes	-do-
45	Yadadri	Pochampally	ZPHS Pochampally	280	Yes	Yes	-do-
46	Yadadri	Bommal RamaRam	PS Machanpally	23	Yes	Yes	-do-
47	Yadadri	Bommal RamaRam	ZPHS Cheekatimamidi	207	Yes	Yes	-do-
48	Yadadri	Bhongir	MPUPS Wadaparthi	68	Yes	Yes	-do-
49	Yadadri	Thurkapally	TS Model School Thurkapally	291	Yes	Yes	-do-

Annexure-X

Coverage of Children in Rajnandgaon District during 10 days of JRM Visit

Sl.	District	Block	School	Enrolment	1st day of Visit	2nd Day	3rd Day	4th Day	5th Day	6th Day	7th Day	8th Day	9th Day	10th Day	Average
1	Khammam	Kalluar	MPS Kalluar	155	110	131	126	125	131	126	129	130	129	131	127
2	Khammam	Kalluar	Govt. High School Kalluar	183	126	118	123	141	126	126	153	130	130	130	130
3	Khammam	Kalluar	MPPS Narayanapuram	73	67	70	70	69	68	70	69	68	71	69	69
4	Khammam	Kalluar	ZPSH Chennar	113	71	82	92	93	92	85	79	80	94	86	85
5	Khammam	Kalluar	MPPSPochavaran	31	31	30	30	28	31	30	30	30	29	30	30
6	Khammam	Kalluar	MPPS Chinnakarukondhi	64	52	53	53	52	45	45	59	59	58	59	54
7	Khammam	Kalluar	ZPSH Chhakarukondi	122	85	102	97	93	85	85	67	100	97	80	89
8	Khammam	Kalluar	ZPSH Nuthankal	67	67	49	47	53	62	59	56	63	63	51	57
9	Khammam	Konuerla	MPUPS Salebanjar	40	36	30	37	35	34	29	26	30	36	35	33
10	Khammam	Konuerla	MPPS Teegala Banjar	41	34	36	35	38	38	37	38	39	39	35	37
11	Khammam	Konuerla	MPPS Pallipadu	36	30	31	35	36	36	35	35	35	36	36	35
12	Khammam	Konuerla	ZPHS Pallipadu	66	53	52	54	54	52	56	53	55	56	58	54
13	Khammam	Konuerla	MPHS Kornuerla HW	103	92	93	92	92	96	91	94	97	96	94	94
14	Khammam	Konuerla	MPPS Konuerla	86	76	81	78	82	82	81	63	73	82	84	78
15	Khammam	Konuerla	ZPHS Konuerla	328	291	281	292	295	294	278	176	286	265	289	275

Coverage of Children in Rajnandgaon District during 10 days of JRM Visit

Sl.	District	Block	School	Enrolment	1st day of Visit	2nd Day	3rd Day	4th Day	5th Day	6th Day	7th Day	8th Day	9th Day	10th Day	Average
16	Khammam	Enkuru	ZPSH Enkuru	134	92	87	86	102	95	102	88	108	87	86	93
17	Khammam	Enkuru	MPPS BN Thanda	29	29	26	25	23	25	26	25	28	26	24	26
18	Khammam	Kominepally	ZPHS Kominepally	100	72	79	68	75	81	77	71	63	67	73	73
19	Khammam	Kominepally	ZPSS Koyachalaka	85	82	80	80	78	64	72	89	72	72	71	76
20	Khammam	Raghunadapalem	MPPS Davedu	42	34	35	36	37	35	34	34	35	34	33	35
21	Khammam	Raghunathpalem	MPPS Janbad Thanda	17	16	12	12	12	14	11	13	14	11	15	13
22	Khammam	Kominepally	MPPS Kominepally	47	34	36	43	44	43	42	41	40	34	41	40
23	Khammam	Kominepally	ZPHS Ponnekal	132	103	117	118	103	103	103	107	107	107	95	106
24	Khammam	Bonkal	ZPSS Ravinthula	94	76	73	72	69	74	81	80	77	80	73	76
25	Khammam	Bonkal	MPPS Peddabeeravalli	58	47	42	45	49	50	50	51	45	52	55	49
26	Khammam	Bonkal	ZPHS Motamari	46	35	37	33	40	42	37	38	37	43	37	38
27	Khammam	Madhira	UPS Vangaveedu	111	89	92	85	101	96	102	93	88	87	87	92
28	Khammam	Wyra	ZPSS (Girls) Wyra	168	113	131	115	129	113	108	98	146	145	143	124
29	Khammam	Wyra	MPPS Wyra	133	123	122	103	118	121	115	119	123	125	125	119
			Total	2704	2166	2208	2182	2266	2228	2193	2074	2258	2251	2225	2205
			Khammam		80%	82%	81%	84%	82%	81%	77%	84%	83%	82%	82%

Annexure-XI

Coverage of Children during 10 days of JRM Visit : Dhamtari

Sl.	District	Block	School	Enrolment	1st day of Visit	2nd Day	3rd Day	4th Day	5th Day	6th Day	7th Day	8th Day	9th Day	10th Day	Average
1	Yadadri	Chautoppal	MPUPS Bangarigadda	360	258	245	222	194	246	227	276	256	232	269	243
2	Yadadri	Chautoppal	MPPS Thangadpelly	204	182	162	155	172	171	177	169	176	157	173	169
3	Yadadri	Chautoppal	ZPHS Koyyalagudum	213	183	184	160	172	177	153	202	203	151	203	179
4	Yadadri	Chautoppal	MPPS Koyyalagudum	125	93	101	106	104	150	105	106	103	104	104	108
5	Yadadri	Chautoppal	MPPS Lakhiram	264	33	46	53	53	52	44	54	49	43	37	46
6	Yadadri	Chautoppal	Telangana State Model School	294	113	130	226	226	233	223	209	258	246	238	210
7	Yadadri	Chautoppal	MPPS BC Colony	136	61	98	105	110	107	113	102	114	108	105	102
8	Yadadri	Chautoppal	MPPS Pantangi	133	95	108	119	105	115	111	118	115	114	121	112
9	Yadadri	Chautoppal	ZPHS Panthangi	58	42	45	46	38	41	42	42	44	44	37	42
10	Yadadri	Narajanpur	MPPS Surval	64	52	51	56	52	55	52	55	55	53	53	53
11	Yadadri	Narajanpur	ZPHS Sarval	75	65	68	61	60	63	55	58	72	73	65	64
12	Yadadri	Narajanpur	MPPS Kankanalagudem	14	10	12	11	9	10	11	12	13	11	13	11
13	Yadadri	Pochampally	MPPS Dothigudem	47	43	42	44	44	43	41	45	47	45	46	44
14	Yadadri	Pochampally	MPPS Jalalpur	50	37	33	44	38	42	43	42	41	44	46	41
15	Yadadri	Pochampally	ZPHS Girls Pochampally	85	53	52	47	40	42	31	64	62	50	58	50
16	Yadadri	Pochampally	ZPHS Pochampally	280	195	195	132	181	185	188	204	190	161	194	183

Coverage of Children during 10 days of JRM Visit : Dhamtari

Sl.	District	Block	School	Enrolment	1st day of Visit	2nd Day	3rd Day	4th Day	5th Day	6th Day	7th Day	8th Day	9th Day	10th Day	Average
17	Yadadri	Bommal RamaRam	PS Machanpally	23	18	20	20	23	21	21	21	21	23	23	21
18	Yadadri	Bommal RamaRam	ZPHS Cheekatimamidi	207	170	162	151	142	157	139	184	187	132	192	162
19	Yadadri	Bhongir	MPUPS Wadaparthi	68	56	57	64	53	66	68	64	65	66	65	62
20	Yadadri	Thurkapally	TS Model School Thurkapally	291	104	104	101	108	73	100	75	67	89	97	92
				2991	1863	1915	1923	1924	2049	1944	2102	2138	1946	2139	1994
			Yadadri		62%	64%	64%	64%	69%	65%	70%	71%	65%	72%	67%

__oo00oo

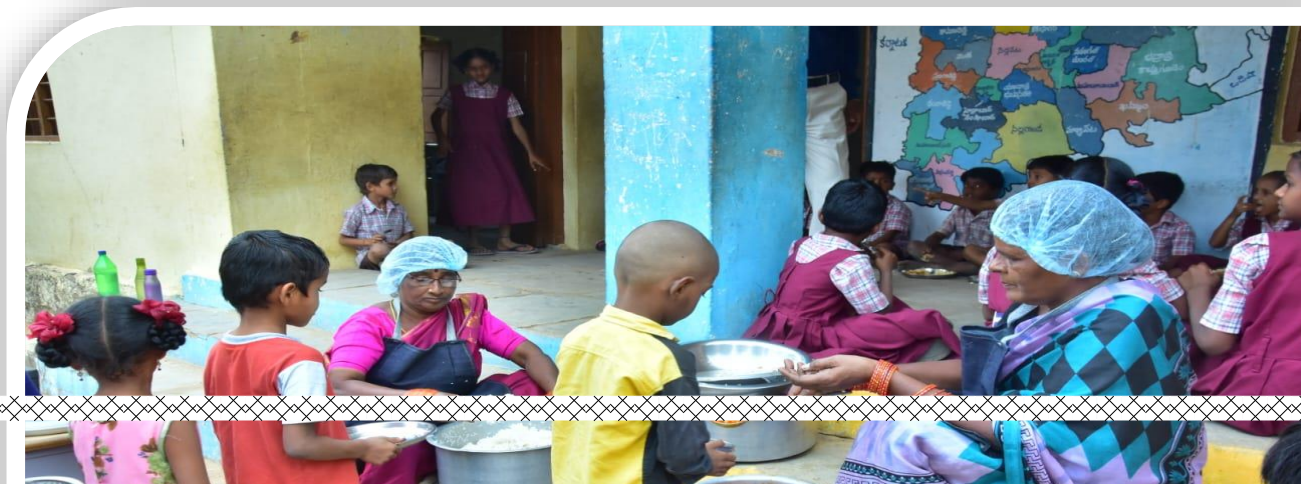


Some glimpses of schools visit

Preparation of meals



Distribution of hot cooked meals





Kitchen-cum-stores



Kitchen-cum-stores





Interaction with Parents



Interactions with stakeholders



Rice bags kept in class room/HM room

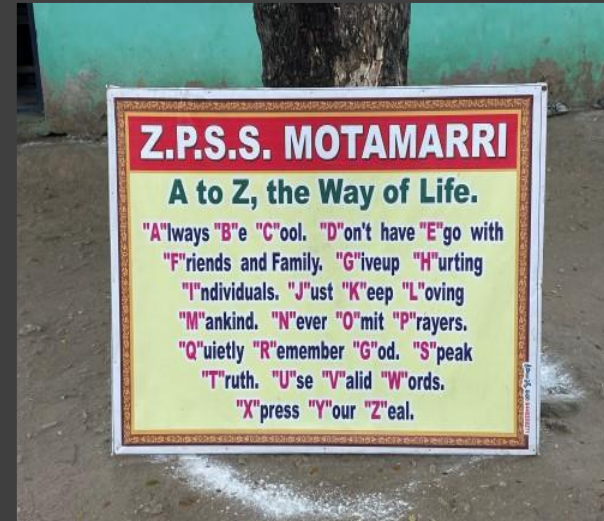


School Nutrition Gardens



Hand washing multi taps





Thank You

