



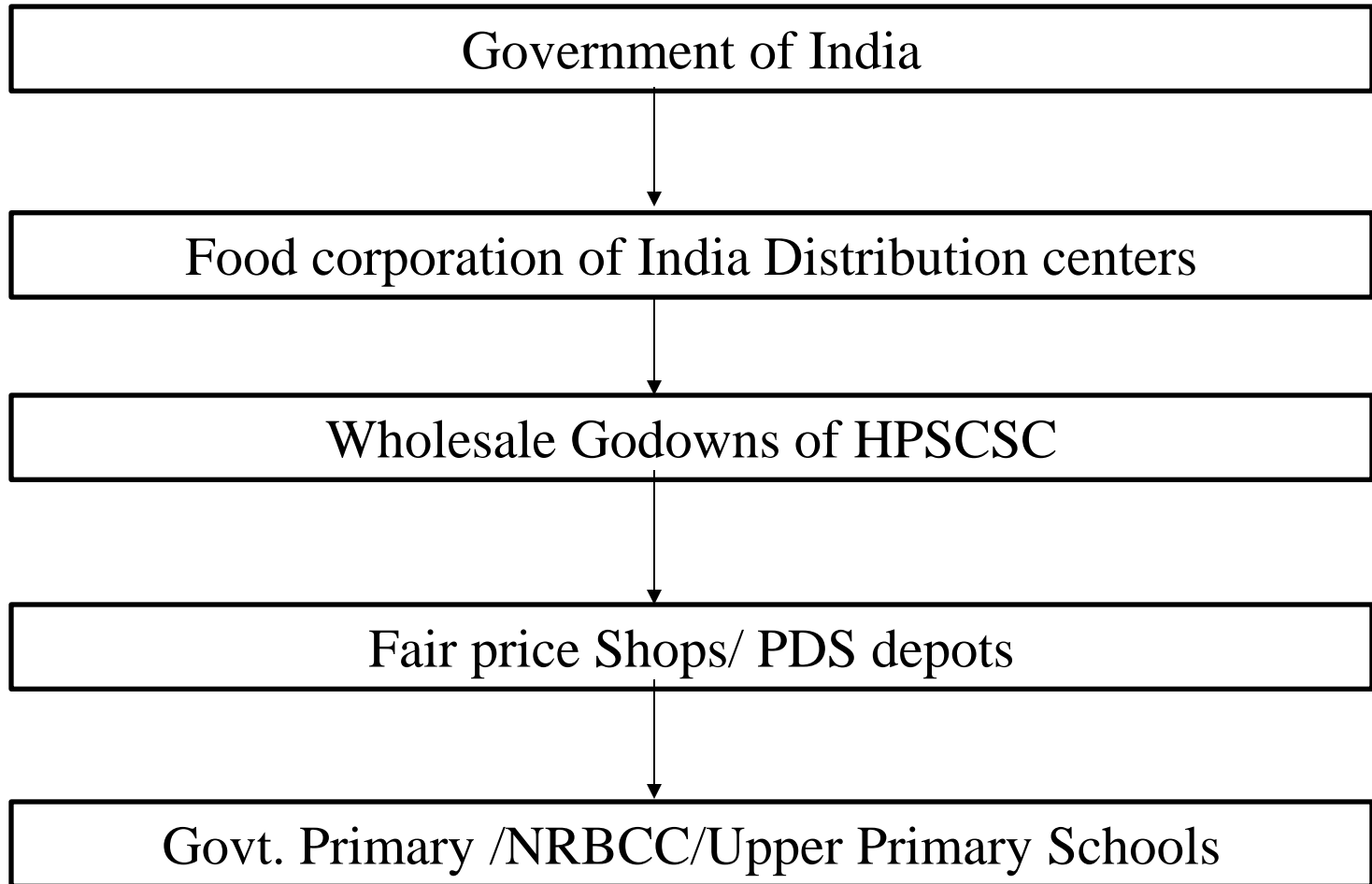
**DEPARTMENT OF ELEMENTARY EDUCATION
HIMACHAL PRADESH**

**REGIONAL WORKSHOP ON MID DAY MEAL
ON 8TH AND 9TH Jan. 2015
AT GOA**

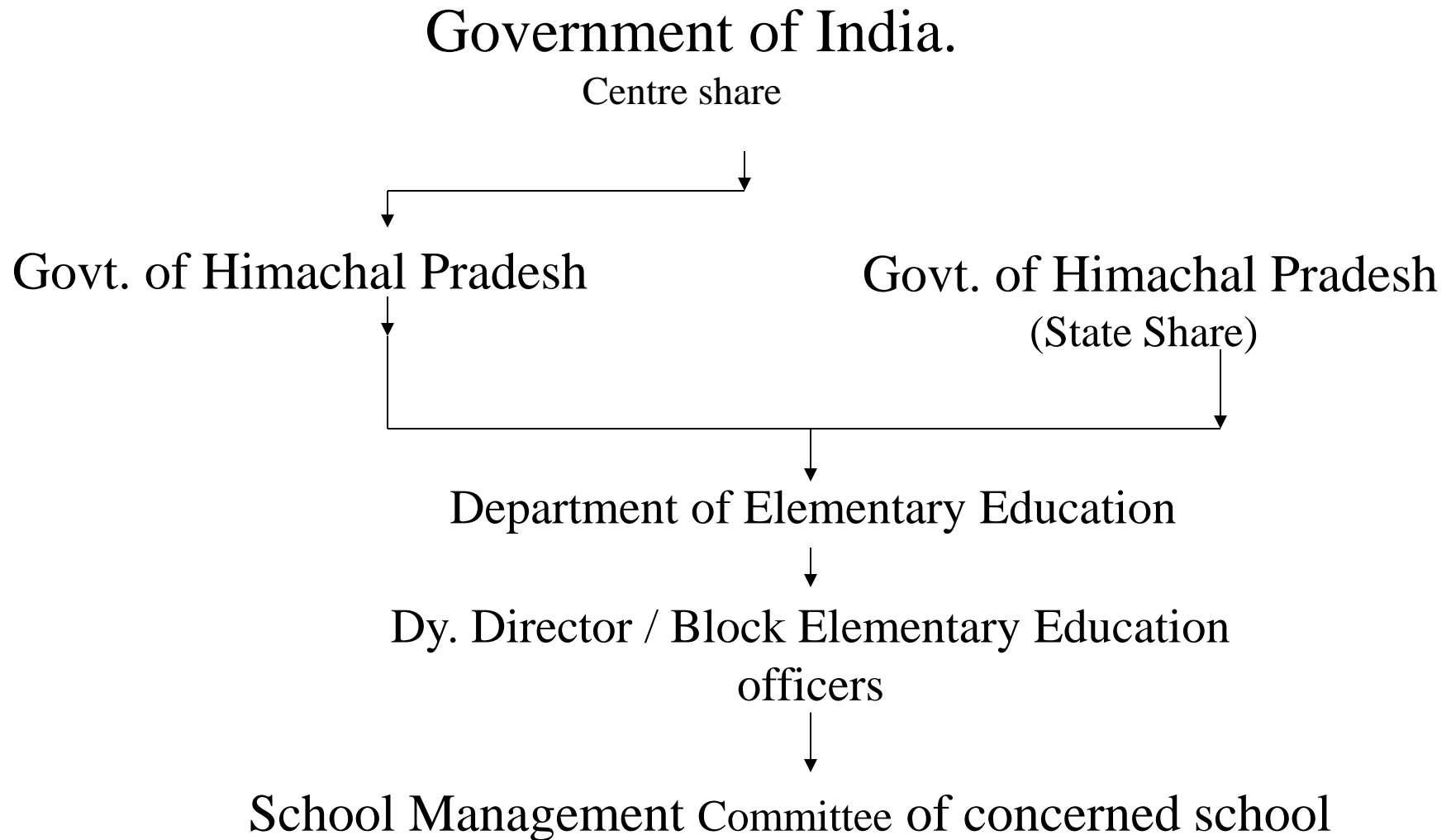
(i) ISSUE:- Review of the Scheme in first two quarters of the year 2014-15

- ❖ The department of Elementary Education is the nodal department for implementation of MID DAY MEAL in the State.
- ❖ HP State Civil Supplies Corporation is the nodal transport agency for transportation of rice in the State.
- ❖ Government of India reimburses transportation charges equivalent to the rates as prevalent under PDS to the State.
- ❖ Hot cooked Meal of high calorific value and protein content, prepared & served in the school premises.
- ❖ The School Management Committees constituted for every school.
- ❖ The School Management Committee has been empowered for overall implementation of the scheme.
- ❖ The School Management Committee has been authorized:
 - To decide the weekly menu.
 - Engagement of cook-cum-helper
 - Overall supervision of the scheme.
- ❖ **Funds amounting to Rs. 6.00 lakhs have been provided for hand washing of the students for 600 schools @Rs 1000/-per School, which has been distributed. This is for the first time that hygiene has been given due importance .**

(i) ISSUE:- Review of the Scheme in first two quarters of the year 2014-15
Food-grain flow chart



(i) ISSUE:- Review of the Scheme in first two quarters of the year 2014-15
FUND FLOW CHART



**(i) ISSUE:- Review of the Scheme in first two quarters of the year 2014-15
Performance of State**



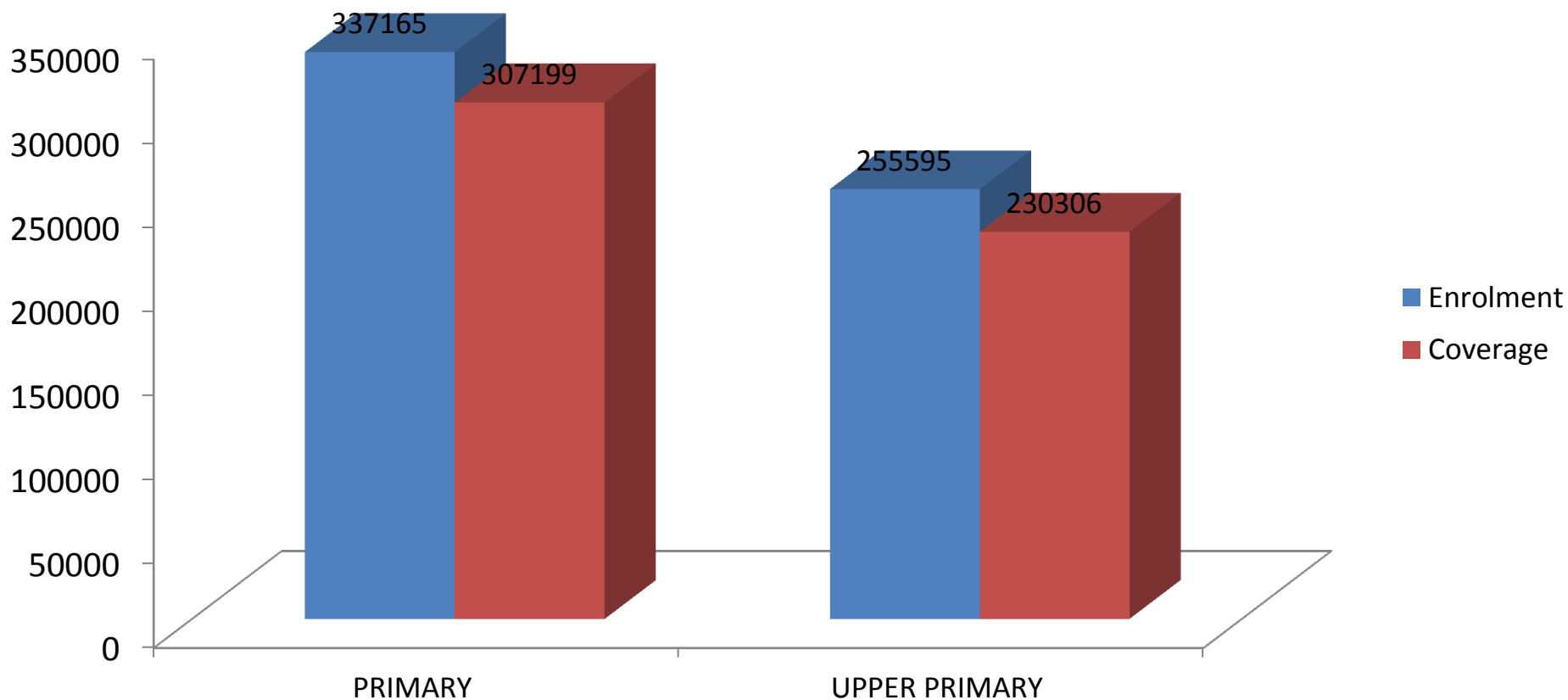
(i) ISSUE:- Review of the Scheme in first two quarters of the year 2014-15
Latest Status of implementation of Mid Day Meal Scheme in H.P.

Detail of Schools

S.NO.	Stages	Number of Institution (As on 30.09.2014)	Total Enrollment (As on 30.09.2014)
1	Primary	10,736	3,37,165
2	Upper Primary	4,618	2,55,595
	Total	15,354	5,92,760

(i) ISSUE:- Review of the Scheme in first two quarters of the year 2014-15
Coverage of children (as on 30-09-2014)

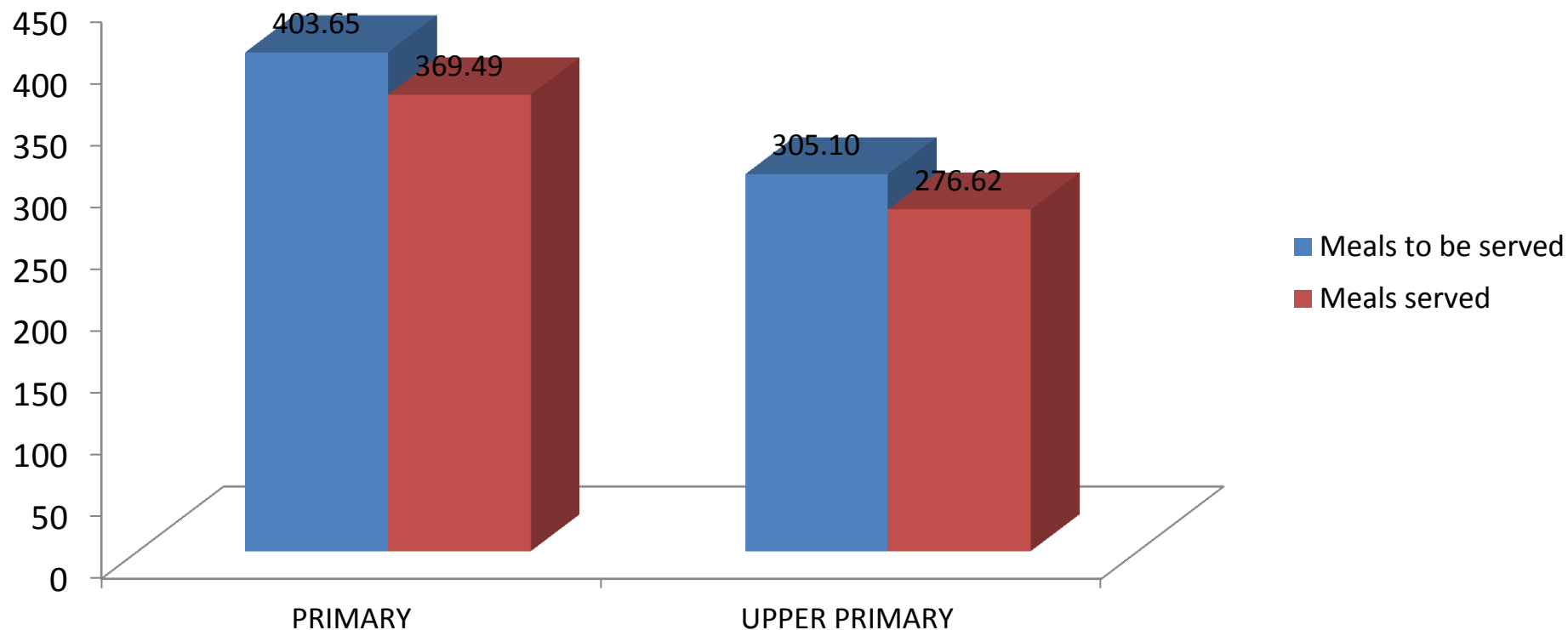
Stages	PAB APPROVAL	Enrolment	Coverage (Average)
PRIMARY	3,47,000	3,37,165	3,07,199 (91%)
UPPER PRIMARY	2,48,000	2,55,595	2,30,306 (90%)
TOTAL:-	5,95,000	5,92,760	5,37,505 (91%)



(i) ISSUE:- Review of the Scheme in first two quarters of the year 2014-15

STATUS OF MEALS (1.04.14 -30.09.14) (fig in lacs)

STAGES	PRIMARY	UPPER PRIMARY
Meals to be served (Enrolment X Nos. of Working Days)	403.65	305.10
Meals served	369.49 (92%)	276.62 (91%)

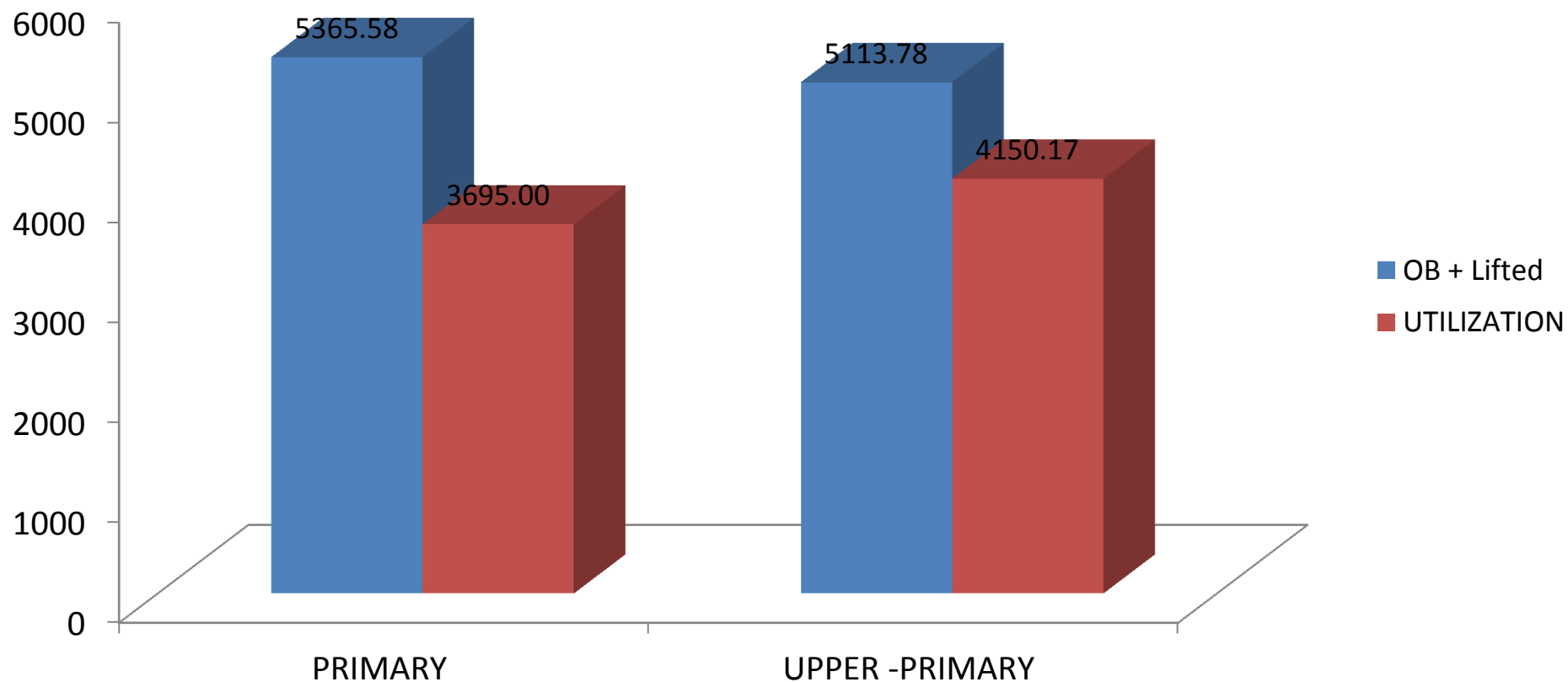


(i) ISSUE:- Review of the Scheme in first two quarters of the year 2014-15

STATUS OF RICE

As on 30-09-2014

STAGES	Opening Balance	Lifted during the Qtr.	OB + Lifted	UTILIZATION
PRIMARY	534.95 MTs	4830.63 MTs	5365.58MTs	3695.00 MTs (69%)
UPPER - PRIMARY	177.14 MTs	4936.64 MTs	5113.78MTs	4150.17 MTs (81%)



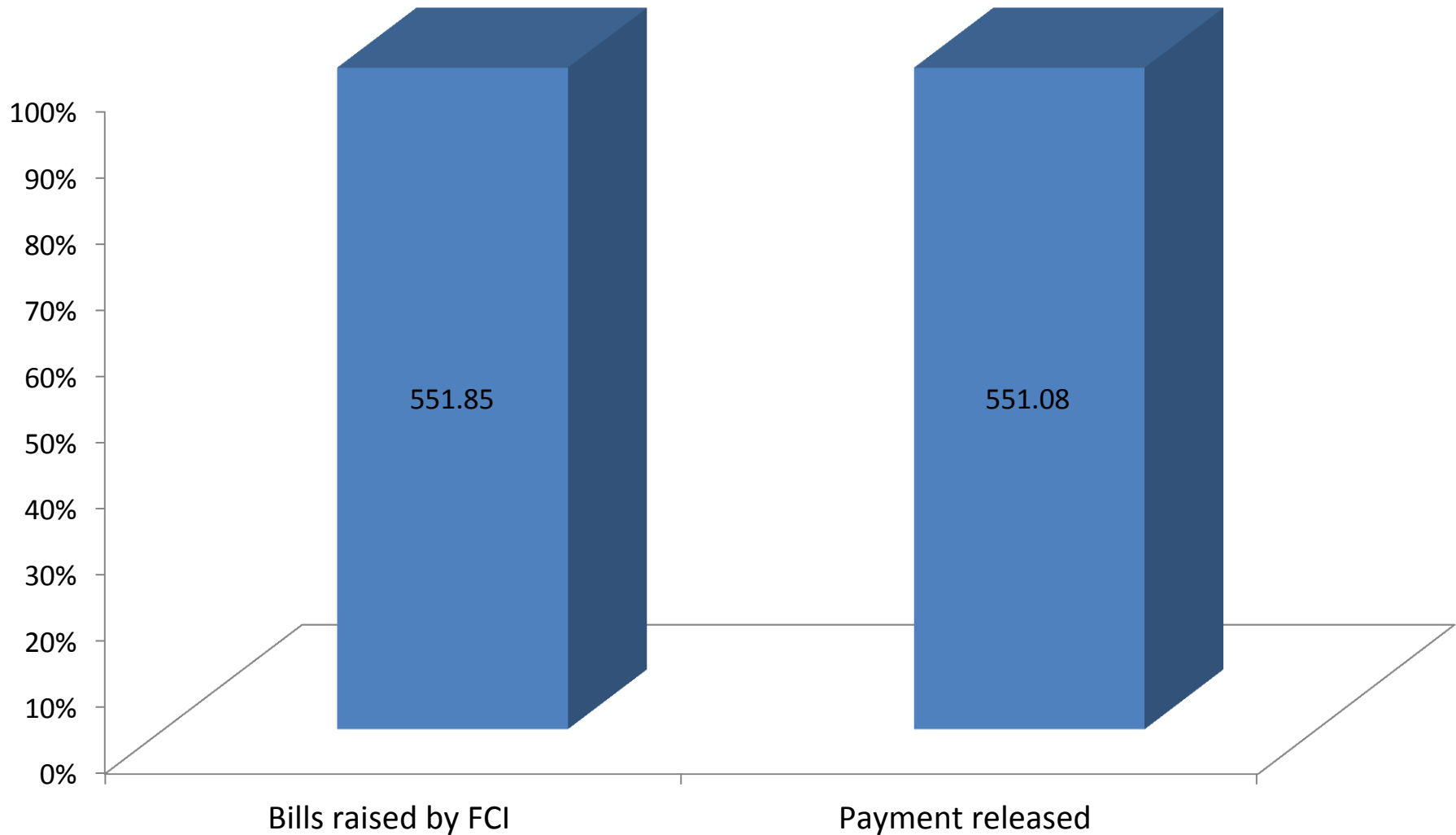
(i) ISSUE:- Review of the Scheme in first two quarters of the year 2014-15**Position of Funds (As on 30.09.2014)****(Rs. in lacs)**

Sl. No.	Particulars	Opening Balance	Released	OB + Released	Utilization	%
1	Cost of Food Grains	11.94	539.14	551.08	551.08	100
2	Cooking Cost					
	Primary	185.05	1634.84	1819.89	1282.20	70
	Upper Primary	294.81	1760.00	2054.81	1421.26	69
3	Honorarium	78.57	1552.01	1630.58	1226.42	75
4	Transportation	10.06	144.05	154.11	144.05	93
5	MME	12.65	68.51	81.16	41.52	51
	Total	593.08	5698.55	6291.63	4666.53	74

(ii) ISSUE :- PAYMENT OF COST OF FOODGRAINS TO FCI

(As on 30-09-2014)

Bills raised by FCI	Payment released
Rs 551.85 lacs (9767.27 MTs)	Rs. 551.08 lacs (9753.62 MTs)

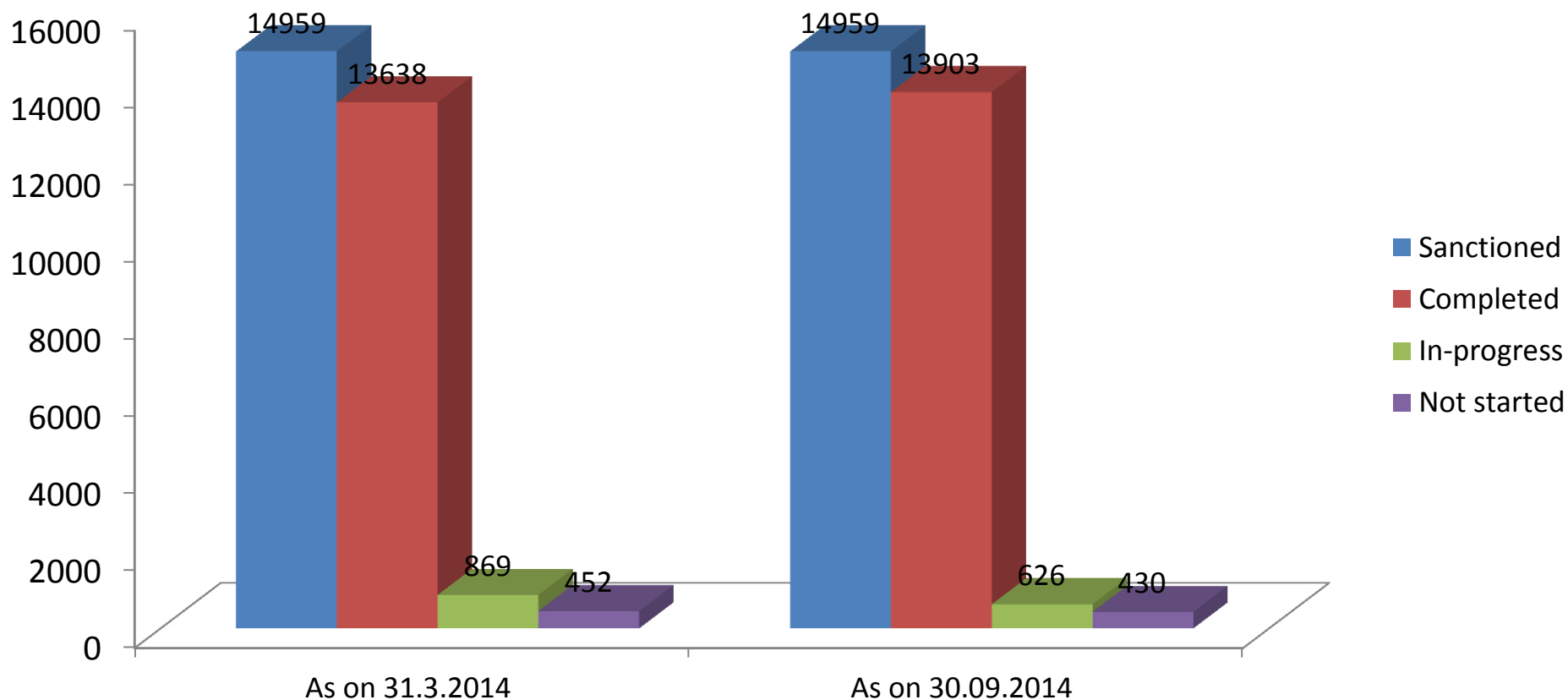


(iii) ISSUE:- Status of School Health Programme

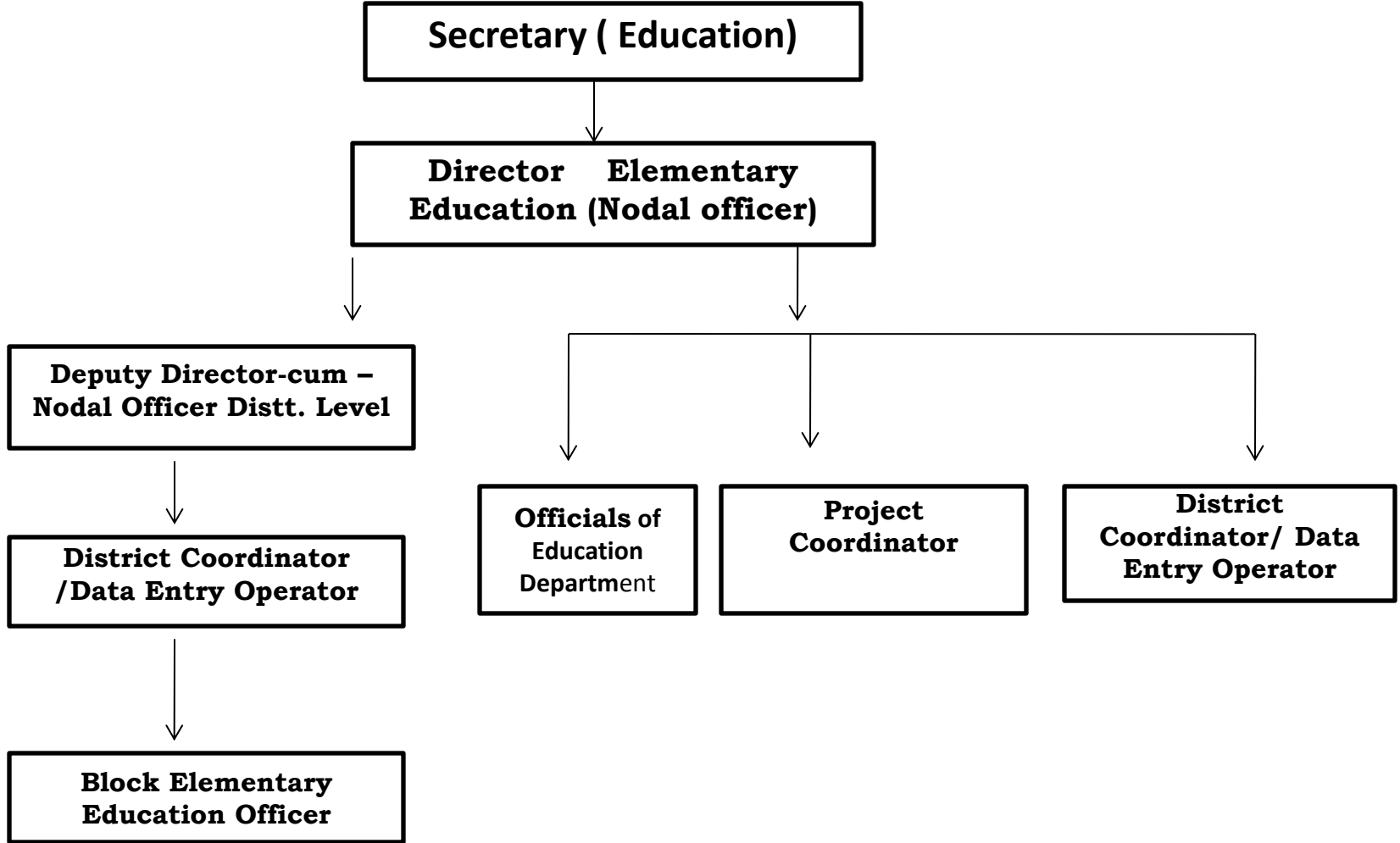
- Regular health checkup of children is being under taken by the Health Department.
- During the first two Quarters of current financial year 2014-15, de-worming tablets have been distributed to 1,24,119 students (classes 1st to 12th) 1393 students have been provided with spectacles.
- Weight and Height measurement is also recorded.

(iv) ISSUE:- Review of infrastructure facilities (Kitchen-shed) (as on 30-09-2014)

Period	Sanctioned	Completed	In-progress	Not started
<i>As on 31.3.2014</i>	14959	13638 (91.17%)	869 (5.81%)	452 (3.02%)
<i>As on 30.09.2014</i>	14959	13903 (93%)	626 (4%)	430 (3%)



(v) ISSUE:- Review of management structure at various level.



(vi) ISSUE:-

Revision of norms of Cooking cost

Primary**Upper Primary**

Year	Centre	State	Total	Centre	State	Total	
2013-14	2.51	0.83	3.34	3.75	1.25	5.00	During 2013-14
2014-15	2.69	0.90	3.59	4.04	1.34	5.38	Implemented w.e.f 1st July, 2014

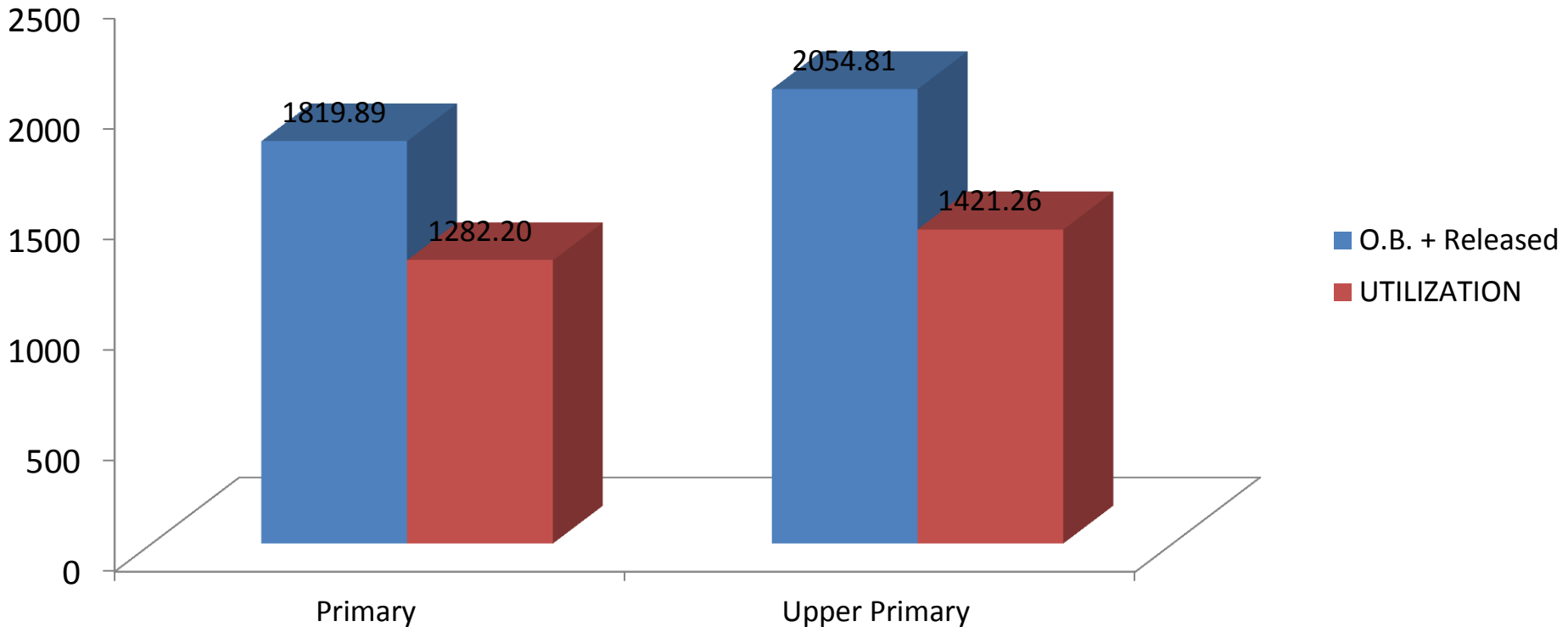
The implementing agencies are facing problem with the existing rate per day per child in providing meals as per prescribed quantity and quality, therefore it is proposed to enhance it further .

contd.....

(vi) ISSUE:-**Review of Cooking cost**

As on 30-09-2014 (Rs. in lacs)

Stages	Opening Balance	Released	O.B. + Released	UTILIZATION
Primary	185.05	1634.84	1819.89	1282.20 (70%)
Upper Primary	294.81	1760.00	2054.81	1421.26 (69%)



(vii) ISSUE:-**Status of Data Entry in to MDM MIS Portal 2014-15
Annual Data Entry**

S. No.	District	Total Schools	Completed
1	BILASPUR	843	843
2	CHAMBA	1607	1607
3	HAMIRPUR	766	766
4	KANGRA	2523	2523
5	KINNAUR	270	270
6	KULLU	1007	1007
7	LAHAUL & SPITI	275	272
8	MANDI	2454	2451
9	SHIMLA	2321	2321
10	SIRMAUR	1416	1415
11	SOLAN	1077	1077
12	UNA	769	769
	Total	15328	15321 (99.9%)

(vii)ISSUE :- Status of Data Entry in to MDM MIS Portal 2014-15

School Monthly Data Entry Report

Sr. No.	District	Total Schools	April	May	June	July	August	September	October	November
1	BILASPUR	843	843	843	843	843	843	843	843	841
2	CHAMBA	1607	1607	1607	1607	1607	1607	1607	1501	1173
3	HAMIRPUR	766	766	766	766	766	766	765	755	745
4	KANGRA	2523	2523	2523	2522	2520	2519	2517	2499	2375
5	KINNAUR	270	270	270	270	270	270	270	270	249
6	KULLU	1007	1007	1007	1007	1007	1007	1007	1007	1007
7	LAHAUL & SPITI	275	272	272	272	272	226	114	111	107
8	MANDI	2454	2448	2448	2448	2438	2397	2376	2118	1775
9	SHIMLA	2321	2298	2298	2296	2296	2295	2295	2295	2288
10	SIRMAUR	1416	1405	1403	1403	1397	1396	1385	1372	1236
11	SOLAN	1077	1075	1075	1075	1075	1075	1075	1035	944
12	UNA	769	769	769	769	769	769	769	769	769
	Total	15328	15283 (99.7%)	15281 (99.69%)	15278 (99.67%)	15260 (99.56%)	15170 (98.96%)	15023 (98.01%)	14575 (95.08%)	13509 (88.13%)

(viii) ISSUE:- Sharing of findings of Monitoring Institutes

<p>Reports / Visit of the Monitoring Institute ; inspection of schools by State / District / Block Level Official; School Management Committee; Community participation</p>	<p>The Monitoring Institution of the state i.e. H.P. University has submitted its report during the year 2012-13.</p> <p>The MI has not conducted any study during 2013-14.</p> <p>In addition to above External evaluation study of MDMS has also been got conducted from the Department of Economics and Statistics for six districts viz Kinnuar , Lahaul & Spiti , Chamba , Sirmour , Kullu and Mandi during 2012-13.</p> <p>❖ Action Taken Report on the findings of the study is as under :</p> <p>The evaluation report revealed that :</p> <ul style="list-style-type: none">✓ Meal is being served regularly .✓ Students are satisfied with the quantity & quality of meal served.✓ Schools have facility of safe drinking water .✓ 92% of schools had separate kitchen shed.✓ 80% of schools have gas connections.✓ Schools are receiving the good quality of dry ration .✓ Majority of parents expressed that their children have gained weight & frequency of falling ill has decreased.✓ Management committees are satisfied with this scheme.
---	--

(viii) ISSUE:- Sharing of findings of Monitoring Institutes

Further , external evaluation report also revealed that:

- ❖ Stakeholders are not involved in menu planning .
- ❖ Most of the stakeholders are not aware about the objectives to be achieved . Public participation is low.
- ❖ Inspections are not being carried out regularly , which revealed weak internal control / monitoring .
- ❖ Delay in releasing the funds to SMCs.

Corrective measures taken:

- ❖ **Regarding menu** : Instructions have been issued to field offices that menu may be got approved from the SMC . The SMC is empowered to approve/decide the weekly menu, keeping in view the food habits / choice of the students.
- ❖ **Awareness among the community members/ parents** : Awareness programme of SMCs is being conducted through SSA under community training module . They are being made aware of the role & responsibilities of SMC and right / entitlements of the students under this scheme. Further, the instructions have been issued for displaying the menu on the wall.
- ❖ **Monitoring / inspection of Scheme** : The department has issued instructions to all officers that every officer going on tour should inspect the MDM scheme in the schools falling en-route . Further, directions have also been issued to the District Coordinator , engaged under (MDM Scheme) , to inspect 10 to 15 school s every month.
- ❖ **Regarding delay in receiving funds:** The funds/ budget is being distributed to the BEEOs through internet , e-vitran , the web based application . This reduces the time lag to large extent . However, Department has also issued instructions to all BEEOs for timely releasing of funds to all SMCs.

(ix) ISSUE:- Preparation of contingency/ medical emergency plan in case of any untoward incident.

- Free Ambulance services are operational in the state. Anyone can avail this facility free of cost by simply dialing a Toll Free NO. 108; irrespective of time, day and place.
- To tackle the law and order situation any one can dial Toll Free No. 100
- And for Fire Department it is 101.
- These numbers should be Painted/ displayed on the wall in the premises of the school for awareness.
- Ensure the installation of Fire extinguishers in the school for the safety of the students. The school building should be kept away from inflammable material.

(x) & (xi) ISSUE:- (x)Social Audit (xi) Testing of food sample by lab

(x)	Social Auditing of the Scheme.	The instructions have been issued regarding conducting of Social Audit of the scheme by including SMC of the school.
(xi)	Testing of food samples by lab	Process of getting testing of meals has been initiated with Health Department and Composite testing laboratory Kandaghat Distt. Solan. H.P.

Critical Issues

- **Enhancement in the honorarium of Cook-cum- helpers from Rs. 1000/- per month as it has not been enhanced since February 2010.**
- **Enhancement in cooking cost per day per child.**
- **Fuel cost be provided separately from cooking cost.**
- **Provision of leave especially leave on Medical grounds & Maternity leave to Cook-cum-Helpers.**
- **Insurance cover for Cook-cum-Helpers under Mid Day Meal Scheme.**
- **Exemption from license registration under Food Security Act.**
- **As MDM scheme is non profitable it may be exempted from license registration Food Security Act. In case the license is to be made, the huge amount of allowance will required -directions thereof.**
- **Interest earned on the central Assistance in banks under the scheme has been accrued at various levels in the field offices and audit objections are being raised in this regard.**
- **De-linking of LPG with Aadhar Card. Schools are facing problems in procuring LPG cylinders due to DBT.**
- **Component wise release:- Some time the amount in one component remains in excess but find it difficult to pay the inevitable payment under the other component administrative department may be given the power and flexibility to decide the component/ category wise release. Flexibility should be given to the state for re-appropriation from one category to another.**

THANKYOU