

Mid Day Meal Scheme
Annual Work Plan and Budget
2017-18

1. Introduction :

1.1 Brief history -

Malnutrition was widely prevalent in India among growing children. Nutritional deficiencies and their incidences among children of school going age group cannot be neglected. Malnutrition not only gives rise to morbidity and mortality, but also prevents a child from developing in a fully functional adult. It adversely affects education in the following ways;

- i) A malnourished child is less likely to attend school regularly.
- ii) Even if such a child does attend school, he/she finds it difficult to concentrate on and participate in teaching-learning activities well enough. He / She therefore, tends to drop out inter alia, because of the inability to cope up with.
- iii) Even if the child does not actually drop out, his attainment levels tend to be low.

Programme of providing Mid-Day Meal in Schools is designed to help UEE in the following ways:

- i) By improving enrolment and regularity of attendance.
- ii) By reducing drop-out and
- iii) By improving children's level of learning and self-esteem.

National Programme of Nutritional Support to Primary Education (commonly known as the Mid-Day Meal Scheme) was launched as a Centrally-Sponsored Scheme on 15th August, 1995. Its objective was to boost Universalisation of Primary Education by increasing enrolment, retention and attendance and simultaneously impacting on nutrition of students in primary classes.

It is being implemented in Maharashtra since 1995-96 onwards. However, the nature of scheme was changed in the right decision of Hon. Supreme Court in Writ Petition No. 196/2001, wherein instead of dry rice the cooked meal was to be given to children on all school days. In 2002, the scheme was implemented in 15 tribal districts of Maharashtra; however, the scope of implementation was extended to all districts of

Maharashtra in January,2003. The scheme implemented for children in Std I to V in Government schools, schools run by local bodies, Government aided private schools and students enrolled in Education Guarantee Scheme Centre i.e. Vastishalas and Alternative and innovative Education Centre i.e. Mahatma Phule Education Guarantee Scheme Centers.

As per Government of India Guidelines, Mid-day Meal Scheme is extended by Govt. of Maharashtra to cover children in upper primary (VI-VIII) classes in 43 educationally backward blocks in 10 districts of Maharashtra State from 1st January 2008.

Now this scheme is being implemented all over Maharashtra state from September, 08 and onwards.

1.2 Management Structure

Management Structure for implementation of the Mid Day Meal Scheme at State, District, Block and School level is as follows :

1. Management Structure At State Level

Hon'ble Education Minister



Hon'ble State Education Minister

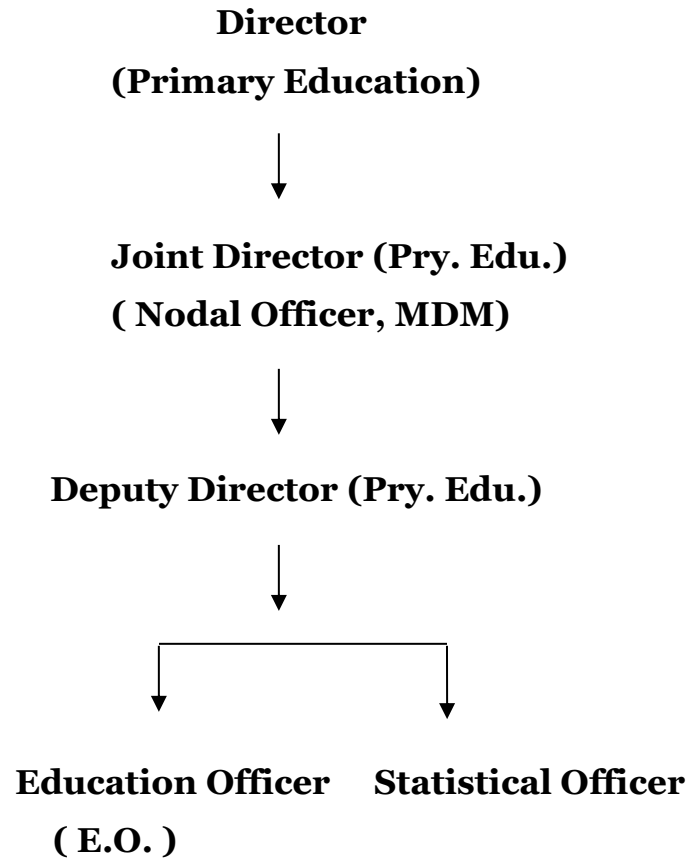


**Hon'ble Additional Chief Secretary
(School Education & Sports Dept)**

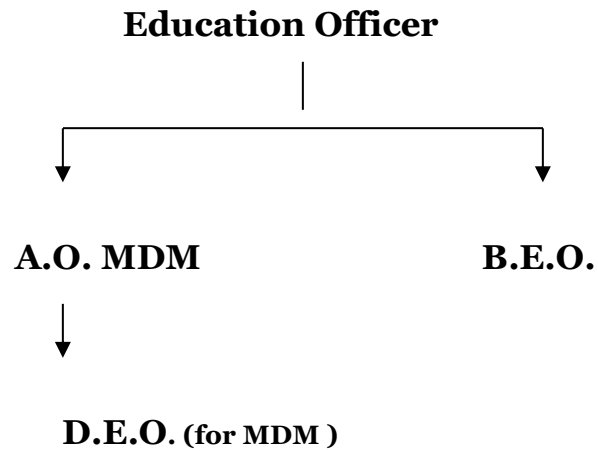


**Hon'ble Commissioner
(Education Dept)**

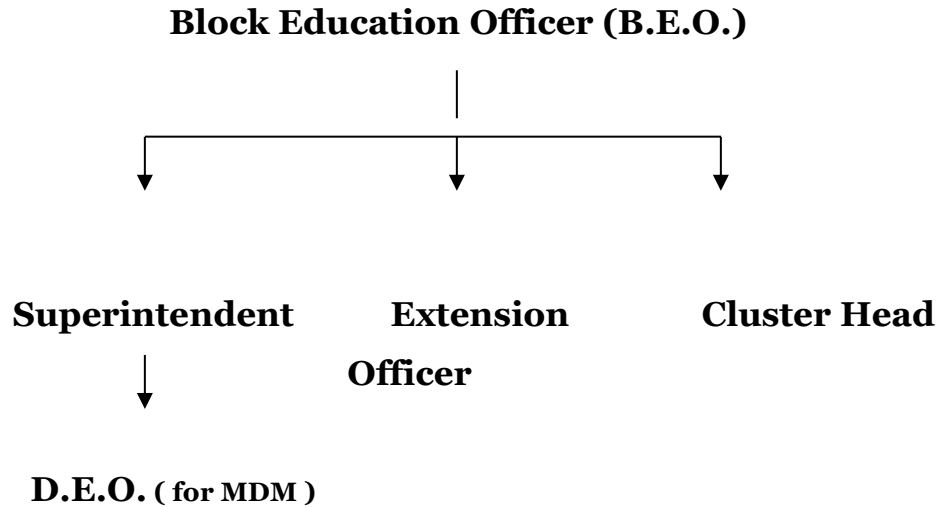




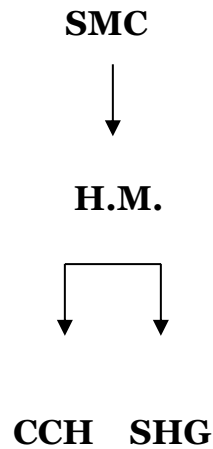
2. Management Structure At District Level (for MDM)



3. Management Structure At Block Level (for MDM)



4. Management Structure At School Level



At school level, mother volunteers, school management committee members and inspecting staff of Education department are made responsible for supervision and monitoring of MDM.

1.3 Process of Plan Formulation;

At District level Education Officer is a Nodal Officer for MDMs and Block Education Officer and Superintendent is a co-ordinating Officer at Block level. Our officials attended National Level regional workshop for preparation of AWP & Budget 2017-18 on 18th Jan 2017 at New Delhi. Directorate of primary Education arranged workshop regarding Annual Work Plan and Budget 2017-18 on 19th & 20th January 2017 for District coordinating Officers. After that State level workshop District level officials arranged District level workshop on 21th to 22th January 2017. Block Coordinator officers arranged workshop for Block level officials on 23th to 24nd January 2017. Superintendents (M.D.M.) collected necessary information from Cluster Heads (Kendrapramukh), cluster head collected information from Schools for Annual Work Plan and Budget 2017-18 and district level officers prepared district plan and submitted district level plans to state on 27th to 30th January 2017.

2. Description and assessment of the programme implemented in the current year (2016-17) and proposal for next year (2017-18) with reference to:

2.1 Regularity and wholesomeness of Mid day meal served to Children; reasons for programme interruptions, if any and planning to minimize them

In Every School Mid-Day meal (100 gms of rice for Std I to V & 150gms of rice for Std VI to VIII) is being given regularly to eligible school children, but there are some interruptions in mid-day meals due to delay in supplying rice and condiments by supplying agencies and in some case due to absence of cook cum helper . Instructions for keeping Buffer stock are given to District officials. In exceptional cases open market purchase permission will be given to such schools are given by district officials.

2.2 Details about weekly Menus.

2.2.1 Weekly Menu –Daywise

Turdal, Mugdal, Masurdal, Watana, Mug, Matki, Chawali, Chana etc. pulses are supplied to schools for preparing meal. C.E.O. of ZillaParishad decided weekly menu with considering local requirement.

Menu Chart -

1. MugdalKhichadi
2. MasurdalKhichadi
3. Varan/Aamti/Sambar
4. VatanaUsal
5. Mug Usal
6. MatkiUsal
7. ChawaliUsal
8. ChanaUsal



2.2.2 Additional Food items provided (fruits / milk / any other items)

Supplementary food items are provided once in a week like groundnuts chikki, Rajgiraladu, dates, Eggs, almonds and fruits etc.

On 09 th Oct 2016 World Eggs Day celebrated in Maharashtra State with the co-operation Of Animal Husbandry Dept. Govt. of Maharashtra. On this day one boiled egg given to students.





2.2.3 Usage of double fortified salt

In Maharashtra state Iodized Salts used for preparing Meal.

2.2.4 At what level menu is being decided / fixed

At district level CEO of Zillah parishad decides the menu considering local test

2.2.5 Provision of local variation in the menu

In Maharashtra State district wise weekly menu is decided considering local test

2.2.6 Timing for serving of Mid day meal at school level -

Mid day meal is served during lunch break – during 9.30 a.m. to 10.00 am in morning schools and 1.40 pm to 2.15 pm in 2nd shift schools

2.3 Food grains management

2.3.1 Timeframe for lifting, District wise lifting calendar of food grains

Rice is lifted from FCI by the designated agency appointed through tendering process. 2 months advance rice is lifted from FCI at one time as per demand from schools.

Lifting calendar is March (April and May), May (June and July), July (August and September), September (October and November), November (December and January), January (February and March). Lifting calendar to all Education Officers and instructions are given to keep the buffer stock of 20 days.

2.3.2 System for ensuring lifting of FAQ food grains (joint inspections at the time lifting etc.)

At the time of lifting rice from FCI go-down, district representative, supplier and FCI Quality control department tested the samples and after verification of samples rice is lifted from FCI go-down. Lifting calendar is given to all the Education Officer and instructions is already given to keep the buffer stock for at least 20 days.

2.3.3 Transportation and distribution

Rice is lifted and transported from centrally appointed supplier and distributed at doorstep of schools, and other condiments are purchased and is provided to schools by the same agency. Register is maintained at the school level showing details about the quantity of rice received and consumed every day.

The storage of food grains is made at schools only. If there is delay in supply by the appointed agency, in this period schools can purchase rice and other condiments on their own expenditure from open market and they are paid for that.

2.3.4 Whether unspent balance of food grains with the schools is adjusted from the allocation of the respective schools.

Rice is lifted from FCI by the agency appointed through tendering process and other condiments are also provided to schools by the same agency. Register is maintained at the school level showing details about the quantity of rice received and used every day for placing next order, balance stock is considered.

2.3.5 Number of schools receiving food grains at door steps of schools

All schools received rice at their door steps.

2.3.6 Storage facility at different levels

The storage of food grains is made at school level but in some schools sufficient space is not available at schools. It is also needed to provide storage containers / bins to schools.

2.3.7 Challenges faced and plan to overcome them

In some schools food grains are stored in kitchen sheds but many kitchen sheds are need to repair. It is also required to provide storage bins at schools.

2.4 Payment of cost of food grains to FCI

2.4.1 System for payment of cost of food grains to FCI

As per food grains lifted from FCI, bills are submitted at state level from FCI. After scrutiny payment is made to FCI from Directorate level.

2.4.2 Status of pending bills of FCI of the previous year

All the bills of previous year paid to FCI

2.4.3 Status of monthly meetings by the State Nodal Officer with the FCI

Two meeting conducted with FCI Officials in the current year.

2.4.4 The process of reconciliation of payment with the concerned offices to FCI

Payment of FCI is made from State level so there is no need of reconciliation.

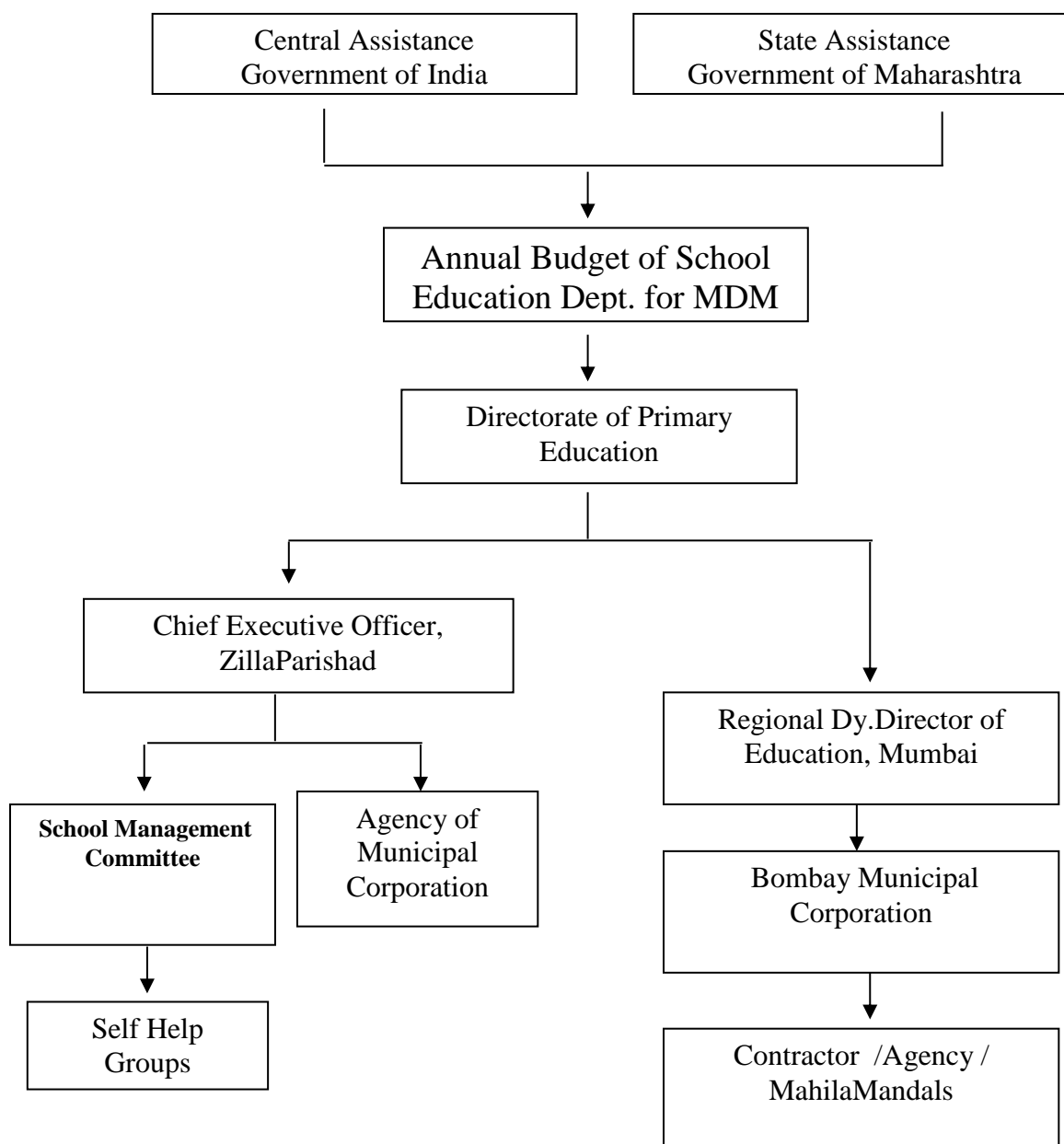
2.4.5 Relevant issues regarding payment to FCI

There are no relevant issue regarding payment to FCI.

2.5 Fund Flow Mechanism – System for release of funds (Central and State)

2.5.1 Mode of release of funds at different levels (e-transfer of funds directly from State to School / implementing agency)

Flow of funds



2.5.2 Dates when the fund released to state Authority / Directorate / District / Block / Gram Panchayat and finally to the cooking Agency / School

Dates of receiving of funds from State level 25/05/2016, 01/09/2016

Dates of releasing of funds to district level 24/06/2016, 18/10/2016

2.5.3 Reasons for delay in release of funds at different levels

Delay in release of funds occurs due to implementation of direct transfer of fund from district to school school

2.6 Cook-cum-helpers

2.6.1 System and mode of payment of honorarium to cook-cum-helpers and implementing agencies

As per the Flow of funds shown in 2.5.1

2.6.2 Rate of honorarium to cook-cum-helpers

cook-cum-helpers as per eligibility of norms is as follows.

For Rural Area

Sr.no	Enrollment 1 to 8	Grant approved per month
1	Upto 25 students	Rs.1000/-
2	26 to 199 students	Rs.2000/-
3	200 to 299 students	Rs.3000/-
4	300 to 399 students	Rs.4000/-
5	400 to 499 students	Rs.5000/-
6	500 to 599 students	Rs.6000/-
7	600 to 699 students	Rs.7000/-
8	700 to 799 students	Rs.8000/-
9	800 to 899 students	Rs.9000/-
10	900 and more	Rs.10000/-

For Urban Area

Sr.no	Enrollment 1 to 8	Grant approved per month
1	500 students	Rs.2000/-
2	1000 students	Rs.4000/-
3	5000 students	Rs.6000/-
4	10000 students	Rs.8000/-
5	10000 and more students	Rs.10000/-

Total no of approved Cook cum helpers –174000

Total no of engaged cook cum helpers – 166113

2.6.3 & 2.6.4 Number of cook-cum-helpers having bank accounts & payment of honorarium to cook-cum-helpers through their bank accounts

In 10 districts payment is made through cheque .
25 districts are make payment directly on CCH accounts from District. Instructions are given to all Education Officers to make payment to cook cum helpers directly on their accounts.

2.6.5 This section should also include the details of cook-cum-helpers like eligibility as per norms, approval of cook-cum-helpers, engaged and the strategy to Fill the Gap (if any)

Cook Cum Helper are appointed by SMC and preference is given to needy, divorced and socially backward class women.

2.6.6. Provisions for health check-ups of cook cum helpers

Health check-ups of Cook cum Helper is carried out at District Rural Hospitals or PHC

2.6.7. Whether Cook cum Helpers are Wearing Head gears and gloves at the time of Meals

In some schools Head gears and gloves are used by the cook cum helpers. Instructions are given to the district officer to make it compulsory at all schools.

2.6.8. Modalities for appointment of cook cum helpers engaged at school level end working at Centralized Kitchens, in case schools being served through Centralized Kitchen

Cook cum helpers are appointed as per no of Students in the schools. Cook cum helpers honorarium is not given to central kitchen.

2.7 Procurement and storage of cooking ingredients and condiments

The ingredients like pulses salt, condiments, oil and fuel etc. are purchased by agencies and supplied to schools. Now (The state Government has taken policy decision and decided to call expression of interest from NGO's for supply of cooked meal in the urban area, it is in process.)In rural area separate agency is appointed by way of open tendering process for transportation of rice and supply of other ingredients to Schools and in urban area pluses condiments are procured by cooking agencies appointed by SMC.

Food grains are stored in school premises in storage bins are provide for storage some school as per the availability of funds.

2.8 System for cooking, severing and supervising Mid Day Meals in the school and measures to prevent any untoward happening.

2.9 Mode of Cooking of Mid Day Meals – LPG, smokeless chulha, firewood and others.

Total No. of I Institutions	Mode of cookng (No. of Schools)			
	LPG	Solar cooker	Fire wood	Others
86439	31546	1	52551	273

2.10 Kitchen Cum Stores.

Cooking Agencies for e.g. Mahila Self-help groups, Needy Women or N.O.G.s are engaged for cooking & serving of MDM. Members of School Management committee supervise the quality of food.

In Mid Day Meal Scheme at school level, implementing agency is School Management Committee for local bodies' school and for private aided schools. This committee decides cooking agency for mid Day Meal. According to rules and regulations

given by the Government the cooking agency is responsible for cooking, serving and cleaning. While School Management Committee, Headmasters, Kendra pramukh, Extension Officers, Block Education Officer and Superintendent (M.D.M.) are responsible for supervision.

To avoid any untoward incident districts have been instructed to keep fire extinguishers and sand buckets in schools. Also the cooking agencies appointed by SMC should take precautions about cleanliness and health check up of cook cum helpers should be done. SMC members & teachers should first take the taste of the meal before half an hour & then the meal should be served to students. Also continuous and random checking and supervision by the field officers should be done to prevent any untoward happening. Instructions about keeping numbers of PHC near by. Ambulance & Fire brigade services etc and displaying them on the prominent place in bold letters. Instructions are given to take care, about keeping First-Aid Boxes.

2.10.1 Procedure and status of construction of kitchen cum Store

Responsibility of construction of kitchen sheds sanctioned during 2005-06, 2006-07, 2009-10, 2010-11 is of SMC and it is Monitored by MPSP and Funds released under the Mid-day meal programme- Central Government released Rs.22828.80 lakhs in October, 08 for construction of kitchen sheds. The work of constructions of kitchen shed was assigned to Maharashtra PrathmikShikshanParishad (MPSP) a statutory body and total amount was handed over to them. The tenders were called but due to low response from the bidder, the tender is cancelled and new tendering process is completed and work of construction of kitchen shed was assigned to Sintex Industries Ltd. in March 2012. Work is in progress. 6000 Kitchen cum stores are sanctioned for Private aided schools.

2.10.2 The reasons for slow pace construction of kitchen cum stores, if applicable .

2.10.3 Whether any standardized model of kitchen cum store is used for construction.

Kitchen cum store sanction during 2005-06, 2006-07, 2009-10, 2010-11 is of RCC type and Sanction during 2008-09 is of prefabricated type.

2.10.4 Details of the construction agency and role of community in this work

Responsibility of getting work done RCC type kitchen shed is of SMC and for prefabricated kitchen shed work assign to Sintex Industries Ltd. appointed through open tender



2.10.5 Kitchen cum store constructed through convergence, if any

2.10.6 Progress of construction of kitchen cum store during this year and target for the next year.

Progress of construction of Kitchen-cum-stores

Sr.no	Year of sanctioned	No of work sanctioned	completed	In progress	Yet to Start	surrendered
1	2006-07	18417	17825	0	58	0
2	2007-08	87	43	0	0	0
3	2008-09	38048	32355	0	0	0
4	2009-10	1355	1277	0	0	0
5	2010-2011	7876	5608	47	287	0
6	2011-2012	0	0	0	0	0
7	2012-2013	0	0	0	0	0
8	2013-2014	6000	723	1211	4066	0
9	2015-2016	0	0	0	0	0
10	2016-2017	0	0	0	0	5693
	Total	71783	57831	1258	4411	5693

- 8283 kitchen shed constructed through convergence

Note 1 :- Kitchen-cum-stores sanctioned during 2008-09 are of pre-fabricated type.

2 :- Kitchen-cum-stores sanctioned during 2013-14 are for the private aided schools.

Out of 38048 prefabricated kitchen shed 5693 kitchen sheds surrendered to central government.

2.11 Kitchen Devices

2.11.1 Procedure of procurement of kitchen devices from funds released under the Mid Day Meal Programme

From the funds released under kitchen devices items are procured centers at state level and distributed to schools

(i) Funds released under the Mid-day meal programme -

Central assistance received towards procurement of kitchen devices is as follows:

- a) In 2012-2013 – Rs. 2122.50 lakhs. (Plates)
- b) In 2013-2014 – Rs. 3223.00 lakhs. (Plates)
- c) In 2014-2015 – Rs. 1579.50 lakhs. (Plates)



Steel plates have been distributed from the funds received.

2.11.2 Procedure of procurement of Kitchen devices from funds released under the other sources

Other sources - During 2011-12, 751500 steel plates and 170068 glasses are procured from 4% Contingency funds.

2.11.3 Availability of eating plates, Source of funding of eating plates

Eating plates are procured from funds sanctioned for kitchen devices.



2.12 Capacity building and training for different stake holders

2.12.1 Details of the training programme conducted for cook-cum-helpers, State level officials, SMC Members, school teachers and others stake holders

About taking precautions while cooking and serving also how to cook nutritious food; training should be given with the help of Home Science Department.

2.12.2 Details about Modules used for training, Master Trainers, Venues etc.

2.12.3 Targets for the next year

2.13 Management information system at School, Block, District and State level and its details

2.13.1 Procedure followed for data entry into MDM-MIS Web portal

For MDM-MIS, the state has developed daily monitoring system with the help of NIC by which every MDM school submit their daily attendance and no of meals served on MDM Portal through SMS, web portal and Mobile app.

Using this portal, the officials from block level to state level can be monitored daily data submission by schools .

2.13.2 Level (State / District / Block / school) at which data entry is made

At block level data entry made by Data Entry Operators.

2.13.3 Availability of manpower for web based MIS

One Data Entry Operator has been appointed at each block for MIS.

2.13.4 Mechanism for ensuring timely data entry and quality of data

For ensuring timely data entry and quality of data the state has developed online MDM portal. The cluster head, block admin, district admin and state admin has been reviewed time to time about data entry and quality of data.

2.13.5 Whether MIS data is being used for monitoring purpose and details thereof

Yes, this MIS data is used for calculating the performance of districts, and various educational institutes use this data for social audit purpose and etc.

2.14 System to ensure transparency, accountability and openness in all aspects of programme implementation.

- Social audit, flying squads of state and district officials done surprise visit to school for checking the implementation of MDM. MDM web portal is available to all people to view the daily status as well as progress of this scheme and they can lodged their complaints through this portal. Also SMC chairman can use mdm mobile app to betterment of implementation of scheme.

2.14.1 Display of logo, entitlement of children and other information at a prominent visible place in school

Flex boards regarding MDM displayed in every school at visible place. Displayed of logo on kitchen shed.



2.14.2 Dissemination of information through MDM website

School Education Department website disseminated the information of MDM.

The screenshot shows the official website for the Mid Day Meal Scheme in Maharashtra. The header includes the logo and navigation options in Marathi. A central banner features a photograph of school children and staff. Below this, four data boxes provide key statistics: 86514 schools, 9344 schools with information, 9292 meals served in schools, and 52 meals not served in schools. A section below lists various mobile applications and user manuals available for download.

2.14.3 Provisions for community monitoring at school level i.e. mother Roaster, Inspection register.

SMC, Mata Palak Sangh regular meetings were organized at school regarding this purpose. Taste register is maintained at school level.

2.14.4 Tasting of Meals by community members.

Every day School Management Committee members or community members tasted meals at each school.

2.14.5 Conducting social Audit

- i) Superintendent (Mid-day Meal Scheme) is appointed at block level & Municipal corporation level to Supervise the MDM Programme
- ii) Regular weekly menu is displayed on notice board.
- iii) Regular meeting of Mid –Day Meal is taken by the SMC at school level.

- iv) Woman parents are involved for supervision of cooked meal, also supervise whether pulses & vegetables are adequate.
- v) Stock & expenditure register is maintained by school and open for inspection
- vi) Taste register is provided to every school and regularly entries are taken by SMC members, parents and teachers.
- vii) Flex having MDM logo and information about weekly menu. Per day per child entitlement are distributed to all schools.

2.15 Measures taken to rectify

2.15.1 Inter-district low and uneven utilization of food grains and cooking cost

2.15.2 Intra – district mis match in utilization of food grains and cooking cost

2.15.3 Delay in delivering cooking cost at school level.

2.15.4 Delay in payment to FCI

Payment has been made to FCI as per their bills.

2.15.5 Mis Match of data reported through various sources (QPR,AWP & B,MIS etc.)

- a) Inter-District low and uneven utilization of food grains and cooking cost.
- b) Intra-District mismatch in utilization of food grains and cooking cost.

Actually at inter-District or intra District there is no low and uneven utilization of food grains and cooking cost. In the state, uneven or low utilization was noticed due to incorrect information collected from school level & block level.

C) Delay in delivering cooking cost at school level.

Grants received from central Government are converted into Grant-in-aid of state, and then released to Directorate. There after to CEO of Zillha Parishad. It requires time to withdraw this amount from district treasury and transfer it to Block level & then distribute it at concerned school management committee. Hence, there was delay in delivering cooking cost. To reduce delay in delivering cooking cost and for timely distribution of Mid Day Meal scheme grant to schools, State government give instructions to all EO's , to transfer the grants directly from district to schools.

2.16 Details of evaluation studies conducted by States / UTs and summary of its findings

MHRD appointed CDECS, Jaipur and Indian Institute of Education, Pune for monitoring of the scheme in the state.

2.17 Write up on best / innovative practices followed in the States

According to Evaluation report good habits incorporated in students, poor house holds have started sending their children to school regularly. As the children get good food regularly, students of all cast and creed have their meal together without any discrimination, so also there is no discrimination within boys and girls.

State Govt.has set up the committee under the chairmanship of J.M.Abyankar for recommending changes in implementation of M.D.M. Accordingly, the recommendation of this Committee, State Govt. published G.R. on 18th June 2009 regarding improvement in implementation of MDM. As per this G.R. in Rural area Rice and other material (eg.dal, oil, turmeric powder, Salt etc.) is supplied to the school directly. In Urban area there will be central kitchen system which will provide

ready cooked food directly to school. The Expression of Interest is being called for urban area. For implementing above system work is in process. State Govt. contributed Rs.450 per mt for transportation of Rice.

Best Practice

- Snehbhojan and Tithi Bhojan organized in the schools.
- Also in various district i.e. Satara, Pune, Osmanabad etc. schools have developed Parasbag by which these schools uses fresh vegetables and fruits for MDM.
- On 09 th Oct 2016, World Eggs Day was celebrated in all over Maharashtra, with the co-operation of Animal Husbandry Department Govt.of Maharashtra. On this day one boiled egg given to each student in the school.
- Use of solar energy for cooking of meals in Thane district.
- State has developed daily monitoring system i.e. MDM Portal .

Sneh bhojan -



उपक्रमाची कार्यवाही :-



- पावसाळी ऋतूचा उपयोग करून गटातील जिल्हा परिषदेच्या सर्व प्राथमिक शाळांमधून शाळा तेथे परसबाग हा उपक्रम हाती घेण्यात येत आहे.
- स्थानिक गावपातळीवर शालेय पोषण आहार अंतर्गत आवश्यक असलेले भाजीपाला शाळेतच मुख्याध्यापक, सर्व शिक्षक व विद्यार्थ्यांच्या मदतीने तयार करून घेणे.
- शाळा तेथे परसबागेसाठी आवश्यक मातीची जमीन तयार करून घेणे



- घने, टोमॅटो, वांगी, भेंडी, मेथी, पालक, शेवगा, भोपळा इत्यादी बी-बियाणे कृषि विभागाच्या सहकार्याने उपलब्ध करून घेणे.
- विद्यार्थ्यांच्या मदतीने प्रत्यक्ष बी-बियाणे रुजविणे, रोपांची लागवड करून घेणे.
- शिक्षक, पालक, विद्यार्थी यांचे सहाय्याने रोपांची निगा राखणे.
- महिन्याभरात उत्कृष्ट परिणाम दाखविणा-या शाळांची एक दिवस भाजी मंडई हा कार्यक्रम आयोजित करणे.
- विद्यार्थ्यांना भाजी विक्रीसाठी देणे, यातून गणितीय व व्यावहारिक आर्थिक ज्ञान विद्यार्थ्यांना मिळू शकेल.



2.18 Untoward incidents

Sr.No.	Name of School	Dt.	Of	Particular
1	Sahkarnagar Shatabdi sohia Municipal Marathi School Mumbai	15/01/16	incident	66 children took the meal but no student fell ill.
2	ZPPS Kasa Bu. Vikramgad Dist. Palghar	25/02/2016		123 children fell ill by vomiting.
3	Jivan vikas Vanita kanya school Umred Dist. Nagpur	02/03/2016		Out of 400 students 13 students having vomiting , headache, giddiness.
4	ZPPS Salgara Dist. Latur	14/10/2016		108 student took the meal but no one fell ill.

2.18.1 Instances of unhygienic food served, children falling ill

2.18.2 Sub standard supplies

2.18.3 Diversion / misuse of resources

2.18.4 Social discrimination

2.18.5 Action taken and safety measures adopted to avoid recurrence of such incidents

The Mid-day meal scheme is individual beneficiaries Scheme In the state, near about 105 lakh students are taking benefit of this scheme. Scheme is decentralized. There is a possibility of few incidents like unhygienic food served, children falling ill etc. But timely instructions have been given to all concern authority of implementing agencies to take precautionary measures to avoid such type of incidents. Instructions are given to District Education Officers, vide letters dated 07/09/2016, Food grains as per the standards of Food Safety and Standards Regulations, 2011 are supplied to schools. Even if there is any complain about quality or damage, supplier replaces the poor quality food grains.

2.19 Quality of food

2.19.1 System of Tasting of food by teachers/community. Maintenance of tasting register at school level.

Before serving food, Head master / SMC members /Teachers taste the food before half an hour. Tasting register is maintained at school level.

2.19.2 Testing of food sample by any reputed labs for the presence of nutrients and presence of microbes, if any, as per norms of Mid-Day Meals

2.19.3 Engagement of NABL labs for the testing of Meals

2.19.4 Details of protocol for testing of meals, frequency of lifting and testing of samples.

2.19.5 Details of samples taken for testing and the results thereof.

2.20 Involvement of NGOs/Trusts

2.20.1 Modalities for engagement of NGOs / Trusts for serving of MDM through centralized kitchen.

2.20.2 Whether NGOs / Trusts are serving meal in rural Areas

Yes, ISKCON Food Relief Foundation , Wada Dist. Thane serving meals in Vikramgad and Wada Block.

2.20.3 Maximum distance and time taken for delivery of food from centralized kitchen and school

Maximum distance from centralized kitchen and school is 50km and time taken to delivered the food is one and half hour.

2.20.4 Measures taken to ensure delivery of hot cooked meals to schools.

In Rural area meals was prepared in school premises so every student in rural get hot cooked meals.

2.20.4.1 Responsibility of receiving cooked meals at the schools from the centralized kitchen

School head receives cooked meals from centralized kitchen in appropriate time of lunch.

2.20.4.2 Whether the containers are sealed at the time of supply of meals to schools

Centralized kitchen have take precaution about each and every containers are sealed.



2.20.4.3 Tentative time of delivery of meals at school from centralized kitchen.

20 to 30 minutes in urban area and one and half hour in rural area have been taken for delivery for meals at school from centralized kitchen.

2.20.5 Testing of food samples at centralized kitchens

Mid day meal scheme is implemented by SMC at village level. Municipal Corporation & council at urban level by Ward Education committee & in Private Aided Schools by Management Committee of Schools are responsible for implementation. They appoint agencies like SHG, Mahila Mandal, needy women or NGOs. So there is full involvement of Panchayat Raj Institutions at various levels. In Maharashtra few Municipal Corporations has assigned the work of cooking to NGOs like ISKCON Relief Foundation, Naik Foundationetc

2.21 Status of Rastriya Bal Swasthya Karyakram - RBSK (School Health Programme)

2.21.1 Provision of micro- nutrients, Vitamin-A, de-worming medicine, Iron and Folic acid (WIFS), Zinc.

2.21.2 Distribution of spectacles to children with refractive error,

2.21.3 Recording of height, weight etc.

2.21.3.1 Number of visits made by the RBSK team for the health check- up of the children.

School health programme is implemented for Ist to VIIIth class students in Maharashtra. Under this Programme, medical check up of the students is carried out and treatment was given for minor illness and referral services were provided for major illness. Under Mid-day meal scheme there is no separate programme carried out for students.

2.22 Present monitoring structure at various levels. Strategy for establishment of monitoring cell at various levels viz. Block, District and State level for effective monitoring of the scheme.

At school level school management committee members, mother volunteers, and inspecting staff (Kendrapramukh, Extension officers, Superintendent (MDM), Block Education officers) of Education department are made responsible for supervision and monitoring of MDM. At district level, flying squads are established. At State level, vigilance squads are established.

2.23 Meetings of Steering cum Monitoring Committees at the Block, District and State level

2.23.1 Number of meetings held at various level and gist of the issues discussed in the meeting,

2.23.2 Action taken on the decisions taken during these meetings.

2.24 Frequency of meeting of District Level Committee held under the chairmanship of senior most MP of the District to monitor the scheme. Gist of the issues discussed and action taken thereon.

In Maharashtra state district level vigilance and monitoring committees are formed under senior Member of Parliament of that district and total 29 meetings held in all districts.

2.25 Arrangement for official inspections to MDM centers /schools and percentage of schools inspected and summary offindings and remedial measures taken.

Departmental Inspection of Mid Day Meal Scheme is done by the field officials which includes a) District Education Officer b) Block Education Officers/Superintendent c) Extension Officer d) Kendra pramukh e) SMC/Ward Committee.

No. of schools Inspected in the current year – 86600.

2.26 Feedback/comments in respect of report of Monitoring Institutions designated for your State/UTs to monitor implementation of MDM and action taken thereon.

Nandurbar and Dhule

A) Findings of Centre for Development Communication and studies (CDECS), Jaipur are as follows.

1. Information under RTE Act 2009 (Date of receipt of food grains, Balance quantity of food grains utilized, other ingredients purchased and utilized, number of students availed MDM, MDM daily menu.) was not displayed in any of the sample schools.
2. The district and blocks does not have any toll free numbers dedicated to MDM.

3. MDM scheme did not receive any support under MP LAD / MLA LAD scheme in these sample schools.
4. Irregularity in supply of food grains to schools.
5. Break in Mid Day meal scheme.
6. Daily menu was not displayed in school premises.
7. Delay of duration in receiving cooking cost was more than 30 days.
8. In 30 sample school MDM logo not displayed.

B) Findings of Indian Institute of Education, Pune are -

1. In all visited districts, funds were not released regularly.
2. All sample schools had not received cooking cost regularly or not in advance.
3. In all sample school remuneration was not paid to cook cum helper regularly.
4. Some schools not have Kitchen shed.
5. Some schools having kitchen shed but not in use condition.
6. Students are not satisfied about quantity of food and quality of food provided through MDM scheme in schools.

C) Action taken :

1. There is delay of more than 30 days for MDM payment – Instructions are given to all E.O. to avoid such type of delay in payment. Payments should be made directly district to SMC.
2. All E.O.'s are instructed to start a toll free helpline for MDM.
3. All EO's has been made such 20 days buffer stock at their level to avoid such type delay in supply of food grains.
4. All schools are instructed to display MDM logo and menu at the notice board .
5. For checking quality and quantity of MDM food, all EO's were instructed to creates flying scuds and submit their visit report to Director of Primary Education.

**2.27 Details of the Contingency Plan to avoid any untoward incident.
Printing of important phone numbers (eg. Primary health center,
Hospital, Fire brigade etc) on the walls of school building.**

To avoid any untoward incident districts have been instructed-

1. To keep fire extinguishers and sand buckets in schools.
2. SMC members should inspect whether health check up and cleanliness of cook cum helpers (appointed by cooking agency) is carried out regularly or not.
3. SMC members & teachers should first take the taste of the meal before half an hour & then the meal should be served to students.
4. Also continuous and random checking and supervision by the field officers should be done to prevent any untoward happening.
5. Instructions about keeping phone numbers of PHC near by, local clinic, Hospitals, Ambulance & Fire brigade services etc and displaying them on the prominent places
6. First-Aid boxes should be kept in schools.

2.28 Grievance Redressal Mechanism

At state level toll free number and email made available for all for any type of grievance.

2.28.1 Details regarding Grievance Redressal at all levels,

At state, district and block level – A grievance complaint register was maintained about grievances and their redressal as well as communication with concern authorities, schools at various level.

2.28.2 Details of complaints received i.e. Nature of complaints etc.

2.28.3 Time schedule for disposal of complaints,

2.28.4 Details of action taken on the complaints.

Toll free helpline for lodging complaints has been activated.

No. of complaints received under MDMS - 157

Nature of complaint are shortage of rice, spices & condiments due to late supply, complaints regarding quality of food grains, delay in receiving cooking cost and honorarium to CCH.

As soon as the cell receives the complaint the officials contacts the Education officers of the particular district and ask them to take necessary action immediately.

2.29 Details regarding Awareness Generation & IEC activities and Media campaign, carried out at State/district/block/school level.

Banners have been provided to schools which display information about Midday Meal scheme and instructions about displaying the necessary information in prominent places are given to district officials.



2.30 Overall assessment of the manner in which implementation of the programme is contributing to the programme objectives and an analysis of strengths and weaknesses of the programme implementation.

The scheme is popular all over the state and particularly in rural and tribal areas. The students are developing better eating habits. The parents are also satisfied with quantity & quality of food. Since the scheme has been totally decentralized, the community participation has increased. Mothers' involvement in supervision of cooked meal is helping children to participate in this programme. This scheme has helped retain children in the school for the entire day. Mid day meal scheme is implemented with full

decentralization at village & school level. SMC is fully authorized to implement the mid day meal scheme at school level. Funds are provided to SMC and are authorized to extend.

2.31 Contribution by community in the form of TithiBhojan or any other similar practices in the State/ UTetc.

As per GR dated 13th Aug 2015, Sneh Bhojan is done in various districts of Maharashtra . In snehbhojan foods like fruits, cooked food provides to students. Programme Of Sneh Bhojan is done all over Maharashtra , specially above mentioned in Kolhapur district Panhala Block.

Govt. of Maharashtra by the resolution dated 13th August, 2015 conveyed all schools to distribute sweet items, non-veg like chickenbiryani, fruits to students on the occasion of birth-days, anniversaries, festivals etc of eminent people of the area like Sarpanch, SMC presidents, Local Political leaders. The Head master should convince them to do so.



2.32 Details of action taken to operationalize the MDM Rules, 2015

All education officer has been aware with MDM Rules, 2015 and with the regards to this, they were asked to make awareness regarding the MDM Rules , 2015.

2.33 Details of payment of Food Security Allowances and its mechanism.

There is no interruption in serving meals to students hence there is no question to paid Food Security Allowances to beneficiaries.

2.34 Any other issues and Suggestions.

- 1) Existing norm of Rs. 5000 per school for kitchen devices is very less to meet requirement. Hence, it should be increased to Rs. 10000 per school or should be provided as per the number of student in school.
- 2) Honorarium of cook-cum-helper should be increased.
- 3) This scheme is formulated in 1995. At present financial status of the some of the parents is increased. So Mid Day Meal Scheme should be made optional. it must not be compulsory for those students who can afford and like Tiffin from home.
- 4) Cooking cost should be increased
- 5) As per guidelines quantity of rice for primary is 100 gm per students and for upper primary is 150gm per student .This may be reduced.
- 6) Percentage for approving grant for MME should be increased at 2.5%
- 7) Transport allowance should be increased.
- 8) Grant for kitchen device replacement should be increased.

Mid Day Meal Scheme – Maharashtra

Annual Work Plan and Budget

MME Plan 2016-17

The state of Maharashtra has no separate directorate for Mid Day Meal Scheme. The MDM Guidelines for MME has allowed to appoint staff on contract basis. Some other states in the country has established separate MDM cell or directorate. Therefore taking into consideration the importance of scheme and its monitoring, separate MDM cell is necessary. Therefore under MME funds state level MDM cell is proposed as under-

State Level MDM Cell& District Coordinators

1.	State Nodal officer - MDM (1 post)	9 Lakh
2.	Dy. Director - MDM (1 post) (General)	6 Lakh
3.	Dy. Director - MDM (1 post) (Monitoring& MIS)	6 Lakh
4.	Assistant Director (Planning)	5.40 Lakh
5.	Assistant Director (Monitoring& MIS)	5.40 Lakh
6.	Assistant Director (Nutrition & Training)	5.40 Lakh
7.	Superintendent (6 post)	24 Lakh
8.	Accounts officer (1 post)	5 Lakh
9.	Asst. Account officer (1 post)	4 Lakh

10.	Accountant (2)	6 Lakh
11.	Support Staff (10) @ State Rate Contract	11.52Lakh
12.	Other office expenditure including building on rent, hiring of vehicles etc.,	50.00 Lakh
13.	District Coordinators in each district to be engaged (MBA Qualified persons on contract basis) (34 dist x 12 months x Rs. 20000 pm)	81.60 Lakh
	Total Expenditure (State + District + Block)	219.32 Lakh

The MDM cell is proposed as having above different posts of which Sr.No. 1 to 10 are proposed to be filled by way of deputation/Transfer and Sr.No. 11& 13 posts are proposed to be filled on contract basis.

MME Item wise Expenditure Plan (2016-17)

Sr.No.	Name of Item	Proposed Expenditure
School Level		
1.	Training of SMC Members & Mother / Parents	100.00 Lakh
2.	Different Stock Registers at school level	380.00 Lakh
3	IEC (Advt., Publicity etc.)	100.00 Lakh
4.	Soap, Phenyl, Kitchen devices etc.	373.76 Lakh
A	Sub Total	953.76 Lakh
State Level		
1	State Level MDM cell + District coordinator (MBA) + Data Entry Operator at block, district & state level	660.00 Lakh
2	Contingency Changes @ 50,000 at block level @ 1,00,000 at dist. Level	224.00 Lakh
5	Other Expenses & Contingencies	69.74 Lakh
B	Sub Total	953.74 Lakh
A + B	Total	1907.50 Lakh

Director

Directorate of Primary Education
Government of Maharashtra
Pune.

Secretary

School Edu. & Sports Dept.
Govt. of Maharashtra

MME Item wise Expenditure Plan (2017-18)

Sr.No.	Name of Item	Proposed Expenditure
School Level		
1.	Training of SMC Members & Mother / Parents	100.00 Lakh
2.	Expenditure for Automated monitoring system (per school 400)	346.82 Lakh
3	IEC (Advt., Publicity etc.)	100.00 Lakh
4.	Soap, Phenyl, Kitchen devices etc.	286.76 Lakh
A	Sub Total	835.58 Lakh
State Level		
1	State Level MDM cell	124.02 Lakh
2	Contingency Changes @ 25,000 at block level @ 50,000 at dist. Level	106.75 Lakh
5	Data Entry Operator honorarium at block, district & state level	604.80 Lakh
B	Sub Total	835.57 Lakh
A + B	Total	1671.15 Lakh

Director

Directorate of Primary Education
Government of Maharashtra

Secretary

School Edu. & Sports Dept.
Govt. of Maharashtra

Pune.